



Solid State Devices, Inc.

14701 Firestone Blvd * La Mirada, CA 90638
Phone: (562) 404-4474 * Fax: (562) 404-1773
ssdi@ssdi-power.com * www.ssdi-power.com

SDA172HF series

Designer's Data Sheet

Part Number/Ordering Information ^{1/}

SDA172

HF

Screening ^{2/}

— = Not Screened

TX = TX Level

TXV = TXV Level

S = S Level

Reverse Recovery

HF = Hyper Fast

Family/Voltage

J = 600 V

K = 700 V

L = 800 V

M = 900 V

30 nsec

1.3 Amp

Single Phase Bridge
Rectifier Assembly

FEATURES:

- Reverse Recovery Time: 30 ns Max
- Average Output Current: 1.3 Amps
- PIV: 600 to 900 Volts
- Hermetically Sealed Internal Discretes
- Thermal Conductive Epoxy Encapsulated
- Surface or Radial Mounting*
- Available in Higher Voltages
- Available in Ultra Fast, Fast, and Standard Recovery

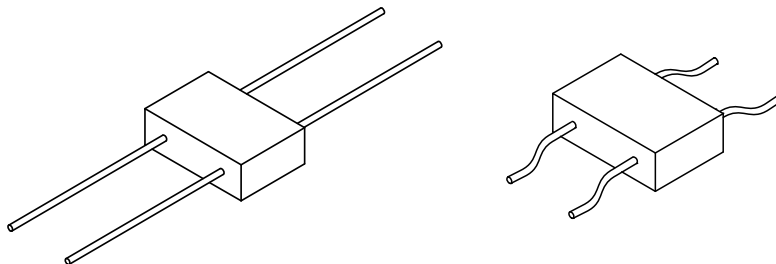
*For surface mounting add -2 to part number.

Electrical Characteristics		Peak Inverse Voltage (per leg)	Average DC Output Current T _C =Case Temp		Reverse Recovery Time	Peak Forward Surge Current (1 Cycle)	Maximum Forward Voltage (per leg) @ 1.0 ADC	Maximum Reverse Current (per leg) @ PIV	
			50°C	100°C	Max			25°C	100°C
Part Number		Volts	Amps	Amps	ns	Amps	Volts	µA	µA
SDA172J SDA172J-2	HF	600	1.3	1.0	30	25	1.9	10	200
SDA172K SDA172K-2	HF	700	1.3	1.0	30	25	1.9	10	200
SDA172L SDA172L-2	HF	800	1.3	1.0	30	25	1.9	10	200
SDA172M SDA172M-2	HF	900	1.3	1.0	30	25	1.9	10	200

NOTES:

^{1/} For ordering information, price, and availability - contact factory.

^{2/} Screening based on MIL-PRF-19500. Screening flows available on request.



NOTE: All specifications are subject to change without notification. SCD's for these devices should be reviewed by SSDI prior to release.

DATA SHEET #: RA0103A

DOC



Solid State Devices, Inc.

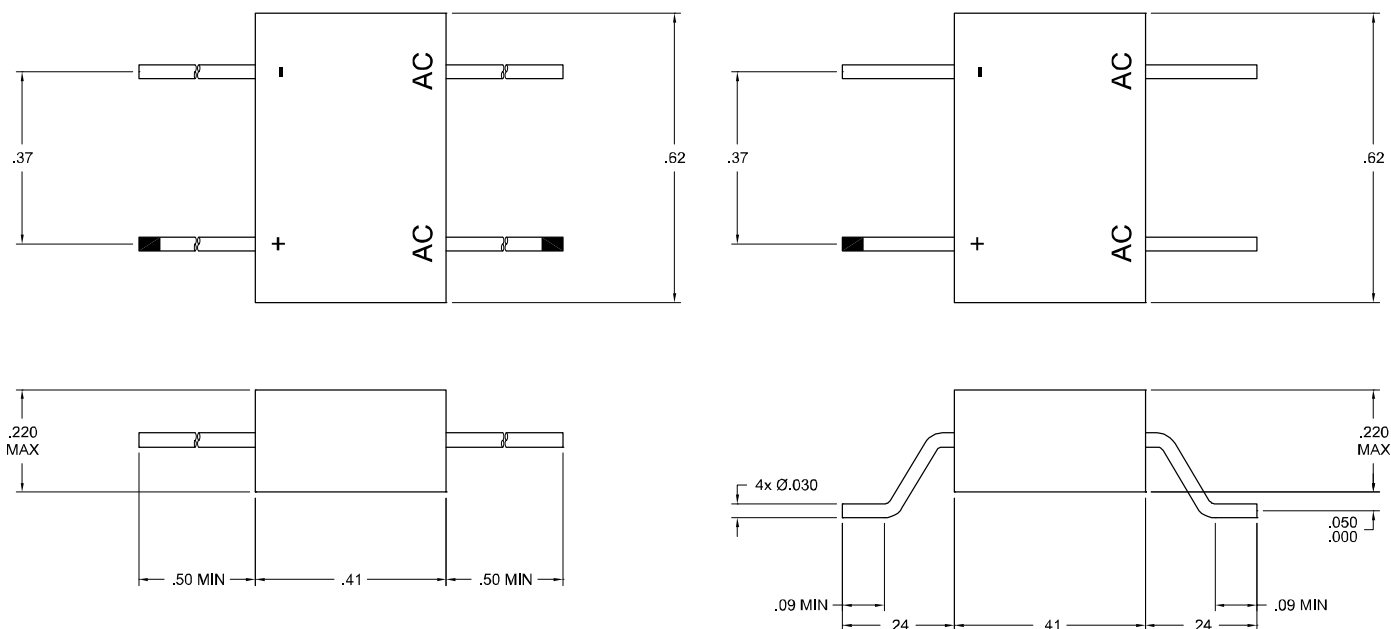
14701 Firestone Blvd * La Mirada, CA 90638

Phone: (562) 404-4474 * Fax: (562) 404-1773

ssdi@ssdi-power.com * www.ssdi-power.com

SDA172HF series

SDA172J through SDA172M:



*For information on curves, contact the Factory Representative for Engineering Assistance.

Design Notes:

Operating Temperature T_{OP} -55 °C to +150 °C

Reverse Recovery Time $I_F = 500mA$, $I_R = 1.0$ Amp, $I_{rr} = 250mA$

NOTE: All specifications are subject to change without notification.
SCD's for these devices should be reviewed by SSDI prior to release.

DATA SHEET #: RA0103A

DOC