



# Solid State Devices, Inc.

14701 Firestone Blvd \* La Mirada, Ca 90638  
 Phone: (562) 404-4474 \* Fax: (562) 404-1773  
 ssdi@ssdi-power.com \* www.ssdi-power.com

## SDA267AUF thru SDA267GUF

**10 AMPS**  
**50 – 1000 VOLTS**  
**ULTRA FAST RECOVERY**  
**SINGLE PHASE BRIDGE RECTIFIER**

### Designer's Data Sheet

#### Part Number/Ordering Information <sup>1/</sup>

**SDA267**

**UF**

**L**

#### Screening <sup>2/</sup>

— = Not Screened

TX = TX Level

TXV = TXV Level

#### Peak Inverse Voltage

A = 50V, B = 100V, C = 200V, D = 400V

E = 600V, F = 800V, and G = 1,000V

#### FEATURES:

- Average Output Current 10 Amps
- PIV 50 to 1000 Volts
- Reverse Recovery Time 60-80 ns Max
- Max Thermal Resistance 5.0°C/Watt
- Hermetically Sealed Diode Cells
- Turret Terminal
- Aluminum Case
- Available in Standard, Ultra Fast, and Hyper Fast versions - Consult Factory
- TX and TXV Screening Available

### ELECTRICAL CHARACTERISTICS <sup>3/</sup>

Part Number	Peak Inverse Voltage (per leg)	Reverse Recovery Time <sup>4/</sup> (per Leg)	Average DC Output Current		Average DC Output Current			Peak Forward Surge Current (1 Cycle)	Peak Repetitive Forward Current	Maximum Forward Voltage (per leg)	Maximum Reverse Current (per leg) @ PIV	
			$T_C = \text{Case Temp}$	$T_A = \text{Ambient Temp}$	(no heat sink)		@ PIV					
Symbol	PIV	t <sub>RR</sub>	I <sub>F(AV)</sub>		I <sub>F(AV)</sub>			I <sub>FSM</sub>	I <sub>FRM</sub>	V <sub>F @ 3A</sub>	I <sub>R</sub>	
Units	Volts	nsec	Amps		Amps			Amps	Amps	Volts	µA	
Conditions	25°C	25°C	55°C	100°C	25°C	55°C	100°C	25°C	25°C	25°C	25°C	100°C
SDA267AUF	50	60	10	6	4	3	1.7	75	60	1.4	20	1000
SDA267BUF	100	60	10	6	4	3	1.7	75	60	1.4	20	1000
SDA267CUF	200	60	10	6	4	3	1.7	75	60	1.4	20	1000
SDA267DUF	400	60	10	6	4	3	1.7	75	60	1.4	20	1000
SDA267EUF	600	60	10	6	4	3	1.7	75	60	1.4	20	1000
SDA267FUF	800	70	8	5	3.3	2.5	1.4	75	60	1.7	20	1000
SDA267GUF	1000	80	7.4	4.4	3	2.2	1.2	75	60	1.9	20	1000

#### NOTES:

\* Pulse Test: Pulse Width = 300µsec, Duty Cycle = 2%

#### NOTES:

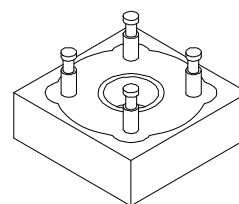
<sup>1/</sup> For Ordering Information, Price, Operating Curves and Availability- Contact Factory.

<sup>2/</sup> Screening based on MIL-PRF-19500. Screening flows available on request.

<sup>3/</sup> Unless Otherwise Specified, All Electrical Characteristics @25°C.

<sup>4/</sup> t<sub>RR</sub> measured at I<sub>F</sub> = 0.5A, I<sub>R</sub> = 1A, I<sub>RR</sub> = 0.25A, T<sub>A</sub> = 25°C

#### SDA267



NOTE: All specifications are subject to change without notification. SCD's for these devices should be reviewed by SSDI prior to release.

DATA SHEET #: RA0097A

DOC

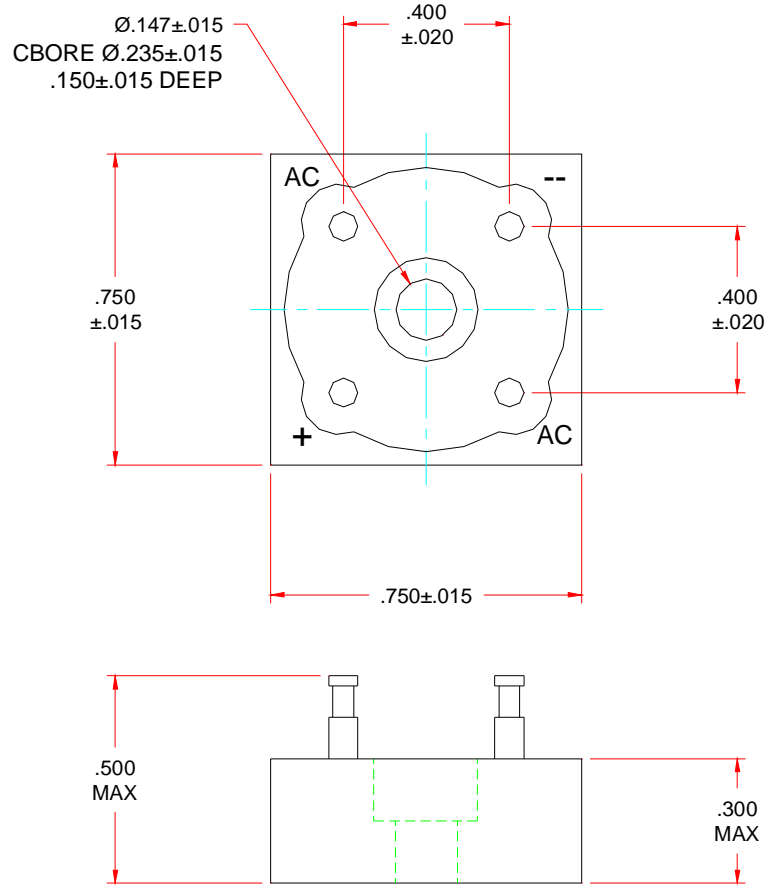


**Solid State Devices, Inc.**

14701 Firestone Blvd \* La Mirada, Ca 90638  
Phone: (562) 404-4474 \* Fax: (562) 404-1773  
ssdi@ssdi-power.com \* www.ssdi-power.com

**SDA267AUF thru SDA267GUF**

**PACKAGE OUTLINE: SDA267**



**NOTE:** All specifications are subject to change without notification. SCD's for these devices should be reviewed by SSDI prior to release.

**DATA SHEET #: RA0097A**

**DOC**