

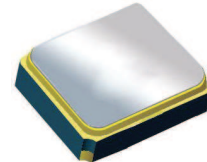
Surface Mount 1588.66 MHz SAW Filter

AFS14A34-1588.66-T3

Moisture Sensitivity Level (MSL) – This product is Hermetically Sealed and not Moisture Sensitive - MSL = N/A: Not Applicable



RoHS
Compliant



1.4 x 1.1 x 0.7 mm

FEATURES:

- 1.4 x 1.1 x 0.7 mm low profile SMT package
- Low Insertion loss
- Excellent selectivity with high out-of-band rejection

APPLICATIONS:

- Wireless Communication
- Remote Control
- Cellular Phones

ELECTRICAL SPECIFICATIONS:

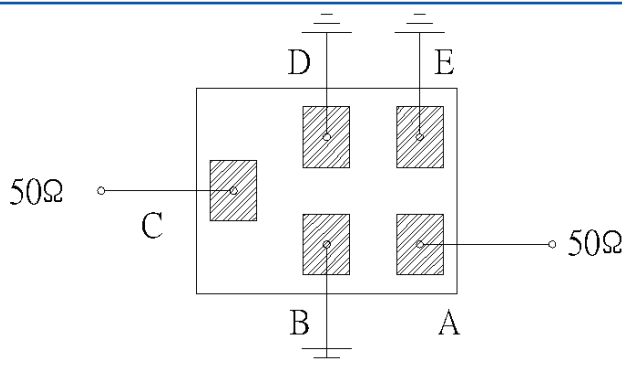
Maximum Ratings

Item	Value
Input Power Level	+10 dBm max.
DC Permissive Voltage	3.0V DC max.
Operating Temperature Range	-30°C to + 85°C
Storage Temperature Range	-40°C to + 85°C

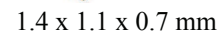
Parameters	Minimum	Typical	Maximum	Units	Notes
Center Frequency (f_c)		1588.66		MHz	
Insertion Loss (IL)		1.25	1.70	dB	1573.42~1577.42 MHz
Insertion Loss (IL)		1.7	2.5	dB	1571.42~1605.89 MHz
Effective Bandwidth		34		MHz	
Amplitude Ripple		0.25	0.8	dB	1573.42~1577.42 MHz
Amplitude Ripple		0.7	1.5	dB	1571.42~1605.89 MHz
Worst-Case Input / Output Return Loss	9.54	20.8		dB	1573.42~1577.42 MHz
Worst-Case Input / Output Return Loss	12.7	20.8		dB	1571.42~1605.89 MHz
Stop-band Attenuation (Referenced to 0.0 dB)	32	35		dB	D.C~824 MHz
	32	35			824~849 MHz
	32	34.5			849~880 MHz
	32	34.5			880~915 MHz
	30	34			915~1452 MHz
	32	37			1452~1525 MHz
	32	36			1710~1785 MHz
	32	36			1785~1850 MHz
	25	36			1850~6000 MHz
Temperature Coefficient of frequency		-36		ppm/°C	
Source Impedance (Z_S)		50		Ω	See note # 1
Load Impedance (Z_L)		50		Ω	See note # 1

Note #1: No matching network required for operation into 50 Ω 's

TEST CIRCUIT:

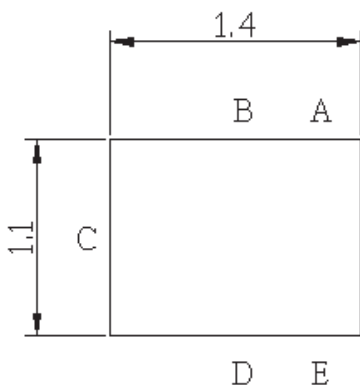


AFS14A34-1588.66-T3

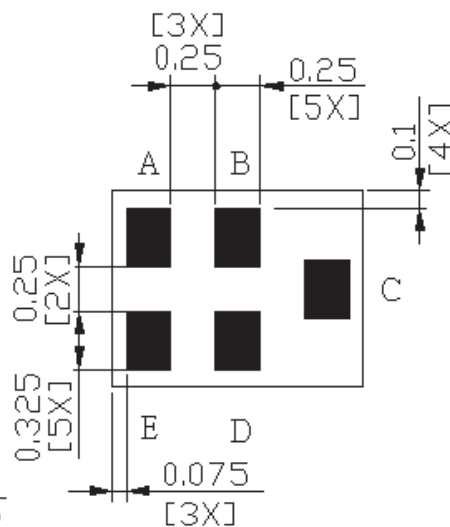
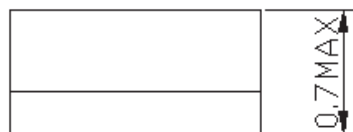


RoHS
Compliant

top view



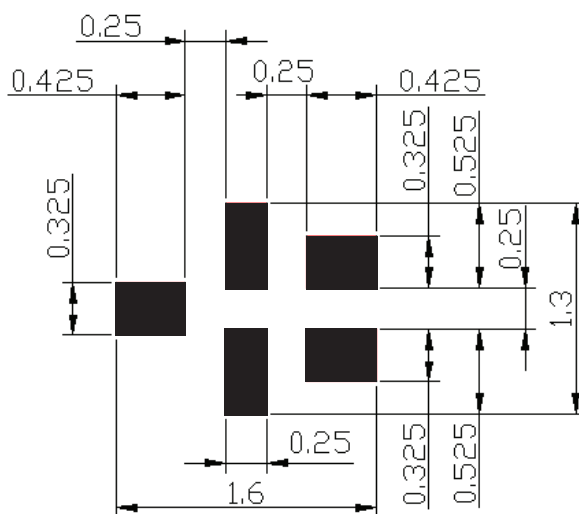
side view



bottom view

C:	Input
A:	Output
B, D, E:	Ground

Recommended Land Pattern:



Unit : mm

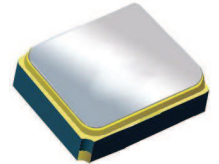
*All Dimensions are in mm

Surface Mount 1588.66 MHz SAW Filter

AFS14A34-1588.66-T3



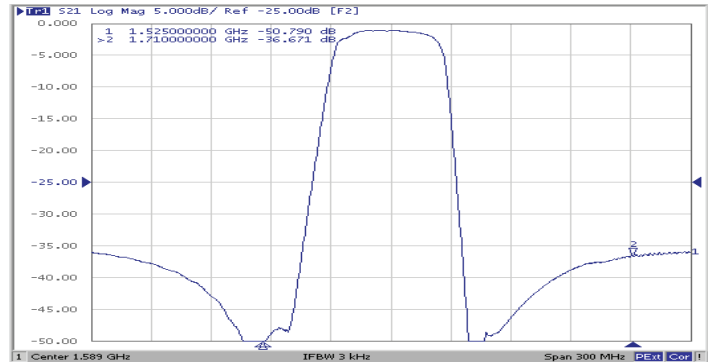
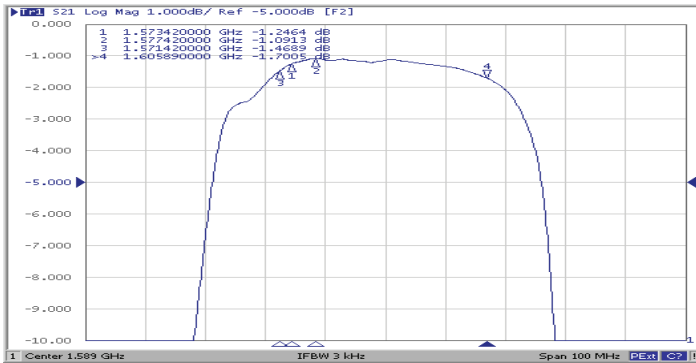
RoHS
Compliant



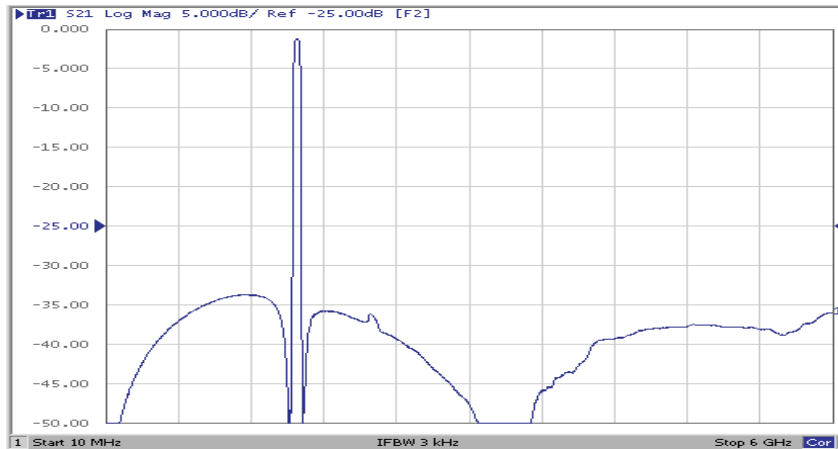
1.4 x 1.1 x 0.7 mm

FREQUENCY CHARACTERISTICS:

Filter Frequency Response (Narrowband)

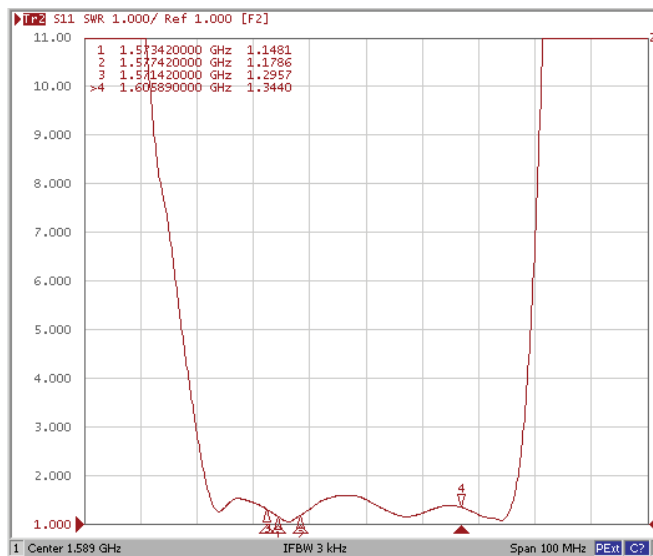


Filter Frequency Response (Wideband)

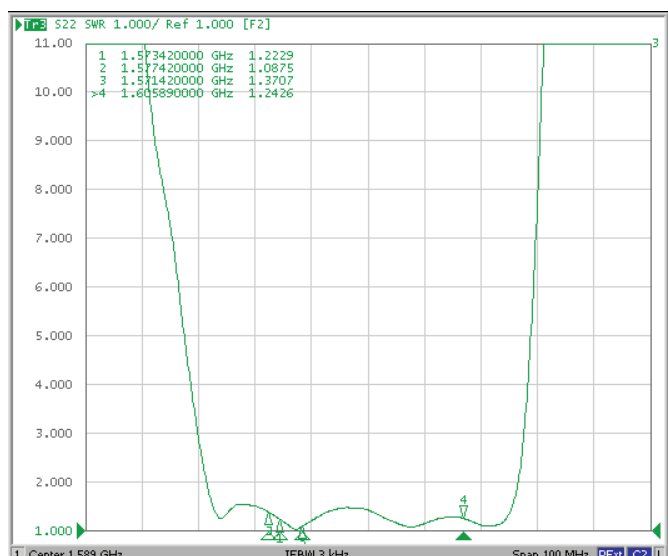


REFLECTION FUNCTIONS:

S11



S22



ABRACON IS
ISO 9001:2008
CERTIFIED



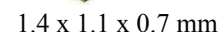
ABRACON
CORPORATION

Visit www.abracon.com for Terms & Conditions of Sale

30332 Esperanza, Rancho Santa Margarita, California 92688
tel 949-546-8000 | fax 949-546-8001 | www.abracon.com

Revised: 04.16.13

AFS14A34-1588.66-T3

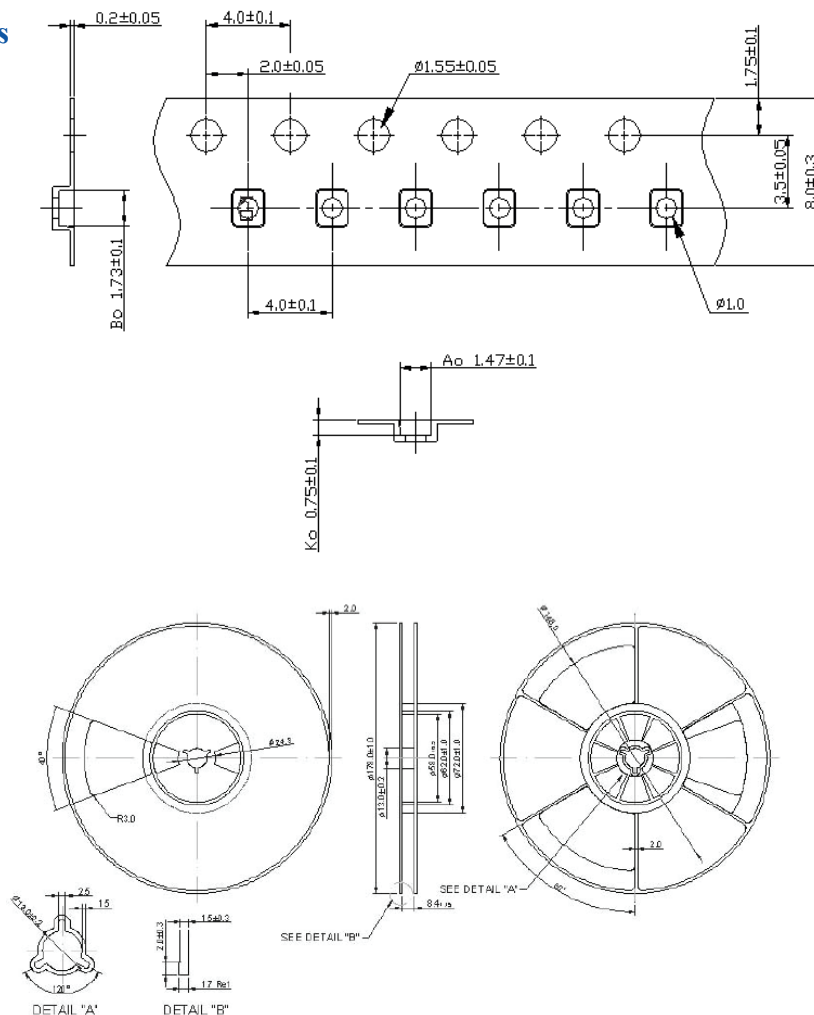


RoHS
Compliant

The graph shows the temperature profile over time. The temperature starts at 25°C at 0 seconds, remains constant until 20 seconds, then rises sharply to 145°C at 40 seconds. It continues to rise with some fluctuations, reaching a peak of 260°C at 220 seconds. After the peak, the temperature decreases to 145°C at 280 seconds and then continues to decrease to 110°C at 360 seconds.

Time (Sec)	Temp (Deg C)
0	25
20	25
40	145
60	150
80	155
100	155
120	165
140	175
160	185
180	215
200	250
220	260
240	245
260	175
280	145
300	145
320	130
340	115
360	110

Reel Count : 7" = 3k units



Dimensions: mm

ABRACON IS
ISO 9001:2008
CERTIFIED



ABRACON CORPORATION

30332 Esperanza, Rancho Santa Margarita, California 92688
tel 949-546-8000 | fax 949-546-8001 | www.abracon.com

Revised: 04.16.13