

# LOW FREQUENCY REFLOWABLE CYLINDRICAL WATCH CRYSTAL



6.0 x  $\phi$ 1.9mm

**AB26TRB**

Pb in high melting temperature type solders  
(exempt per RoHS 2002/95/EC Annex (7a))

**RoHS**  
Compliant

## FEATURES:

- Formed leads for low cost SMD type
- Excellent shock resistance
- Reflow Capable
- Low cost for consumer applications
- IR reflow capable

## APPLICATIONS:

- Real time clock
- Measuring instruments
- Blue-tooth and wireless applications

## STANDARD SPECIFICATIONS:

Parameters	Minimum	Typical	Maximum	Units	Notes
Center Frequency		32.768		kHz	
Operating Temperature	-40		+85	°C	
Turnover Temperature	+20	+25	+30	°C	
Storage Temperature	-55		+125	°C	
Frequency Tolerance @+25°C	-20		+20	ppm	
Frequency Coefficient ( $\beta$ )	-0.040	-0.034	-0.028	ppm/T <sup>2</sup>	
Equivalent series resistance (R1)		35	50	k $\Omega$	@25°C
Shunt capacitance (C0)		1.35		pF	
Load capacitance (CL)		12.5		pF	
Drive Level			1	$\mu$ W	
Quality Factor		70,000			
Aging	-3		+3	ppm	@25°C $\pm$ 3°C First year
Insulation Resistance	500			M $\Omega$	@ 100Vdc $\pm$ 15V

## OPTIONS & PART IDENTIFICATION: (Left blank if standard)

AB26TRB-32.768kHz -  -  -

Load Capacitance (pF)
Blank: 12.5pF
6: 6pF
10: 10pF

Freq. Tolerance
1: $\pm$ 10 ppm
7: $\pm$ 15 ppm
2: $\pm$ 20 ppm
3: $\pm$ 25 ppm
4: $\pm$ 30 ppm

Packaging
Blank: Bulk
T: Tape & Reel

# LOW FREQUENCY REFLOWABLE CYLINDRICAL WATCH CRYSTAL



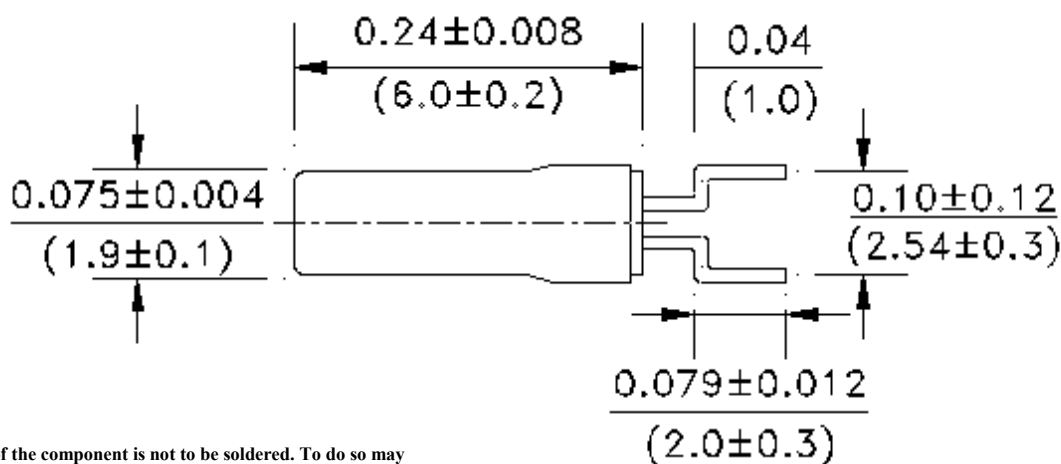
6.0 x  $\phi$ 1.9mm

AB26TRB

Pb in high melting temperature type solders  
(exempt per RoHS 2002/95/EC Annex (7a))

RoHS  
Compliant

## OUTLINE DIMENSIONS:

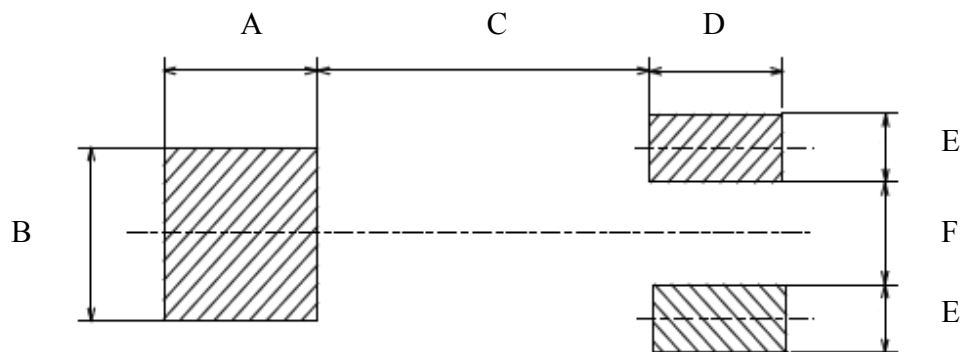


### NOTE:

The body/can of the component is not to be soldered. To do so may cause damage to the crystal.

Use Adhesive/Bonding Materials (i.e. Rubber Adhesive, Epoxy, etc) to affix the component body to the PCB.

## Recommended Land Pattern



A	B	C	D	E	F
0.099 (2.5)	0.099 (2.5)	0.21 (5.25)	0.099 (2.5)	0.04 (1)	0.06 (1.5)

Dimensions: inches (mm)

# LOW FREQUENCY REFLOWABLE CYLINDRICAL WATCH CRYSTAL



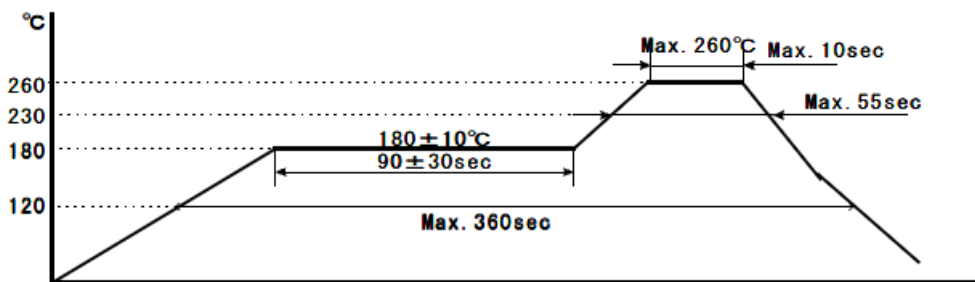
6.0 x  $\phi$ 1.9mm

AB26TRB

Pb in high melting temperature type solders  
(exempt per RoHS 2002/95/EC Annex (7a))

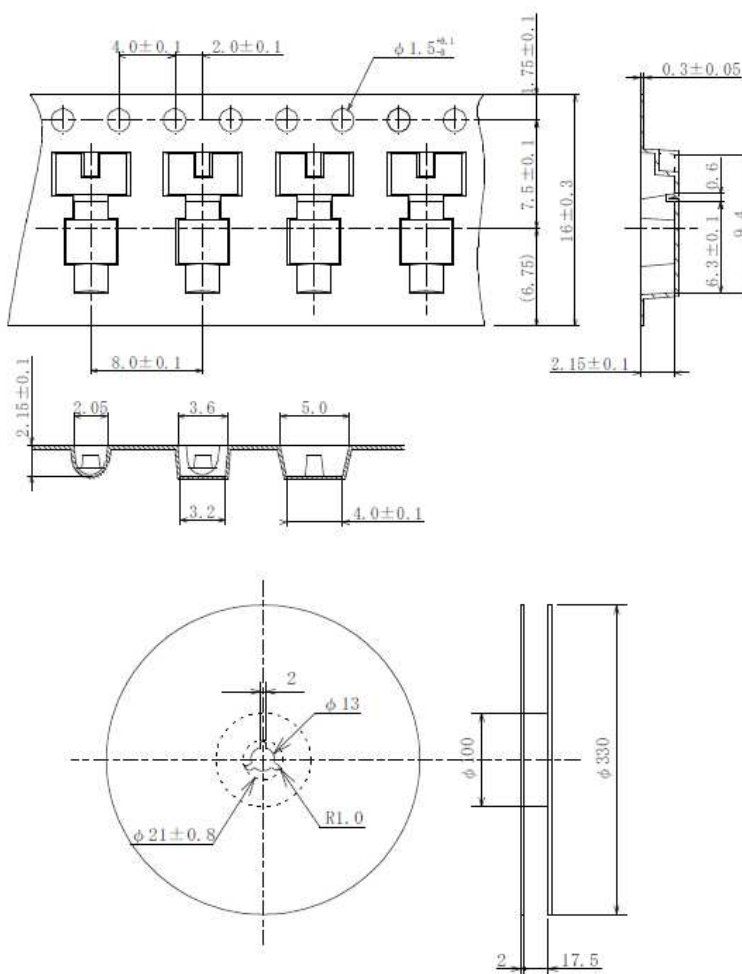
RoHS  
Compliant

## REFLOW PROFILE:



## TAPE & REEL:

Packaging: 2000pcs/reel



Dimensions: mm

**ATTENTION:** Abracon Corporation's products are COTS – Commercial-Off-The-Shelf products; suitable for Commercial, Industrial and, where designated, Automotive Applications. Abracon's products are not specifically designed for Military, Aviation, Aerospace, Life-dependant Medical applications or any application requiring high reliability where component failure could result in loss of life and/or property. For applications requiring high reliability and/or presenting an extreme operating environment, written consent and authorization from Abracon Corporation is required. Please contact Abracon Corporation for more information.

ABRACON IS  
ISO9001:2008  
CERTIFIED



**ABRACON  
CORPORATION**

Visit [www.abracon.com](http://www.abracon.com) for Terms & Conditions of Sale **Revised: 04.24.13**  
30332 Esperanza, Rancho Santa Margarita, California 92688  
tel 949-546-8000 | fax 949-546-8001 | [www.abracon.com](http://www.abracon.com)