



Description	3
Features	3
Pin Configuration	4
Block Diagram.....	5
Pin Description.....	6
Special Function Register (SFR)	7
Function Description	9
1. General Features	9
1.1. Embedded Flash	9
1.2. IO Pads	9
1.3. Instruction timing Selection	9
1.4. RESET	10
1.4.1. Hardware RESET function	10
1.4.2. Software RESET function	10
1.4.3. Time Access Key register (TAKEY).....	10
1.4.4. Software Reset register (SWRES).....	11
1.4.5. Example of software reset	11
1.5. Clocks	11
2. Instruction Set	12
3. Memory Structure	16
3.1. Program Memory	16
3.2. Data Memory.....	17
3.2.1. Data memory - lower 128 byte (00h to 7Fh).....	18
3.2.2. Data memory - higher 128 byte (80h to FFh)	18
4. CPU Engine	19
4.1. Accumulator	19
4.2. B Register	19
4.3. Program Status Word.....	20
4.4. Stack Pointer	20
4.5. Data Pointer	20
4.6. Data Pointer 1	21
4.7. Interface control register	21
5. GPIO	22
6. Timer 0 and Timer 1	24
6.1. Timer/counter mode control register (TMOD).....	24
6.2. Timer/counter control register (TCON)	25
6.3. T0、T1 signal swapping :	25
7. Serial interface 0	26
7.1. Mode 0	27
7.2. Mode 1	27
7.3. Mode 2	28
7.4. Mode 3	28
7.5. Multiprocessor communication of Serial Interface 0	28
7.6. Baud rate generator	29
7.6.1. Serial interface 0 modes 1 and 3	29
7.6.2. Clock source for baud rate	29
8. Watchdog timer	30
9. Interrupt.....	33
9.1. Priority level structure.....	35
10. Power Management Unit.....	36
10.1. Idle mode	36
10.2. Stop mode.....	36
11. IIC function	37
12. LVI – Low Voltage Interrupt	41
13. In-System Programming (Internal ISP)	42
13.1. ISP service program	42
13.2. Lock Bit (N).....	42

Specifications subject to change without notice contact your sales representatives for the most recent information.



13.3.	Program the ISP Service Program	43
13.4.	Initiate ISP Service Program.....	43
13.5.	ISP register – TAKEY, IFCON, ISPF AH, ISPFAL, ISPF D and ISPF C	43
Operating Conditions		46
DC Characteristics		46

Product List

SM39R4051W20, SM39R2051W20

Description

The original 8052 had 12-clock architecture. A machine cycle needed 12 clocks and most instructions were either one or two machine cycles. Thus except for the MUL and DIV instructions, the 8052 used either 12 or 24 clocks for each instruction. Furthermore, each cycle in the 8052 used two memory fetches. In many cases the second fetch was dummy, and extra clocks were wasted.

The SM39R4051 is a core of a fast single-chip 8-bit microcontroller. It is a fully functional 8-bit embedded controller that executes all ASM51 instructions and has the same instruction set as the MCS-51.

Ordering Information

SM39R4051ihhkL yymm v

i: process identifier {W = 2.7V ~ 5.5V}

hh: pin count

k: package type postfix {as table below }

L:PB Free identifier

{No text is Non-PB free , "P" is PB free}

yy: year

mm: month

v: version identifier{ A, B,...}

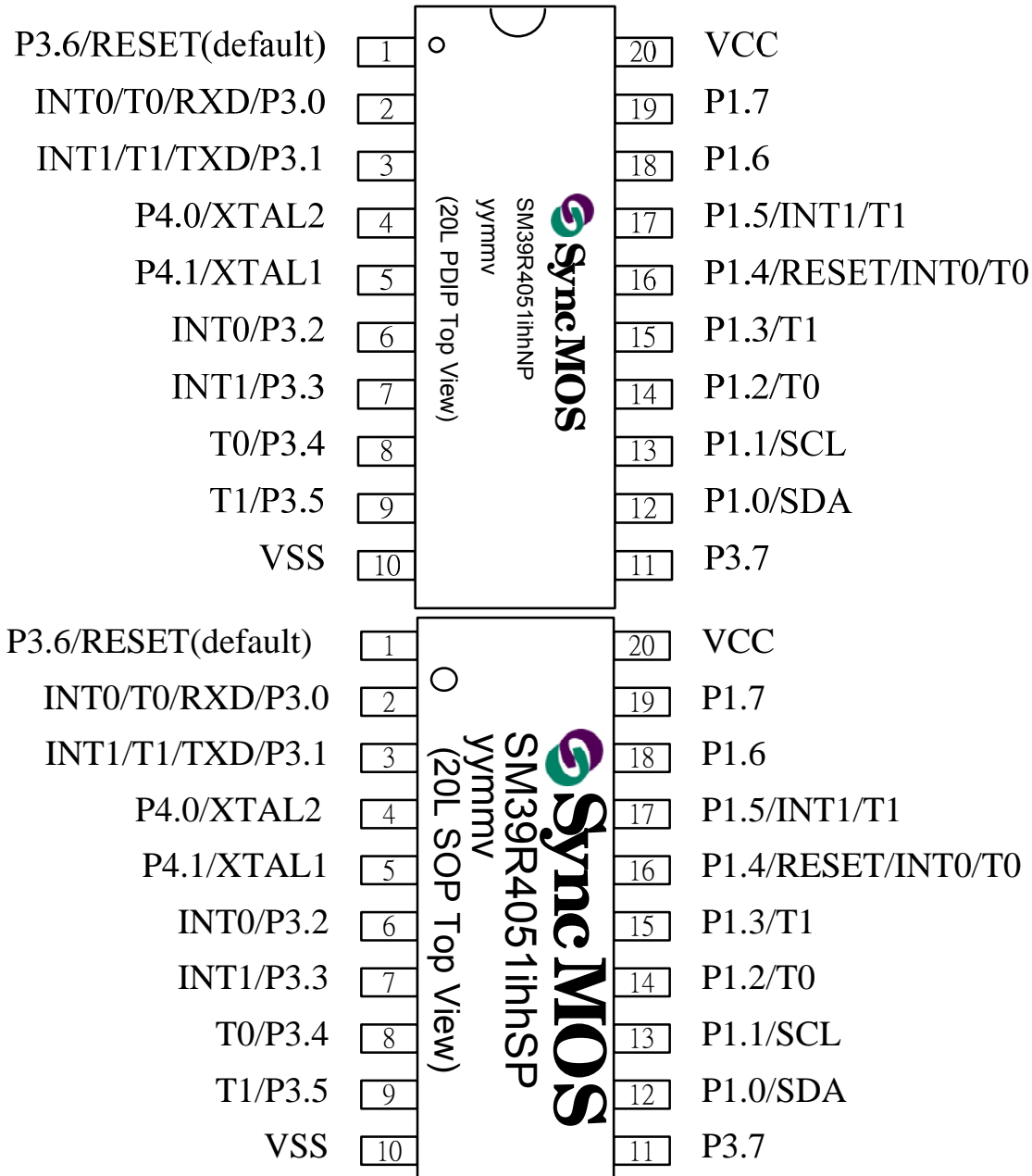
Postfix	Package	Pin / Pad Configuration
N	PDIP (300 mil)	Page 4
S	SOP (300 mil)	Page 4

Contact SyncMOS : www.syncmos.com.tw
6F, No.10-2 Li- Hsin 1st Road , SBIP, Hsinchu, Taiwan
TEL: 886-3-567-1820 FAX: 886-3-567-1891

Features

- Operating Voltage: 2.7V ~ 5.5V
- High speed architecture of 1 clock/machine cycle runs up to 25MHz.
- 1~8T modes are software programmable.
- Instruction-set compatible with MCS-51.
- Internal OSC with range 1MHz~24MHz
- 4K/2K Bytes on-chip flash program memory.
- 256 bytes RAM as standard 8052,
- One serial peripheral interfaces in full duplex mode.
 - Synchronous mode, fixed baud rate,
 - 8-bit UART mode, variable baud rate.
 - 9-bit UART mode, fixed baud rate,
 - 9-bit UART mode, variable baud rate.
- Additional Baud Rate Generator
- Two 16-bit Timer/Counters. (Timer 0, 1)
- 18 GPIOs(20L PDIP&SOP)
- Programmable watchdog timer.
- One IIC interface. (Master/Slave mode)
- On-chip flash memories support ISP/IAP/ICP and EEPROM functions.
- ISP service program space configurable in N*256 byte (N=0 to 4) size.
- On-Chip in-circuit emulator (ICE) functions with On-Chip Debugger (OCD).
- EMI reduction mode (ALE output inhibited).
- LVI/LVR.
- IO PAD ESD over 4KV.
- Enhance user code protection.
- External interrupt 0, 1 with four priority levels.
- Power management unit for IDLE and power down modes.

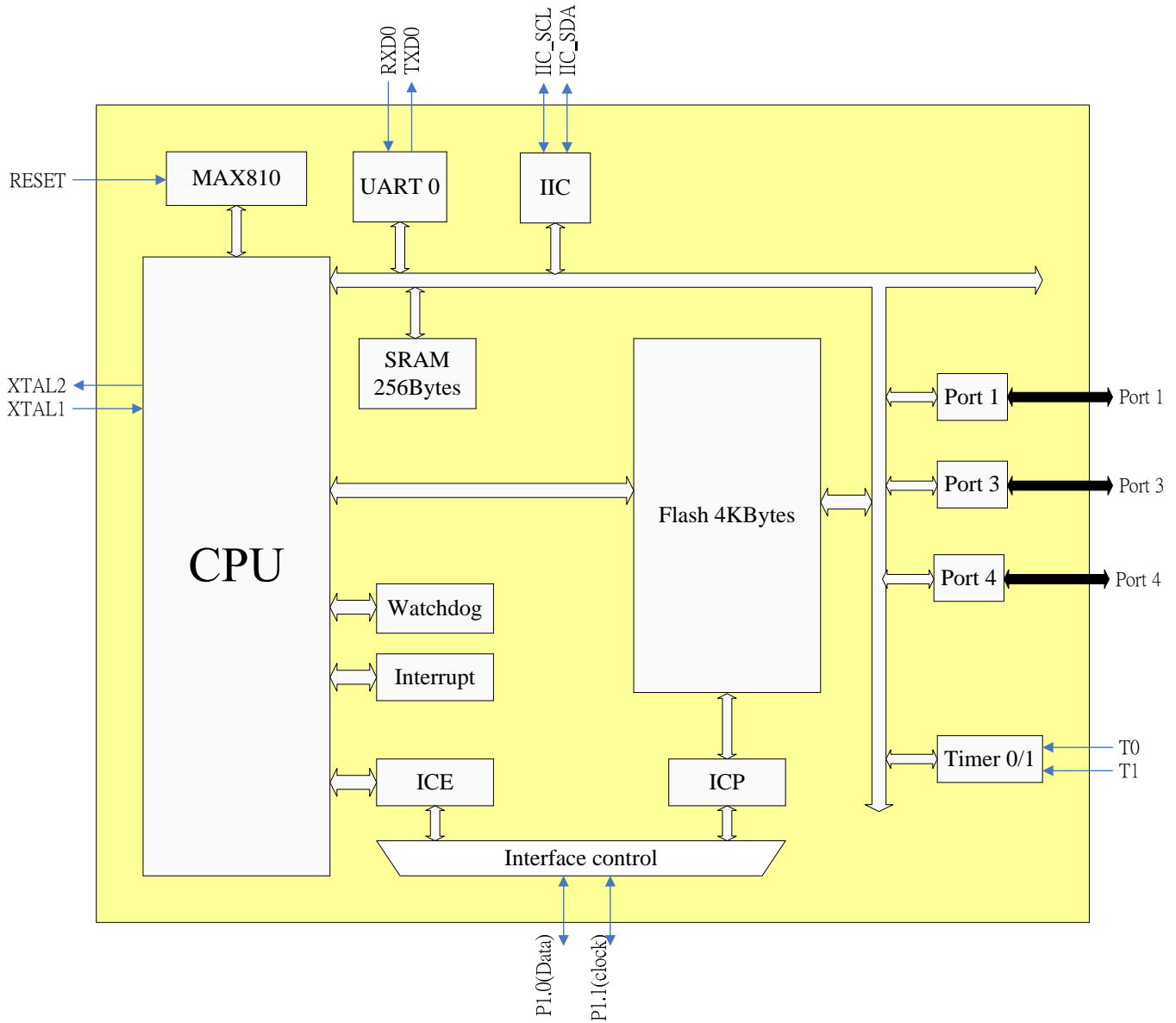
Pin Configuration



Notes :

1. The pin Reset/P3.6 factory default is Reset, user must keep this pin at low during power-up. User can configure it to GPIO (P3.6) by a flash programmer.
2. To avoid accidentally entering ISP-Mode(refer to section 13.4), care must be taken not asserting pulse signal at P3.0 during power-up while P1.5 are set to high.
3. To apply ICP function, SDA/P1.0 and SCL/P1.1 must be set to Bi-direction mode if they are configured as GPIO in system.

Block Diagram



Pin Description

20L PDIP/SOP	Symbol	I/O	Description
1	RESET(default)/ P3.6	I/O	Reset pin(default) & Bit 6 of port 3
2	P3.0/RXD/#INT0/T0	I/O	Bit 0 of port 3 & Serial interface channel receive/transmit data & (External interrupt 0 or Timer 0 external input)
3	P3.1/TXD/#INT1/T1	I/O	Bit 1 of port 3 & Serial interface channel transmit data or receive clock in mode 0 & (External interrupt 1 or Timer 1 external input)
4	XTAL2/P4.0	I/O	Crystal output & Bit 0 of port 4
5	XTAL1/P4.1	I/O	Crystal input & Bit 1 of port 4
6	P3.2/#INT0	I/O	Bit 2 of port 3 & External interrupt 0
7	P3.3/#INT1	I/O	Bit 3 of port 3 & External interrupt 1
8	P3.4/T0	I/O	Bit 4 of port 3 & Timer 0 external input
9	P3.5/T1	I/O	Bit 5 of port 3 & Timer 1 external input
10	VSS	I	Power supply
11	P3.7	I/O	Bit 7 of port 3
12	P1.0/SDA	I/O	Bit 0 of port 1 & On-Chip Instrumentation Command and data I/O pin synchronous to OCI_SCL in ICE and ICP functions
13	P1.1/SCL	I/O	Bit 1 of port 1 & On-Chip Instrumentation Clock I/O pin of ICE and ICP functions
14	P1.2/T0	I/O	Bit 2 of port 1 & Timer 0 external input
15	P1.3/T1	I/O	Bit 3 of port 1 & Timer 1 external input
16	P1.4/#INT0/T0/RESET	I/O	Bit 4 of port 1 & (External interrupt 0 or Timer 0 external input or RESET)
17	P1.5/#INT1/T1	I/O	Bit 5 of port 1 & (External interrupt 1 or Timer 1 external input)
18	P1.6	I/O	Bit 6 of port 1
19	P1.7	I/O	Bit 7 of port 1
20	VDD	I	Power supply

The Special Function Pin Can configured as below Table (Can be Select By SFR) :

Signal	Default	Option1	Option2	Option3
#INT0	6(P3.2)	2(P3.0)	15(P1.3)	16(P1.4)
#INT1	7(P3.3)	3(P3.1)	14(P1.2)	17(P1.5)
T0	8(P3.4)	14(P1.2)	16(P1.4)	2(P3.0)
T1	9(P3.5)	15(P1.3)	17(P1.5)	3(P3.1)

The RESET Pin Can configured as below Table (Can be Select By ICP or ISP) :

Signal	Default	Option1
RESET	1	16

The RESET Pin Can Be configured as I/O port P3.6 , when user use on-chip hardware RESET mechanism .

The XTAL2 can be configured as I/O port P4.0 by ICP or in ISP mode . when user use Oscillator (XTAL1 as clock input) or on-chip RC Oscillator is set to main system clock source .

The XTAL1 can be configured as I/O port P4.1 by ICP or in ISP mode , when user use on-chip RC Oscillator is set to main system clock source .

Special Function Register (SFR)

A map of the Special Function Registers is shown as below:

Hex\Bin	X000	X001	X010	X011	X100	X101	X110	X111	Bin/Hex
F8	IICS	IICCTL	IICA1	IICA2	IICRWD	IICEBT			FF
F0	B							TAKEY	F7
E8	P4								EF
E0	ACC	ISPFALH	ISPFAL	ISPFD	ISPFC		LVC	SWRES	E7
D8			P3M0	P3M1	P4M0	P4M1			DF
D0	PSW				P1M0	P1M1			D7
C8									CF
C0	IRCON								C7
B8	IEN1	IP1	S0RELH						BF
B0	P3						WDTC	WDTK	B7
A8	IEN0	IP0	S0RELL						AF
A0				P1WE	P3WE				A7
98	S0CON	S0BUF							9F
90	P1	AUX							97
88	TCON	TMOD	TL0	TL1	TH0	TH1	CKCON	IFCON	8F
80		SP	DPL	DPH	DPL1	DPH1		PCON	87
Hex\Bin	X000	X001	X010	X011	X100	X101	X110	X111	Bin/Hex

Note: Special Function Registers reset values and description for SM39R4051

Register	Location	Reset value	Description
SP	81h	07h	Stack Pointer
DPL	82h	00h	Data Pointer 0 low byte
DPH	83h	00h	Data Pointer 0 high byte
DPL1	84h	00h	Data Pointer 1 low byte
DPH1	85h	00h	Data Pointer 1 high byte
PCON	87h	40h	Power Control
TCON	88h	00h	Timer/Counter Control
TMOD	89h	00h	Timer Mode Control
TL0	8Ah	00h	Timer 0, low byte
TL1	8Bh	00h	Timer 1, low byte
TH0	8Ch	00h	Timer 0, high byte
TH1	8Dh	00h	Timer 1, high byte
CKCON	8Eh	10h	Clock control register
IFCON	8Fh	40h	Interface control register
P1	90h	FFh	Port 1
AUX	91h	00h	Auxiliary register

Specifications subject to change without notice contact your sales representatives for the most recent information.

Register	Location	Reset value	Description
S0CON	98h	00h	Serial Port 0, Control Register
S0BUF	99h	00h	Serial Port 0, Data Buffer
P1WE	A3h	FFh	Port 1 output enable
P3WE	A4h	FFh	Port 3 output enable
IEN0	A8h	00h	Interrupt Enable Register 0
IP0	A9h	00h	Interrupt Priority Register 0
S0RELL	AAh	00h	Serial Port 0, Reload Register, low byte
P3	B0h	FFh	Port 3
WDTC	B6h	04h	Watchdog timer control register
WDTK	B7h	00h	Watchdog timer refresh key.
IEN1	B8h	00h	Interrupt Enable Register 1
IP1	B9h	00h	Interrupt Priority Register 1
S0RELH	BAh	00h	Serial Port 0, Reload Register, high byte
IRCON	C0h	00h	Interrupt Request Control Register
PSW	D0h	00h	Program Status Word
P1M0	D4h	00h	Port 1 output mode 0
P1M1	D5h	00h	Port 1 output mode 1
P3M0	DAh	00h	Port 3 output mode 0
P3M1	DBh	00h	Port 3 output mode 1
P4M0	DCh	00h	Port 4 output mode 0
P4M1	DDh	00h	Port 4 output mode 1
ACC	E0h	00h	Accumulator
ISPF AH	E1h	FFh	ISP Flash Address-High register
ISPF AL	E2h	FFh	ISP Flash Address-Low register
ISPF D	E3h	FFh	ISP Flash Data register
ISPF C	E4h	00h	ISP Flash control register
LVC	E6h	20h	Low voltage control register
SWRES	E7h	00h	Software Reset register
P4	E8h	FFh	Port 4
B	F0h	00h	B Register
TAKEY	F7h	00h	Time Access Key register
IICS	F8h	00h	IIC status register
IICCTL	F9h	04h	IIC control register
IICA1	FAh	A0h	IIC channel 1 Address 1 register
IICA2	FBh	60h	IIC channel 1 Address 2 register
IICRWD	FCh	00h	IIC channel 1 Read / Write Data buffer
IICS2	FDh	00h	IIC status2 register

Function Description

1. General Features

SM39R4051 is an 8-bit micro-controller. All of its functions and the detailed meanings of SFR will be given in the following sections.

1.1. Embedded Flash

The program can be loaded into the embedded 4KB/2KB Flash memory via its writer or In-System Programming (ISP). The high-quality Flash has a 100K-write cycle life, suitable for re-programming and data recording as EEPROM.

1.2. IO Pads

The SM39R4051 has three I/O ports: Port 1, Port 3 and Port 4. Ports 1, 3 are 8-bit ports and Port 4 is a 2-bit port. These are: quasi-bidirectional (standard 8051 port outputs), push-pull, open drain, and input-only. As description in section 5.

At 20L Package (DIP/SOP), the Int0, Int1, T0, T1 signal can be configured to other I/O as below:

Signal	Default	Option1	Option2	Option3
#INT0	6(P3.2)	2(P3.0)	15(P1.3)	16(P1.4)
#INT1	7(P3.3)	3(P3.1)	14(P1.2)	17(P1.5)
T0	8(P3.4)	14(P1.2)	16(P1.4)	2(P3.0)
T1	9(P3.5)	15(P1.3)	17(P1.5)	3(P3.1)

The RESET Pin Can Be configured as I/O port P3.6, when user use on-chip hardware RESET mechanism.

The XTAL2 and XTAL1 can be configured as I/O port by ICP or in ISP mode, when user use external OSC or on-chip RC Oscillator is set to main system clock source, show as below:

		External OSC	Internal OSC
20L package	Xtal1	Xtal1	P4.1
	Xtal2	P4.0	P4.0

All the pins on P1, P3 and P4 are with slew rate adjustment to reduce EMI. The other way to reduce EMI is to disable the ALE output if unused. This is selected by its SFR. The IO pads can withstand 4KV ESD in human body mode guaranteeing the SM39R4051's quality in high electro-static environments.

1.3. Instruction timing Selection

The conventional 52-series MCUs are 12T, i.e., 12 oscillator clocks per machine cycle. SM39R4051 is a 1T to 8T MCU, i.e., its machine cycle is one-clock to eight-clock. In the other words, it can execute one instruction within one clock to only eight clocks.

Mnemonic: CKCON							Address: 8Eh	
7	6	5	4	3	2	1	0	Reset
-	ITS			-	-	-	-	10H

ITS: Instruction timing select.

ITS [6:4]	Instruction timing
000	1T mode
001	2T mode (default)
010	3T mode

Specifications subject to change without notice contact your sales representatives for the most recent information.

011	4T mode
100	5T mode
101	6T mode
110	7T mode
111	8T mode

The default is in 2T mode, and it can be changed to another Instruction timing mode if CKCON [6:4] (at address 8Eh) is change any time. Not every instruction can be executed with one machine cycle. The exact machine cycle number for all the instructions are given in the next section.

1.4. RESET

1.4.1. Hardware RESET function

SM39R4051 provides on-chip hardware RESET mechanism, the reset duration is programmable by writer or ISP.

on-chip hardware RESET duration
25ms (default)
200ms
100ms
50ms
16ms
8ms
4ms

1.4.2. Software RESET function

SM39R4051 provides one software reset mechanism to reset whole chip. To perform a software reset, the firmware must write three specific values 55h, AAh and 5Ah sequentially to the TAKEY register to enable the Software Reset register (SWRES) write attribute. After SWRES register obtain the write authority, the firmware can write FFh to the SWRES register. The hardware will decode a reset signal that "OR" with the other hardware reset. The SWRES register is self-reset at the end of the software reset procedure.

Mnemonic	Description	Direct	Bit 7	Bit 6	Bit 5	Bit 4	Bit 3	Bit 2	Bit 1	Bit 0	RESET
Software Reset function											
TAKEY	Time Access Key register	F7h	TAKEY [7:0]								00H
SWRES	Software Reset register	E7h	SWRES [7:0]								00H

1.4.3. Time Access Key register (TAKEY)

Mnemonic: TAKEY							Address: F7H				
7	6	5	4	3	2	1	0	Reset			
TAKEY [7:0]								00H			

Software reset register (SWRES) is read-only by default; software must write three specific values 55h, AAh and 5Ah sequentially to the TAKEY register to enable the SWRES register write attribute. That is:

```
MOV TAKEY, #55h
MOV TAKEY, #0AAh
MOV TAKEY, #5Ah
```

1.4.4. Software Reset register (SWRES)

Mnemonic: SWRES							Address: E7H	
7	6	5	4	3	2	1	0	Reset
SWRES [7:0]								00H

SWRES [7:0]: Software reset register bit. These 8-bit is self-reset at the end of the reset procedure.

SWRES [7:0] = FFh, software reset.

SWRES [7:0] = 00h ~ FEh, MCU no action.

1.4.5. Example of software reset

```
MOV TAKEY, #55h
MOV TAKEY, #0AAh
MOV TAKEY, #5Ah ; enable SWRES write attribute
MOV SWRES, #0FFh; software reset MCU
```

1.5. Clocks

The default clock is the external crystal. This clock is used during the initialization stage. The major work of the initialization stage is to determine the clock source used in normal operation.

The internal clock sources are from the on-chip RC-Oscillator with programmable frequency outputs as table 1-1, the clock source can set by writer or ICP.

Table 1-1: Selection of clock source

Clock source
external crystal (use XTAL1 and XTAL2 pins) (default)
external crystal (only use XTAL1, the XTAL2 define as I/O)
20MHz from on-chip RC-Oscillator
16MHz from on-chip RC-Oscillator
12MHz from on-chip RC-Oscillator
8MHz from on-chip RC-Oscillator
4MHz from on-chip RC-Oscillator
2MHz from on-chip RC-Oscillator
1MHz from on-chip RC-Oscillator

2. Instruction Set

All SM39R4051 instructions are binary code compatible and perform the same functions as they do with the industry standard 8051. The following tables give a summary of the instruction set cycles of the SM39R4051 Microcontroller core.

Table 2-1: Arithmetic operations

Mnemonic	Description	Code	Bytes	Cycles
ADD A,Rn	Add register to accumulator	28-2F	1	1
ADD A,direct	Add direct byte to accumulator	25	2	2
ADD A,@Ri	Add indirect RAM to accumulator	26-27	1	2
ADD A,#data	Add immediate data to accumulator	24	2	2
ADDC A,Rn	Add register to accumulator with carry flag	38-3F	1	1
ADDC A,direct	Add direct byte to A with carry flag	35	2	2
ADDC A,@Ri	Add indirect RAM to A with carry flag	36-37	1	2
ADDC A,#data	Add immediate data to A with carry flag	34	2	2
SUBB A,Rn	Subtract register from A with borrow	98-9F	1	1
SUBB A,direct	Subtract direct byte from A with borrow	95	2	2
SUBB A,@Ri	Subtract indirect RAM from A with borrow	96-97	1	2
SUBB A,#data	Subtract immediate data from A with borrow	94	2	2
INC A	Increment accumulator	04	1	1
INC Rn	Increment register	08-0F	1	2
INC direct	Increment direct byte	05	2	3
INC @Ri	Increment indirect RAM	06-07	1	3
INC DPTR	Increment data pointer	A3	1	1
DEC A	Decrement accumulator	14	1	1
DEC Rn	Decrement register	18-1F	1	2
DEC direct	Decrement direct byte	15	2	3
DEC @Ri	Decrement indirect RAM	16-17	1	3
MUL AB	Multiply A and B	A4	1	5
DIV	Divide A by B	84	1	5
DA A	Decimal adjust accumulator	D4	1	1

Table 2-2: Logic operations

Mnemonic	Description	Code	Bytes	Cycles
ANL A,Rn	AND register to accumulator	58-5F	1	1
ANL A,direct	AND direct byte to accumulator	55	2	2
ANL A,@Ri	AND indirect RAM to accumulator	56-57	1	2
ANL A,#data	AND immediate data to accumulator	54	2	2
ANL direct,A	AND accumulator to direct byte	52	2	3
ANL direct,#data	AND immediate data to direct byte	53	3	4
ORL A,Rn	OR register to accumulator	48-4F	1	1
ORL A,direct	OR direct byte to accumulator	45	2	2
ORL A,@Ri	OR indirect RAM to accumulator	46-47	1	2
ORL A,#data	OR immediate data to accumulator	44	2	2
ORL direct,A	OR accumulator to direct byte	42	2	3
ORL direct,#data	OR immediate data to direct byte	43	3	4
XRL A,Rn	Exclusive OR register to accumulator	68-6F	1	1
XRL A,direct	Exclusive OR direct byte to accumulator	65	2	2
XRL A,@Ri	Exclusive OR indirect RAM to accumulator	66-67	1	2
XRL A,#data	Exclusive OR immediate data to accumulator	64	2	2
XRL direct,A	Exclusive OR accumulator to direct byte	62	2	3
XRL direct,#data	Exclusive OR immediate data to direct byte	63	3	4
CLR A	Clear accumulator	E4	1	1
CPL A	Complement accumulator	F4	1	1
RL A	Rotate accumulator left	23	1	1
RLC A	Rotate accumulator left through carry	33	1	1
RR A	Rotate accumulator right	03	1	1
RRC A	Rotate accumulator right through carry	13	1	1
SWAP A	Swap nibbles within the accumulator	C4	1	1

Table 2-3: Data transfer

Mnemonic	Description	Code	Bytes	Cycles
MOV A,Rn	Move register to accumulator	E8-EF	1	1
MOV A,direct	Move direct byte to accumulator	E5	2	2
MOV A,@Ri	Move indirect RAM to accumulator	E6-E7	1	2
MOV A,#data	Move immediate data to accumulator	74	2	2
MOV Rn,A	Move accumulator to register	F8-FF	1	2
MOV Rn,direct	Move direct byte to register	A8-AF	2	4
MOV Rn,#data	Move immediate data to register	78-7F	2	2
MOV direct,A	Move accumulator to direct byte	F5	2	3
MOV direct,Rn	Move register to direct byte	88-8F	2	3
MOV direct1,direct2	Move direct byte to direct byte	85	3	4
MOV direct,@Ri	Move indirect RAM to direct byte	86-87	2	4
MOV direct,#data	Move immediate data to direct byte	75	3	3
MOV @Ri,A	Move accumulator to indirect RAM	F6-F7	1	3
MOV @Ri,direct	Move direct byte to indirect RAM	A6-A7	2	5
MOV @Ri,#data	Move immediate data to indirect RAM	76-77	2	3
MOV DPTR,#data16	Load data pointer with a 16-bit constant	90	3	3
MOVC A,@A+DPTR	Move code byte relative to DPTR to accumulator	93	1	3
MOVC A,@A+PC	Move code byte relative to PC to accumulator	83	1	3
PUSH direct	Push direct byte onto stack	C0	2	4
POP direct	Pop direct byte from stack	D0	2	3
XCH A,Rn	Exchange register with accumulator	C8-CF	1	2
XCH A,direct	Exchange direct byte with accumulator	C5	2	3
XCH A,@Ri	Exchange indirect RAM with accumulator	C6-C7	1	3
XCHD A,@Ri	Exchange low-order nibble indir. RAM with A	D6-D7	1	3

Table 2-4: Program branches

Mnemonic	Description	Code	Bytes	Cycles
ACALL addr11	Absolute subroutine call	xxx11	2	6
LCALL addr16	Long subroutine call	12	3	6
RET	from subroutine	22	1	4
RETI	from interrupt	32	1	4
AJMP addr11	Absolute jump	xxx01	2	3
LJMP addr16	Long iump	02	3	4
SJMP rel	Short jump (relative addr.)	80	2	3
JMP @A+DPTR	Jump indirect relative to the DPTR	73	1	2
JZ rel	Jump if accumulator is zero	60	2	3
JNZ rel	Jump if accumulator is not zero	70	2	3
JC rel	Jump if carry flag is set	40	2	3
JNC	Jump if carry flag is not set	50	2	3
JB bit,rel	Jump if direct bit is set	20	3	4
JNB bit,rel	Jump if direct bit is not set	30	3	4
JBC bit,direct rel	Jump if direct bit is set and clear bit	10	3	4
CJNE A,direct rel	Compare direct byte to A and jump if not equal	B5	3	4
CJNE A,#data rel	Compare immediate to A and jump if not equal	B4	3	4
CJNE Rn,#data rel	Compare immed. to reg. and jump if not equal	B8-BF	3	4
CJNE @Ri,#data rel	Compare immed. to ind. and jump if not equal	B6-B7	3	4
DJNZ Rn,rel	Decrement register and jump if not zero	D8-DF	2	3
DJNZ direct,rel	Decrement direct byte and jump if not zero	D5	3	4
NOP	No operation	00	1	1

Table 2-5: Boolean manipulation

Mnemonic	Description	Code	Bytes	Cycles
CLR C	Clear carry flag	C3	1	1
CLR bit	Clear direct bit	C2	2	3
SETB C	Set carry flag	D3	1	1
SETB bit	Set direct bit	D2	2	3
CPL C	Complement carry flag	B3	1	1
CPL bit	Complement direct bit	B2	2	3
ANL C,bit	AND direct bit to carry flag	82	2	2
ANL C,/bit	AND complement of direct bit to carry	B0	2	2
ORL C,bit	OR direct bit to carry flag	72	2	2
ORL C,/bit	OR complement of direct bit to carry	A0	2	2
MOV C,bit	Move direct bit to carry flag	A2	2	2
MOV bit,C	Move carry flag to direct bit	92	2	3

3. Memory Structure

The SM39R4051 memory structure follows general 8052 structure. It is 4KB program memory.

3.1. Program Memory

The SM39R4051 has 4KB on-chip flash memory which can be used as general program memory or EEPROM, on which include up to 1K byte specific ISP service program memory space. The address range for the 4K byte is \$000 to \$FFF. The address range for the ISP service program is \$C00 to \$FFF. The ISP service program size can be partitioned as N blocks of 256 byte (N=0 to 4). When N=0 means no ISP service program space available, total 4K byte memory used as program memory. When N=1 means address \$F00 to \$FFF reserved for ISP service program. When N=2 means memory address \$E00 to \$FFF reserved for ISP service program...etc. Value N can be set and programmed into SM39R4051 by the writer or ICP. It can be used to record any data as EEPROM. The procedure of this EEPROM application function is described in the section 13 on internal ISP.

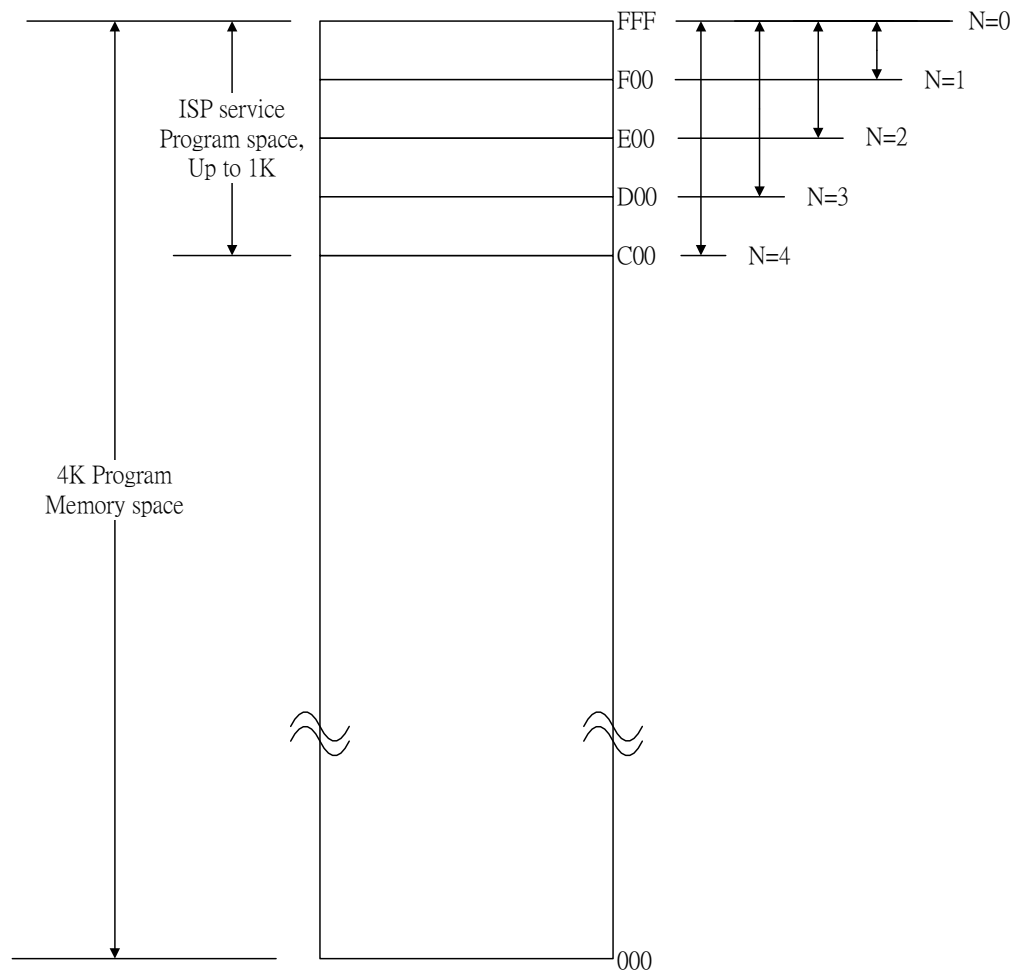


Fig. 3-1: SM39R4051 programmable Flash

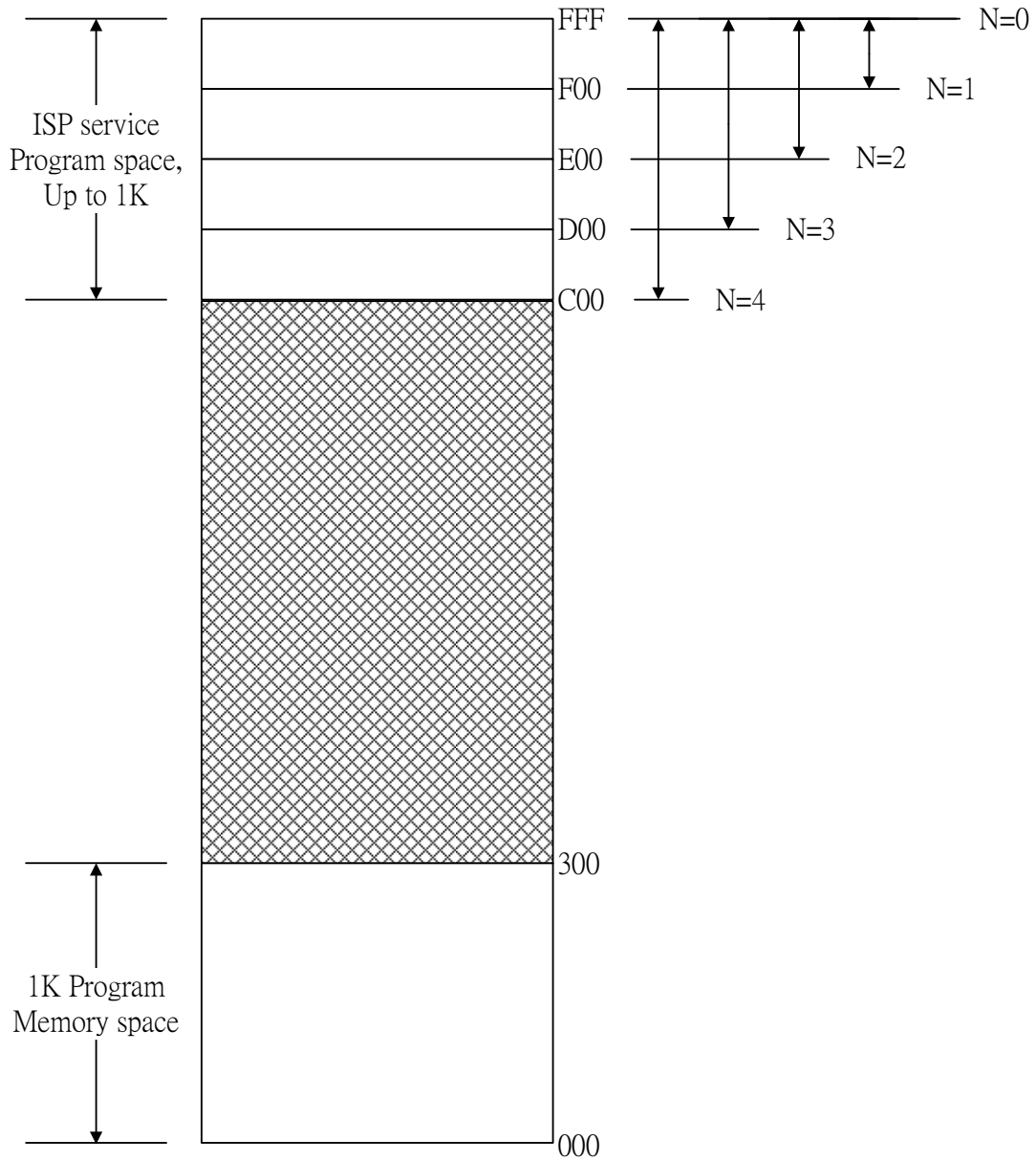


Fig. 3-2 : SM39R2051 programmable Flash

3.2. Data Memory

The SM39R4051 has 256Bytes on-chip SRAM; 256 Bytes of it are the same as general 8052 internal memory structure

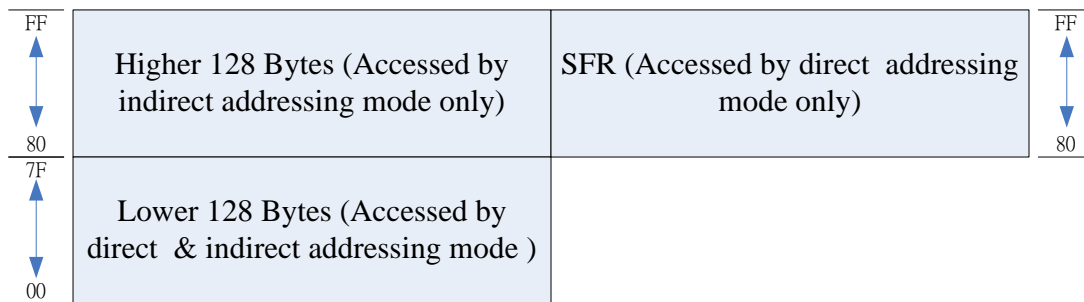


Fig. 3-3: RAM architecture

Specifications subject to change without notice contact your sales representatives for the most recent information.

3.2.1. Data memory - lower 128 byte (00h to 7Fh)

Data memory 00h to FFh is the same as 8052.
The address 00h to 7Fh can be accessed by direct and indirect addressing modes.
Address 00h to 1Fh is register area.
Address 20h to 2Fh is memory bit area.
Address 30h to 7Fh is for general memory area.

3.2.2. Data memory - higher 128 byte (80h to FFh)

The address 80h to FFh can be accessed by indirect addressing mode.
Address 80h to FFh is data area.

4. CPU Engine

The SM39R4051 engine is composed of four components:

- Control unit
- Arithmetic – logic unit
- Memory control unit
- RAM and SFR control unit

The SM39R4051 engine allows to fetch instruction from program memory and to execute using RAM or SFR. The following chapter describes the main engine register.

Mnemonic	Description	Direct	Bit 7	Bit 6	Bit 5	Bit 4	Bit 3	Bit 2	Bit 1	Bit 0	RESET
8051 Core											
ACC	Accumulator	E0h	ACC.7	ACC.6	ACC.5	ACC.4	ACC.3	ACC.2	ACC.1	ACC.0	00H
B	B register	F0h	B.7	B.6	B.5	B.4	B.3	B.2	B.1	B.0	00H
PSW	Program status word	D0h	CY	AC	F0	RS[1:0]		OV	PSW.1	P	00H
SP	Stack Pointer	81h	SP[7:0]								07H
DPL	Data pointer low 0	82h	DPL[7:0]								00H
DPH	Data pointer high 0	83h	DPH[7:0]								00H
DPL1	Data pointer low 0	84h	DPL1[7:0]								00H
DPH1	Data pointer high 0	85h	DPH1[7:0]								00H
AUX	Auxiliary register	91h	BRGS	-	-	PTS[1:0]		PINTS[1:0]		DPS	00H
IFCON	Interface control register	8Fh	-	CDPR	-	-	-	-	-	ISPE	00H

4.1. Accumulator

ACC is the Accumulator register. Most instructions use the accumulator to store the operand.

Mnemonic: ACC								Address: E0h	
7	6	5	4	3	2	1	0	Reset	
ACC.7	ACC.6	ACC.5	ACC.4	ACC.3	ACC.2	ACC.1	ACC.0	00h	

ACC[7:0]: The A (or ACC) register is the standard 8052 accumulator.

4.2. B Register

The B register is used during multiply and divide instructions. It can also be used as a scratch pad register to store temporary data.

Mnemonic: B								Address: F0h	
7	6	5	4	3	2	1	0	Reset	
B.7	B.6	B.5	B.4	B.3	B.2	B.1	B.0	00h	

B[7:0]: The B register is the standard 8052 register that serves as a second accumulator.

4.3. Program Status Word

Mnemonic: PSW							Address: D0h	
7	6	5	4	3	2	1	0	Reset
CY	AC	F0	RS [1:0]		OV	F1	P	00h

CY: Carry flag.

AC: Auxiliary Carry flag for BCD operations.

F0: General purpose Flag 0 available for user.

RS[1:0]: Register bank select, used to select working register bank.

RS[1:0]	Bank Selected	Location
00	Bank 0	00h – 07h
01	Bank 1	08h – 0Fh
10	Bank 2	10h – 17h
11	Bank 3	18h – 1Fh

OV: Overflow flag.

F1: General purpose Flag 1 available for user.

P: Parity flag, affected by hardware to indicate odd/even number of “one” bits in the Accumulator, i.e. even parity.

4.4. Stack Pointer

The stack pointer is a 1-byte register initialized to 07h after reset. This register is incremented before PUSH and CALL instructions, causing the stack to start from location 08h.

Mnemonic: SP							Address: 81h	
7	6	5	4	3	2	1	0	Reset
SP [7:0]								07h

SP[7:0]: The Stack Pointer stores the scratchpad RAM address where the stack begins. In other words, it always points to the top of the stack.

4.5. Data Pointer

The data pointer (DPTR) is 2-bytes wide. The lower part is DPL, and the highest is DPH. It can be loaded as a 2-byte register (e.g. MOV DPTR, #data16) or as two separate registers (e.g. MOV DPL, #data8). It is generally used to access the external code or data space (e.g. MOVC A, @A+DPTR, @DPTR respectively).

Mnemonic: DPL							Address: 82h	
7	6	5	4	3	2	1	0	Reset
DPL [7:0]								00h

DPL[7:0]: Data pointer Low 0

Mnemonic: DPH							Address: 83h	
7	6	5	4	3	2	1	0	Reset
DPH [7:0]								00h

DPH [7:0]: Data pointer High 0

4.6. Data Pointer 1

The Dual Data Pointer accelerates the moves of data block. The standard DPTR is a 16-bit register that is used to address external memory or peripherals. In the SM39R4051 core the standard data pointer is called DPTR, the second data pointer is called DPTR1. The data pointer select bit chooses the active pointer. The data pointer select bit is located in LSB of AUX register (DPS).

The user switches between pointers by toggling the LSB of AUX register. All DPTR-related instructions use the currently selected DPTR for any activity.

Mnemonic: DPL1							Address: 84h	
7	6	5	4	3	2	1	0	Reset
DPL1 [7:0]								00h

DPL1[7:0]: Data pointer Low 1

Mnemonic: DPH1							Address: 85h	
7	6	5	4	3	2	1	0	Reset
DPH1 [7:0]								00h

DPH1[7:0]: Data pointer High 1

Mnemonic: AUX							Address: 91h	
7	6	5	4	3	2	1	0	Reset
BRGS	-	-	PTS[1:0]		PINTS[1:0]		DPS	00H

DPS: Data Pointer selects register.
DPS = 1 is selected DPTR1.

4.7. Interface control register

Mnemonic: IFCON							Address: 8Fh	
7	6	5	4	3	2	1	0	Reset
-	CDPR	-	-	-	-	-	ISPE	00H

CDPR: code protect (Read Only)

ISPE: ISP function enable bit

ISPE = 1, enable ISP function

ISPE = 0, disable ISP function

5. GPIO

The SM39R4051 has three I/O ports: Port 1, Port 3 and Port 4. Ports 1, 3 are 8-bit ports and Port 4 is a 2-bit port. These are: quasi-bidirectional (standard 8051 port outputs), push-pull, open drain, and input-only. Two configuration registers for each port select the output type for each port pin. All I/O port pins on the SM39R4051 may be configured by software to one of four types on a pin-by-pin basis, shown as below:

Mnemonic	Description	Direct	Bit 7	Bit 6	Bit 5	Bit 4	Bit 3	Bit 2	Bit 1	Bit 0	RESET	
I/O port function register												
P1M0	Port 1 output mode 0	D4h					P1M0[7:0]				00H	
P1M1	Port 1 output mode 1	D5h					P1M1[7:0]				00H	
P3M0	Port 3 output mode 0	DAh					P3M0[7:0]				00H	
P3M1	Port 3 output mode 1	DBh					P3M1[7:0]				00H	
P4M0	Port 4 output mode 0	DCh									P4M0[1:0]	00H
P4M1	Port 4 output mode 1	DDh									P4M1[1:0]	00H
P1WE	Port 3 output enable	A3h					P3WE[7:0]				FFH	
P3WE	Port 1 output enable	A4h					P1WE[7:0]				FFH	

PxM1.y	PxM0.y	Port output mode
0	0	Quasi-bidirectional (standard 8051 port outputs) (pull-up)
0	1	Push-pull
1	0	Input only (high-impedance)
1	1	Open drain

The RESET Pin Can Be configured as I/O port P3.6 , when user use on-chip hardware RESET mechanism .

The XTAL2 and XTAL1 can be configured as I/O port by ICP or in ISP mode , when user use external OSC or on-chip RC Oscillator is set to main system clock source .

Mnemonic: P1WE **Address: A3h**

7	6	5	4	3	2	1	0	Reset
P1.7	P1.6	P1.5	P1.4	P1.3	P1.2	P1.1	P1.0	FFH

Mnemonic: P3WE **Address: A4h**

7	6	5	4	3	2	1	0	Reset
P3.7	P3.6	P3.5	P3.4	P3.3	P3.2	P3.1	P3.0	FFH

For general-purpose applications, every pin can be assigned to either high or low independently as given below:

Mnemonic	Description	Direct	Bit 7	Bit 6	Bit 5	Bit 4	Bit 3	Bit 2	Bit 1	Bit 0	RESET
Ports											
Port 4	Port 4	E8h	-	-	-	-	-	-	P4.1	P4.0	FFh
Port 3	Port 3	B0h	P3.7	P3.6	P3.5	P3.4	P3.3	P3.2	P3.1	P3.0	FFh
Port 1	Port 1	90h	P1.7	P1.6	P1.5	P1.4	P1.3	P1.2	P1.1	P1.0	FFh

Mnemonic: P1 **Address: 90h**

7	6	5	4	3	2	1	0	Reset
P1.7	P1.6	P1.5	P1.4	P1.3	P1.2	P1.1	P1.0	FFh

P1.7~ 0: Port1 [7] ~ Port1 [0]

Mnemonic: P3 **Address: B0h**

7	6	5	4	3	2	1	0	Reset
P3.7	P3.6	P3.5	P3.4	P3.3	P3.2	P3.1	P3.0	FFh

P3.7~ 0: Port3 [7] ~ Port3 [0]

Specifications subject to change without notice contact your sales representatives for the most recent information.



Mnemonic: P4						Address: E8h		
7	6	5	4	3	2	1	0	Reset
-	-	-	-	-	-	P4.1	P4.0	FFh

P4.1~ 0: Port4 [1] ~ Port4 [0]

6. Timer 0 and Timer 1

The SM39R4051 has two 16-bit timer/counter registers: Timer 0 and Timer 1. All can be configured for counter or timer operations.

In timer mode, the Timer 0 register or Timer 1 register is incremented every 12 machine cycles, which means that it counts up after every 12 periods of the clock signal.

In counter mode, the register is incremented when the falling edge is observed at the corresponding input pin T0 or T1. Since it takes 2 machine cycles to recognize a 1-to-0 event, the maximum input count rate is 1/2 of the oscillator frequency. There are no restrictions on the duty cycle, however to ensure proper recognition of 0 or 1 state, an input should be stable for at least 1 machine cycle.

Four operating modes can be selected for Timer 0 and Timer 1. Two Special Function registers (TMOD and TCON) are used to select the appropriate mode.

Mnemonic	Description	Direct	Bit 7	Bit 6	Bit 5	Bit 4	Bit 3	Bit 2	Bit 1	Bit 0	RESET	
Timer 0 and 1												
TL0	Timer 0, low byte	8Ah						TL0[7:0]				00h
TH0	Timer 0, high byte	8Ch						TH0[7:0]				00h
TL1	Timer 1, low byte	8Bh						TL1[7:0]				00h
TH1	Timer 1, high byte	8Dh						TH1[7:0]				00h
TMOD	Timer Mode Control	89h	GATE	C/T	M1	M0	GATE	C/T	M1	M0	00h	
TCON	Timer/Counter Control	88h	TF1	TR1	TF0	TR0	IE1	IT1	IE0	IT0	00h	
AUX	Auxiliary register	91h	BRGS	-	-	PTS[1:0]		PINTS[1:0]		DPS	00h	

6.1. Timer/counter mode control register (TMOD)

Mnemonic: TMOD **Address: 89h**

7	6	5	4	3	2	1	0	Reset
GATE	C/T	M1	M0	GATE	C/T	M1	M0	00h
Timer 1				Timer 0				

GATE: If set, enables external gate control (pin INT0 or INT1 for Counter 0 or 1, respectively). When INT0 or INT1 is high, and TRx bit is set (see TCON register), a counter is incremented every falling edge on T0 or T1 input pin

C/T: Selects Timer or Counter operation. When set to 1, a counter operation is performed, when cleared to 0, the corresponding register will function as a timer.

M[1:0]: Selects mode for Timer/Counter 0 or Timer/Counter 1.

M1	M0	Mode	Function
0	0	Mode0	13-bit counter/timer, with 5 lower bits in TL0 or TL1 register and 8 bits in TH0 or TH1 register (for Timer 0 and Timer 1, respectively). The 3 high order bits of TL0 and TL1 are hold at zero.
0	1	Mode1	16-bit counter/timer.
1	0	Mode2	8-bit auto-reload counter/timer. The reload value is kept in TH0 or TH1, while TL0 or TL1 is incremented every machine cycle. When TLx overflows, a value from THx is copied to TLx.
1	1	Mode3	If Timer 1 M1 and M0 bits are set to 1, Timer 1

Specifications subject to change without notice contact your sales representatives for the most recent information.

			stops. If Timer 0 M1 and M0 bits are set to 1, Timer 0 acts as two independent 8 bit timers / counters.
--	--	--	---

6.2. Timer/counter control register (TCON)

Mnemonic: TCON							Address: 88h	
7	6	5	4	3	2	1	0	Reset
TF1	TR1	TF0	TR0	IE1	IT1	IE0	IT0	00h

TF1: Timer 1 overflow flag set by hardware when Timer 1 overflows. This flag can be cleared by software and is automatically cleared when interrupt is processed.

TR1: Timer 1 Run control bit. If cleared, Timer 1 stops.

TF0: Timer 0 overflow flag set by hardware when Timer 0 overflows. This flag can be cleared by software and is automatically cleared when interrupt is processed.

TR0: Timer 0 Run control bit. If cleared, Timer 0 stops.

IE1: Interrupt 1 edge flag. Set by hardware, when falling edge on external pin INT1 is observed. Cleared when interrupt is processed.

IT1: Interrupt 1 type control bit. Selects falling edge or low level on input pin to cause interrupt.

IE0: Interrupt 0 edge flag. Set by hardware, when falling edge on external pin INTO is observed. Cleared when interrupt is processed.

IT0: Interrupt 0 type control bit. Selects falling edge or low level on input pin to cause interrupt.

6.3. T0、T1 signal swapping :

The T0、T1 signal can be configured to other I/O ◦

Mnemonic: AUX							Address: 91h	
7	6	5	4	3	2	1	0	Reset
BRGS	-	-	PTS [1:0]		PINTS[1:0]		DPS	00H

Package = 20 Pin		
PTS [1:0]	T0	T1
0x00	P3.4	P3.5
0x01	P3.0	P3.1
0x10	P1.4	P1.5
0x11	P1.2	P1.3

7. Serial interface 0

The serial buffer consists of two separate registers, a transmit buffer and a receive buffer.

Writing data to the Special Function Register S0BUF sets this data in serial output buffer and starts the transmission. Reading from the S0BUF reads data from the serial receive buffer. The serial port can simultaneously transmit and receive data. It can also buffer 1 byte at receive, which prevents the receive data from being lost if the CPU reads the first byte before transmission of the second byte is completed.

Mnemonic	Description	Direct	Bit 7	Bit 6	Bit 5	Bit 4	Bit 3	Bit 2	Bit 1	Bit 0	RESET
Serial interface 0											
PCON	Power control	87H	SMOD	-	-	-	-	-	STOP	IDLE	40H
AUX	Auxiliary register	91h	BRGS	-	-	PTS[1:0]		PINTS[1:0]		DPS	00H
S0CON	Serial Port 0 control register	98H	SM0	SM1	SM20	RENO	TB80	RB80	TI0	RI0	00H
S0BUF	Serial Port 0 data buffer	99H	S0BUF[7:0]								00H
S0RELL	Serial Port 0 reload register low byte	AAH	S0REL .7	S0REL .6	S0REL .5	S0REL .4	S0REL .3	S0REL .2	S0REL .1	S0REL .0	00H
S0RELH	Serial Port 0 reload register high byte	BAH	-						S0REL .9	S0REL .8	00H

Mnemonic: AUX

Address: 91h

7	6	5	4	3	2	1	0	Reset
BRGS	-	-	PTS[1:0]		PINTS[1:0]		DPS	00H

BRGS: BRGS = 0 –Baud rate generator use Timer 1 TH1 SFR.

BRGS = 1 –Baud rate generator use S0REL SFR.

Mnemonic: S0CON

Address: 98h

7	6	5	4	3	2	1	0	Reset
SM0	SM1	SM20	RENO	TB80	RB80	TI0	RI0	00h

SM0,SM1: Serial Port 0 mode selection.

SM0	SM1	Mode
0	0	0
0	1	1
1	0	2
1	1	3

The 4 modes in UART0, Mode 0 ~ 3, are explained later.

SM20: Enables multiprocessor communication feature

RENO: If set, enables serial reception. Cleared by software to disable reception.

TB80: The 9th transmitted data bit in modes 2 and 3. Set or cleared by the CPU depending on the function it performs such as parity check, multiprocessor communication etc.

RB80: In modes 2 and 3, it is the 9th data bit received. In mode 1, if SM20 is 0, RB80 is the stop bit. In mode 0, this bit is not used. Must be cleared by software.

TI0: Transmit interrupt flag, set by hardware after completion of a serial transfer. Must be cleared by software.

RI0: Receive interrupt flag, set by hardware after completion of a serial reception. Must be cleared by software.

The Serial Interface 0 can operate in the following 4 modes:

Specifications subject to change without notice contact your sales representatives for the most recent information.

SM0	SM1	Mode	Description	Board Rate
0	0	0	Shift register	Fosc/12
0	1	1	8-bit UART	Variable
1	0	2	9-bit UART	Fosc/32 or Fosc/64
1	1	3	9-bit UART	Variable

Here Fosc is the crystal or oscillator frequency.

7.1. Mode 0

Pin RXD0 serves as input and output. TXD0 outputs the shift clock. 8 bits are transmitted with LSB first. The baud rate is fixed at 1/12 of the crystal frequency. Reception is initialized in Mode 0 by setting the flags in S0CON as follows: RI0 = 0 and RENO = 1. In other modes, a start bit when RENO = 1 starts receiving serial data.

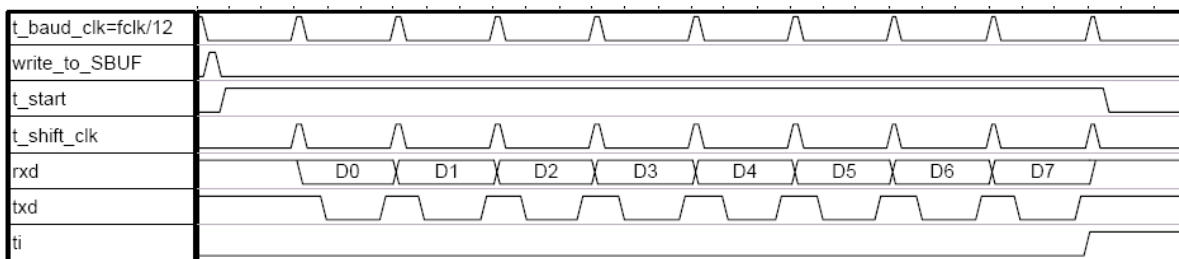


Fig. 7-1: Transmit mode 0 for Serial 0

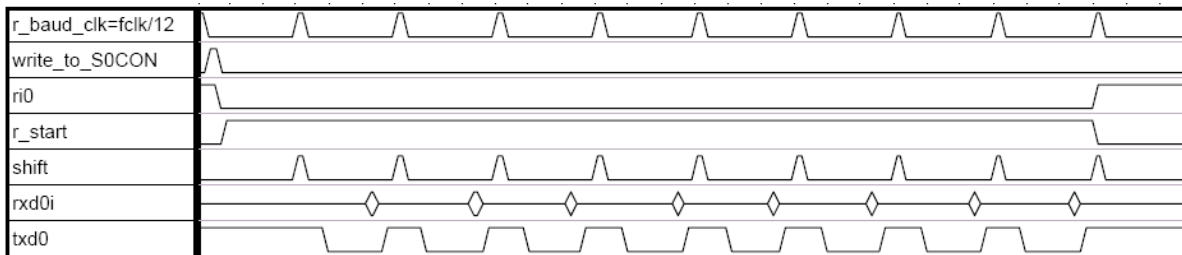


Fig. 7-2: Receive mode 0 for Serial 0

7.2. Mode 1

Pin RXD0 serves as input, and TXD0 serves as serial output. No external shift clock is used, 10 bits are transmitted: a start bit (always 0), 8 data bits (LSB first), and a stop bit (always 1). On receive, a start bit synchronizes the transmission, 8 data bits are available by reading S0BUF, and stop bit sets the flag RB80 in the Special Function Register S0CON. In mode 1 either internal baud rate generator or timer 1 can be use to specify baud rate.



Fig. 7-3: Transmit mode 1 for Serial 0

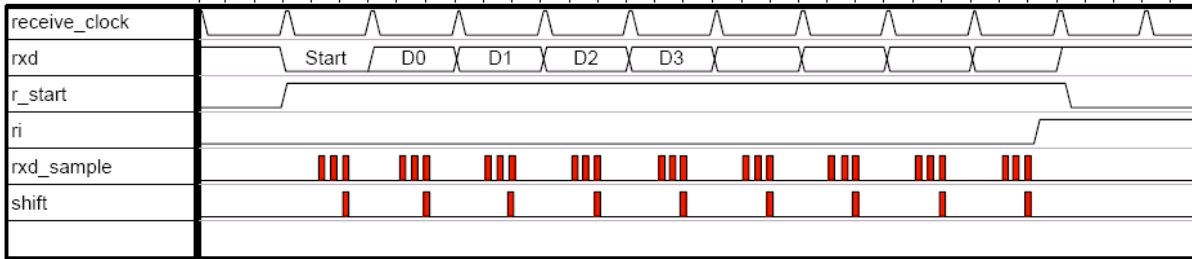


Fig. 7-4: Receive mode 1 for Serial 0

7.3. Mode 2

This mode is similar to Mode 1, with two differences. The baud rate is fixed at 1/32 (SMOD=1) or 1/64 (SMOD=0) of oscillator frequency and 11 bits are transmitted or received: a start bit (0), 8 data bits (LSB first), a programmable 9th bit, and a stop bit (1). The 9th bit can be used to control the parity of the serial interface: at transmission, bit TB80 in S0CON is output as the 9th bit, and at receive, the 9th bit affects RB80 in Special Function Register S0CON.

7.4. Mode 3

The only difference between Mode 2 and Mode 3 is that in Mode 3 either internal baud rate generator or timer 1 can be used to specify baud rate.



Fig. 7-5: Transmit modes 2 and 3 for Serial 0

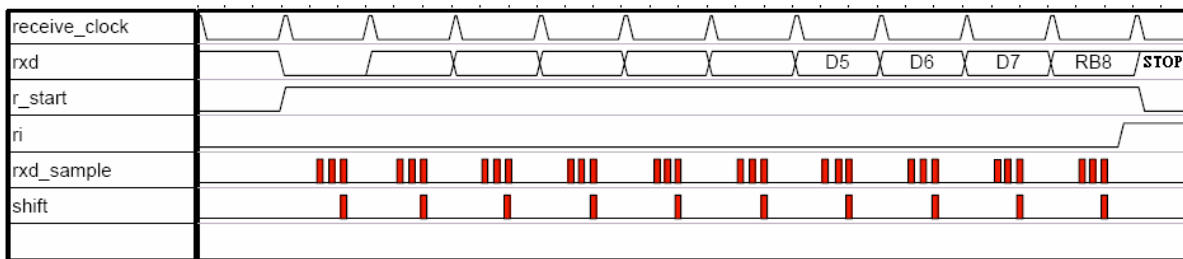


Fig. 7-6: Receive modes 2 and 3 for Serial 0

7.5. Multiprocessor communication of Serial Interface 0

The feature of receiving 9 bits in Modes 2 and 3 of Serial Interface 0 can be used for multiprocessor communication. In this case, the slave processors have bit SM20 in S0CON. When the master processor outputs slave's address, it sets the 9th bit to 1, causing a serial port receive interrupt in all the slaves. The slave processors compare the received byte with their network address. If there is a match, the addressed slave will clear SM20 and receive the rest of the message, while other slaves will leave SM20 bit unaffected and ignore this message. After addressing the slave, the host will output the rest of the message with the 9th bit set to 0, so no serial port receive interrupt will be generated in unselected slaves.

7.6. Baud rate generator

7.6.1. Serial interface 0 modes 1 and 3

(a) When BRGS = 0 (in SFR AUX):

$$\text{Baud Rate} = \frac{2^{\text{SMOD}} \times F_{\text{OSC}}}{32 \times 12 \times (256 - \text{TH1})}$$

(b) When BRGS = 1 (in SFR AUX):

$$\text{Baud Rate} = \frac{2^{\text{SMOD}} \times F_{\text{OSC}}}{64 \times (2^{10} - \text{S0REL})}$$

7.6.2. Clock source for baud rate

The on-chip RC-Oscillator frequency varies within $\pm 3\%$ after factory calibration. In case of application with higher clock precision requirement, external Crystal is usually recommended clock source.

8. Watchdog timer

The Watch Dog Timer (WDT) is an 8-bit free-running counter that generate reset signal if the counter overflows. The WDT is useful for systems which are susceptible to noise, power glitches, or electronics discharge which causing software dead loop or runaway. The WDT function can help user software recover from abnormal software condition. The WDT is different from Timer0, Timer1 of general 8052. To prevent a WDT reset can be done by software periodically clearing the WDT counter. User should check WDTF bit of WDTC register whenever un-predicted reset happened. After an external reset the watchdog timer is disabled and all registers are set to zeros.

The watchdog timer has a free running on-chip RC oscillator (250KHz ±20%). The WDT will keep on running even after the system clock has been turned off (for example, in sleep mode). During normal operation or sleep mode, a WDT time-out (if enabled) will cause the MCU to reset. The WDT can be enabled or disabled any time during the normal mode. Please refer the WDTE bit of WDTC register. The default WDT time-out period is approximately 16.38ms (WDTM [3:0] = 0100b).

The WDT has selectable divider input for the time base source clock. To select the divider input, the setting of bit3 ~ bit0 (WDTM [3:0]) of Watch Dog Timer Control Register (WDTC) should be set accordingly.

$$WDTCLK = \frac{250KHz}{2^{WDTM}}$$

$$\text{Watchdog reset time} = \frac{256}{WDTCLK}$$

Table 8.1 WDT time-out period

WDTM [3:0]	Divider (250 KHz RC oscillator in)	Time period @ 250KHz
0000	1	1.02ms
0001	2	2.05ms
0010	4	4.10ms
0011	8	8.19ms
0100	16	16.38ms (default)
0101	32	32.77ms
0110	64	65.54ms
0111	128	131.07ms
1000	256	262.14ms
1001	512	524.29ms
1010	1024	1.05s
1011	2048	2.10s
1100	4096	4.19s
1101	8192	8.39s
1110	16384	16.78s
1111	32768	33.55s

When MCU is reset, the MCU will be read WDTE control bit status. When WDTE bit is set to 1, the watchdog function will be disabled no matter what the WDTE bit status is. When WDTE bit is clear to 0, the watchdog function will be enabled if WDTE bit is set to 1 by program. User can to set WDTE on the writer or ISP.

The program can enable the WDT function by programming 1 to the WDTE bit premise that WDTE control bit is clear to 0. After WDTE set to 1, the 8 bit-counter starts to count with the selected time base source clock which set by WDTM [3:0]. It will generate a reset signal when overflows. The WDTE bit will be cleared to 0 automatically when MCU been reset, either hardware reset or WDT reset.

Once the watchdog is started it cannot be stopped. User can refreshed the watchdog timer to zero by writing 0x55 to

Watch Dog Timer refresh Key (WDTK) register. This will clear the content of the 8-bit counter and let the counter re-start to count from the beginning. The watchdog timer must be refreshed regularly to prevent reset request signal from becoming active.

When Watchdog timer is overflow, the WDTF flag will set to one and automatically reset MCU. The WDTF flag can be clear by software or external reset or power on reset.

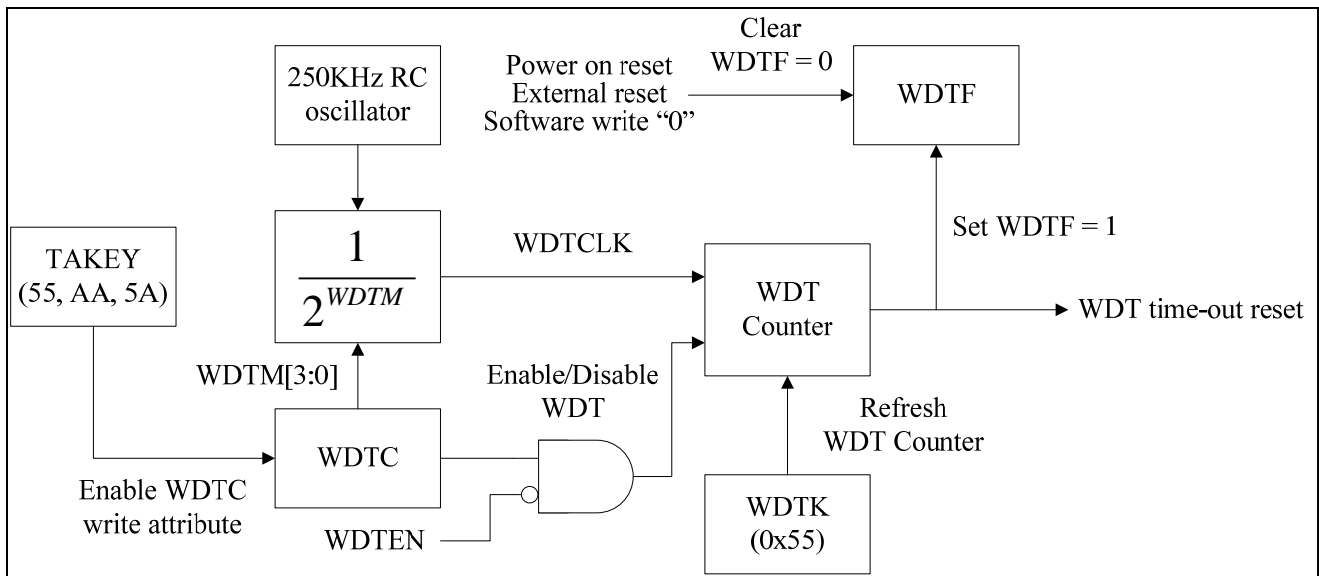


Fig. 8-1: Watchdog timer block diagram

Mnemonic	Description	Direct	Bit 7	Bit 6	Bit 5	Bit 4	Bit 3	Bit 2	Bit 1	Bit 0	RESET	
Watchdog Timer												
TAKEY	Time Access Key register	F7h	TAKEY [7:0]									00H
WDC	Watchdog timer control register	B6h	WDTF	-	WDTE	-	WDTM [3:0]				04H	
WDTK	Watchdog timer refresh key	B7h	WDTK[7:0]									00H

Mnemonic: TAKEY							Address: F7h		
7	6	5	4	3	2	1	0	Reset	
TAKEY [7:0]									00H

Watchdog timer control register (WDC) is read-only by default; software must write three specific values 55h, AAh and 5Ah sequentially to the TAKEY register to enable the WDC write attribute. That is:

```
MOV TAKEY, #55h
MOV TAKEY, #AAh
MOV TAKEY, #5Ah
```

Mnemonic: WDC							Address: B6h		
7	6	5	4	3	2	1	0	Reset	
WDTF	-	WDTE	-	WDTM [3:0]					04H

WDTF: Watchdog timer reset flag.

When MCU is reset by watchdog, WDTF flag will be set to one by hardware. This flag clear by software or external reset or power on reset.

WDTE: Control bit used to enable Watchdog timer.

Specifications subject to change without notice contact your sales representatives for the most recent information.

The WDTE bit can be used only if WDTEN is "0". If the WDTEN bit is "0", then WDT can be disabled / enabled by the WDTE bit.

0: Disable WDT.

1: Enable WDT.

The WDTE bit is not used if WDTEN is "1". That is, if the WDTEN bit is "1", WDT is always disabled no matter what the WDTE bit status is. The WDTE bit can be read and written.

WDTM [3:0]: WDT clock source divider bit. Please see table 8.1 to reference the WDT time-out period.

Mnemonic: WDTK							Address: B7h	
7	6	5	4	3	2	1	0	Reset
WDTK[7:0]								00h

WDTK: Watchdog timer refresh key.

A programmer must write 0x55 into WDTK register, and then the watchdog timer will be cleared to zero.

For example, if enable WDT and select time-out reset period is 327.68ms.

First, programming the information block OP3 bit7 WDTEN to "0".

Secondly,

MOV TAKEY, #55h

MOV TAKEY, #AAh

MOV TAKEY, #5Ah

MOV WDTC, #28h

; enable WDTC write attribute.

; Set WDTM [3:0] = 1000b. Set WDTE =1 to enable WDT

; function.

.

.

.

MOV WDTK, #55h

; Clear WDT timer to 0.

9. Interrupt

The SM39R4051 provides 7 interrupt sources with four priority levels. Each source has its own request flag(s) located in a special function register. Each interrupt requested by the corresponding flag could individually be enabled or disabled by the enable bits in SFR's IEN0, and IEN1.

When the interrupt occurs, the engine will vector to the predetermined address as shown in Table 9.1. Once interrupt service has begun, it can be interrupted only by a higher priority interrupt. The interrupt service is terminated by a return from instruction RETI. When an RETI is performed, the processor will return to the instruction that would have been next when interrupt occurred.

When the interrupt condition occurs, the processor will also indicate this by setting a flag bit. This bit is set regardless of whether the interrupt is enabled or disabled. Each interrupt flag is sampled once per machine cycle, and then samples are polled by hardware. If the sample indicates a pending interrupt when the interrupt is enabled, then interrupt request flag is set. On the next instruction cycle the interrupt will be acknowledged by hardware forcing an LCALL to appropriate vector address.

Interrupt response will require a varying amount of time depending on the state of microcontroller when the interrupt occurs. If microcontroller is performing an interrupt service with equal or greater priority, the new interrupt will not be invoked. In other cases, the response time depends on current instruction. The fastest possible response to an interrupt is 7 machine cycles. This includes one machine cycle for detecting the interrupt and six cycles for perform the LCALL.

Table 9-1: Interrupt vectors

Interrupt Request Flags	Interrupt Vector Address	Interrupt Number *(use Keil C Tool)
IE0 – External interrupt 0	0003h	0
TF0 – Timer 0 interrupt	000Bh	1
IE1 – External interrupt 1	0013h	2
TF1 – Timer 1 interrupt	001Bh	3
RI0/TI0 – Serial channel 0 interrupt	0023h	4
LVIIIF – Low Voltage Interrupt	0063h	12
IICIF – IIC interrupt	006Bh	13

*See Keil C about C51 User's Guide about Interrupt Function description

Mnemonic	Description	Direct	Bit 7	Bit 6	Bit 5	Bit 4	Bit 3	Bit 2	Bit 1	Bit 0	RESET
Interrupt											
AUX	Auxiliary register	91h	BRGS	-	-	PTS[1:0]		PINTS[1:0]		DPS	00H
IEN0	Interrupt Enable 0 register	A8H	EA	-	-	ES0	ET1	EX1	ET0	EX0	00H
IEN1	Interrupt Enable 1 register	B8H	-	-	IEIIC	IELVI	-	-	-	-	00H
IRCON	Interrupt request register	C0H	-	-	IICIF	LVIIIF	-	-	-	-	00H
IP0	Interrupt priority level 0	A9h	-	-	IP0.5	IP0.4	IP0.3	IP0.2	IP0.1	IP0.0	00h
IP1	Interrupt priority level 1	B9h	-	-	IP1.5	IP1.4	IP1.3	IP1.2	IP1.1	IP1.0	00h

Mnemonic: AUX							Address: 91h	
7	6	5	4	3	2	1	0	Reset
BRGS	-	-	PTS[1:0]		PINTS[1:0]		DPS	00H

The INTO、INT1 signal can be configured to other I/O。

Package = 20 Pin		
PINTS [1:0]	INT0	INT1
0x00	P3.2	P3.3
0x01	P3.0	P3.1
0x10	P1.4	P1.5
0x11	P3.2	P3.3

Interrupt Enable 0 register(IEN0)

Mnemonic: IEN0							Address: A8h	
7	6	5	4	3	2	1	0	Reset
EA	-	-	ES0	ET1	EX1	ET0	EX0	00h

EA: EA=0 – Disable all interrupt.
EA=1 – Enable all interrupt.

ES0: ES0=0 – Disable Serial channel 0 interrupt.
ES0=1 – Enable Serial channel 0 interrupt.

ET1: ET1=0 – Disable Timer 1 overflow interrupt.
ET1=1 – Enable Timer 1 overflow interrupt.

EX1: EX1=0 – Disable external interrupt 1.
EX1=1 – Enable external interrupt 1.

ET0: ET0=0 – Disable Timer 0 overflow interrupt.
ET0=1 – Enable Timer 0 overflow interrupt.

EX0: EX0=0 – Disable external interrupt 0.
EX0=1 – Enable external interrupt 0.

Interrupt Enable 1 register(IEN1)

Mnemonic: IEN1							Address: B8h	
7	6	5	4	3	2	1	0	Reset
-	-	IEIIC	IELVI	-	-	-	-	00h

IEIIC: IIC interrupt enable.
IEIICS = 0 – Disable IIC interrupt.
IEIICS = 1 – Enable IIC interrupt.

IELVI: LVI interrupt enable.
IELVI = 0 – Disable LVI interrupt.
IELVI = 1 – Enable LVI interrupt.

Interrupt request register(IRCON)

Mnemonic: IRCON							Address: C0h	
7	6	5	4	3	2	1	0	Reset
-	-	IICIF	LVIIF	-	-	-	-	00H

IICIF: IIC interrupt flag.
LVIIF: LVI interrupt flag.

9.1. Priority level structure

All interrupt sources are combined in groups:

Table 9-2: Priority level groups

Groups-	
External interrupt 0	
Timer 0 interrupt	-
External interrupt 1	-
Timer 1 interrupt	-
Serial channel 0 interrupt	LVI interrupt
-	IIC interrupt

Each group of interrupt sources can be programmed individually to one of four priority levels by setting or clearing one bit in the special function register ip0 and one in ip1. If requests of the same priority level will be received simultaneously, an internal polling sequence determines which request is serviced first.

Mnemonic: IP0								Address: A9h	
7	6	5	4	3	2	1	0	Reset	
-	-	IP0.5	IP0.4	IP0.3	IP0.2	IP0.1	IP0.0	00h	

Mnemonic: IP1								Address: B9h	
7	6	5	4	3	2	1	0	Reset	
-	-	IP1.5	IP1.4	IP1.3	IP1.2	IP1.1	IP1.0	00h	

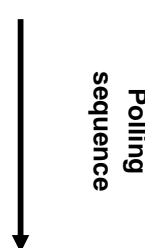
Table 9-3: Priority levels

IP1.x	IP0.x	Priority Level
0	0	Level0 (lowest)
0	1	Level1
1	0	Level2
1	1	Level3 (highest)

Table 9-4: Groups of priority

Bit	Group	
IP1.0, IP0.0	External interrupt 0	-
IP1.1, IP0.1	Timer 0 interrupt	-
IP1.2, IP0.2	External interrupt 1	-
IP1.3, IP0.3	Timer 1 interrupt	-
IP1.4, IP0.4	Serial channel 0 interrupt	LVI interrupt
IP1.5, IP0.5	-	IIC interrupt

Table 9-5: Polling sequence

Interrupt source	Sequence
External interrupt 0	
Timer 0 interrupt	
External interrupt 1	
Timer 1 interrupt	
Serial channel 0 interrupt	
LVI interrupt	
IIC interrupt	

10. Power Management Unit

Power management unit serves two power management modes, IDLE and STOP, for the users to do power saving function.

Mnemonic: PCON							Address: 87h	
7	6	5	4	3	2	1	0	Reset
SMOD	-	-	-	-	-	STOP	IDLE	40h

STOP: Stop mode control bit. Setting this bit turning on the Stop Mode.

Stop bit is always read as 0

IDLE: Idle mode control bit. Setting this bit turning on the Idle Mode.

Idle bit is always read as 0

10.1. Idle mode

Setting the IDLE bit of PCON register invokes the IDLE mode. The IDLE mode leaves internal clocks and peripherals running. Power consumption drops because the CPU is not active. The CPU can exit the IDLE state with any interrupts or a reset.

10.2. Stop mode

Setting the STOP bit of PCON register invokes the STOP mode. All internal clocking in this mode is turn off. The CPU will exit this state only if interrupts asserted from external INT0/1 and LVI or hardware reset by WDT and LVR.

11. IIC function

The IIC module uses the SCL (clock) and the SDA (data) line to communicate with external IIC interface. Its speed can be selected to 400Kbps (maximum) by software setting the IICBR [2:0] control bit. The IIC module provided 2 interrupts (RXIF, TXIF). It will generate START, repeated START and STOP signals automatically in master mode and can detect START, repeated START and STOP signals in slave mode. The maximum communication length and the number of devices that can be connected are limited by a maximum bus capacitance of 400pF.

The interrupt vector is 6Bh.

Mnemonic	Description	Direct	Bit 7	Bit 6	Bit 5	Bit 4	Bit 3	Bit 2	Bit 1	Bit 0	RESET
IIC function											
IICCTL	IIC control register	F9h	IICEN	MSS	MAS	AB_EN	BF_EN	IICBR[2:0]			04H
IICS	IIC status register	F8h	-	MPIF	LAIF	RXIF	TXIF	RXAK	TXAK	RW,B B	00H
IICA1	IIC Address 1 register	FAh	IICA1[7:1]							MATCH1 or RW1	A0H
IICA2	IIC Address 2 register	FBh	IICA2[7:1]							MATCH2 or RW2	60H
IICRWD	IIC Read/Write register	FCh	IICRWD[7:0]								00H
IICEBT	IIC Enable Bus Transaction	FDh	FU_EN		-						00H

Mnemonic: IICCTL							Address: F9h	
7	6	5	4	3	2	1	0	Reset
IICEN	MSS	MAS	AB_EN	BF_EN	IICBR[2:0]			04h

IICEN: Enable IIC module

IICEN = 1 is Enable

IICEN = 0 is Disable.

MSS: Master or slave mode select.

MSS = 1 is master mode.

MSS = 0 is slave mode.

*The software must set this bit before setting others register.

MAS: Master address select (master mode only)

MAS = 0 is to use IICA1.

MAS = 1 is to use IICA2.

AB_EN: Arbitration lost enable bit. (Master mode only)

If set AB_EN bit, the hardware will check arbitration lost. Once arbitration lost occurred, hardware will return to IDLE state. If this bit is cleared, hardware will not care arbitration lost condition. Set this bit when multi-master and slave connection. Clear this bit when single master to single slave.

BF_EN: Bus busy enable bit. (Master mode only)

If set BF_EN bit, hardware will not generate a start condition to bus until BF=0. Clear this bit will always generate a start condition to bus when MStart is set. Set this bit when multi-master and slave connection. Clear this bit when single master to single slave.

IICBR[2:0]: Baud rate selection (master mode only), where Fosc is the external crystal or oscillator frequency. The default is Fosc/512 for users' convenience.

IICBR[2:0]	Baud rate
000	Fosc/32
001	Fosc/64
010	Fosc/128

Specifications subject to change without notice contact your sales representatives for the most recent information.

011	Fosc/256
100	Fosc/512
101	Fosc/1024
110	Fosc/2048
111	Fosc/4096

Mnemonic: IICS							Address: F8H	
7	6	5	4	3	2	1	0	Reset
-	MPIF	LAIF	RXIF	TXIF	RXAK	TxAk	RW	00H

- MPIF:** The Stop condition Interrupt Flag
The stop condition occurred and this bit will be set. Software need to clear this bit
- LAIF:** Arbitration lost bit. (Master mode only)
The Arbitration Interrupt Flag, the bus arbitration lost occurred and this bit will be set. Software need to clear this bit
- RxIF:** The data Receive Interrupt Flag (RXIF) is set after the IICRWD (IIC Read Write Data Buffer) is loaded with a newly receive data.
- TxIF:** The data Transmit Interrupt Flag (TXIF) is set when the data of the IICRWD (IIC Read Write Data Buffer) is downloaded to the shift register.
- RxAK:** The Acknowledge Status indicate bit. When clear, it means an acknowledge signal has been received after the complete 8 bits data transmit on the bus.
- TxAk:** The Acknowledge status transmit bit. When received complete 8 bits data, this bit will set (NoAck) or clear (Ack) and transmit to master to indicate the receive status.
- RW: Master Mode:**
Bus busy bit
If detect scl=0 or sda=0 or bus start, this bit will be set. If detect stop,this bit will be cleared. This bit can be cleared by software to return ready state.
- Slave Mode:**
The slave mode read (received) or wrote (transmit) on the IIC bus. When this bit is clear, the slave module received data on the IIC bus (SDA).(Slave mode only)

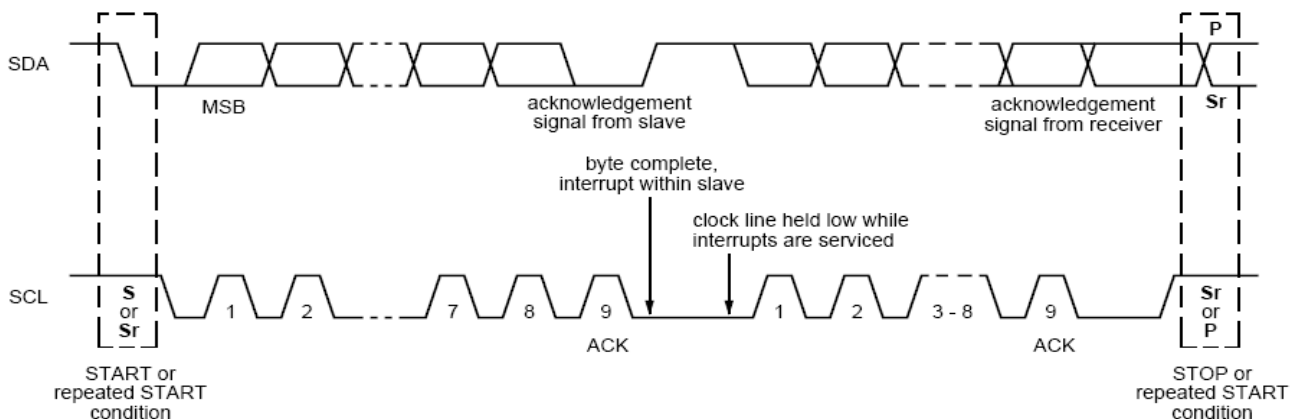


Fig. 11-1: Acknowledgement bit in the 9th bit of a byte transmission

Mnemonic: IICA1							Address: FAH	
7	6	5	4	3	2	1	0	Reset
IICA1[7:1]							Match1 or RW1	A0H
R/W							R or R/W	

Slave mode:
 IICA1[7:1]: IIC Address registers
 This is the first 7-bit address for this slave module. It will be checked when an address (from

master) is received

Match1: When IICA1 matches with the received address from the master side, this bit will set to 1 by hardware. When IIC bus gets or send first data, this bit will clear automatically.

Master mode:

IICA1[7:1]: IIC Address registers

This 7-bit address indicates the slave with which it wants to communicate.

RW1: This bit will be sent out as RW of the slave side if the module has set the MStart or RStart bit. It appears at the 8th bit after the IIC address as shown in Fig. 14-2. It is used to tell the salve the direction of the following communication. If it is 1, the module is in master receive mode. If 0, the module is in master transmit mode.

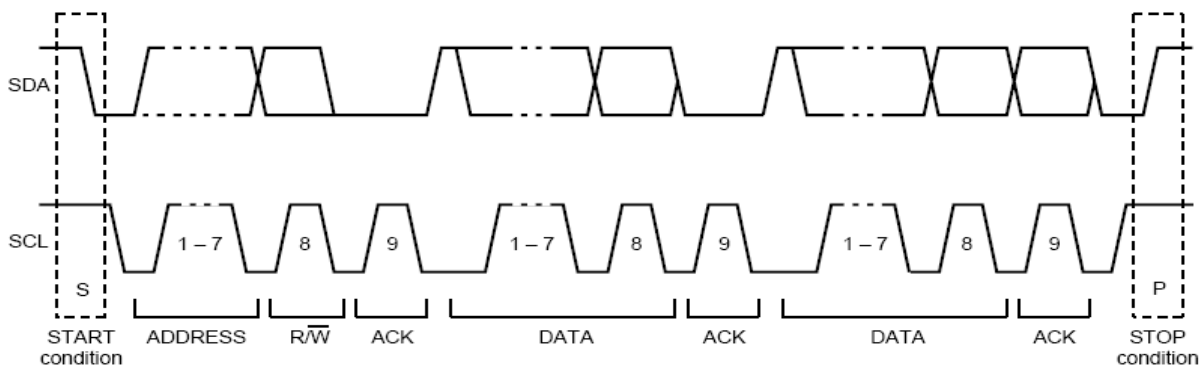


Fig. 11-2: RW bit in the 8th bit after IIC address

Mnemonic: IICA2							Address: FBh	
7	6	5	4	3	2	1	0	Reset
IICA2[7:1]							Match2 or RW2	60h
R/W							R or R/W	

Slave mode:

IICA2[7:1]: IIC Address registers

This is the second 7-bit address for this slave module.

It will be checked when an address (from master) is received

Match2: When IICA2 matches with the received address from the master side, this bit will set to 1 by hardware. When IIC bus gets or send first data, this bit will clear automatically.

Master mode:

IICA2[7:1]: IIC Address registers

This 7-bit address indicates the slave with which it wants to communicate.

RW2: This bit will be sent out as RW of the slave side if the module has set the MStart or RStart bit. It is used to tell the salve the direction of the following communication. If it is 1, the module is in master receive mode. If 0, the module is in master transmit mode.

Mnemonic: IICRWD							Address: FCh	
7	6	5	4	3	2	1	0	Reset
IICRWD[7:0]								00h

IICRWD[7:0]: IIC read write data buffer.

In receiving (read) mode, the received byte is stored here.

In transmitting mode, the byte to be shifted out through SDA stays here.

Mnemonic: IICEBT							Address: FDH	
7	6	5	4	3	2	1	0	Reset
FU_EN	-	-	-	-	-	-	-	00H

Master Mode :

- 00: reserved
- 01: IIC bus module will enable read/write data transfer on SDA and SCL.
- 10: IIC bus module generate a start condition on the SDA/SCL, then send out address which is stored in the IICA1/IICA2(selected by MAS control bit)
- 11: IIC bus module generate a stop condition on the SDA/SCL.

Slave mode:

- 01: FU_EN[7:6] should be set as 01 only. The other value is inhibited.

Notice:

1. FU_EN[7:6] should be set as 01 before read/write data transfer for bus release; otherwise, SCL will be locked(pull low).
2. FU_EN[7:6] should be set as 01 after read/write data transfer for receiving a stop condition from bus master.
3. In transmit data mode(slave mode), the output data should be filled into IICRWD before setting FU_EN[7:6] as 01.
4. FU_EN[7:6] will be auto-clear by hardware, so setting FU_EN[7:6] repeatedly is necessary.

12. LVI – Low Voltage Interrupt

The interrupt vector 63h.

Mnemonic: LVC							Address: E6h	
7	6	5	4	3	2	1	0	Reset
LVI_EN	LVI_VS	LVRXE	LVSIF	-	-	EPSIF	-	20H

LVI_EN: Low voltage interrupt function enable bit.

0: disable low voltage detect function.

1: enable low voltage detect function.

LVI_VS: Low Voltage Interrupt level Selection

0 :The level of voltage is set at Low-level

1 :The level of voltage is set at Hi-Level

LVRXE: External low voltage reset function enable bit.

0: disable external low voltage reset function.

1: enable external low voltage reset function.

LVSIF Low Voltage Status Flag

1:the VDD voltage under LVI voltage

0:the VDD voltage above LVI voltage

EPSIF MCU External Voltage Status Flag

1: means less than 3.8V(external power)

0: means more than 3.9V(external power)

Hi-level :

Symbol	Parameter	Min	Typ	Max	Units
V_{LVI}	Low Voltage Interrupt Voltage Level	3.4	3.7	4.0	V
V_{LVR}	Low Voltage Reset Voltage Level	3.2	3.5	3.8	V

Notes: The V_{LVI} always above V_{LVR} about 0.2V.

Low-level :

Symbol	Parameter	Min	Typ	Max	Units
V_{LVI}	Low Voltage Interrupt Voltage Level	2.1	2.3	2.5	V
V_{LVR}	Low Voltage Reset Voltage Level	1.9	2.1	2.3	V

Notes: The V_{LVI} always above V_{LVR} about 0.2V.

13. In-System Programming (Internal ISP)

The SM39R4051 can generate flash control signal by internal hardware circuit. Users utilize flash control register, flash address register and flash data register to perform the ISP function without removing the SM39R4051 from the system. The SM39R4051 provides internal flash control signals which can do flash program/chip erase/page erase/protect functions. User need to design and use any kind of interface which SM39R4051 can input data. User then utilize ISP service program to perform the flash program/chip erase/page erase/protect functions.

13.1. ISP service program

The ISP service program is a user developed firmware program which resides in the ISP service program space. After user developed the ISP service program, user then determine the size of the ISP service program. User need to program the ISP service program in the SM39R4051 for the ISP purpose.

The ISP service programs were developed by user so that it should includes any features which relates to the flash memory programming function as well as communication protocol between SM39R4051 and host device which output data to the SM39R4051. For example, if user utilize UART interface to receive/transmit data between SM39R4051 and host device, the ISP service program should include baud rate, checksum or parity check or any error-checking mechanism to avoid data transmission error.

The ISP service program can be initiated under SM39R4051 active or idle mode. It can not be initiated under power down mode.

13.2. Lock Bit (N)

The Lock Bit N has two functions: one is for service program size configuration and the other is to lock the ISP service program space from flash erase function.

The ISP service program space address range \$C00 to \$FFF. It can be divided as blocks of N*256 byte. (N=0 to 4). When N=0 means no ISP function, all of 4K byte flash memory can be used as program memory. When N=1 means ISP service program occupies 256 byte while the rest of 3.75K byte flash memory can be used as program memory. The maximum ISP service program allowed is 1K byte when N=4. Under such configuration, the usable program memory space is 3K byte.

After N determined, SM39R4051 will reserve the ISP service program space downward from the top of the program address \$FFF. The start address of the ISP service program located at \$0C00. Please see section 3.1 program memory diagram for this ISP service program space structure.

The lock bit N function is different from the flash protect function. The flash erase function can erase all of the flash memory except for the locked ISP service program space. If the flash not has been protected, the content of ISP service program still can be read. If the flash has been protected, the overall content of flash program memory space including ISP service program space can not be read.

Table 13.1 ISP code area.

N	ISP service program address
0	No ISP service program
1	256 bytes (\$F00h ~ \$FFFh)
2	512 bytes (\$E00h ~ \$FFFh)
3	768 bytes (\$D00h ~ \$FFFh)
4	1.0 K bytes (\$C00h ~ \$FFFh)

ISP service program configurable in N*256 byte (N= 0 ~ 4)

13.3. Program the ISP Service Program

After Lock Bit N is set and ISP service program been programmed, the ISP service program memory will be protected (locked) automatically. The lock bit N has its own program/erase timing. It is different from the flash memory program/erase timing so the locked ISP service program can not be erased by flash erase function. If user needs to erase the locked ISP service program, he can do it by writer only. User can not change ISP service program when SM39R4051 was in system.

13.4. Initiate ISP Service Program

To initiate the ISP service program is to load the program counter (PC) with start address of ISP service program and execute it. There are four ways to do so:

- (1) Blank reset. Hardware reset with first flash address blank (\$0000=#FFH) will load the PC with start address of ISP service program. The hardware reset includes MAX810 (power on reset) and external pad reset. The hardware will issue a strobe window about 256us after hardware reset.
- (2) Execute jump instruction can load the start address of the ISP service program to PC.
- (3) Enter's ISP service program by hardware setting. User can force SM39R4051 enter ISP service program by setting P1.5, "active low" during hardware reset period. The hardware reset includes MAX810 (power on reset) and external pad reset. The hardware will issue a strobe window about 256us after hardware reset. In application system design, user should take care of the setting of P1.5, at reset period to prevent SM39R4051 from entering ISP service program.
- (4) Enter's ISP service program by hardware setting, the P3.0 will be detected the two clock signals during hardware reset period. The hardware reset includes MAX810 (power on reset) and external pad reset. The hardware will issue a 256us strobe window to detect 2 clock signals after hardware reset.

During the strobe window, the hardware will detect the status of P1.5 and P3.0. If they meet one of above conditions, chip will switch to ISP mode automatically. After ISP service program executed, user need to reset the SM39R4051, either by hardware reset or by WDT, or jump to the address \$0000 to re-start the firmware program.

There are 6 kinds of entry mechanisms for user different applications. This entry method will select on the writer or ISP.

- (1) First Address Blank. i.e. \$0000 = 0xFF. And triggered by Internal reset signal.
- (2) First Address Blank. i.e. \$0000 = 0xFF. And triggered by PAD reset signal.
- (3) P1.5=0. And triggered by Internal reset signal.
- (4) P1.5=0. And triggered by PAD reset signal.
- (5) P3.0 input 2 clocks. And triggered by Internal reset signal.
- (6) P3.0 input 2 clocks. And triggered by PAD reset signal.

13.5. ISP register – TAKEY, IFCON, ISPFAH, ISPFAL, ISPFD and ISPFC

Mnemonic	Description	Direct	Bit 7	Bit 6	Bit 5	Bit 4	Bit 3	Bit 2	Bit 1	Bit 0	RESET
ISP function											
TAKEY	Time Access Key register	F7h	TAKEY [7:0]								00H
IFCON	Interface Control register	8Fh	-	CDPR	-	-	-	-	-	ISPE	00H
ISPFAH	ISP Flash Address - High register	E1h	-				ISPFAH [3:0]				FFH
ISPFAL	ISP Flash Address - Low register	E2h	ISPFAL [7:0]								FFH
ISPFD	ISP Flash Data register	E3h	ISPFD [7:0]								FFH

ISPFC	ISP Flash Control register	E4h	EMF1	EMF2	EMF3	EMF4	-	ISPF.2	ISPF.1	ISPF.0	00H
-------	----------------------------	-----	------	------	------	------	---	--------	--------	--------	-----

Mnemonic: TAKEY

Address: F7H

7	6	5	4	3	2	1	0	Reset
TAKEY [7:0]								00H

ISP enable bit (ISPE) is read-only by default, software must write three specific values 55h, AAh and 5Ah sequentially to the TAKEY register to enable the ISPE bit write attribute. That is:

```
MOV TAKEY, #55h
MOV TAKEY, #AAh
MOV TAKEY, #5Ah
```

Mnemonic: IFCON

Address: 8FH

7	6	5	4	3	2	1	0	Reset
-	CDPR	-	-	-	-	-	ISPE	00H

The bit 0 (ISPE) of IFCON is ISP enable bit. User can enable overall SM39R4051 ISP function by setting ISPE bit to 1, to disable overall ISP function by set ISPE to 0. The function of ISPE behaves like a security key. User can disable overall ISP function to prevent software program be erased accidentally. ISP registers ISPF AH, ISPFAL, ISPF D and ISPF C are read-only by default. Software must be set ISPE bit to 1 to enable these 4 registers write attribute.

Mnemonic: ISPF AH

Address: E1H

7	6	5	4	3	2	1	0	Reset
-	-	-	-	ISPF AH3	ISPF AH2	ISPF AH1	ISPF AH0	FFH

ISPF AH [3:0]: Flash address-high for ISP function

Mnemonic: ISPF AL

Address: E2H

7	6	5	4	3	2	1	0	Reset
ISPF AL7	ISPF AL6	ISPF AL5	ISPF AL4	ISPF AL3	ISPF AL2	ISPF AL1	ISPF AL0	FFH

ISPF AL [7:0]: Flash address-Low for ISP function

The ISPF AH & ISPF AL provide the 12-bit flash memory address for ISP function. The flash memory address should not include the ISP service program space address. If the flash memory address indicated by ISPF AH & ISPF AL registers overlay with the ISP service program space address, the flash program/page erase of ISP function executed thereafter will have no effect.

Mnemonic: ISPF D

Address: E3H

7	6	5	4	3	2	1	0	Reset
ISPF D7	ISPF D6	ISPF D5	ISPF D4	ISPF D3	ISPF D2	ISPF D1	ISPF D0	FFH

ISPF D [7:0]: Flash data for ISP function.

The ISPF D provide the 8-bit data register for ISP function.

Mnemonic: ISPF C

Address: E4H

7	6	5	4	3	2	1	0	Reset
EMF1	EMF2	EMF3	EMF4	-	ISPF [2]	ISPF [1]	ISPF [0]	00H

EMF1: Entry mechanism (1) flag, clear by reset. (Read only)
EMF2: Entry mechanism (2) flag, clear by reset. (Read only)
EMF3: Entry mechanism (3) flag, clear by reset. (Read only)

EMF4: Entry mechanism (4) flag, clear by reset. (Read only)
ISPF [2:0]: ISP function select bit.

ISPF[2:0]	ISP function
000	Byte program
001	Chip protect
010	Page erase
011	Chip erase
100	Write option
101	Read option
110	Erase option
111	Finish Flag

One page of flash memory is 256 byte

The Option function can access the XTAL1 and XTAL2 configured to I/O pins select(description in section 1.2) 、 Internal reset time select(description in section 1.4.1) 、 clock source select(description in section 1.5) 、 Reset configured to I/O pins function select(description in section 5) 、 WD TEN control bit(description in section 8) 、 or ISP entry mechanisms select(description in section 13) 。
When chip protected or no ISP service, option can only read.

The choice ISP function will start to execute once the software write data to ISPFC register.

To perform byte program/page erases ISP function, user need to specify flash address at first. When performing page erase function, SM39R4051 will erase entire page which flash address indicated by ISPF AH & ISPFAL registers located within the page.

e.g. flash address: \$YMN

page erase function will erase from \$Y00 to \$YFF

To perform the chip erase ISP function, SM39R4051 will erase all the flash program memory except the ISP service program space. To perform chip protect ISP function, the SM39R4051 flash memory content will be read #00H.

e.g. ISP service program to do the byte program - to program #22H to the address \$0105H

```
MOV TAKEY, #55h
MOV TAKEY, #AAh
MOV TAKEY, #5Ah           ; enable ISPE write attribute
MOV IFCON, #01H          ; enable SM39R4051 ISP function
MOV ISPF AH, #01H         ; set flash address-high, 01H
MOV ISPFAL, #05H         ; set flash address-low, 05H
MOV ISPF D, #22H         ; set flash data to be programmed, data = 22H
MOV ISPF C, #00H         ; start to program #22H to the flash address $0105H
```

Operating Conditions

Symbol	Description	Min.	Typ.	Max.	Unit.	Remarks
TA	Operating temperature	-40	25	85	°C	Ambient temperature under bias
V _{CC}	Supply voltage	2.7		5.5	V	23MHz(Max)
V _{CC}	Supply voltage	3.0		5.5	V	25MHz(Max)

DC Characteristics

T_A = -40°C to 85°C, V_{CC} = 5.0V

Symbol	Parameter	Valid	Min	Max	Units	Conditions
VIL1	Input Low-voltage	Port 1,3,4	-0.5	0.8	V	V _{CC} =5V
VIL2	Input Low-voltage	RES, XTAL1	0	0.8	V	
VIH1	Input High-voltage	Port 1,3,4	2.0	V _{CC} + 0.5	V	
VIH2	Input High-voltage	RES, XTAL1	70%V _{CC}	V _{CC} + 0.5	V	
VOL	Output Low-voltage	Port 1,3,4		0.4	V	IOL=5.0mA V _{CC} =5V
VOH1	Output High-voltage using Strong Pull-up ⁽¹⁾	Port 1,3,4	2.4		V	IOH= -16mA
VOH2	Output High-voltage using Weak Pull-up ⁽²⁾	Port 1,3,4	2.4		V	IOH= -280uA
IIL	Logic 0 Input Current	Port 1,3,4		-75	uA	Vin= 0.45V
ITL	Logical Transition Current	Port 1,3,4		-650	uA	Vin= 2.0V
ILI	Input Leakage Current	Port 1,3,4		±10	uA	0.45V<Vin<V _{CC}
RRST	Reset Pull-down Resistor	RES	50	300	kΩ	
CIO	Pin Capacitance			10	pF	Freq= 1MHz, Ta= 25°C
ICC	Power Supply Current	VDD		11	mA	Active mode, 12MHz, V _{CC} =5V, 25 °C
				10	mA	Idle mode, 12MHz, V _{CC} =5V, 25 °C
				3	uA	Power down mode V _{CC} =5V, 25 °C

- Notes:
1. Port in Push-Pull Output Mode
 2. Port in Quasi-Bidirectional Mode

$T_A = -40^{\circ}\text{C}$ to 85°C , $V_{CC} = 3.0\text{V}$

Symbol	Parameter	Valid	Min	Max	Units	Conditions
VIL1	Input Low-voltage	Port 1,3,4	-0.5	0.8	V	$V_{CC}=3.0\text{V}$
VIL2	Input Low-voltage	RES, XTAL1	0	0.8	V	
VIH1	Input High-voltage	Port 1,3,4	2.0	$V_{CC} + 0.5$	V	
VIH2	Input High-voltage	RES, XTAL1	$70\%V_{CC}$	$V_{CC} + 0.5$	V	
VOL	Output Low-voltage	Port 1,3,4		0.4	V	$I_{OL}=3.0\text{mA}$ $V_{CC}=3.0\text{V}$
VOH1	Output High-voltage using Strong Pull-up ⁽¹⁾	Port 1,3,4	2.4		V	$I_{OH} = -3.2\text{mA}$
VOH2	Output High-voltage using Weak Pull-up ⁽²⁾	Port 1,3,4	2.4		V	$I_{OH} = -55\mu\text{A}$
IIL	Logic 0 Input Current	Port 1,3,4		-75	μA	$V_{in} = 0.45\text{V}$
ITL	Logical Transition Current	Port 1,3,4		-650	μA	$V_{in} = 1.5\text{V}$
ILI	Input Leakage Current	Port 1,3,4		± 10	μA	$0.45\text{V} < V_{in} < V_{CC}$
RRST	Reset Pull-down Resistor	RES	50	300	$\text{k}\Omega$	
CIO	Pin Capacitance			10	pF	Freq= 1MHz, $T_a = 25^{\circ}\text{C}$
ICC	Power Supply Current	VDD		10	mA	Active mode, 12MHz, $V_{CC}=3.0\text{V}$, 25°C
				9	mA	Idle mode, 12MHz, $V_{CC}=3.0\text{V}$, 25°C
				2	μA	Power down mode, $V_{CC}=3.0\text{V}$, 25°C

- Notes:
1. Port in Push-Pull Output Mode
 2. Port in Quasi-Bidirectional Mode

Suggest circuit connect :

