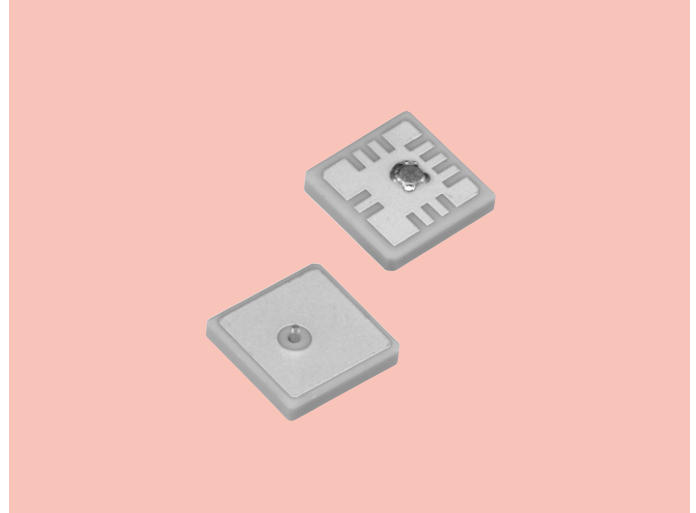


GPS Antenna ANT-JM1

OUTLINE

Antenna efficiently receives radio waves with circular polarization from GPS satellites.



FEATURES

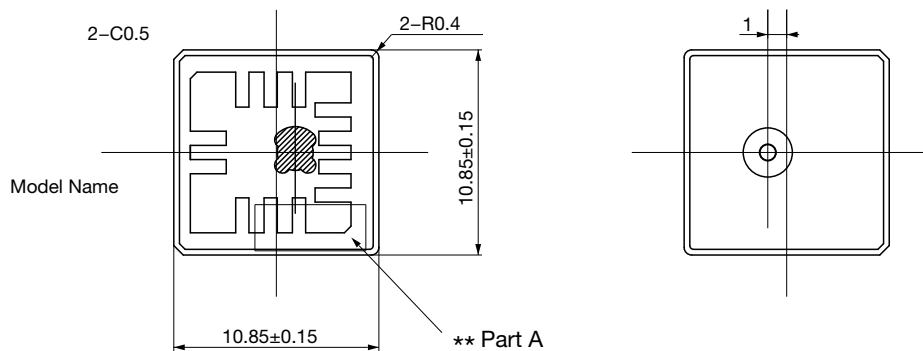
1. Small antenna element (11×11mm, thickness t=2mm).
2. Suitable for use in digital cameras and portable GPS devices which require a small size and low profile.
3. The antenna pattern can be custom designed to match the specified case.

SPECIFICATIONS

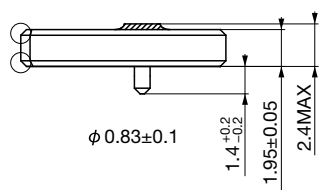
Item		Specifications
Antenna	Reception Frequency	1575.42±1.023MHz
	Reception Polarization	Right Hand Circular Polarization
	Antenna Gain	-9.5dBi *1
	Output Impedance	50Ω
Minimum Order		300,000pcs/year

*1 Conditions : 15×15 grand board.

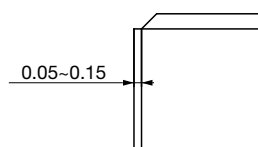
DIMENSIONS



Part B



C0.1~C0.5



Part B detail (20/1)

Note

1. Stamp the Manufacturing Date Code on part A.