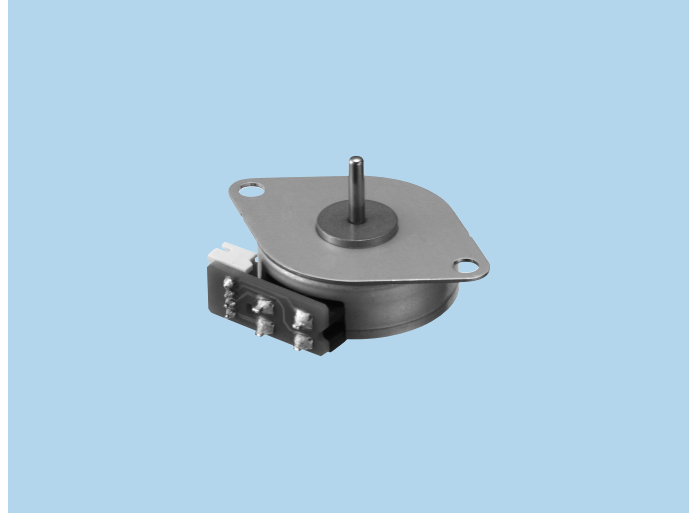


Stepping Motors

M25SP-6NK

OUTLINE

The thinnest model that realizes compact size and lightweight in $\phi 25$ series.



FEATURES

1. Compact size and high-output torque.
2. Superior running quietness and stability.

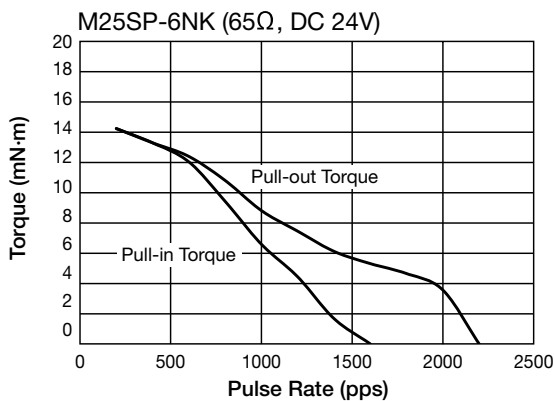
USES

Multifunction machines, scanners, etc.

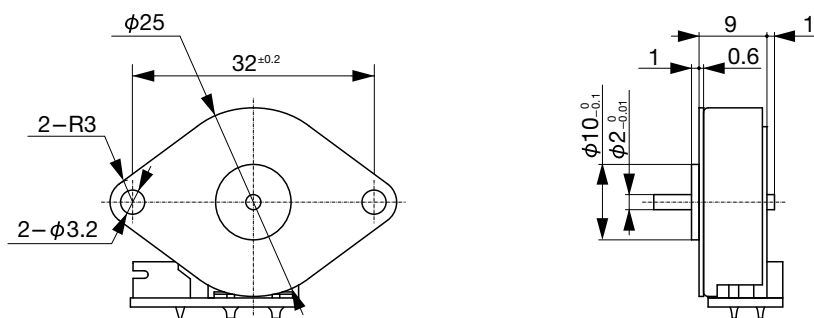
SPECIFICATIONS

| Item | M25SP-6NK |
|--------------------------|-------------------------------------------|
| Rated Voltage | DC 24V |
| Working Voltage | DC 21.6~26.4V |
| Rated Current/Phase | 250mA |
| No. of Phase | 4 Phase |
| Coil DC Resistance | 65Ω/phase±7% |
| Step Angle | 7.5°/step |
| Excitation Method | 2-2 Phase excitation (Bipolar driving) |
| Insulation Class | Class E insulation |
| Holding Torque | 16.5mN·m |
| Pull-out Torque | 13.3mN·m/400pps |
| Pull-in Torque | 13.3mN·m/400pps |
| Max. Pull-out Pulse Rate | 2,050pps |
| Max. Pull-in Pulse Rate | 1,350pps |

CHARACTERISTICS



DIMENSIONS



Unit : mm, General tolerance : ±0.5