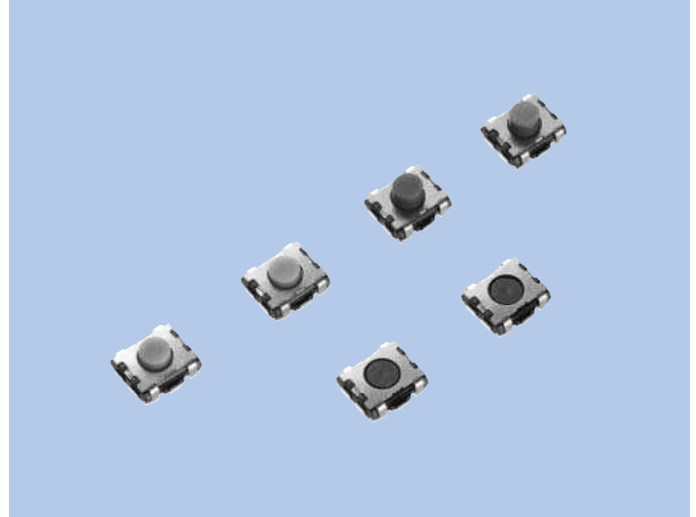


# Tactile Switches With Button SOF Series

## FEATURES

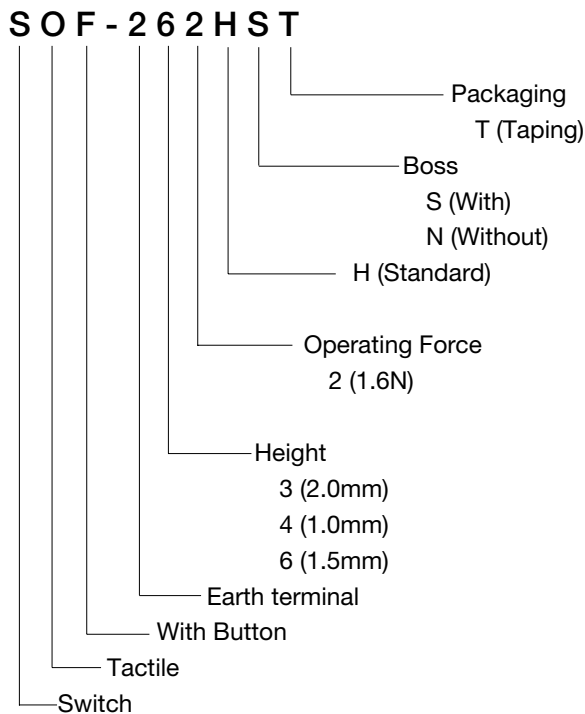
1. Minimized mounting area.
2. Using the stainless steel metal dome with long life and sharp feeling.
3. Suitable for mounting a narrow key pitch.
4. Suitable for SMT reflow soldering.



## APPLICATIONS

1. For small electronic equipment.

## MODEL NAME CODE



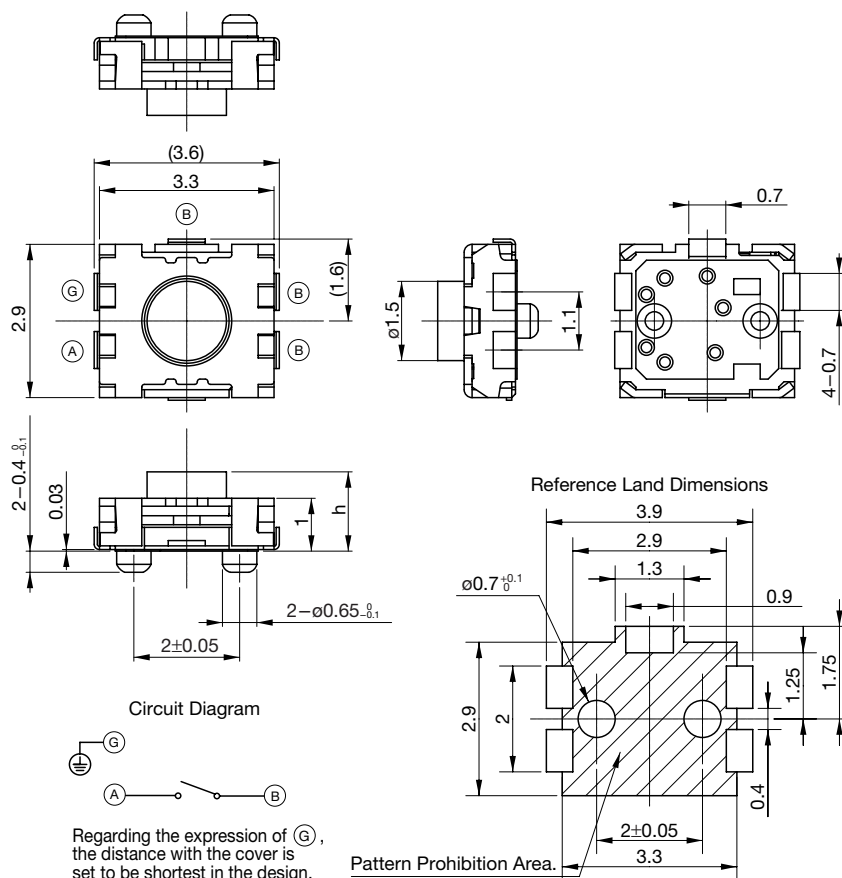
## SPECIFICATIONS

Electrical Characteristics	Rating	50mA, 12V DC
	Contact Resistance	1Ω or less
	Insulation Resistance	10MΩ or more
	Withstand Voltage	1 minute at 100V
Mechanical Characteristics	Operating Force	1.6N
	Life	100,000cycles

## TYPE

Model Name Code	Order Number	Operating Force	Boss	Mounting Height (h)	Pcs
SOF-242HST	R66 7074	1.6N	With	1.0mm	5,000
SOF-242HNT	R66 7075	1.6N	Without	1.0mm	5,000
SOF-262HST	R66 7076	1.6N	With	1.5mm	5,000
SOF-262HNT	R66 7077	1.6N	Without	1.5mm	5,000
SOF-232HST	R66 7078	1.6N	With	2.0mm	4,000
SOF-232HNT	R66 7079	1.6N	Without	2.0mm	4,000

## DIMENSIONS



Metal Mask thickness:100μm

☆ Tolerance : ±0.3mm