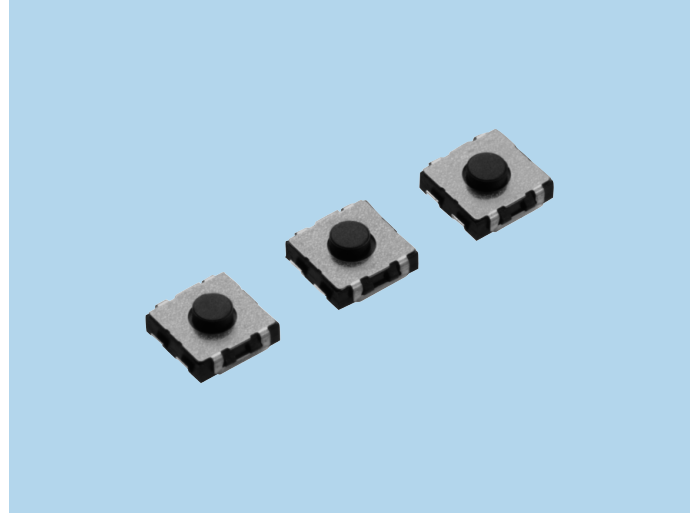


Long-Life Tactile Switches SOV Series

FEATURES

1. Long time : 1,000,000 times.
2. Stable pushing thanks to the specification of attaching a button.

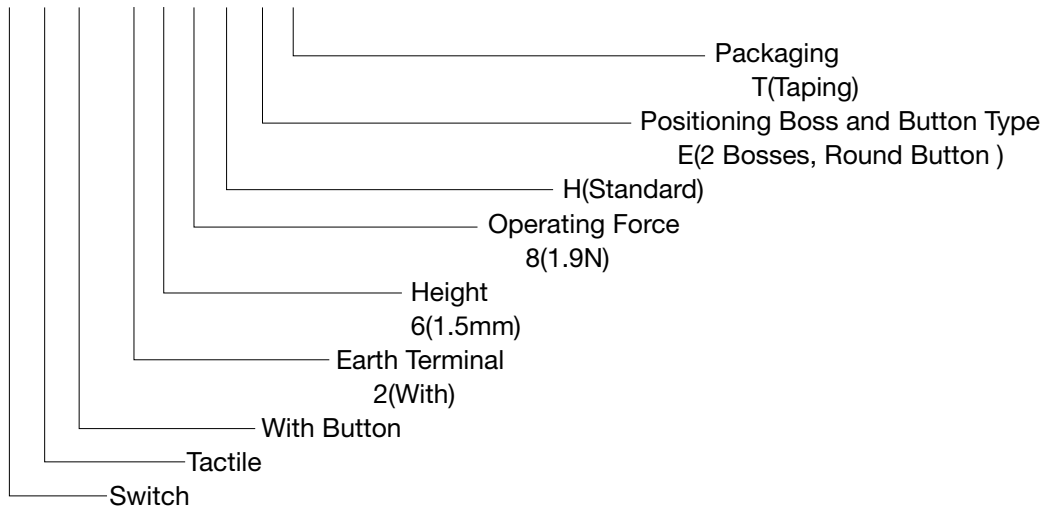


APPLICATIONS

Automotive Equipment, Mobile Phones, Smartphones, Digital Cameras, Game Machines and etc.

MODEL NAME CODE

S O V - 2 6 8 H E T



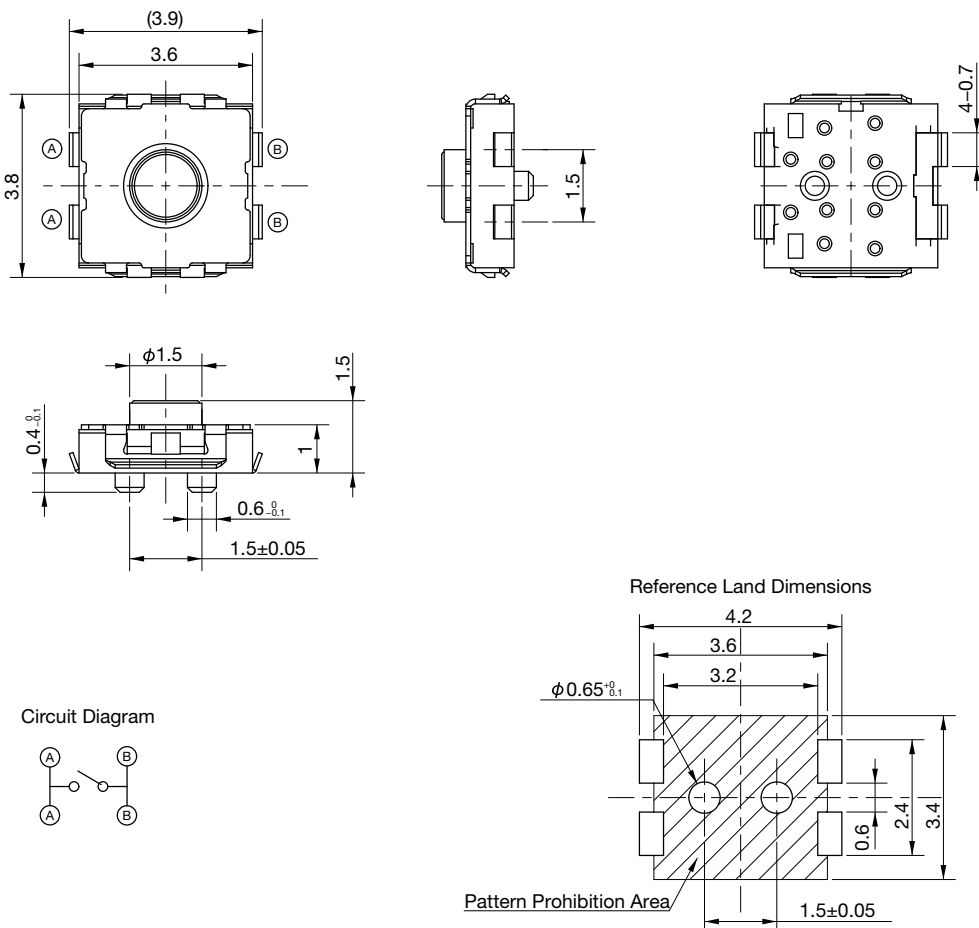
SPECIFICATIONS

Electrical Characteristics	Rating	DC12V, 50mA
	Contact Resistance	1Ω or less
	Insulation Resistance	10MΩ or more
	Withstand Voltage	1 minute at AC 100V
Life		1,000,000 times

TYPE

Model Name Code	Model Name	Operating Force	Boss, Button Type	Pcs/Reel
SOV-268HET	R 66 7327	1.9N	2 Bosses, Round Button	5,000

DIMENSIONS



Unit:mm