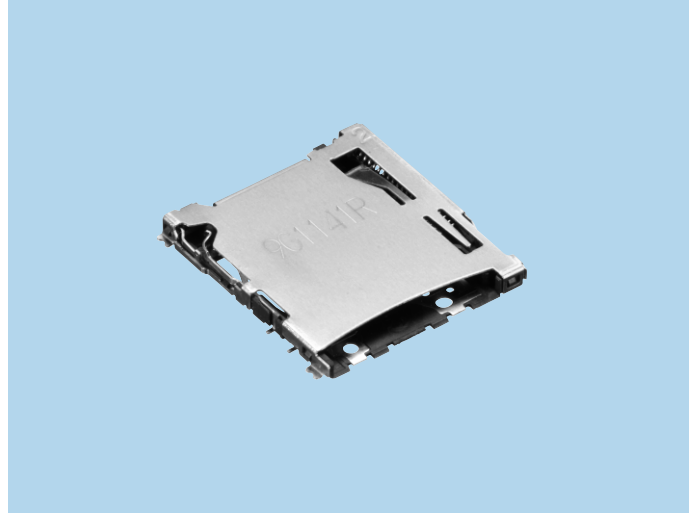


microSD Memory Card Connectors

CIM-H75N2

OUTLINE

1. Push-in Push-out ejection format
Card exposure 3.8 mm
2. Miniature, low-profile design.
Normal mount type:
Height 1.40 mm, width 13.7 mm, depth 15.3 mm
3. Includes function to prevent card popping out.
4. Built-in card detection switch
(normally open type)
5. RFID terminal included.



SPECIFICATIONS

ELECTRICAL CHARACTERISTICS

Rated Voltage	DC 10V
Rated Current	0.5A
Withstanding Voltage	500V AC (rms) 1minute
Insulation Resistance	1000MΩ min. (Initial value)
Contact Resista	100MΩ max. (Initial value)

MECHANICAL CHARACTERISTICS

Life (Matching Cycle)	10,000 times
Card Insertion Force	4.5N~7.5N
Eject Force	4.5N~7.5N
Using Temperature Range	-30~+70°C

