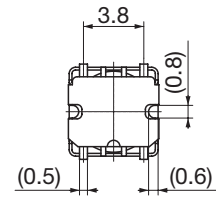
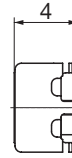
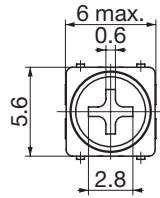


# Adjustable Coils SMD Type K Series

## K5-N2



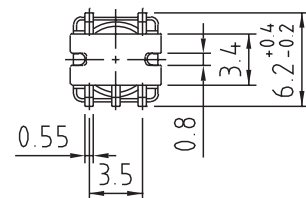
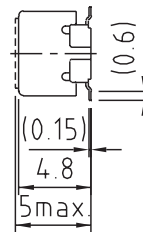
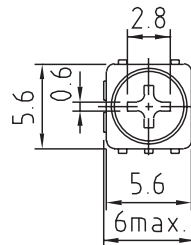
**Specifications**

- (1) 0.1~14mH
- (2) 100~500kHz
- (3) – (Exclusively for preset)
- (4) –
- (5) 10~40

**Features**

- SMD
- 1,000pcs./Reel

## K5-N1



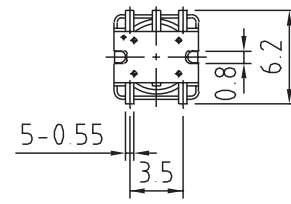
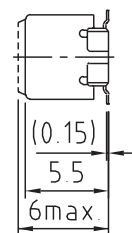
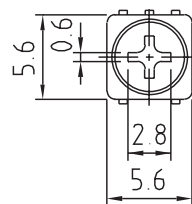
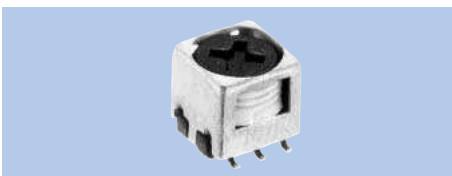
**Specifications**

- (1) 1~1,200μH
- (2) 0.1~20MHz
- (3) F:±2%  
L:±5%
- (4) 5~15,000pF×2
- (5) 50~80

**Features**

- SMD
- 1,000pcs./Reel

## K5-N



**Specifications**

- (1) 1~5,900μH
- (2) 0.1~20MHz
- (3) F:±2%  
L:±5%
- (4) 5~15,000pF×2
- (5) 50~100

**Features**

- SMD
- 1,000pcs./Reel

- (1) Inductance
- (2) Operational frequency
- (3) Variable range of F & L
- (4) Internal capacitance
- (5) Unloaded Q