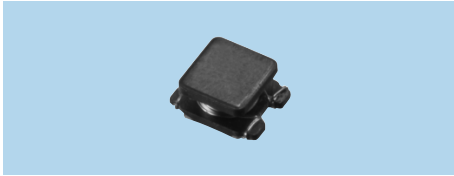


# Step Up DC/DC Converter Transformers for Strobe Light CT Series

## C2-T1.8D

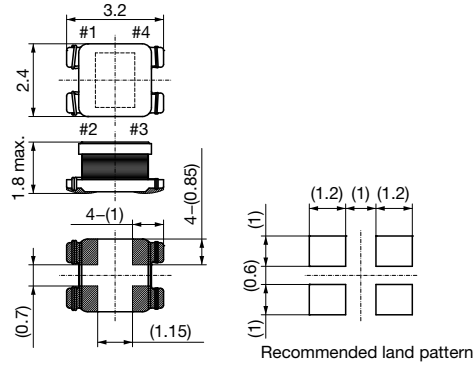


**Specifications**

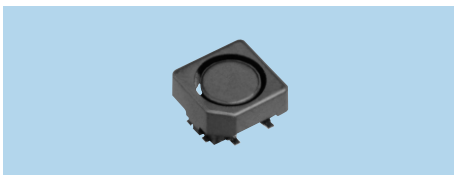
- (1) –
- (2) 10~1,000kHz
- (3) 0.5W

**Features**

- SMD
- 2,000pcs./Reel



## C3-T2.2R

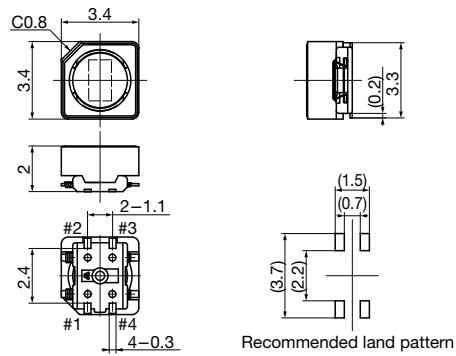


**Specifications**

- (1) –
- (2) 10~1,000kHz
- (3) 0.5W

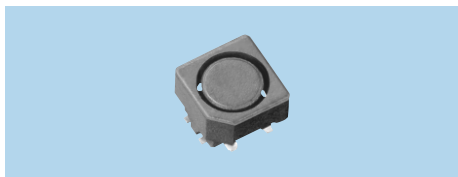
**Features**

- SMD
- 2,000pcs./Reel



- (1) Inductance
- (2) Operational frequency
- (3) Power capacity

C3-T2.5R

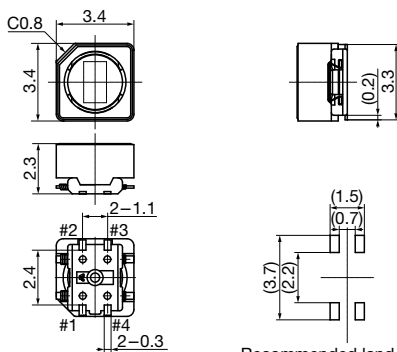


Specifications

- (1) -
- (2) 10~1,000kHz
- (3) 0.6W

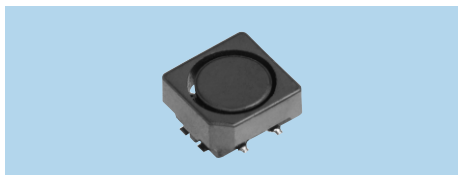
Features

- SMD
- 2,000pcs./Reel



Recommended land pattern

C4-T2.5R

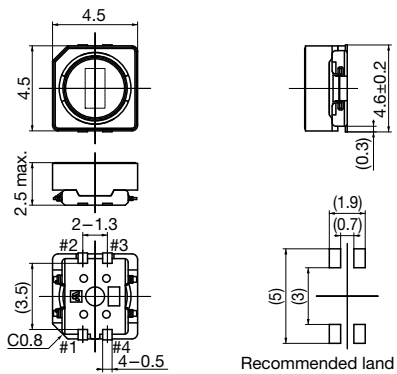


Specifications

- (1) -
- (2) 10~1,000kHz
- (3) 0.8W

Features

- SMD
- 2,000pcs./Reel

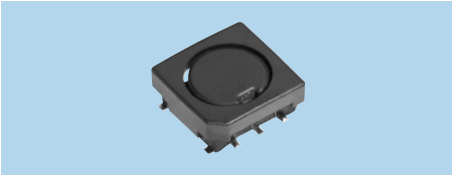


Recommended land pattern

- (1) Inductance
- (2) Operational frequency
- (3) Power capacity

• Any products mentioned in this catalog are subject to any modification in their appearance and others for improvements without prior notification.  
 • The details listed here are not a guarantee of the individual products at the time of ordering. When using the products, you will be asked to check their specifications.

### C5-T2.2R1

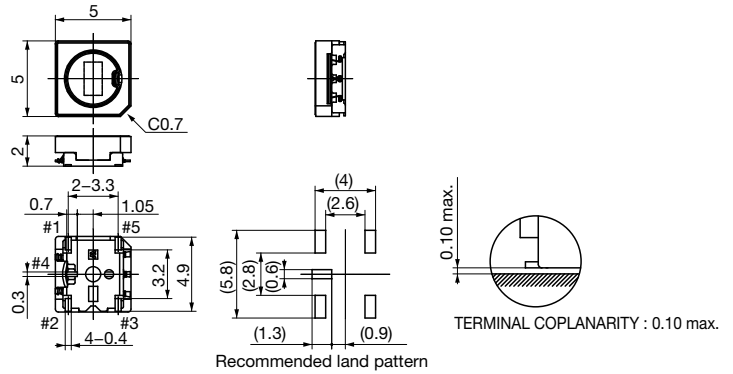


**Specifications**

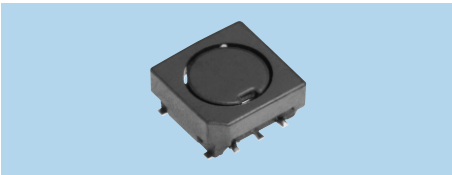
- (1) -
- (2) 10~1,000kHz
- (3) 0.8W

**Features**

- SMD
- 2,000pcs./Reel



### C5-T2.5R1

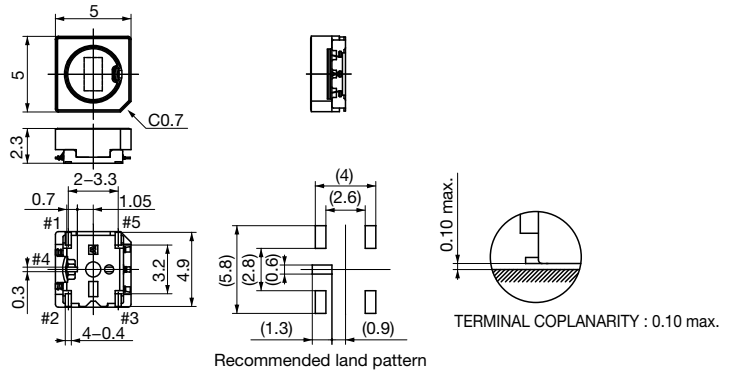


**Specifications**

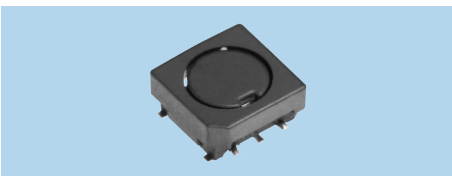
- (1) -
- (2) 10~1,000kHz
- (3) 1W

**Features**

- SMD
- 2,000pcs./Reel



### C5-T3R1

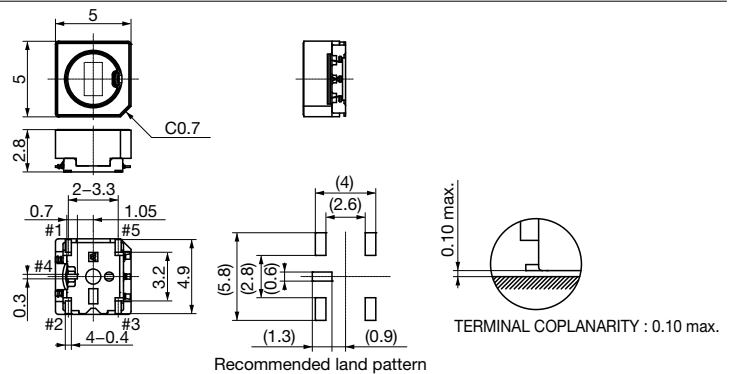


**Specifications**

- (1) -
- (2) 10~1,000kHz
- (3) 1.2W

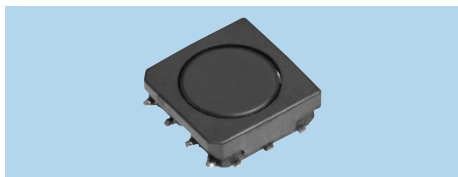
**Features**

- SMD
- 2,000pcs./Reel



- (1) Inductance
- (2) Operational frequency
- (3) Power capacity

C6-T2.2R

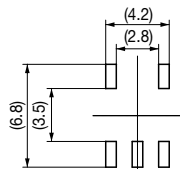
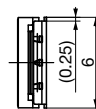
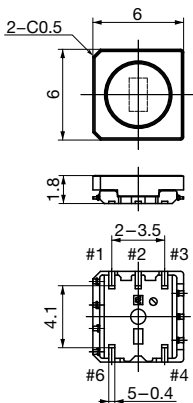


Specifications

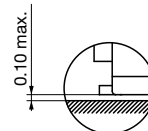
- (1) -
- (2) 10~1,000kHz
- (3) 1W

Features

- SMD
- 2,000pcs./Reel

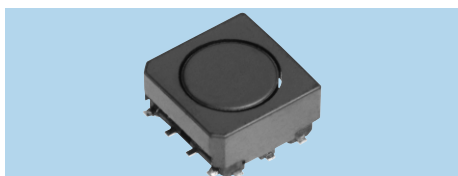


Recommended land pattern



TERMINAL COPLANARITY : 0.10 max.

C6-T3R

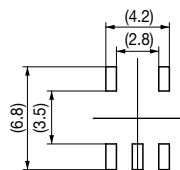
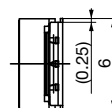
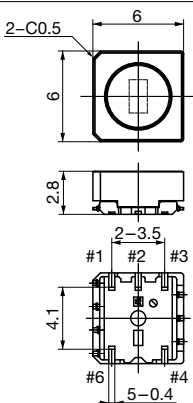


Specifications

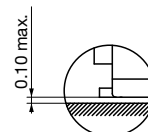
- (1) -
- (2) 10~1,000kHz
- (3) 1.5 W

Features

- SMD
- 2,000pcs./Reel



Recommended land pattern



TERMINAL COPLANARITY : 0.10 max.

- (1) Inductance
- (2) Operational frequency
- (3) Power capacity