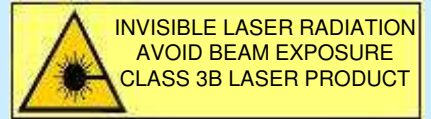
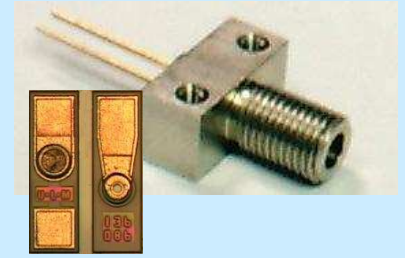


6mW / 12mW VCSEL SMA Receptacle / Chip

- ◆ Vertical Cavity Surface-Emitting Laser
- ◆ 6mW / 12mW peak power
- ◆ >2,5 Gbps speed
- ◆ e.g. for storage, free space, sensing
- ◆ other wavelengths available, e.g. for WDM



Preliminary

ELECTRO-OPTICAL CHARACTERISTICS Receptacle (Chip)

PARAMETER	SYMBOL	UNITS	MIN	TYP	MAX	TEST CONDITIONS
Emission wavelength	λ_R	nm	835	850	860	T=20°C
Fiber-coupled mean power (power)	mW		6(12)			Fiber 125 μ m, 0.37NA, T=20°C
Threshold current	I_{TH}	mA			7	T=20°C
Variation of I_{TH} over Temp.	$\Delta I_{TH}(T)$	mA		0.8		T=0 .. 70°C
Threshold voltage	U_{TH}	V	1.5	1.8	2.0	T=20°C
Laser current	I_{OP}	mA		20		$P_{opt}=6$ mW*, T=20°C
Laser voltage	U_{OP}	V	1.6	2.0	2.3	$P_{opt}=6$ mW*, T=20°C
Wallplug efficiency	η_{WP}	%	5	10	30	$P_{opt}=6$ mW*, T=20°C
Slope Efficiency	η_s	W/A	0.3	0.5	0.8	T= 20°C*
Variation of η_s over Temp.	$\Delta \eta_s(T)$	W/A		0.2		T= 0 .. 70°C*
Differential series resistance	R_s	Ω		25		$P_{opt}=6$ mW*
3dB modulation bandwidth	ν_{3dB}	GHz	3			$P_{opt}=6$ mW*
Rise and fall time	t_R/t_F	ps		90	150	20%..80%; $P_{off/on}=0.5/6.0$ mW*
Relative intensity noise	RIN	dB/Hz		-130	-120	$P_{opt} = 6$ mW* @ 1 GHz
Wavelength tuning over temperature		nm/K		0.07		
Thermal resistance	$R_{thermal}$	K/mW			1	
Spectral bandwidth	$\Delta\lambda$	nm			1	rms

* in optical Fiber 125 μ m, NA 0,37

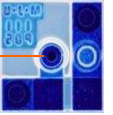
ABSOLUTE MAXIMUM RATINGS

Storage temperature	-55 .. 125°C
Operating temperature	-30 .. 85°C
Electrical power dissipation	100 mW
Continuous forward current	40 mA
Reverse voltage	8V
Pin Soldering temperature	290°C

NOTICE: Stresses greater than those listed under „Absolute Maximum Ratings“ may cause permanent damage to the device. These are stress ratings only and functional operation of the device at these or any other condition beyond those indicated for extended periods of time may effect device reliability.



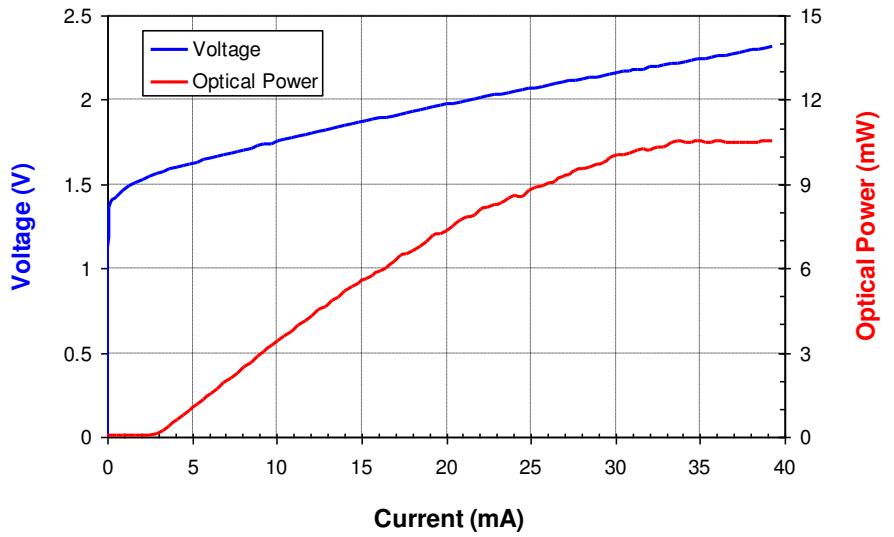
ATTENTION: Electrostatic Sensitive Devices
Observe Precautions for Handling



ULM850-01-TT-HSMAOP

LIV
(optical fiber
125µm, NA 0.37)

Other fiber core
diameters available
upon request



<i>Description</i>	6mW VCSEL SMA Receptacle	12mW VCSEL TO56	12mW VCSEL Chip
<i>Cap</i>	-	Ball lens	-
<i>Common</i>	anode	anode	-
<i>Type</i>	ULM850-01-TT-HSMAOP	ULM850-01-TT-H56BOP	ULM850-01-TT-H0101U

