

61063

PHOTODIODE "PILL PACK"



05/29/03

Features:

- Hermetically sealed
- Fast switching speed
- Small package
- Suitable for high-density PC board mounting

Applications:

- Incremental encoding
- Reflective sensors
- Position sensors
- Level sensors

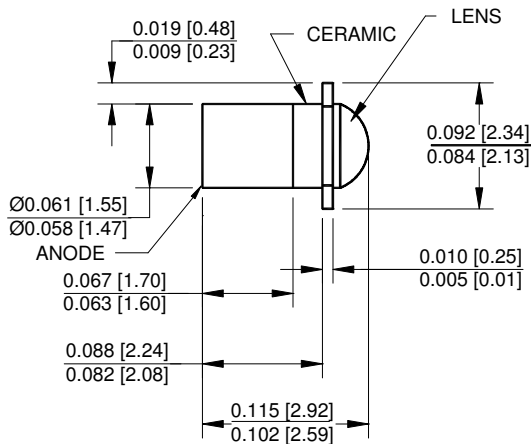
DESCRIPTION

The **61063** is a Silicon Photodiode in a package designed to be mounted in a double-clad printed circuit board. It is lensed for minimum response to stray light. Fast operating speed makes this device the best option in applications where speed considerations predominate. Available custom binned to customer specifications or screened to MIL-PRF-19500.

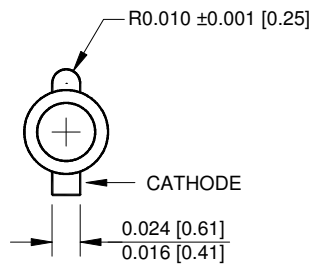
ABSOLUTE MAXIMUM RATINGS

Storage Temperature.....	-65°C to +150°C
Operating Temperature (See part selection guide for actual operating temperature).....	-55°C to +125°C
Reverse Voltage	30V
Power Dissipation (Derate at the rate of 1.5 mW/°C above 25°C)	150mW
Lead Soldering Temperature (10 seconds).....	240°C

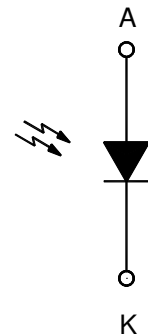
Package Dimensions



ALL DIMENSIONS ARE IN INCHES [MILLIMETERS]



Schematic Diagram



61063

05/29/03

PHOTODIODE "PILL PACK"

ELECTRICAL CHARACTERISTICS

T_A = 25°C unless otherwise specified.

PARAMETER		SYMBOL	MIN	TYP	MAX	UNITS	TEST CONDITIONS	NOTE
Light Current	61063-X01	I _L	6.0	15		μA	V _R = 5.0V, H = 20mW/cm ²	1
Dark Current	61063-X01	I _D			50	nA	V _{CE} = 5V, H = 0	1
Reverse Breakdown Voltage	61063-X01	V _{BR}	30			V	I _R = 100μA, H = 0	
Rise Time	61063-X01	t _r		300		nS	V _R = 5V, R _L = 1kΩ	
Fall Time	61063-X01	t _f		300		nS	V _R = 5V, R _L = 1kΩ	
Angular Response	61063-X01	θ		24		degrees		2

NOTES:

1. Irradiance in mW/cm² from a tungsten source at a color temperature of 2870K.
2. The angle between incidence for peak response and incidence for 50% of peak response.

SELECTION GUIDE

PART NUMBER	PA DESCRIPTION	I _L (MIN) Range
61063-001	Commercial	6μA
61063-101	Screened	6μA