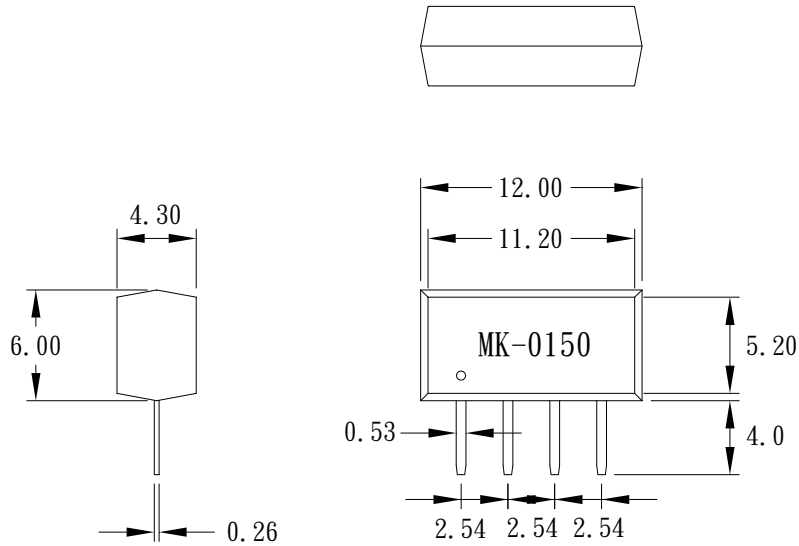


# PRODUCT SPECIFICATION

DATE: 06/01/11'

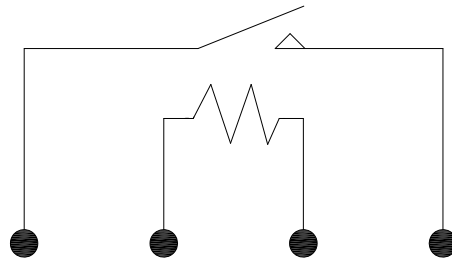
<b>cosmo</b> ELECTRONICS CORPORATION	REED SENSOR :	NO. 50R21012	REV.
	<b>MK-0150</b>	SHEET 1 OF 2	2

## 1. OUTSIDE DIMENSION : UNIT ( mm )



TOLERANCE :  $\pm 0.1\text{mm}$

## 2. SCHEMATIC : TOP VIEW



# PRODUCT SPECIFICATION

DATE: 06/01/11'

<b>cosmo</b> ELECTRONICS CORPORATION	REED SENSOR :	NO. 50R21012	REV.
	<b>MK-0150</b>	SHEET 2 OF 2	2

## 3.0 SPECIFICATIONS :

3.1	Resistance		150 $\Omega$	( $\pm 10\%$ )
3.2	Contact Rating		5 VA	(max)
3.3	Switching voltage		100 VDC	(max)
3.4	Switching current		0.5 A	(max)
3.5	Carry current		0.6 A	(max)
3.6	Breakdown voltage	(open contact)	150 VDC	(min)
3.7	Contact resistance	(initial)	100 m $\Omega$	(max)
3.8	Operate time	(incl. bounce)	0.5 ms	(max)
3.9	Release time		0.2 ms	(max)
3.10	Insulation resistance		$10^{10}$ $\Omega$	(min)
3.11	Life expectancy	(5 VDC, 10mA)	$5 \times 10^6$	
3.12	Total pull-in sensitivity		10-40 AT	(max)
3.13	Operating temp		-40 to 125°C	