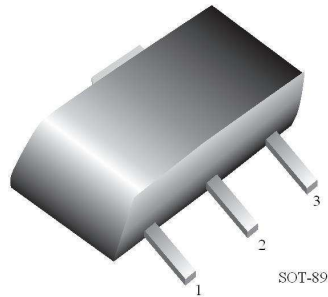


## 78LXXPRG



**1:Output 2:GND 3:Input**

### 3-Terminal Positive Regulators

The 78LXX series of three terminal positive regulators is available with several fixed output voltages (eg. 5V, 6V, 8V, 9V, 12V & 15V) making them useful in a wide range of applications.

Note : "G" in Part Number stands for Lead Free Part.

#### Absolute Maximum Ratings\* $T_A=25^\circ\text{C}$ unless otherwise noted

Symbol	Parameter	Value	Units
$V_I$	Input Voltage	30	V
$P_D$	Power Dissipation	500	mW
$T_{OPR}$	Operating Temperature Range	-25 to +125	$^\circ\text{C}$
$T_J, T_{STG}$	Operating & Storage Junction Temperature Range	-55 to +150	$^\circ\text{C}$

\*These ratings are limiting values above which the serviceability of any semiconductor device may be impaired.

### Electrical Characteristics

#### 78L05 (5V Voltage Regulator) ( $V_I=10\text{V}, I_O=40\text{mA}, 0^\circ\text{C}<T_J<125^\circ\text{C}, C_I=0.33\mu\text{F}, C_O=0.1\mu\text{F}$ , unless otherwise noted)

Symbol	Parameter	Test Conditions	MIN	TYP	MAX	Units
$V_O$	Output Voltage	$T_J = 25^\circ\text{C}$	4.80	5.00	5.20	V
		$7\text{V} \leq V_I \leq 20\text{V}, 1\text{mA} \leq I_O \leq 40\text{mA}$	4.75	5.00	5.25	V
		$7\text{V} \leq V_I \leq 20\text{V}, 1\text{mA} \leq I_O \leq 70\text{mA}$	4.75	5.00	5.25	V (note)
$\Delta V_O$	Load Regulation	$T_J = 25^\circ\text{C}, 1\text{mA} \leq I_O \leq 100\text{mA}$		11	60	mV
		$T_J = 25^\circ\text{C}, 1\text{mA} \leq I_O \leq 40\text{mA}$		5	30	mV
$\Delta V_O$	Line Regulation	$T_J = 25^\circ\text{C}, 7\text{V} \leq V_I \leq 20\text{V}$		32	150	mV
		$T_J = 25^\circ\text{C}, 8\text{V} \leq V_I \leq 20\text{V}$		26	100	mV
$I_q$	Quiescent Current	$T_J = 25^\circ\text{C}$		3.8	6.0	mA
$\Delta I_q$	Quiescent Current Change	$8\text{V} \leq V_I \leq 20\text{V}$			1.5	mA
		$1\text{mA} \leq I_O \leq 40\text{mA}$			0.1	mA
$V_N$	Output Noise Voltage	$10\text{Hz} \leq f \leq 100\text{Hz}$		42		$\mu\text{V}$
RR	Ripple Rejection	$T_J = 25^\circ\text{C}, 8\text{V} \leq V_I \leq 18\text{V}, f = 120\text{Hz}$	41	80		dB
Vd	Dropout Voltage	$T_J = 25^\circ\text{C}$		1.7		V

**Marking for ML78L05PRG = 78L05**



# MiniLogic Device Corporation

## 78L06 (6V Voltage Regulator) ( $V_I=11V$ , $I_O=40mA$ , $0^\circ C < T_J < 125^\circ C$ , $C_I=0.33\mu F$ , $C_O=0.1\mu F$ , unless otherwise noted)

Symbol	Parameter	Test Conditions	MIN	TYP	MAX	Units
$V_O$	Output Voltage	$T_J = 25^\circ C$	5.75	6.00	6.25	v
		$8V \leq V_I \leq 20V$ , $1mA \leq I_O \leq 40mA$	5.70	6.00	6.30	V
		$8V \leq V_I \leq 20V$ , $1mA \leq I_O \leq 70mA$	5.70	6.00	6.30	V (note)
$\Delta V_O$	Load Regulation	$T_J = 25^\circ C$ , $1mA \leq I_O \leq 100mA$		16	80	mV
		$T_J = 25^\circ C$ , $1mA \leq I_O \leq 40mA$		9	40	mV
$\Delta V_O$	Line Regulation	$T_J = 25^\circ C$ , $8.5V \leq V_I \leq 20V$		35	175	mV
		$T_J = 25^\circ C$ , $9V \leq V_I \leq 20V$		29	125	mV
$I_q$	Quiescent Current	$T_J = 25^\circ C$		3.9	6.0	mA
$\Delta I_q$	Quiescent Current Change	$9V \leq V_I \leq 20V$			1.5	mA
		$1mA \leq I_O \leq 40mA$			0.1	mA
$V_N$	Output Noise Voltage	$10Hz \leq f \leq 100Hz$		46		$\mu V$
RR	Ripple Rejection	$T_J = 25^\circ C$ , $9V \leq V_I \leq 19V$ , $f = 120Hz$	40	48		dB
$V_d$	Dropout Voltage	$T_J = 25^\circ C$		1.7		V

## 78L08 (8V Voltage Regulator) ( $V_I=14V$ , $I_O=40mA$ , $0^\circ C < T_J < 125^\circ C$ , $C_I=0.33\mu F$ , $C_O=0.1\mu F$ , unless otherwise noted)

Symbol	Parameter	Test Conditions	MIN	TYP	MAX	Units
$V_O$	Output Voltage	$T_J = 25^\circ C$	7.70	8.00	8.30	v
		$10.5V \leq V_I \leq 23V$ , $1mA \leq I_O \leq 40mA$	7.60	8.00	8.40	V
		$10.5V \leq V_I \leq 23V$ , $1mA \leq I_O \leq 70mA$	7.60	8.00	8.40	V (note)
$\Delta V_O$	Load Regulation	$T_J = 25^\circ C$ , $1mA \leq I_O \leq 100mA$		18	80	mV
		$T_J = 25^\circ C$ , $1mA \leq I_O \leq 40mA$		10	40	mV
$\Delta V_O$	Line Regulation	$T_J = 25^\circ C$ , $10.5V \leq V_I \leq 23V$		42	175	mV
		$T_J = 25^\circ C$ , $11V \leq V_I \leq 23V$		36	125	mV
$I_q$	Quiescent Current	$T_J = 25^\circ C$		4.0	6.0	mA
$\Delta I_q$	Quiescent Current Change	$11V \leq V_I \leq 23V$			1.5	mA
		$1mA \leq I_O \leq 40mA$			0.1	mA
$V_N$	Output Noise Voltage	$10Hz \leq f \leq 100Hz$		54		$\mu V$
RR	Ripple Rejection	$T_J = 25^\circ C$ , $13V \leq V_I \leq 23V$ , $f = 120Hz$	37	46		dB
$V_d$	Dropout Voltage	$T_J = 25^\circ C$		1.7		V



## 78L09 (9V Voltage Regulator) ( $V_I=15V$ , $I_O=40mA$ , $0^\circ C < T_J < 125^\circ C$ , $C_I=0.33\mu F$ , $C_O=0.1\mu F$ , unless otherwise noted)

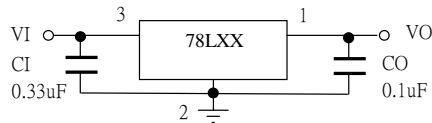
Symbol	Parameter	Test Conditions	MIN	TYP	MAX	Units
$V_O$	Output Voltage	$T_J = 25^\circ C$	8.64	9.00	9.36	v
		$12V \leq V_I \leq 24V$ , $1mA \leq I_O \leq 40mA$	8.55	9.00	9.45	V
		$12V \leq V_I \leq 24V$ , $1mA \leq I_O \leq 70mA$	8.55	9.00	9.45	V (note)
$\Delta V_O$	Load Regulation	$T_J = 25^\circ C$ , $1mA \leq I_O \leq 100mA$		19	90	mV
		$T_J = 25^\circ C$ , $1mA \leq I_O \leq 40mA$		11	40	mV
$\Delta V_O$	Line Regulation	$T_J = 25^\circ C$ , $12V \leq V_I \leq 24V$		45	175	mV
		$T_J = 25^\circ C$ , $13V \leq V_I \leq 24V$		40	125	mV
$I_q$	Quiescent Current	$T_J = 25^\circ C$		4.1	6.0	mA
$\Delta I_q$	Quiescent Current Change	$12V \leq V_I \leq 24V$			1.5	mA
		$1mA \leq I_O \leq 40mA$			0.1	mA
$V_N$	Output Noise Voltage	$10Hz \leq f \leq 100Hz$		58		$\mu V$
RR	Ripple Rejection	$T_J = 25^\circ C$ , $15V \leq V_I \leq 25V$ , $f = 120Hz$		45		dB
Vd	Dropout Voltage	$T_J = 25^\circ C$		1.7		V

## 78L12 (12V Voltage Regulator) ( $V_I=19V$ , $I_O=40mA$ , $0^\circ C < T_J < 125^\circ C$ , $C_I=0.33\mu F$ , $C_O=0.1\mu F$ , unless otherwise noted)

Symbol	Parameter	Test Conditions	MIN	TYP	MAX	Units
$V_O$	Output Voltage	$T_J = 25^\circ C$	11.50	12.00	12.25	v
		$14.5V \leq V_I \leq 27V$ , $1mA \leq I_O \leq 40mA$	11.40	12.00	12.60	V
		$14.5V \leq V_I \leq 27V$ , $1mA \leq I_O \leq 70mA$	11.40	12.00	12.60	V (note)
$\Delta V_O$	Load Regulation	$T_J = 25^\circ C$ , $1mA \leq I_O \leq 100mA$		22	100	mV
		$T_J = 25^\circ C$ , $1mA \leq I_O \leq 40mA$		13	50	mV
$\Delta V_O$	Line Regulation	$T_J = 25^\circ C$ , $14.5V \leq V_I \leq 27V$		55	250	mV
		$T_J = 25^\circ C$ , $16V \leq V_I \leq 27V$		49	200	mV
$I_q$	Quiescent Current	$T_J = 25^\circ C$		4.3	6.5	mA
$\Delta I_q$	Quiescent Current Change	$16V \leq V_I \leq 27V$			1.5	mA
		$1mA \leq I_O \leq 40mA$			0.1	mA
$V_N$	Output Noise Voltage	$10Hz \leq f \leq 100Hz$		70		$\mu V$
RR	Ripple Rejection	$T_J = 25^\circ C$ , $15V \leq V_I \leq 25V$ , $f = 120Hz$	37	42		dB
Vd	Dropout Voltage	$T_J = 25^\circ C$		1.7		V

**78L15 (15V Voltage Regulator)** ( $V_I=23V$ ,  $I_O=40mA$ ,  $0^\circ C < T_J < 125^\circ C$ ,  $C_I=0.33\mu F$ ,  $C_O=0.1\mu F$ , unless otherwise noted)

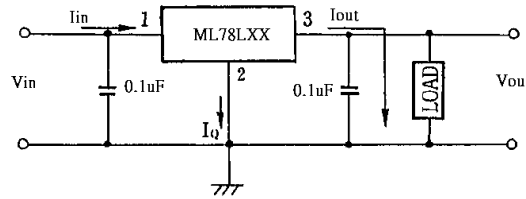
Symbol	Parameter	Test Conditions	MIN	TYP	MAX	Units
$V_O$	Output Voltage	$T_J = 25^\circ C$	14.40	15.00	15.60	v
		$17.5V \leq V_I \leq 30V$ , $1mA \leq I_O \leq 40mA$	14.25	15.00	15.75	V
		$V_I = 23V$ , $1mA \leq I_O \leq 70mA$	14.25	15.00	15.75	V (note)
$\Delta V_O$	Load Regulation	$T_J = 25^\circ C$ , $V_I = 23V$ , $1mA \leq I_O \leq 100mA$		25	150	mV
		$T_J = 25^\circ C$ , $V_I = 23V$ , $1mA \leq I_O \leq 40mA$		15	75	mV
$\Delta V_O$	Line Regulation	$T_J = 25^\circ C$ , $17.5V \leq V_I \leq 30V$ , $I_O = 40mA$		65	300	mV
		$T_J = 25^\circ C$ , $19V \leq V_I \leq 30V$ , $I_O = 40mA$		58	250	mV
$I_q$	Quiescent Current	$T_J = 25^\circ C$		4.6	6.5	mA
$\Delta I_q$	Quiescent Current Change	$19V \leq V_I \leq 30V$ , $I_O = 40mA$			1.5	mA
		$V_I = 23V$ , $1mA \leq I_O \leq 40mA$			0.1	mA
$V_N$	Output Noise Voltage	$10Hz \leq f \leq 100Hz$		82		$\mu V$
RR	Ripple Rejection	$T_J = 25^\circ C$ , $18.5V \leq V_I \leq 28.5V$ , $f = 120Hz$	34	39		dB
$V_d$	Dropout Voltage	$T_J = 25^\circ C$		1.7		V

**Marking for ML78L15PRG = 78L15**
**Typical Application**


Note : Bypass capacitors are recommended for optimum stability and transient response and should be located as close as possible to the regulator.

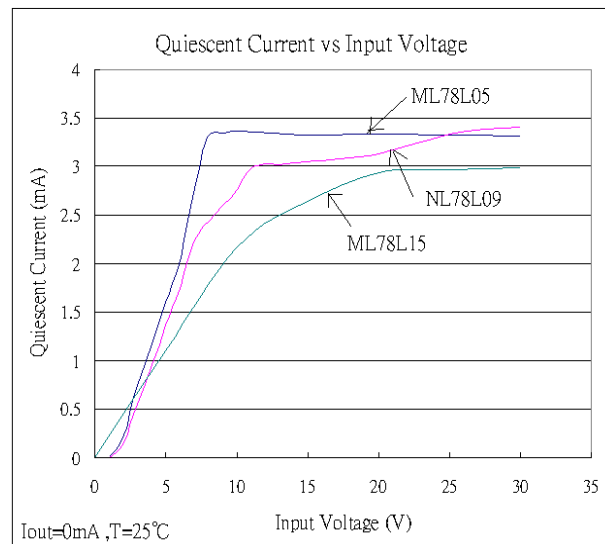
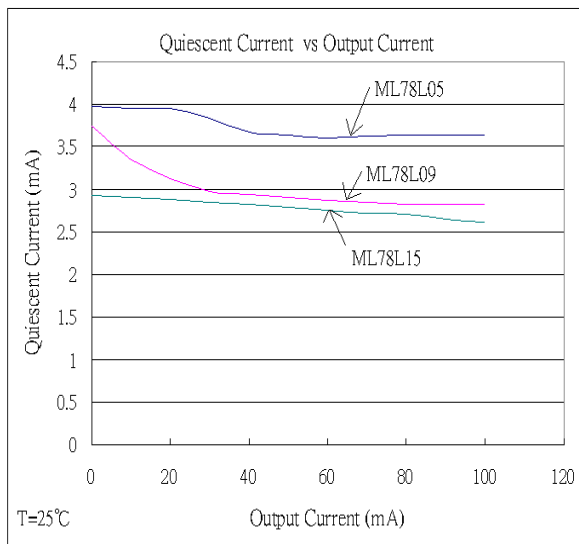
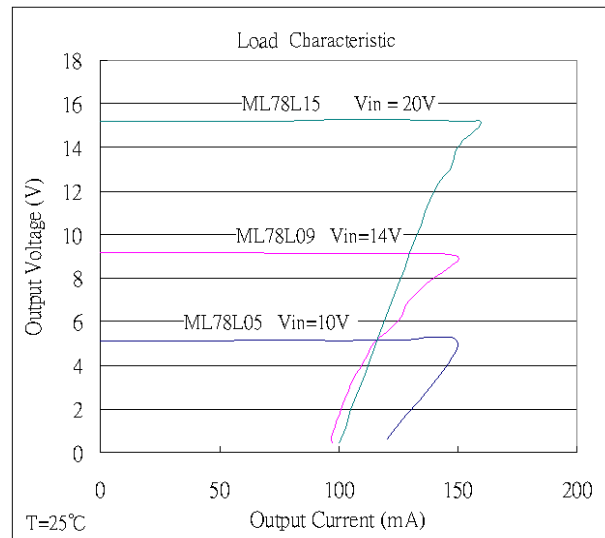
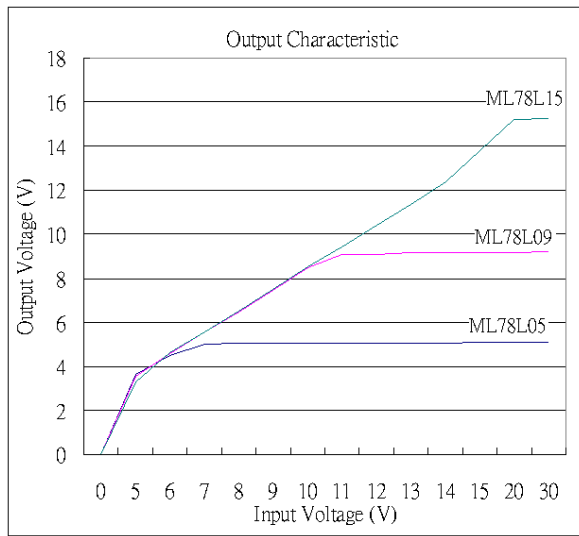
## ■ Test Circuit

1. Output Voltage, Line Regulation, Load Regulation, Quiescent Current, Average Temperature Coefficient of Output Voltage, Output Noise Voltage

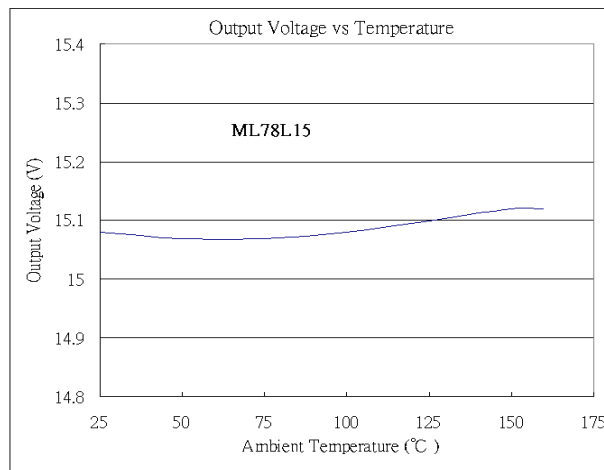
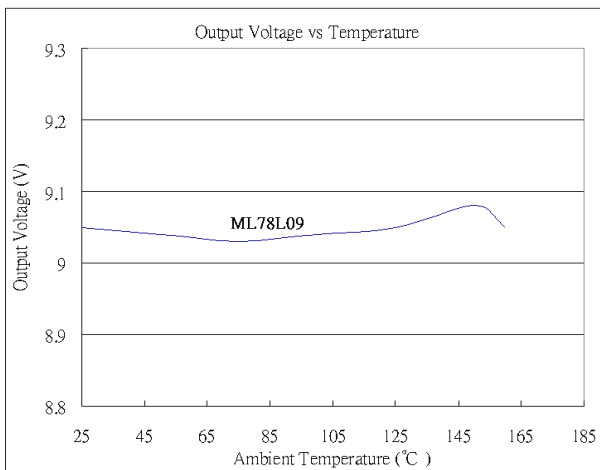
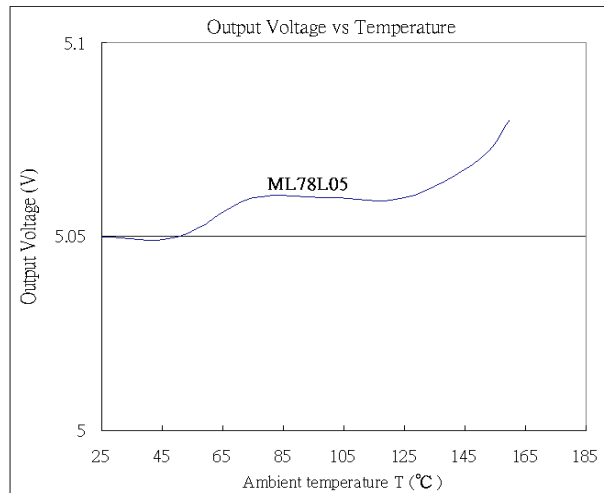
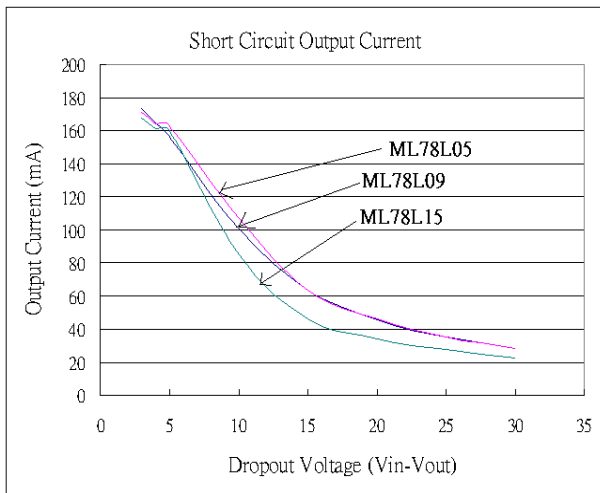
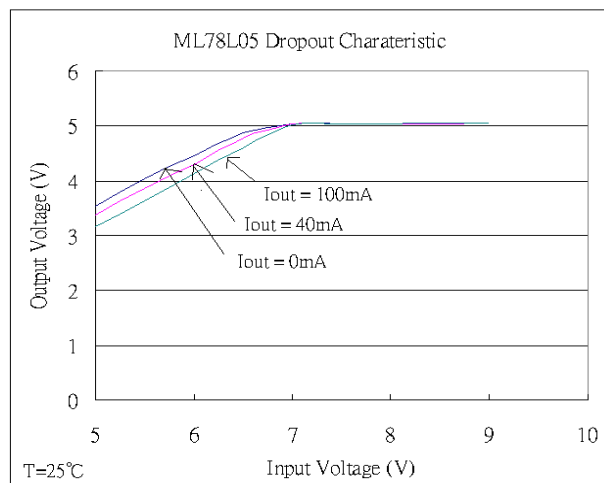
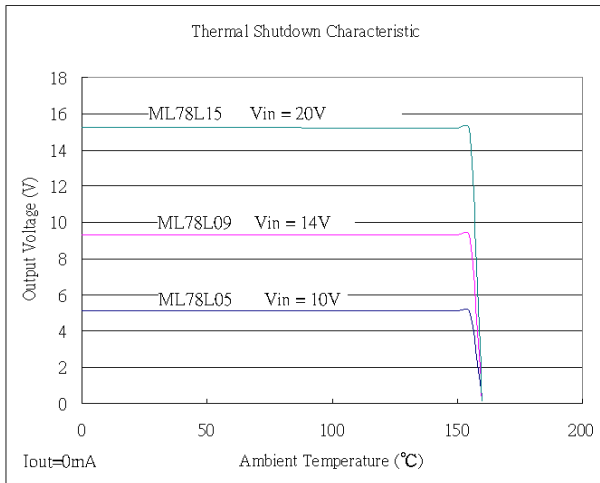


$$I_q = I_N - I_o$$

## ■ Typical Characteristic



## Typical Characteristic



### DISCLAIMER:

The information presented in this document does not form part of any quotation or contract, is believed to be accurate and reliable and may be changed without notice. No liability will be accepted by the publisher for any consequence of its use.