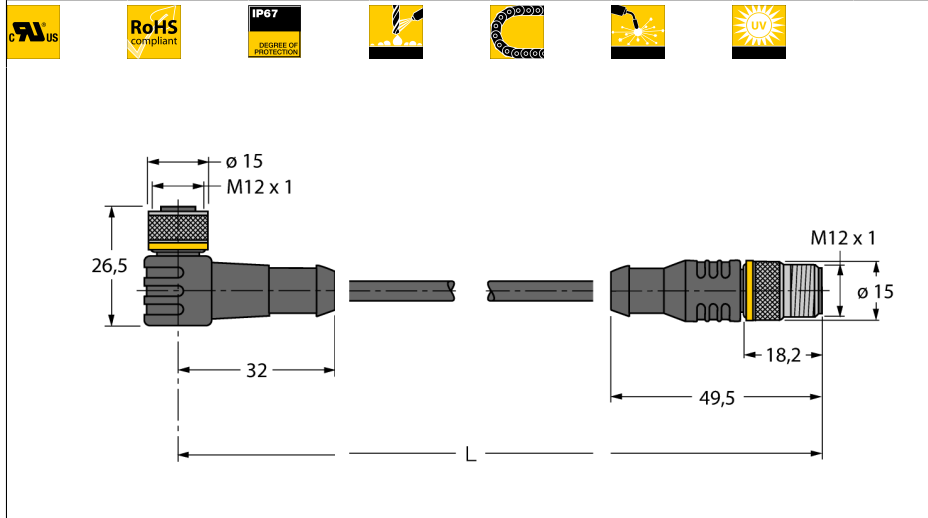


**Actuator/sensor cable, PUR
extension cable
WKC5T-P7X3-0,6-RSC5T/TXL**



- Female M12, angled, 4-pin + PE
- With 3-color LED (PNP, yellow, yellow, green)
- Male M12, straight, 4-pin + PE
- Sheath material: PUR
- Sheath color: black
- Qualified for drag chain use
- Weld-splatter resistant
- Resistant to chemicals, UV radiation and oils
- Flame retardant
- Free from halogen, silicone, PVC and LABS
- Approval: cULus
- RoHS conform
- Protection class IP67
- Cable length: 0.6 m

Type code WKC5T-P7X3-0,6-RSC5T/TXL
Ident no. 6626012

Connector A side
 Number of pins female connector, M12 x 1, angled 4 + PE
 Contacts metal, CuZn, gold-plated
 Contact carriers plastic, TPU, black
 Grip plastic, TPU, transparent
 Coupling nut/screw metal, CuZn, nickel-plated
 Coupling nut/screw metal
 Protection class IP67, only in screwed state
 Operating voltage LED green
 Display switch state LED yellow/yellow
 Mechanical lifespan > 100 mating cycles
 Pollution degree 3
 Tightening torque 0.8 ... 1 Nm
 (observe max. value of counter piece!)

Connector B side
 Number of pins male connector, M12 x 1, straight 4+PE
 Contacts metal, CuZn, gold-plated
 Contact carriers plastic, TPU, black
 Grip plastic, TPU, black
 Coupling nut/screw metal, CuZn, nickel-plated
 Protection class IP67, only in screwed state
 Mechanical lifespan > 100 contact durability
 Pollution degree 3
 Tightening torque 0.8 ... 1 Nm
 (observe max. value of counter piece!)

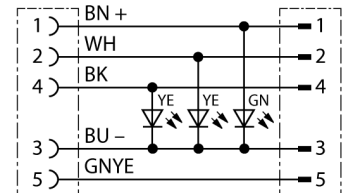
General data
 Cable diameter Ø 5.5 mm +/-0.20
 Cable length 0.6 m
 Sheath color PUR (black)
 Core insulation (colors) PP (BN, WH, BU, BK, GNYE)
 Core cross-section 5x0.34mm²
 Litz wire arrangement 42x0.1 mm

Electrical features at +20 °C
 Rated current 4 A
 Rated voltage [U_{max}] 30 V
 Insulation resistance > 1 GΩ x km
 Test voltage 2000 V
 Forward resistance max. 57.5 Ω/km

Pin assignment



circuit diagram



**Actuator/sensor cable, PUR
extension cable
WKC5T-P7X3-0,6-RSC5T/TXL**

TURCK

Industrial
Automation

Mechanical and chemical properties

Max. tensile strength (static)	≤ 50 N/mm ²
Max. tensile strength (dynamic)	≤ 20 N/mm ²
bending cycles	> 5 mil.
Static Bending Radius	> 5 x Ø
Bending radius (flexible use)	> 10 x Ø
Admissible acceleration	max. 5 m/s ²
Admissible travel path, horizontal	5 m (at 5 m/s ²)
Admissible travel path, vertical	2 m (at 5 m/s ²)
Admissible traversing speed	3.3 m/s
Torsional stress	± 180 °/m
Ambient temperature	
at rest	-50 ... 80°C
In moving state	-25 ... 80°C
drag chain operation	-25 ... 60°C