

CRD89C51RC1T

8 bit, fast, microcontroller with 32KB program/ISP Flash and 2KB RAM

Product List

CRD89C51RC1T-25, 5V 25MHz Flash MCU
CRD89L51RC1T-25, 3V 25MHz Flash MCU

Description

The CRD89C51RC1T is an 8-bit single chip microcontroller with 32K bytes Flash and 2K byte RAM. It is a derivative of the 8052 microcontroller family. Being 1T, it executes one machine cycle per oscillator clock. It allows 8051 users a high performance path for their existing product architecture. About one third of the instructions are pure 1T, and the average speed is 8 times that of a traditional 8051.

In addition to high performance, CRD89C51RC1T offers 48 GPIOs, two data pointers, two serial ports, SPI and 2 wire serial interfaces, PCA, PWM, EEI and many additional functions that are described below. It can be programmed via ISP or external writer. The device has excellent EMI and ESD characteristics.

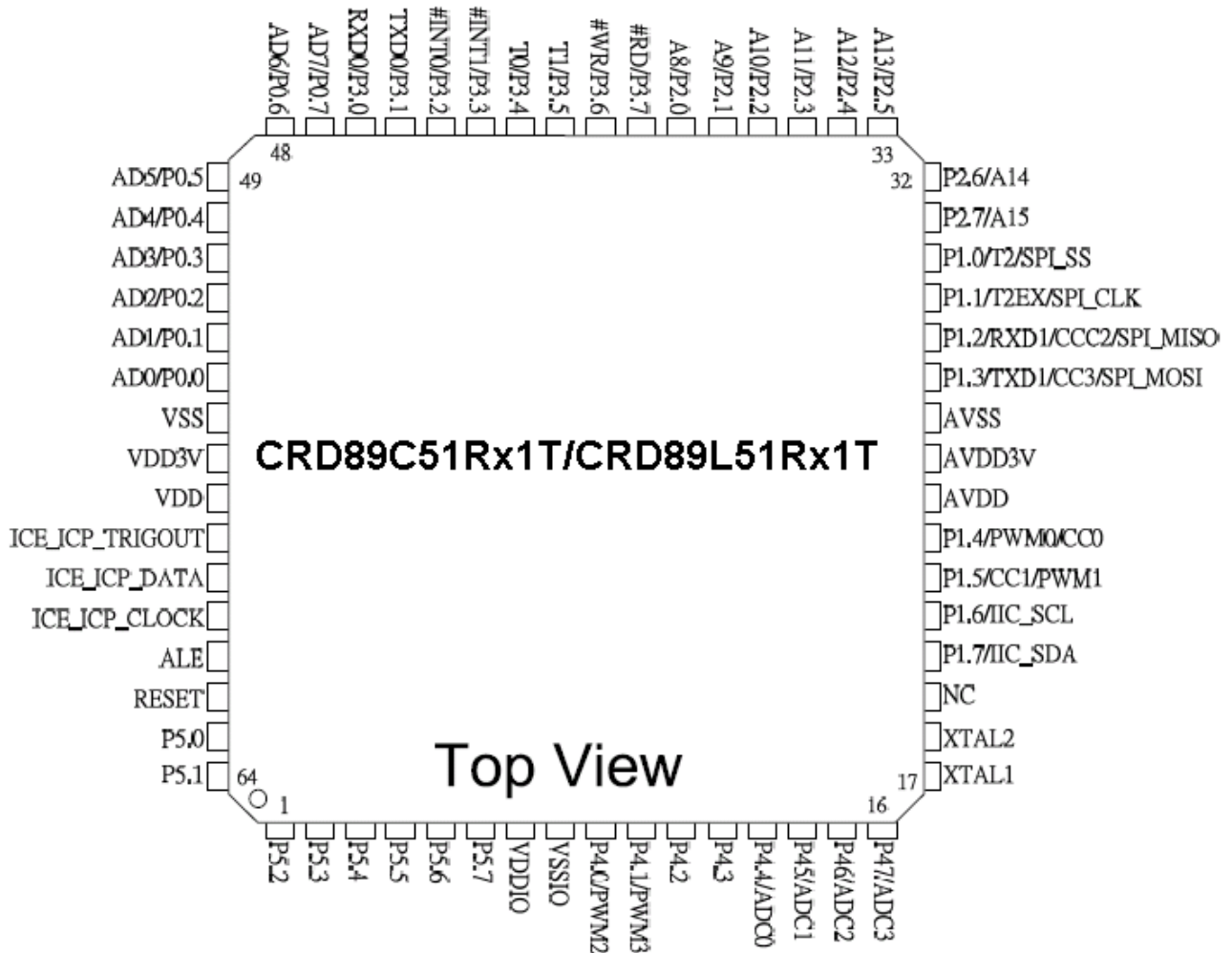
Ordering Information

CRD89C51RC1T-25-QG	25MHz, TQFP, 4.5V~5.5V
CRD89L51RC1T-25-QG	25MHz, TQFP, 2.7V~3.6V

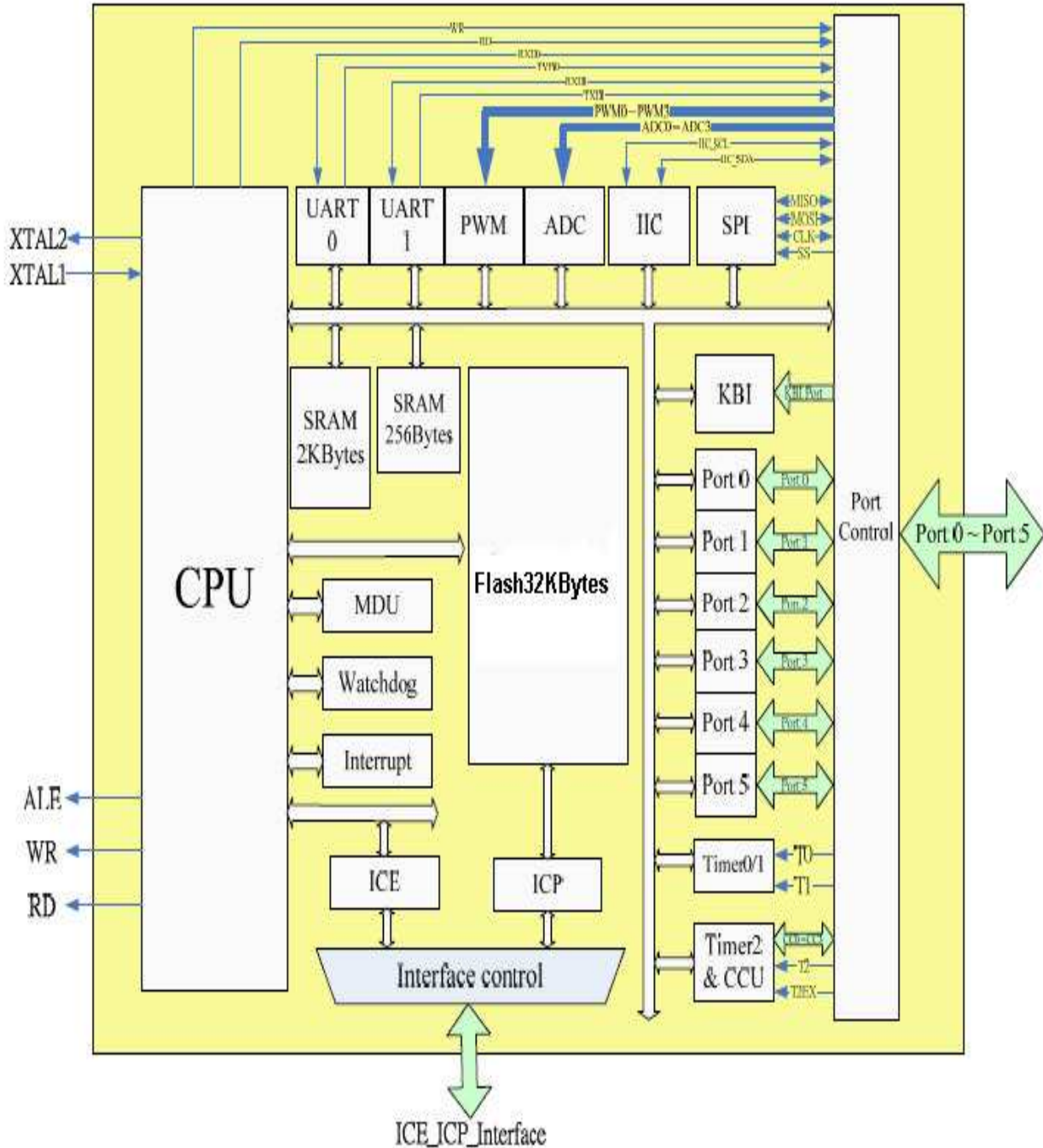
Features

- Operating Voltage: 2.7V ~ 3.6V or 4.5V ~ 5.5V
- General 8052 family compatibility
- fully compatible instruction set
- 1 clock per machine cycle
- Frequency runs up to 25MHz
- Embedded oscillator 1MHz - 24MHz
- 32K bytes on chip flash memory with ISP/IAP and EEPROM capabilities
- 2K Bytes on-chip expanded RAM
- 256 Bytes for standard 8052 RAM
- External RAM address up to 32KB
- Dual 16-bit Data Pointers (DPTR0 & DPTR1)
- Two independent UARTs
- Three 16 bit Timers/Counters
- 48 GPIOs
- IIC interface (master/slave mode)
- SPI interface (master/slave mode)
- Programmable Watchdog Timer
- 4 channel 16bit capture/compare/load unit
- 4 channel PWM (12/10/8 bit)
- 4 channel 10bit ADC
- External interrupt 0, 1 with two priority levels
- Expanded External Interrupt (EEI) interface for eight more external interrupts.
- Fast multiplication-Division Unit (16*16, 32/16, 16/16, 32-bit L/R shifting and 32-bit normalization)
- ALE output select for low EMI
- Power Management (IDLE & STOP mode)
- Code protection function
- I/O PAD withstands ESD 4KV (human body model).

Pin Assignment



Block Diagram



Pin Description

64L TQFP Pin#	Symbol	I/O	Names
1	P5.2	i/o	Bit 2 of port 5
2	P5.3	i/o	Bit 3 of port 5
3	P5.4	i/o	Bit 4 of port 5
4	P5.5	i/o	Bit 5 of port 5
5	P5.6	i/o	Bit 6 of port 5
6	P5.7	i/o	Bit 7 of port 5
7	VDD_IO		Power Supply
8	VSS_IO		Digital Ground
9	P4.0/PWM2	i/o	Bit 0 of port 4 & PWM Channel 2
10	P4.1/PWM3	i/o	Bit 1 of port 4 & PWM Channel 3
11	P42	i/o	Bit 2 of port 4
12	P43	i/o	Bit 3 of port 4
13	P4.4/ADC0	i/o	Bit 4 of port 4 & ADC Channel 0
14	P4.5/ADC1	i/o	Bit 5 of port 4 & ADC Channel 1
15	P4.6/ADC2	i/o	Bit 6 of port 4 & ADC Channel 2
16	P4.7/ADC3	i/o	Bit 7 of port 4 & ADC Channel 3
17	XTAL1	i	Crystal input
18	XTAL2	o	Crystal output
19	NC		No Connect
20	P1.7/IIC_SDA	i/o	Bit 7 of port 1 & IIC SDA pin
21	P1.6/IIC_SCL	i/o	Bit 6 of port 1 & IIC SCL pin
22	P1.5/PWM1/CC1	i/o	Bit 5 of port 1 & PWM Channel 1 & Timer2 compare/capture 1
23	P1.4/PWM0/CC0	i/o	Bit 4 of port 1 & PWM Channel 0 & Timer2 compare/capture 0
24	AVDD		Analog Power Supply
25	AVDD_3V		Analog Power Supply - 3V
26	AVSS		Analog Ground
27	P1.3/TXD1/CC3/SPI_MOSI	i/o	Bit 3 of port 1 & Timer2 compare/capture 3 & Serial interface channel 1 transmit data & SPI interface Serial Data Input pin
28	P1.2/RXD1/CC2/SPI_MISO	i/o	Bit 2 of port 1 & Timer2 compare/capture 2 & Serial interface channel 1 receive data & SPI interface Serial Data output pin
29	P1.1/T2EX/SPI_CLK	i/o	Bit 1 of port 1 & Timer2 capture trigger & SPI interface clock
30	P1.0/T2/SPI_SS	i/o	Bit 0 of port 1 & Timer2 external input clock & SPI interface slave select pin
31	P2.7/A15	i/o	Bit 7 of port 2 & Bit 15 of external memory address
32	P2.6/A14	i/o	Bit 6 of port 2 & Bit 14 of external memory address
33	P2.5/A13	i/o	Bit 5 of port 2 & Bit 13 of external memory address
34	P2.4/A12	i/o	Bit 4 of port 2 & Bit 12 of external memory address
35	P2.3/A11	i/o	Bit 3 of port 2 & Bit 11 of external memory address
36	P2.2/A10	i/o	Bit 2 of port 2 & Bit 10 of external memory address
37	P2.1/A9	i/o	Bit 1 of port 2 & Bit 9 of external memory address
38	P2.0/A8	i/o	Bit 0 of port 2 & Bit 8 of external memory address
39	P3.7/RD	i/o	Bit 7 of port 3 & external memory read signal
40	P3.6/WR	i/o	Bit 6 of port 3 & external memory write signal

64L TQFP Pin#	Symbol	I/O	Names
41	P3.5/T1	i/o	Bit 5 of port 3 & Timer 1 external input
42	P3.4/T0	i/o	Bit 4 of port 3 & Timer 0 external input
43	P3.3/INT1	i/o	Bit 3 of port 3 & External interrupt 1
44	P3.2/INT0	i/o	Bit 2 of port 3 & External interrupt 0
45	P3.1/TXD0	i/o	Bit 1 of port 3 & Serial interface channel 0 transmit data or receive clock in mode 0
46	P3.0/RXD0	i/o	Bit 0 of port 3 & Serial interface channel 0 receive/transmit data
47	P0.7/AD7	i/o	Bit 7 of port 0 & Bit 7 of external memory address/data
48	P0.6/AD6	i/o	Bit 6 of port 0 & Bit 6 of external memory address/data
49	P0.5/AD5	i/o	Bit 5 of port 0 & Bit 5 of external memory address/data
50	P0.4/AD4	i/o	Bit 4 of port 0 & Bit 4 of external memory address/data
51	P0.3/AD3	i/o	Bit 3 of port 0 & Bit 3 of external memory address/data
52	P0.2/AD2	i/o	Bit 2 of port 0 & Bit 2 of external memory address/data
53	P0.1/AD1	i/o	Bit 1 of port 0 & Bit 1 of external memory address/data
54	P0.0/AD0	i/o	Bit 0 of port 0 & Bit 0 of external memory address/data
55	VSS		Digital Ground
56	VDD_3V		Digital Power Supply - 3V
57	VDD		Digital Power Supply
58	ICE_ICP_BUSY	o	Busy signal in ICE or ICP functions. Active low during Flash programming.
59	ICE_ICP_DATA	i/o	Command and data i/o, synchronous to ICE_ICP_Clock, in ICE, or ICP functions.
60	ICE_ICP_CLOCK	i/o	Clock input for ICE, or, ICP functions.
61	ALE	o	Address latch enable
62	RESET	i	Hardware reset input
63	P5.0	i/o	Bit 0 of port 5
64	P5.1	i/o	Bit 1 of port 5

Special Function Registers (SFR)

Address 80h to FFh is the location of CRD89C51RC1T special function registers (SFR). These locations must be accessed by direct addressing mode only.

The following tables show the SFRs, their locations and their initial values. Most of them are identically located and defined as the general 8052 series:

Table 1.1: CRD89C51RC1T SFR location

Add ress	X000	X001	X010	X011	X100	X101	X110	X111	Address
F8	IICS	IICCTL	IICA1	IICA2	IICRWD				FF
F0	B	SPIC1	SPIC2	SPITXD	SPIRXD	SPIS			F7
E8	P4	MD0	MD1	MD2	MD3	MD4	MD5	ARCON	EF
E0	ACC								E7
D8	BRGS								DF
D0	PSW								D7
C8	T2CON		CRCL	CRCH	TL2	TH2			CF
C0	IRCON	CCEN	CCL1	CCH1	CCL2	CCH2	CCL3	CCH3	C7
B8	IEN1	IP1	S0RELH	S1RELH	PWMD0H	PWMD0L	PWMD1H	PWMD1L	BF
B0	P3	PWMD2H	PWMD2L	PWMD3H	PWMD3L	PWMC	WDTC	WDTK	B7
A8	IEN0	IP0	S0RELL	ADCC1	ADCC2	ADCDH	ADCDL	CLKR	AF
A0	P2	PES							A7
98	S0CON	S0BUF	IEN2	S1CON	S1BUF	S1RELL			9F
90	P1	P5	DPS	KBLS	KBE	KBF			97
88	TCON	TMOD	TL0	TL1	TH0	TH1		IFCON	8F
80	P0	SP	DPL	DPH	DPL1	DPH1		PCON	87

Table 1.2 : SFR description and initial value

Register	Location	Initial Value	Description
P0	80h	Ffh	Port 0
SP	81h	07h	Stack Pointer
DPL	82h	00h	Data Pointer 0 Low bvte
DPH	83h	00h	Data Pointer 0 High bvte
DPL1	84h	00h	Data Pointer 1 Low bvte
DPH1	85h	00h	Data Pointer 1 High bvte
PCON	87h	00h	Power control register
TCON	88h	00h	Timer control register
TMOD	89h	00h	Timer Mode

Register	Location	Initial Value	Description
TL0	8Ah	00h	Timer 0 low byte
TL1	8Bh	00h	Timer 1 low byte
TH0	8Ch	00h	Timer 0 high byte
TH1	8Dh	00h	Timer 1 high byte
IFCON	8FH	00h	Interface control register
P1	90h	FFh	Port 1
P5	91h	FFh	Port 5
DPS	92h	00h	Data Pointer select
KBLS	93h	00h	E EI Level Selector Register
KBE	94h	00h	E EI input Enable Register
KBF	95h	00h	E EI Flag register
S0CON	98h	00h	Serial port 0 channel (UART) control register
S0BUF	99h	00h	Serial port 0 channel (UART) data buffer
IEN2	9Ah	00h	Interrupt Enable Register 2
S1CON	9Bh	00h	Serial port 1 control register
S1BUF	9Ch	00h	Serial port 1 data buffer
S1RELL	9Dh	00h	Serial port 1 reload register, low byte
P2	A0h	FFh	Port 2
PES	A1h	00h	Program Memory Page Erase Control Register
IEN0	A8h	00h	Interrupt Enable Register 0
IP0	A9h	00h	Interrupt Priority Register 0
S0RELL	AAh	00h	Serial port 0 reload register, low byte
ADCC1	ABh	00h	ADC control register 1
ADCC2	ACH	00h	ADC control register 2
ADCDH	ADh	00h	ADC high data byte
ADCDL	Aeh	00h	ADC low data byte
CLKR	Afh	00h	Clock range register
P3	B0h	FFh	Port 3
PWMD2H	B1h	00h	PWM channel 2 data high data
PWMD2L	B2h	00h	PWM channel 2 data low data
PWMD3H	B3h	00h	PWM channel 3 data high data
PWMD3L	B4h	00h	PWM channel 3 data low data
PWMC	B5h	00h	PWM control register
WDTC	B6h	00h	Watchdog timer control register
WDTK	B7h	00h	Watchdog timer refresh key

Register	Location	Initial Value	Description
IEN1	B8h	00h	Interrupt Enable Register 1
IP1	B9h	00h	Interrupt Priority Register 1
S0RELH	BAh	00h	Serial port 0 reload register, high byte
S1RELH	BBh	00h	Serial port 1 reload register, high byte
PWMD0H	BCh	00h	PWM channel 0 data high data
PWMD0L	BDh	00h	PWM channel 0 data low data
PWMD1H	BEh	00h	PWM channel 1 data high data
PWMD1L	BFh	00h	PWM channel 1 data low data
IRCON	C0h	00h	Interrupt request control register
CCEN	C1h	00h	Compare/Capture enable register
CCL1	C2h	00h	Compare/Capture register 1 low byte
CCH1	C3h	00h	Compare/Capture register 1 high byte
CCL2	C4h	00h	Compare/Capture register 2 low byte
CCH2	C5h	00h	Compare/Capture register 2 high byte
CCL3	C6h	00h	Compare/Capture register 3 low byte
CCH3	C7h	00h	Compare/Capture register 3 high byte
T2CON	C8h	C0h	Timer 2 control register
CRCL	CAh	00h	Compare/Reload/Capture Register, low byte
CRCH	CBh	00h	Compare/Reload/Capture Register, high byte
TL2	CCh	00h	Timer 2, low byte
TH2	CDh	00h	Timer 2, high byte
PSW	D0h	00h	Program Status Word register
BRGS	D8h	xFh	Baud Rate Generator Switch
ACC	E0h	00h	Accumulator
P4	E8h	FFh	Port 4
MD0	E9h	00h	Multiplication/Division register 0
MD1	EAh	00h	Multiplication/Division register 1
MD2	EBh	00h	Multiplication/Division register 2
MD3	ECh	00h	Multiplication/Division register 3
MD4	EDh	00h	Multiplication/Division register 4
MD5	EEh	00h	Multiplication/Division register 5
ARCON	EFh	00h	Arithmetic Control Register
B	F0h	00h	B register
SPIC1	F1h	08h	SPI Control Register 1
SPIC2	F2h	00h	SPI Control Register 2
SPITxD	F3h	00h	SPI transmit buffer
SPIRxD	F4h	00h	SPI receive buffer

Register	Location	Initial Value	Description
SPIS	F5h	40h	SPI status register
IICS	F8h	00h	IIC status register
IICCTL	F9h	04h	IIC control register
IICA1	FAh	A0h	IIC Address 1 register
IICA2	FBh	60h	IIC Address 2 register
IICRWD	FCh	00h	IIC Read/Write register

Functional Description

1. General Features

CRD89C51RC1T is an 8-bit micro-controller. All of its functions and the detailed meanings of the SFRs will be given in the following sections.

1.1. Embedded Flash

The program can be loaded into the embedded 32KB Flash memory via an external writer, an ICP (In-Circuit Programming) device, or the ISP (In-System Programming) software. The high-quality Flash has a 100K-write cycle life and is suitable for program reloading, data recording, or EEPROM functionality.

1.2. IO Pads

The IO pads are compatible to the 8052 series. P0 is open-drain in the input or output high condition, so an external pull-up resistor is required. P1~P5 are designed with internal pull-up resistors. The IO pad structure is given below:

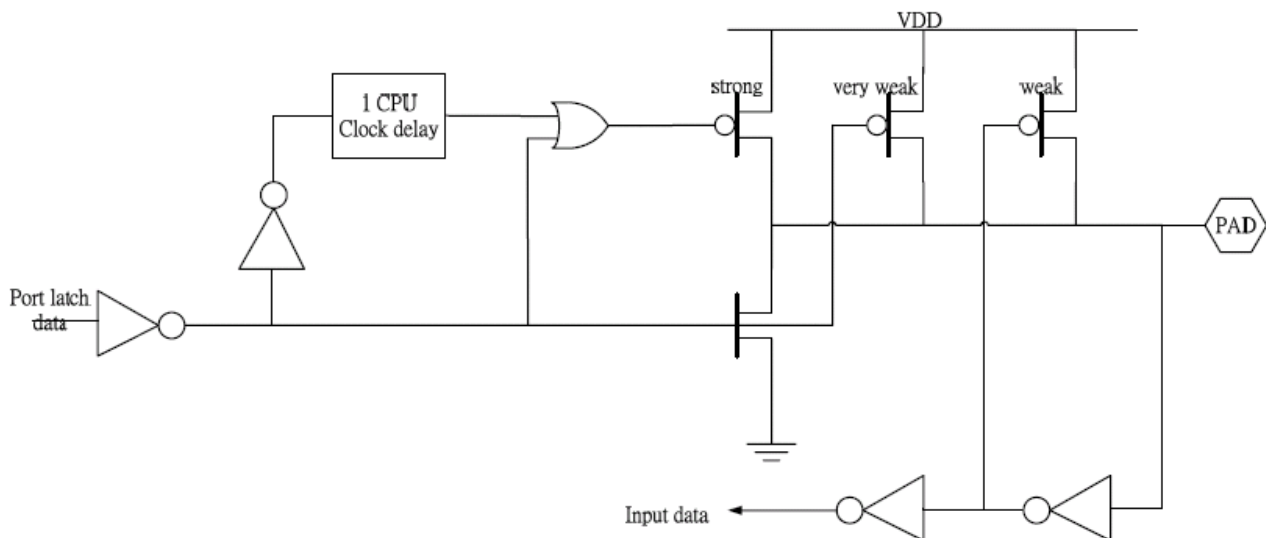


Fig. 1-1 : IO pad structure

All the pads for P0 ~ P4 are slew rate controlled to reduce EMI. Another way to reduce EMI is to disable the ALE output if unused. This is selected by its SFR. The IO pads can withstand 4KV ESD (human body model) guaranteeing the CRD89C51RC1T's performance in high ESD environments.

1.3. 2T/1T Selection

The conventional 8052 series MCUs are 12T, i.e., 12 oscillator clocks are needed for each machine cycle. CRD89C51RC1T is a 2T or 1T MCU, it can execute one instruction within two clocks, or only one clock. The difference between 2T mode and 1T mode is illustrated in Fig. 1-2.



Fig. 1-2(a): The waveform of internal instruction signal in 2T mode



Fig. 1-2(b): The waveform of internal instruction signal in 1T mode

The device defaults to 2T mode, and it can be changed to 1T mode if IFCON [7] (at address 8Fh) is set high. Not every instruction can be executed within one machine cycle. The exact number of machine cycles required for each instruction is given in the next section.

1.4. Reset

The device is reset if a logic 1 pulse is applied to the reset pin for at least 5000ns after power-on. If the watchdog timer is active and is not refreshed in a timely manner, it will also reset the device.

1.5. Clock sources

The clock source of the device may be either external, or internal. The external clock source may be either a crystal connected to pins XTAL1 and XTAL2, or an external oscillator connected to pin XTAL1 only. The internal clock source is the internal oscillator that may be set to run at frequencies ranging from 1MHz to 24MHz. This frequency can be set when programming the device from an external writer. The choice of internal, or external, clock source is also made during this programming phase. The settings are stored within the device in a dedicated area of the flash memory, the information block. This is a 128 byte flash memory, separate from the program memory and accessible only by the device core and only to retrieve its settings.

After a reset, the CRD89C51RC1T defaults to the use of the internal oscillator, running at 1MHz. It then reads the settings stored at the information block and selects the clock source required by the user.

Please, note that the XTAL pins are not 5V tolerant in 3.3V applications, so a 3.3V oscillator source must be used.

The possible clock source selections are provided in table 1-1:

Clock source
external crystal or OSC
24MHz from the internal OSC
20MHz from the internal OSC
16MHz from the internal OSC
12MHz from the internal OSC
8MHz from the internal OSC
4MHz from the internal OSC
2MHz from the internal OSC
1MHz from the internal OSC (default selection during the device initialization process)

Table 1-1 : Selection of clock source

Please, note that there may be a 20% variance in the frequency of the internal oscillator. Its use is not recommended in applications requiring an accurate clock source.

2. Instruction Set

All CRD89C51RC1T instructions are binary code compatible and perform the same functions as they do with the industry standard 8051. The following tables provide a summary of this instruction set. The corresponding mnemonics, descriptions, op codes, program memory bytes and required machine cycles are provided. Each machine cycle, might need one, or two, oscillator clocks, depending on the setting of bit IFCON[7].

Table 2-1 : Arithmetic operations

Mnemonic	Description	Code	Bytes	Cycles
ADD A,Rn	Add register to accumulator	28-2F	1	1
ADD A,direct	Add direct byte to accumulator	25	2	2
ADD A,@Ri	Add indirect RAM to accumulator	26-27	1	2
ADD A,#data	Add immediate data to accumulator	24	2	2
ADDC A,Rn	Add register to accumulator with carry flag	38-3F	1	1
ADDC A,direct	Add direct byte to A with carry flag	35	2	2
ADDC A,@Ri	Add indirect RAM to A with carry flag	36-37	1	2
ADDC A,#data	Add immediate data to A with carry flag	34	2	2
SUBB A,Rn	Subtract register from A with borrow	98-9F	1	1
SUBB A,direct	Subtract direct byte from A with borrow	95	2	2
SUBB A,@Ri	Subtract indirect RAM from A with borrow	96-97	1	2
SUBB A,#data	Subtract immediate data from A with borrow	94	2	2
INC A	Increment accumulator	04	1	1
INC Rn	Increment register	08-0F	1	2
INC direct	Increment direct byte	05	2	3
INC @Ri	Increment indirect RAM	06-07	1	3
INC DPTR	Increment data pointer	A3	1	1
DEC A	Decrement accumulator	14	1	1
DEC Rn	Decrement register	18-1F	1	2
DEC direct	Decrement direct byte	15	2	3
DEC @Ri	Decrement indirect RAM	16-17	1	3
MUL AB	Multiply A and B	A4	1	5
DIV	Divide A by B	84	1	5
DA A	Decimal adjust accumulator	D4	1	1

Table 2-2 : Logic operations

Mnemonic	Description	Code	Bytes	Cycles
ANL A,Rn	AND register to accumulator	58-5F	1	1
ANL A,direct	AND direct byte to accumulator	55	2	2
ANL A,@Ri	AND indirect RAM to accumulator	56-57	1	2
ANL A,#data	AND immediate data to accumulator	54	2	2
ANL direct,A	AND accumulator to direct byte	52	2	3
ANL direct,#data	AND immediate data to direct byte	53	3	4
ORL A,Rn	OR register to accumulator	48-4F	1	1
ORL A,direct	OR direct byte to accumulator	45	2	2
ORL A,@Ri	OR indirect RAM to accumulator	46-47	1	2
ORL A,#data	OR immediate data to accumulator	44	2	2
ORL direct,A	OR accumulator to direct byte	42	2	3
ORL direct,#data	OR immediate data to direct byte	43	3	4
XRL A,Rn	Exclusive OR register to accumulator	68-6F	1	1
XRL A,direct	Exclusive OR direct byte to accumulator	65	2	2
XRL A,@Ri	Exclusive OR indirect RAM to accumulator	66-67	1	2
XRL A,#data	Exclusive OR immediate data to accumulator	64	2	2
XRL direct,A	Exclusive OR accumulator to direct byte	62	2	3
XRL direct,#data	Exclusive OR immediate data to direct byte	63	3	4
CLR A	Clear accumulator	E4	1	1
CPL A	Complement accumulator	F4	1	1
RL A	Rotate accumulator left	23	1	1
RLC A	Rotate accumulator left through carry	33	1	1
RR A	Rotate accumulator right	03	1	1
RRC A	Rotate accumulator right through carry	13	1	1
SWAP A	Swap nibbles within the accumulator	C4	1	1

Table 2-3 : Data transfer

Mnemonic	Description	Code	Bytes	Cycles
MOV A,Rn	Move register to accumulator	E8-EF	1	1
MOV A,direct	Move direct byte to accumulator	E5	2	2
MOV A,@Ri	Move indirect RAM to accumulator	E6-E7	1	2
MOV A,#data	Move immediate data to accumulator	74	2	2
MOV Rn,A	Move accumulator to register	F8-FF	1	2
MOV Rn,direct	Move direct byte to register	A8-AF	2	4
MOV Rn,#data	Move immediate data to register	78-7F	2	2
MOV direct,A	Move accumulator to direct byte	F5	2	3
MOV direct,Rn	Move register to direct byte	88-8F	2	3
MOV direct1,direct2	Move direct byte to direct byte	85	3	4
MOV direct,@Ri	Move indirect RAM to direct byte	86-87	2	4
MOV direct,#data	Move immediate data to direct byte	75	3	3
MOV @Ri,A	Move accumulator to indirect RAM	F6-F7	1	3
MOV @Ri,direct	Move direct byte to indirect RAM	A6-A7	2	5
MOV @Ri,#data	Move immediate data to indirect RAM	76-77	2	3
MOV DPTR,#data16	Load data pointer with a 16-bit constant	90	3	3
MOVC A,@A+DPTR	Move code byte relative to DPTR to accumulator	93	1	3
MOVC A,@A+PC	Move code byte relative to PC to accumulator	83	1	3
MOVX A,@Ri	Move external RAM (8-bit addr.) to A	E2-E3	1	3
MOVX A,@DPTR	Move external RAM (16-bit addr.) to A	E0	1	3
MOVX @Ri,A	Move A to external RAM (8-bit addr.)	F2-F3	1	4
MOVX @DPTR,A	Move A to external RAM (16-bit addr.)	F0	1	4
PUSH direct	Push direct byte onto stack	C0	2	4
POP direct	Pop direct byte from stack	D0	2	3
XCH A,Rn	Exchange register with accumulator	C8-CF	1	2
XCH A,direct	Exchange direct byte with accumulator	C5	2	3
XCH A,@Ri	Exchange indirect RAM with accumulator	C6-C7	1	3
XCHD A,@Ri	Exchange low-order nibble indir. RAM with A	D6-D7	1	3

Table 2-4 : Program branches

Mnemonic	Description	Code	Bytes	Cycles
ACALL addr11	Absolute subroutine call	xxx11	2	6
LCALL addr16	Long subroutine call	12	3	6
RET	from subroutine	22	1	4
RETI	from interrupt	32	1	4
AJMP addr11	Absolute jump	xxx01	2	3
LJMP addr16	Long jump	02	3	4
SJMP rel	Short jump (relative addr.)	80	2	3
JMP @A+DPTR	Jump indirect relative to the DPTR	73	1	2
JZ rel	Jump if accumulator is zero	60	2	3
JNZ rel	Jump if accumulator is not zero	70	2	3
JC rel	Jump if carry flag is set	40	2	3
JNC	Jump if carry flag is not set	50	2	3
JB bit,rel	Jump if direct bit is set	20	3	4
JNB bit,rel	Jump if direct bit is not set	30	3	4
JBC bit,direct rel	Jump if direct bit is set and clear bit	10	3	4
CJNE A,direct rel	Compare direct byte to A and jump if not equal	B5	3	4
CJNE A,#data rel	Compare immediate to A and jump if not equal	B4	3	4
CJNE Rn,#data rel	Compare immed. to reg. and jump if not equal	B8-BF	3	4
CJNE @Ri,#data rel	Compare immediate to indirect and jump if not equal	B6-B7	3	4
DJNZ Rn,rel	Decrement register and jump if not zero	D8-DF	2	3
DJNZ direct,rel	Decrement direct byte and jump if not zero	D5	3	4
NOP	No operation	00	1	1

Table 2-5 : Boolean manipulation

Mnemonic	Description	Code	Bytes	Cycles
CLR C	Clear carry flag	C3	1	1
CLR bit	Clear direct bit	C2	2	3
SETB C	Set carry flag	D3	1	1
SETB bit	Set direct bit	D2	2	3
CPL C	Complement carry flag	B3	1	1
CPL bit	Complement direct bit	B2	2	3
ANL C,bit	AND direct bit to carry flag	82	2	2
ANL C,/bit	AND complement of direct bit to carry	B0	2	2
ORL C,bit	OR direct bit to carry flag	72	2	2
ORL C,/bit	OR complement of direct bit to carry	A0	2	2
MOV C,bit	Move direct bit to carry flag	A2	2	2
MOV bit,C	Move carry flag to direct bit	92	2	3

3. Memory Structure

The CRD89C51RC1T memory structure follows the general 8052 structure. It manipulates operands in three memory spaces. They are (1) 256 bytes standard RAM, (2) 2K bytes auxiliary RAM, and (3) 32K bytes embedded flash as program memory.

3.1. Program Memory

The CRD89C51RC1T has 32KB on-chip flash memory which can be used as general program memory. If there is any byte not used as program memory, it can be used to record data as EEPROM. Guidance on how to do this is provided in section 18.

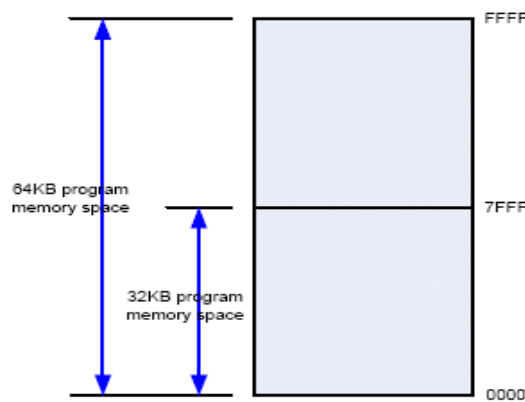


Fig. 3-1: 32K bytes of programmable Flash

3.2. Data Memory

CRD89C51RC1T has 2048 plus 256 Bytes of on-chip SRAM. The 256 bytes are the same as the general 8052 internal memory structure. If bit IFCON[1] = 0, the 2KB on-chip SRAM is enabled and accessed through MOVX instructions. Address range from 0800h to FFFFh is accessed by a standard external memory interface using P2 and P0 for the address/data bus, and P3[7:6] for the read/write signals. If bit IFCON[1] = 1, the internal 2k bytes of RAM are disabled and the whole range of RAM addresses is accessed via the external memory interface. Please note that the external memory interface complies with the standard 12T timing. Figure 3-2 illustrates its operation:

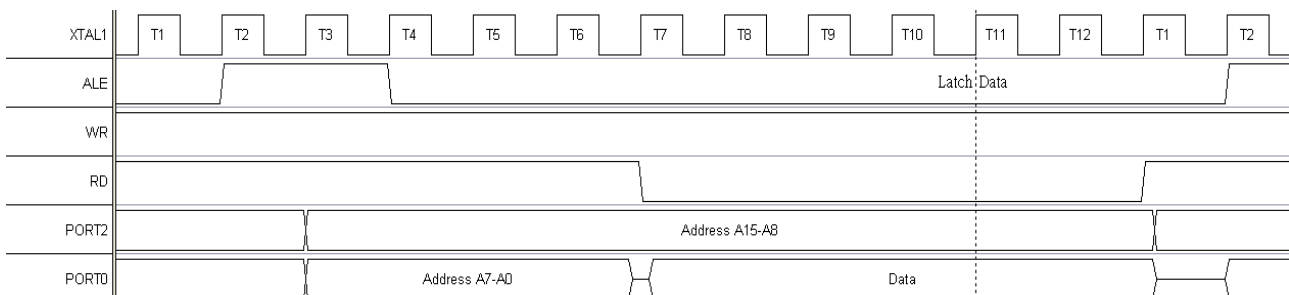


Fig. 3-2(a): External memory access - read

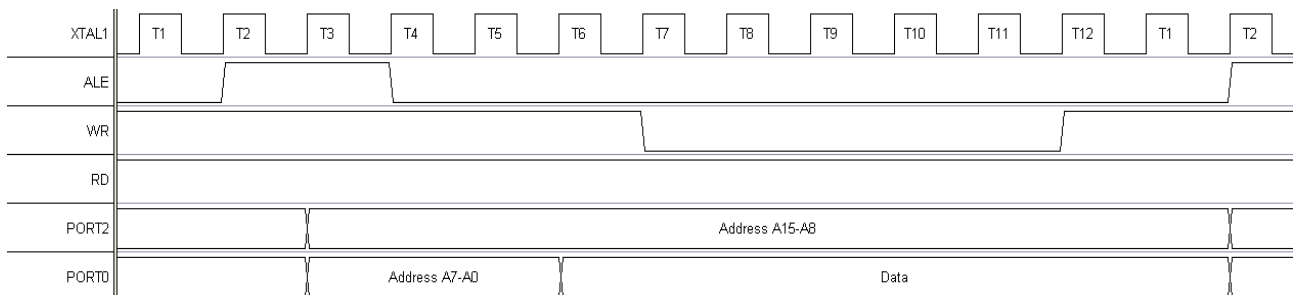


Fig. 3-2(b): External memory access - write



Fig. 3-3: RAM architecture

3.2.1. Data memory - lower 128 byte (00h to 7Fh)

Data Memory 00h to FFh is the same as defined in 8052. Addresses 00h to 7Fh are accessed by both direct and indirect addressing. Addresses 00h to 1Fh is register area. Addresses 20h to 2Fh is memory bit area, and address 30h to 7Fh is for general memory area.

3.2.2. Data memory - higher 128 byte (80h to FFh)

Addresses 80h to FFh are accessed by indirect addressing. It is data area.

3.2.3. Data memory - Expanded 2048 bytes (\$0000 to \$07FF)

External addresses 0000h to 07FFh contain the on-chip expanded SRAM, a total of 2048 Bytes. This memory can be accessed via external direct addressing mode (with MOVX instructions). Accessing addresses outside this range will generate the external memory control signal automatically. If IFCON[2] = 1, the 2KB on-

chip SRAM will be disabled. The default value for IFCON[2] is 0.

4. CPU Engine

The CRD89C51RC1T cpu engine is composed of four components:

- a. Control unit
- b. Arithmetic - logic unit
- c. Memory control unit
- d. RAM and SFR control unit

The CRD89C51RC1T engine fetches instructions from program memory executes them using RAM or SFR. The following paragraphs describe its registers.

Name	Description	Loc	Bit 7	Bit 6	Bit 5	Bit 4	Bit 3	Bit 2	Bit 1	Bit 0	RESET
CPU Core											
ACC	Accumulator	E0h	ACC.7	ACC.6	ACC.5	ACC.4	ACC.3	ACC.2	ACC.1	ACC.0	00H
B	B register	F0h	B.7	B.6	B.5	B.4	B.3	B.2	B.1	B.0	00H
PSW	Program status word	D0h	CY	AC	F0	RS[1:0]		OV	F1	P	00H
SP	Stack Pointer	81h	SP[7:0]								07H
DPL	Data pointer low 0	82h	DPL[7:0]								00H
DPH	Data pointer high 0	83h	DPH[7:0]								00H
DPL1	Data pointer low 1	84h	DPL1[7:0]								00H
DPH1	Data pointer high 1	85h	DPH1[7:0]								00H
DPS	Data pointer select	92h	-	-	-	-	-	-	-	DPS.0	00H
IFCON	Interface control register	8Fh	ITS	-	-	-	ALEC[1:0]		DMEN	-	00H

4.1. Accumulator

The Accumulator register. Most instructions use the Acc to store the operand.

Mnemonic: ACC	Address: E0h
7 6 5 4 3 2 1 0 Reset	
ACC.7	ACC.6
ACC.5	ACC.4
ACC.3	ACC.2
ACC.1	ACC.0
00H	

ACC[7:0]: The A (or ACC) register is the standard 8052 accumulator.

4.2. B Register

The B register is used during multiply and divide instructions. It can also be used as a scratch pad register to store temporary data.

Mnemonic: B	Address: F0h
7 6 5 4 3 2 1 0 Reset	
B.7	B.6
B.5	B.4
B.3	B.2
B.1	B.0
00H	

B[7:0]: The B register serves as a second accumulator.

4.3. Program Status Word

Mnemonic: PSW							Address: D0h	
7	6	5	4	3	2	1	0	Reset
CY	AC	F0	RS[1:0]		OV	F1	P	00H

CY: Carry flag.
AC: Auxiliary Carry flag for BCD operations.
F0: General purpose Flag 0 available for user.
RS[1:0]: Register bank select, used to select working register bank.

RS[1:0]	Bank Selected	Location
00	Bank 0	00H - 07H
01	Bank 1	08H - 0FH
10	Bank 2	10H - 17H
11	Bank 3	18H - 1FH

OV: Overflow flag.
F1: General purpose Flag 1 available for user.
P: Parity flag, affected by hardware to indicate odd/even number of "one" bits in the Accumulator, i.e. even parity.

4.4. Stack Pointer

The stack pointer is a 1-byte register initialized to 07H after reset. This register is incremented before PUSH and CALL instructions, causing the stack to start from location 08H.

Mnemonic: SP							Address: 81h	
7	6	5	4	3	2	1	0	Reset
SP[7:0]								07H

SP[7:0]: The Stack Pointer stores the scratchpad RAM address where the stack begins. It points to the top of the stack.

4.5. Data Pointer

The data pointer (DPTR) is 2-bytes wide. The lower part is DPL, and the highest is DPH. It can be loaded as a 2-byte register (e.g. MOV DPTR,#data16) or as two separate registers (e.g. MOV DPL,#data8). It is generally used to access the external code or data space (e.g. MOVC A,@A+DPTR or MOV A, @DPTR respectively).

Mnemonic: DPL							Address: 82h	
7	6	5	4	3	2	1	0	Reset
DPL[7:0]								00H

DPL[7:0]: Data pointer Low 0

Mnemonic: DPH							Address: 83h	
7	6	5	4	3	2	1	0	Reset
DPH[7:0]								00H

DPH[7:0]: Data pointer High 0

4.6. Data Pointer 1

The dual data pointer accelerates the movement of block data. The standard DPTR is a 16-bit register that is used to address external memory, or peripherals. The standard data pointer is called DPTR and the second data pointer is called DPTR1. The data pointer select bit chooses the active pointer. The data pointer select bit is located in the LSB of DPS register (DPS.0).

The user switches between DPTR and DPTR1 by toggling the LSB of DPS register. All DPTR-related instructions use the currently selected DPTR for any activity.

Mnemonic: DPL1							Address: 84h	
7	6	5	4	3	2	1	0	Reset
DPL1[7:0]								00H

DPL1[7:0]: Data pointer Low 1

Mnemonic: DPH1							Address: 85h	
7	6	5	4	3	2	1	0	Reset
DPH1[7:0]								00H

DPH1[7:0]: Data pointer High 1

Mnemonic: DPS							Address: 92h	
7	6	5	4	3	2	1	0	Reset
-	-	-	-	-	-	-	DPS.0	00H

DPS.0: Data Pointer select register.
DPS.0 = 1 is selected DPTR1.

4.7. Interface control register

Mnemonic: IFCON							Address: 8Fh	
7	6	5	4	3	2	1	0	Reset
ITS	-	-	-	ALEC[1:0]	DMEN	-	-	00H

ITS: Instruction timing select.
ITS = 0, 2T instruction mode.
ITS = 1, 1T instruction mode.

ALEC[1:0]: ALE output control register.

ALEC[1:0]	ALE Output
00	Always output
01	No ALE output
10	Only Read or Write have ALE output
11	reserved

DMEN: Internal 2K SRAM disable.(default is enable)
DMEN = 0, Enable internal 2K RAM.
DMEN = 1, Disable internal 2K RAM.

5. Port0 – Port 5

Port 0 ~ Port 5 are the general purpose IO ports of the device. Most of the ports are multiplexed with other outputs, e.g., Port 3[0] is also used as the RXD pin of the UART. Port0 is open-drain in the input and output high condition, so external pull-up resistors are required. The rest of the ports, provide internal pull-up resistors. Every pin can be assigned to either high, or low, independently as shown below :

Mnemonic	Description	Addr	Bit 7	Bit 6	Bit 5	Bit 4	Bit 3	Bit 2	Bit 1	Bit 0	RESET
Ports											
Port 5	Port 5	91h	P5.7	P5.6	P5.5	P5.4	P5.3	P5.2	P5.1	P5.0	FFH
Port 4	Port 4	E8h	P4.7	P4.6	P4.5	P4.4	P4.3	P4.2	P4.1	P4.0	FFH
Port 3	Port 3	B0h	P3.7	P3.6	P3.5	P3.4	P3.3	P3.2	P3.1	P3.0	FFH
Port 2	Port 2	A0h	P2.7	P2.6	P2.5	P2.4	P2.3	P2.2	P2.1	P2.0	FFH
Port 1	Port 1	90h	P1.7	P1.6	P1.5	P1.4	P1.3	P1.2	P1.1	P1.0	FFH
Port 0	Port 0	80h	P0.7	P0.6	P0.5	P0.4	P0.3	P0.2	P0.1	P0.0	FFH

Mnemonic: P0 Address: 80h

7	6	5	4	3	2	1	0	Reset
P0.7	P0.6	P0.5	P0.4	P0.3	P0.2	P0.1	P0.0	FFH

P0.7~ 0: Port0[7] ~ Port0[0]

Mnemonic: P1 Address: 90h

7	6	5	4	3	2	1	0	Reset
P1.7	P1.6	P1.5	P1.4	P1.3	P1.2	P1.1	P1.0	FFH

P1.7~ 0: Port1[7] ~ Port1[0]

Mnemonic: P20 Address: A0h

7	6	5	4	3	2	1	0	Reset
P2.7	P2.6	P2.5	P2.4	P2.3	P2.2	P2.1	P2.0	FFH

P2.7~ 0: Port2[7] ~ Port2[0]

Mnemonic: P3 Address: B0h

7	6	5	4	3	2	1	0	Reset
P3.7	P3.6	P3.5	P3.4	P3.3	P3.2	P3.1	P3.0	FFH

P3.7~ 0: Port3[7] ~ Port3[0]

Mnemonic: P4 Address: E8h

7	6	5	4	3	2	1	0	Reset
P4.7	P4.6	P4.5	P4.4	P4.3	P4.2	P4.1	P4.0	FFH

P4.7~ 0: Port4[7] ~ Port4[0]

Mnemonic: P5 Address: 91h

7	6	5	4	3	2	1	0	Reset
P5.7	P5.6	P5.5	P5.4	P5.3	P5.2	P5.1	P5.0	FFH

P5.7~ 0: Port5[7] ~ Port5[0]

6. Multiplication Division Unit (MDU)

This on-chip arithmetic unit provides 32-bit division, 16-bit multiplication, shift and normalize features. All operations are unsigned integer operations.

Name	Description	Addr	Bit 7	Bit 6	Bit 5	Bit 4	Bit 3	Bit 2	Bit 1	Bit 0
Multiplication Division Unit										
PCON	Power control	87H	SMOD	MDUF	-	PMW	-	-	STOP	IDLE
ARCON	Arithmetic Control register	EFh	MDEF	MDOV	SLR	SC[4:0]				
MD0	Multiplication/Division Register 0	E9h	MD0[7:0]							
MD1	Multiplication/Division Register 1	EAh	MD1[7:0]							
MD2	Multiplication/Division Register 2	EBh	MD2[7:0]							
MD3	Multiplication/Division Register 3	ECh	MD3[7:0]							
MD4	Multiplication/Division Register 4	EDh	MD4[7:0]							
MD5	Multiplication/Division Register 5	EEh	MD5[7:0]							

6.1. Operation of the MDU

The operation of the MDU consists of three phases:

6.1.1 First phase : loading the MDx registers, x = 0~5 :

The type of calculation the MDU has to perform is selected by the order in which the MDx registers are written to. A write to MD0 is the first transfer to be done in any case. Next writes must be done as shown in the table below to determine the MDU operation. The last write will start the selected operation.

Operation	32bit/16bit	16bit/16bit	16bit x 16bit	shift/normalizing
First write	MD0	MD0	MD0	MD0
	Dividend Low	Dividend Low	Multiplicand Low	LSB
	MD1	MD1	MD4	MD1
	Dividend	Dividend High	Multiplicand Low	MD2
Last write	MD2		MD1	MSB
	Dividend		Multiplicand High	
	MD3			MD3
	Dividend High			MSB
Last write	MD4	MD4		
	Divisor Low	Divisor Low		
	MD5	MD5	MD5	ARCON
	Divisor High	Divisor High	Multiplicand High	start conversion

Table 6-1 : MDU registers write sequence

6.1.2. Second phase :calculation.

During the calculation period, the MDU works in parallel to the CPU. When the calculation is complete, the hardware will set the MDUF bit to one. The flag will be cleared at the next calculation.

Mnemonic: PCON							Address: 87h	
7	6	5	4	3	2	1	0	Reset
SMOD	MDUF	-	PMW	-	-	STOP	IDLE	00H

MDUF: MDU finish flag.

When the MDU calculation is completed, the MDUF will be set by the hardware. It will be cleared by the hardware at the next calculation.

The following table provides the execution time for each mathematical operation.

Table 6-2 MDU execution times

Operation	Number of Tclk
Division 32bit/16bit	17 clock cycles
Division 16bit/16bit	9 clock cycles
Multiplication	11 clock cycles
Shift	min 3 clock cycles, max 18 clock cycles
Normalize	min 4 clock cycles, max 19 clock cycles

6.1.3. Third phase: reading the result from the MDx registers.

The sequence of reading out the MDx registers is not critical. The last read (from MD5 in division operation, or MD3 in multiplication, shift and normalizing) signals the end of the whole calculation.

Table 6-3 : MDU registers read sequence

Operation	32Bit/16Bit	16Bit/16Bit	16Bit x 16Bit	shift/normalizing
First read	MD0	MD0	MD0	MD0
	Quotient Low	Quotient Low	Product Low	LSB
	MD1	MD1	MD1	MD1
	Quotient	Quotient High	Product	
	MD2		MD2	MD2
	Quotient		Product	
	MD3			
Last read	Quotient High	MD4		
	MD4	MD4		
	Remainder Low	Remainder Low		
	MD5	MD5	MD3	MD3
	Remainder High	Remainder High	Product High	MSB

Further explanations of the normalization and shift operations.

In a normalization operation, all leading zeroes in registers MD0 to MD3 are removed with a series of shift left operations. The whole operation is completed when the MSB (most significant bit) of MD3 register contains a '1'. After normalization, bits ARCON.4 (MSB) to ARCON.0 (LSB) contain the number of shift left operations.

In a shift operation, SLR bit (ARCON.5) has to contain the shift direction, and ARCON.4 to ARCON.0 represent the shift count (which must not be 0). During shift, zeroes come into the left, or right, end of the registers MD0, or MD3, respectively.

6.2. Operating registers

The MDU is controlled by seven registers, which are memory mapped as special function registers. The arithmetic unit allows operations concurrently to, and independent of, the CPU's activity.

Operands and results registers are MD0 to MD5, and the control register is ARCON.

Any calculation of the MDU overwrites its operands.

Mnemonic: ARCON							Address: EFh	
7	6	5	4	3	2	1	0	Reset
MDEF	MDOV	SLR	SC[4:0]				00H	

MDEF: Multiplication Division Error Flag.

The MDEF is a read-only error flag. It indicates an improperly performed operation (when one of the arithmetic operations has been restarted or interrupted by a new operation). The error flag mechanism is automatically enabled with the first write to MD0 and disabled with the final read instruction from MD3 (multiplication or shift/normalizing) or MD5 (division) in the third phase.

The error flag is set when:

1. A calculation is in progress and a write access to MDx registers occurs restarting, or interrupting, the calculation.
2. The Error flag mechanism is enabled and a read access to MDx registers occurs (don't cause interrupt calculations)

The error flag is reset only if:

The second phase is finished and a read access to the Mdx registers occurs (arithmetic operation successfully completed).

MDOV: Multiplication Division Overflow flag. The overflow flag is read only.

The overflow flag is set when:

1. division by zero was requested
2. Multiplication with a result greater than 0000FFFFh
3. Start of normalizing if the most significant bit of MD3 is set (MD3.7=1)

The overflow flag is reset when:

Write access to MD0 register (start of the first phase)

SLR: Shift direction bit.

SLR = 0 - shift left operation.

SLR = 1 - shift right operation.

SC[4:0]: Shift counter.

When preset with 00000b, normalizing is selected. After normalized, SC[4:0] contains the number of normalizing shifts performed. When SC[4:0] ≠ 0, shift operation is started. The number of shifts performed is determined by the count written to SC[4:0]. SC[4] is MSB and SC[0] is LSB.

7. Timer 0 and Timer 1

The CRD89C51RC1T has three 16-bit timer/counter registers: Timer 0, Timer 1 and Timer 2. All can be configured for counter, or timer, operations.

In timer mode, Timer 0 register, or Timer 1 register, is incremented every 12 machine cycles, which means that it counts up after every 12 periods of the crystal, or oscillator, signal.

In counter mode, the register is incremented when the falling edge is observed at the corresponding input pin T0 or T1. Since it takes 2 machine cycles to recognize a 1-to-0 event, the maximum input count rate is 1/2 of the oscillator frequency. There are no restrictions on the duty cycle to ensure proper recognition of 0 or 1 state, so an input should be stable for at least 1 machine cycle.

Four operating modes can be selected for Timer 0 and Timer 1. Two SFRs (TMOD and TCON) are used to select the appropriate mode.

Name	Description	Addr.	Bit 7	Bit 6	Bit 5	Bit 4	Bit 3	Bit 2	Bit 1	Bit 0	RESET
Timer 0 and 1											
TL0	Timer 0 low byte	8Ah	TL0[7:0]								00H
TH0	Timer 0 high byte	8Ch	TH0[7:0]								00H
TL1	Timer 1 low byte	8Bh	TL1[7:0]								00H
TH1	Timer 1 high byte	8Dh	TH1[7:0]								00H
TMOD	Timer Mode Control	89h	GATE	C/T	M1	M0	GATE	C/T	M1	M0	00H
TCON	Timer/Counter Control	88h	TF1	TR1	TF0	TR0	IE1	IT1	IE0	IT0	00H

Fig. 7-1. Summary of Timer 0 and Timer 1 registers

7.1. Timer/counter mode control register (TMOD)

Mnemonic: TMOD Address: 89h

7	6	5	4	3	2	1	0	Reset
GATE	C/T	M1	M0	GATE	C/T	M1	M0	00H
Timer 1				Timer 0				

GATE: If set, enables external gate control (pin INT0, or INT1, for Counter 0, or 1, respectively). When INT0, or INT1, is high, and TRx bit is set (see TCON register), a counter is incremented every falling edge on T0 or T1 input pin

C/T: Selects Timer, or Counter, operation. When set to 1, a counter operation is performed, when cleared to 0, the corresponding register will function as a timer.

M[1:0]: Selects mode for Timer/Counter 0, or Timer/Counter 1.

M1	M0	Mode	Function
0	0	Mode 0	13-bit counter/timer, with 5 lower bits in TL0 or TL1 register and 8 bits in TH0 or TH1 register (for Timer 0 and Timer 1, respectively). The 3 high order bits of TL0 and TL1 are hold at zero.
0	1	Mode 1	16-bit counter/timer.
1	0	Mode 2	8-bit auto-reload counter/timer. The reload value is kept in TH0 or TH1, while TL0 or TL1 is incremented every machine cycle. When TLx overflows, a value from THx is copied to TLx.
1	1	Mode 3	If Timer 1 M1 and M0 bits are set to 1, Timer 1 stops. If Timer 0 M1 and M0 bits are set to 1, Timer 0 acts as two independent 8 bit timers / counters.

7.2. Timer/counter control register (TCON)

Mnemonic: TCON Address: 88h

7	6	5	4	3	2	1	0	Reset
TF1	TR1	TF0	TR0	IE1	IT1	IE0	IT0	00H

TF1: Timer 1 overflow flag set by hardware when Timer 1 overflows. It can be cleared by software and is automatically cleared when the interrupt is serviced.

TR1: Timer 1 Run control bit. If cleared, Timer 1 stops.

TF0: Timer 0 overflow flag set by hardware when Timer 0 overflows. It can be cleared by software and is automatically cleared when interrupt is serviced.

TR0: Timer 0 Run control bit. If cleared, Timer 0 stops.

IE1: Interrupt 1 edge flag. Set by hardware, when a falling edge on external pin INT1 is observed. Cleared when interrupt is serviced.

IT1: Interrupt 1 type control bit. Selects falling edge, or low level, on input pin to cause interrupt.

IE0: Interrupt 0 edge flag. Set by hardware, when a falling edge on external pin INT0 is observed. Cleared when interrupt is serviced.

IT0: Interrupt 0 type control bit. Selects falling edge, or low level, on input pin to cause interrupt.

8. Timer 2 and Capture/Compare Unit

Timer 2 is not only a 16-bit timer, but also a 4-channel unit with compare, capture and reload functions. It is very similar to the programmable counter array (PCA) in some other MCUs except pulse width modulation (PWM).

Name	Description	Addr	Bit 7	Bit 6	Bit 5	Bit 4	Bit 3	Bit 2	Bit 1	Bit 0	RESET	
Timer 2 and Capture Compare Unit												
T2CON	Timer 2 control	C8h	T2PS	CC0FR	-	T2R[1:0]		T2CM	T2I[1:0]		00H	
CCEN	Compare/Capture Enable register	C1h	COCAH 3	COCAL 3	COCAH 2	COCAL 2	COCAH 1	COCAL 1	COCAH 0	COCAL 0	00H	
TL2	Timer 2 low byte	CCh	TL2[7:0]									00H
TH2	Timer 2 high byte	CDh	TH2[7:0]									00H
CRCL	Compare/Reload/Capture register low byte	CAh	CRCL[7:0]									00H
CRCH	Compare/Reload/Capture register high byte	CBh	CRCH[7:0]									00H
CCL1	Compare/Capture register 1 low byte	C2h	CCL1[7:0]									00H
CCH1	Compare/Capture register 1 high byte	C3h	CCH1[7:0]									00H
CCL2	Compare/Capture register 2 low byte	C4h	CCL2[7:0]									00H
CCH2	Compare/Capture register 2 high byte	C5h	CCH2[7:0]									00H
CCL3	Compare/Capture register 3 low byte	C6h	CCL3[7:0]									00H
CCH3	Compare/Capture register 3 high byte	C7h	CCH3[7:0]									00H

Fig. 8-1. Summary of Timer 2 and Capture/Compare registers

Mnemonic: T2CON Address: C8h

7	6	5	4	3	2	1	0	Reset
T2PS	CC0FR	-	T2R[1:0]	T2CM	T2I[1:0]	00H		

T2PS: Prescaler select bit:

T2PS = 0 - timer 2 is clocked with 1/12 of the oscillator frequency

T2PS = 1 - timer 2 is clocked with 1/24 of the oscillator frequency

CC0FR: Select active edge:

CC0FR = 0 - falling edge

CC0FR = 1 - rising edge

T2R[1:0]: Timer 2 reload mode selection

T2R[1:0] = 0X - Reload disabled

T2R[1:0] = 10 - Mode 0

T2R[1:0] = 11 - Mode 1

T2CM: Timer 2 Compare mode selection

T2CM = 0 - Mode 0

T2CM = 1 - Mode 1

T2I[1:0]: Timer 2 input selection

T2I[1:0] = 00 - Timer 2 stop

T2I[1:0] = 01 - Input frequency f/12 or f/24

T2I[1:0] = 10 - Timer 2 is incremented by external signal at pin T2

T2I[1:0] = 11 - internal clock input is gated to the Timer 2

Mnemonic: CCEN Address: C1h

7	6	5	4	3	2	1	0	Reset
COCAH	COCAL	COCAH	COCAL	COCAH	COCAL	COCAH	COCAL	00H
3	3	2	2	1	1	0	0	

COCAH3,COCAL3: Compare/capture mode for Channel 3.

COCAH3	COCAL3	Function
0	0	Compare/capture disable
0	1	Capture on rising edge at pin CC3
1	0	Compare enable
1	1	Capture on write operation into register CCL3

COCAH2,COCAL2: Compare/Capture mode for Channel 2.

COCAH2	COCAL2	Function
0	0	Compare/capture disable
0	1	Capture on rising edge at pin CC2
1	0	Compare enable
1	1	Capture on write operation into register CCL2

COCAH1,COCAL1: Compare/Capture mode for Channel 1.

COCAH1	COCAL1	Function
0	0	Compare/capture disable
0	1	Capture on rising edge at pin CC1
1	0	Compare enable
1	1	Capture on write operation into register CCL1

COCAH0,COCAL0: Compare/Capture mode for CRC register (Channel 0)

COCAH0	COCAL0	Function
0	0	Compare/capture disable
0	1	Capture on falling/rising edge at pin CC0
1	0	Compare enable
1	1	Capture on write operation into register CRCL

8.1. Timer 2 function

Timer 2 can operate as timer, event counter, or gated timer as explained later.

8.1.1. Timer mode

In this mode Timer 2 can be incremented in every 12 machine cycles, or in every 24 machine cycles, depending on the 2:1 prescaler. The prescaler is selected by bit T2PS in register T2CON.

8.1.2. Event counter mode

In this mode, the timer is incremented when external signal T2 change value from 1 to 0. The T2 input is sampled in every cycle. Timer 2 is incremented in the cycle following the one in which the transition was detected.

8.1.3. Gated timer mode

In this mode, the internal clock which increments timer 2 is gated by external signal T2.

8.1.4. Reload of Timer 2

Reload (16-bit reload from the crc register) can be executed in the following two modes:

Mode 0: Reload signal is generated by a Timer 2 overflows - auto reload

Mode 1: Reload signal is generated by a negative transition at the corresponding input pin T2EX.

8.2. Compare function

In the four independent comparators, the value stored in any compare/capture register is compared with the contents of the timer register. The compare modes 0 and 1 are selected by bit T2CM. In both compare modes, the results of comparison arrives at Port 1 within the same machine cycle in which the internal compare signal is activated. The port pins P1.2 to P1.5 are the outputs of CC0 to CC3.

8.2.1. Compare Mode 0

In mode 0, when the value in Timer 2 equals the value of the compare register, the output signal changes from low to high. It goes back to a low level on timer overflow. In this mode, writing to the port will have no effect, because the input line from the internal bus and the write-to-latch line are disconnected. The following figure illustrates the function of compare mode 0.

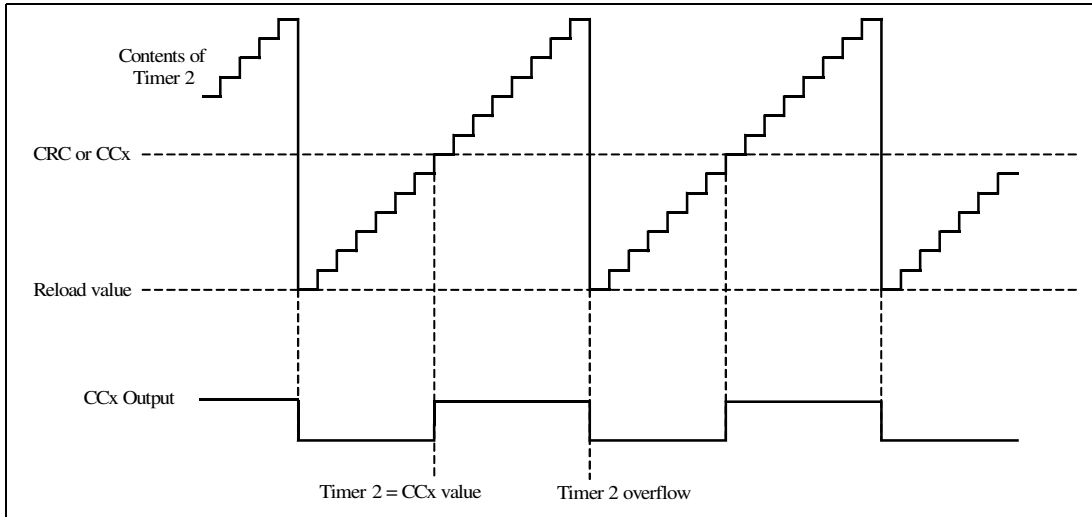


Fig 8-2 : Compare mode 0 function

8.2.2. Compare Mode 1

In compare mode 1, the transition of the output signal can be determined by software. A timer 2 overflow causes no output change. In this mode, both transitions of a signal can be controlled. Figure 8-2 shows a functional diagram of a register/port configuration in compare Mode 1. In compare Mode 1, the value is written first to the "Shadow Register", when compare signal is active, this value is transferred to the output register.

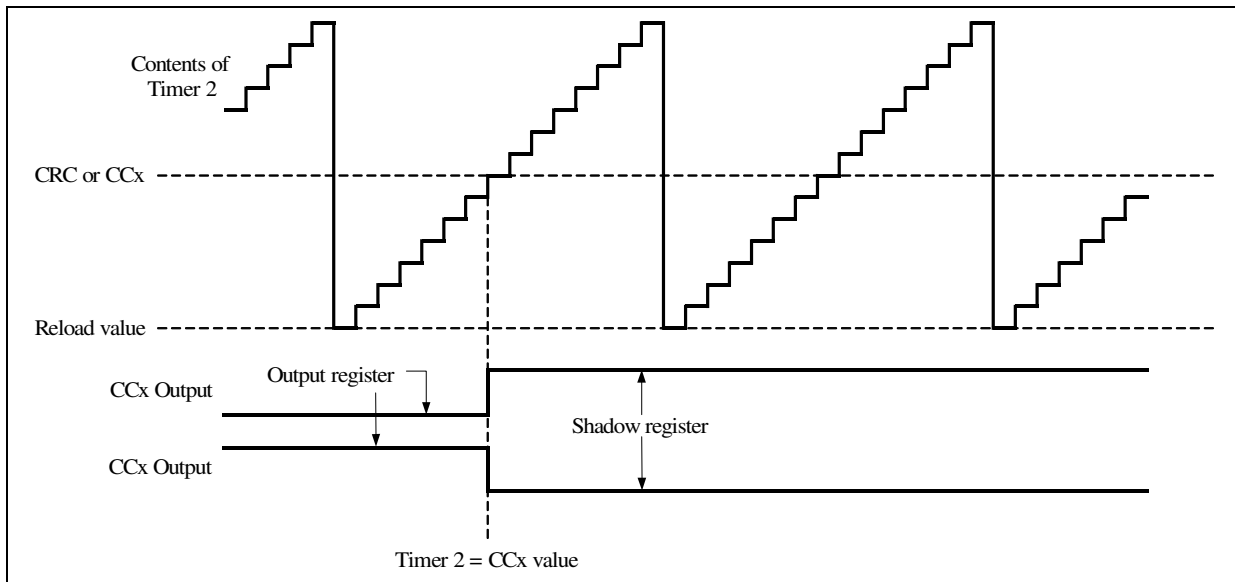


Fig 8-3 : Compare mode 1 function

8.3. Capture function

Actual timer/counter contents can be saved into registers Ccx, or CRC, upon an external event (mode 0), or a software write operation (mode 1).

8.3.1. Capture Mode 0

In mode 0, value capture of Timer 2 is executed when:

(a) rising edge on input CC1-CC3

(b) rising, or falling, edge on input CC0 (depending on bit CC0FR)

The contents of Timer 2 will be latched into the appropriate capture register. In this mode, no interrupt request will be generated.

8.3.2. Capture Mode 1

In mode 1, value capture of timer 2 is caused by writing any value into the low-order byte of the dedicated capture register. The value written to the capture register is irrelevant to this function. The contents of Timer 2 will be latched into the appropriate capture register. In this mode, no interrupt request will be generated.

9. Serial interface 0 and 1

There are two serial interfaces for data communication in the CRD89C51RC1T, UART0 and UART1. As the conventional UART, the communication speed can be selected by configuring the baud rate in SFRs. These two serial buffers consist of two separate registers, a transmit buffer and a receive buffer. Writing data to the SFR SOBUF, or S1BUF, transfers the data to the serial output buffer and starts the transmission. Reading from the SOBUF, or S1BUF, reads data from the serial receive buffer. Each serial port can simultaneously transmit and receive data. It can also buffer 1 byte at receive, which prevents the receive data from being lost if the CPU reads the second byte before the transmission of the first byte is completed.

Name	Description	Address	Bit 7	Bit 6	Bit 5	Bit 4	Bit 3	Bit 2	Bit 1	Bit 0	RESET
Serial interface 0 and 1											
PCON	Power control	87H	SMOD	MDUF	-	PMW	-	-	STOP	IDLE	00H
BRGS	Baud rate generator switch	D8H	BRS	-	-	-	-	-	-	-	00H
SOCON	Serial Port 0 control register	98H	SM0	SM1	SM20	REN0	TB80	RB80	TI0	RI0	00H
SORELL	Serial Port 0 reload register low byte	AAH	SOREL .7	SOREL .6	SOREL .5	SOREL .4	SOREL .3	SOREL .2	SOREL .1	SOREL .0	00H
SORELH	Serial Port 0 reload register high byte	BAH	-	-	-	-	-	-	SOREL .9	SOREL .8	00H
SOBUF	Serial Port 0 data buffer	99H	SOBUF [7:0]								00H
S1CON	Serial Port 1 control register	9BH	SM	-	SM21	REN1	TB81	RB81	TI1	RI1	00H
S1RELL	Serial Port 1 reload register low byte	9DH	S1REL .7	S1REL .6	S1REL .5	S1REL .4	S1REL .3	S1REL .2	S1REL .1	S1REL .0	00H
S1RELH	Serial Port 1 reload register high byte	BBH	-	-	-	-	-	-	S1REL .9	S1REL .8	00H
S1BUF	Serial Port 1 data buffer	9CH	S1BUF [7:0]								00H

Fig 9-1 : Summary of Serial interface registers

Mnemonic: S0CON							Address: 98h	
7	6	5	4	3	2	1	0	Reset
SM0	SM1	SM20	REN0	TB80	RB80	TI0	RI0	00H

SM0, SM1: Serial Port 0 mode selection.

SM1	SM0	Mode
0	0	0
0	1	1
1	0	2
1	1	3

The 4 modes in UART0, Mode 0 ~ 3, are explained later.

SM20: Enables multiprocessor communication feature

REN0: If set, enables serial reception. Cleared by software to disable reception.

TB80: The 9th transmitted data bit in modes 2 and 3. Set or cleared by the CPU depending on the function it performs such as parity check, multiprocessor communication etc.

RB80: In modes 2 and 3, it is the 9th data bit received. In mode 1, if SM20 is 0, RB80 is the stop bit. In mode 0, this bit is not used. Must be cleared by software.

TI0: Transmit interrupt flag, set by hardware after completion of a serial transfer. Must be cleared by software.

RI0: Receive interrupt flag, set by hardware after completion of a serial reception. Must be cleared by software.

Mnemonic: S1CON							Address: 9Bh	
7	6	5	4	3	2	1	0	Reset
SM	-	SM21	REN1	TB81	RB81	TI1	RI1	00H

SM: Serial Port 1 mode select.

SM0	Mode
0	A
1	B

The 2 modes in UART1, Mode A and Mode B, are explained later.

SM21: Enables multiprocessor communication feature.

REN1: If set, enables serial reception. Cleared by software to disable reception.

TB81: The 9th transmitted data bit in mode A. Set or cleared by the CPU depending on the function it performs such as parity check, multiprocessor communication etc.

RB81: In mode A, it is the 9th data bit received. In mode B, if SM21 is 0, RB81 is the stop bit. Must be cleared by software.

TI1: Transmit interrupt flag, set by hardware after completion of a serial transfer. Must be cleared by software.

RI1: Receive interrupt flag, set by hardware after completion of a serial reception. Must be cleared by software.

9.1. Serial interface 0

The Serial Interface 0 can operate in the following 4 modes:

SM1	SM0	Mode	Description	Board Rate
0	0	0	Shift register	Fosc/12
0	1	1	8-bit UART	Variable
1	0	2	9-bit UART	Fosc/32 or Fosc/64
1	1	3	9-bit UART	Variable

here Fosc is the crystal, or oscillator, frequency.

9.1.1. Mode 0

Pin RXD0 serves as input and output. TXD0 outputs the shift clock. 8 bits are transmitted with LSB first. The baud rate is fixed at 1/12 of the crystal frequency. Reception is initialized in Mode 0 by setting the flags in S0CON as follows: RI0 = 0 and REN0 = 1. In the other modes, a start bit when REN0 = 1 starts receiving serial data.

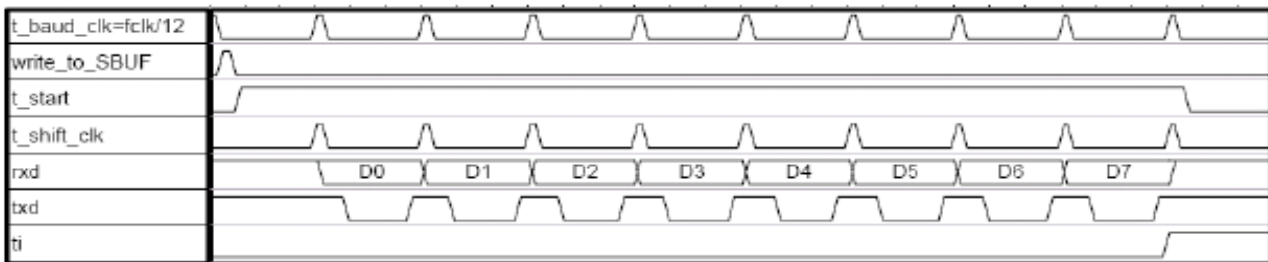


Fig. 9-2 : Transmit mode 0 for Serial 0

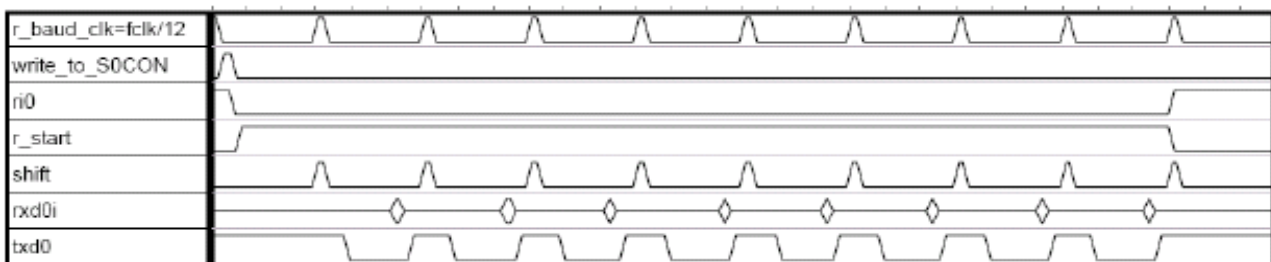


Fig. 9-3 : Receive mode 0 for Serial 0

9.1.2. Mode 1

Pin RXD0 serves as serial input, and TXD0 serves as serial output. No external shift clock is used, 10 bits are transmitted: a start bit (always 0), 8 data bits (LSB first), and a stop bit (always 1). On receive, a start bit synchronizes the transmission, 8 data bits are available by reading S0BUF, and a stop bit sets the flag RB80 in the SFRS0CON. In mode 1, either internal baud rate generator, or timer 1, can be used to set the desired baud rate.

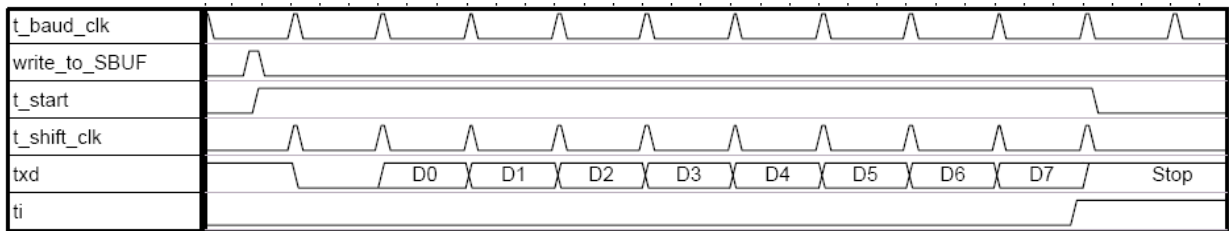


Fig. 9-4 : Transmit mode 1 for Serial 0

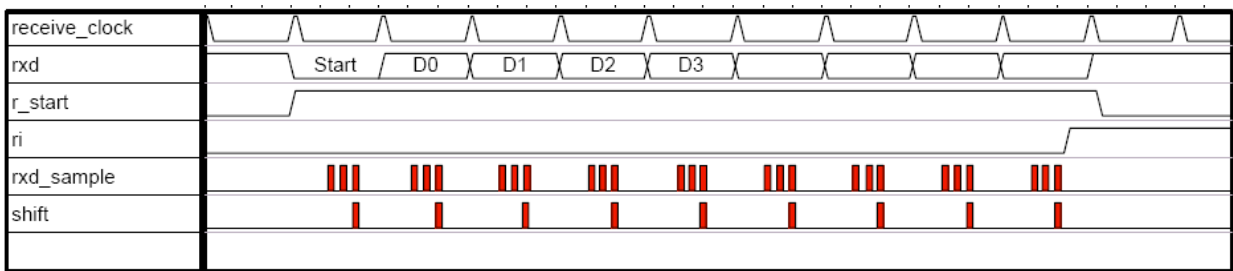


Fig. 9-5 : Receive mode 1 for Serial 0

9.1.3. Mode 2

This mode is similar to Mode 1, but with two differences. The baud rate is fixed at 1/32 (SMOD=1), or 1/64 (SMOD=0), of oscillator frequency, and 11 bits are transmitted, or received: a start bit (0), 8 data bits (LSB first), a programmable Bit 9, and a stop bit (1). Bit 9 can be used to control the parity of the serial interface: at transmission, bit TB80 in S0CON is output as Bit 9, and at receive, Bit 9 affects RB80 in SFR S0CON.

9.1.4. Mode 3

The only difference between Mode 2 and Mode 3 is that, in Mode 3, either internal baud rate generator, or timer 1, can be used to specify baud rate.

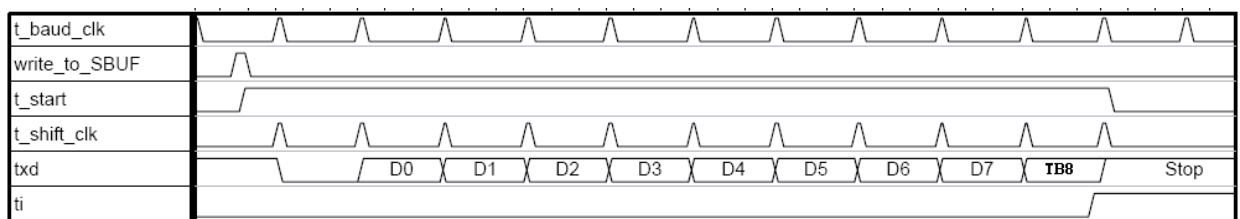


Fig. 9-6 : Transmit modes 2 and 3 for Serial 0

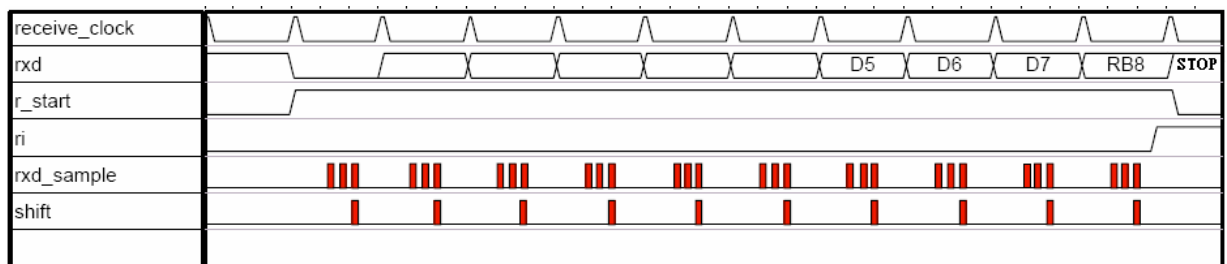


Fig. 9-7 : Receive modes 2 and 3 for Serial 0

9.2. Serial interface 1

Serial Interface 1 can operate in the following 2 modes:

SM	Mode	Description	Baud Rate
0	A	9-bit UART	Variable
1	B	8-bit UART	Variable

9.2.1. Mode A

This mode is similar to Mode 2 and 3 of Serial interface 0, 11 bits are transmitted or received: a start bit (0), 8 data bits (LSB first), a programmable Bit 9, and a stop bit (1). Bit 9 can be used to control the parity of the serial interface: at transmission, bit TB81 in S1CON is output as Bit 9, and at receive, Bit 9 affects RB81 in SFR S1CON.

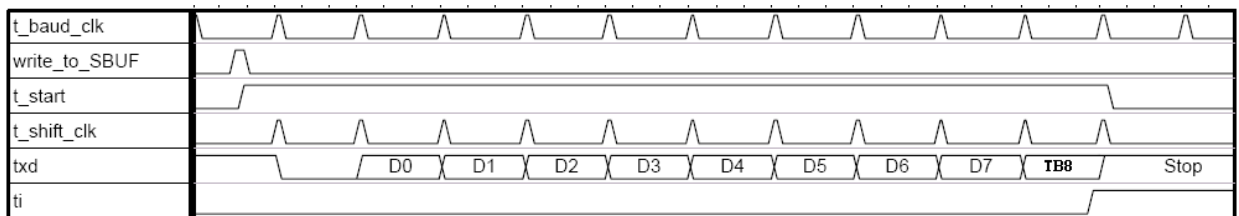


Fig. 9-8 : Transmit mode A for Serial 1

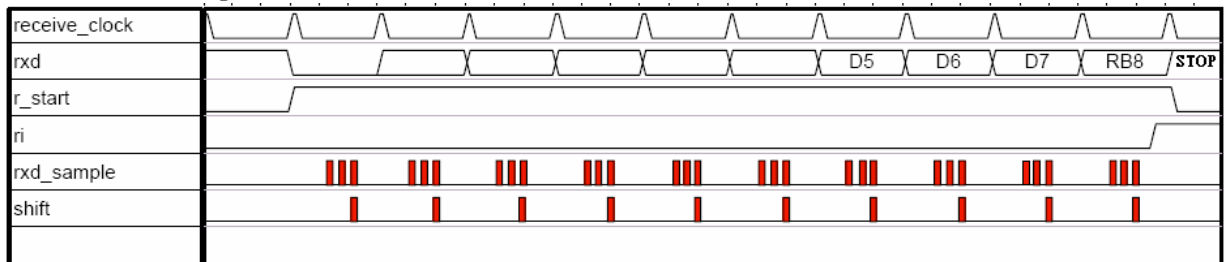


Fig. 9-9 : Receive mode A for Serial 1

9.2.2. Mode B

Mode B similar to Mode 1 of Serial interface 0. Pin RXD1 serves as input, and TXD1 serves as serial output. No external shift clock is used. 10 bits are transmitted: a start bit (always 0), 8 data bits (LSB first), and a stop bit (always 1). On receive, a start bit synchronizes the transmission, 8 data bits are available by reading S1BUF, and stop bit sets the flag RB81 in S1CON. In mode B, the internal baud rate generator is used to set the baud rate.

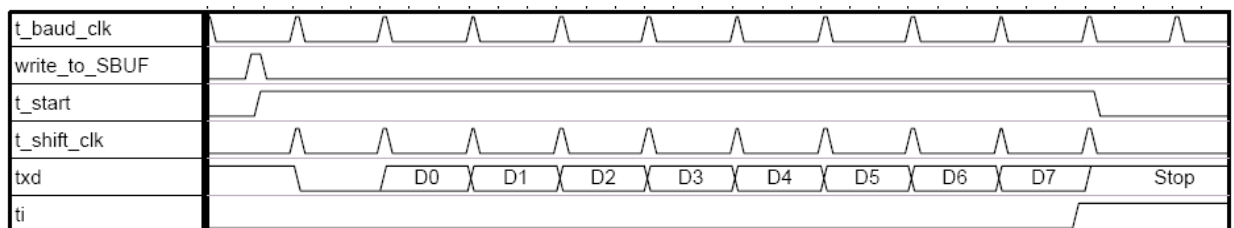


Fig. 9-10 : Transmit mode B for Serial 1

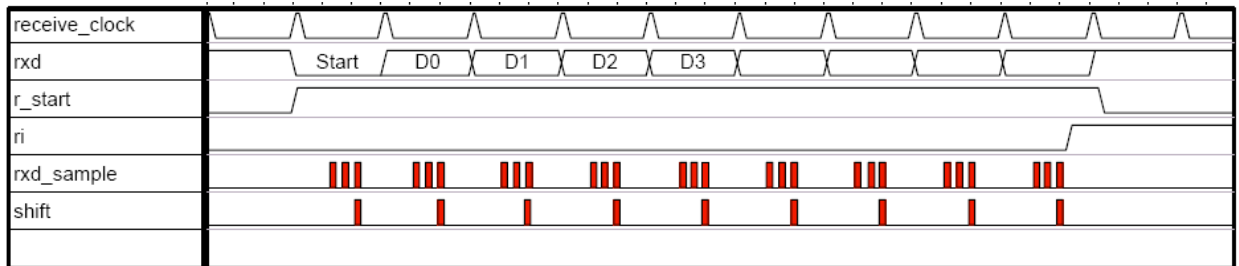


Fig. 9-11 : Receive mode B for Serial 1

9.3. Multiprocessor communication of Serial Interface 0 and 1

The feature of receiving 9 bits in Modes 2 and 3 of Serial Interface 0, or in Mode A of Serial Interface 1, can be used for multiprocessor communication. In this case, the slave processors have bit SM20 in S0CON, or SM21 in S1CON, set to 1. When the master processor outputs the slave's address, it sets Bit 9 to 1, causing a serial port receive interrupt in all the slaves. The slave processors compare the received byte with their network address. If matched, the addressed slave will clear SM20, or SM21, and receive the rest of the message, while other slaves will leave SM20 or SM21 bit unaffected and ignore this message. After addressing the slave, the host will output the rest of the message with Bit 9 set to 0, so no serial port receive interrupt will be generated in unselected slaves.

9.4. Baud rate generator

9.4.1. Serial interface 0, modes 1 and 3

(a) When BRS = 0 (in SFR BRGS):

$$\text{Baud Rate} = \frac{2^{\text{SMOD}} \times F_{\text{OSC}}}{32 \times 12 \times (256 \times \text{TH1})}$$

(b) When BRS = 1 (in SFR BRGS):

$$\text{Baud Rate} = \frac{2^{\text{SMOD}} \times F_{\text{OSC}}}{64 \times (2^{10} - \text{S0REL})}$$

9.4.2. Serial interface 1 modes, A and B

$$\text{Baud Rate} = \frac{F_{\text{OSC}}}{32 \times (2^{10} - \text{S1REL})}$$

9.5. Clock source for baud rate generation

It is not recommended to use the internal OSC as the clock source when the serial interface functions are used. The reason is that the baud rate in the previous section must be as accurate as possible. The internal OSC clock frequency may be varied with $\pm 10\%$. So the user can choose the clock source from an external crystal, or oscillator.

10. Watchdog timer

The watchdog timer is an 8-bit counter that is incremented once every WDTCLK clock cycles. After an external reset, the watchdog timer is disabled and all registers are set to zeros.

During the initialization period, the device reads the WDTENB and WDTM[3:0] bits from the information block. WDTENB is the disable bit. When this bit is high, the watchdog function will be disabled. WDTM[3:0] determine the frequency division for WDTCLK as shown in the figure below. WDTENB and WDTM[3:0] are set through the external writer during the programming phase.

$$\text{WDTCLK} = \frac{\text{Fosc}}{2^{\text{WDTM}}}$$

$$\text{Watchdog reset time} = \frac{256}{\text{WDTCLK}}$$

Once the watchdog is started it cannot be stopped. User can refreshed the watchdog timer to zero when WDTK register is written by 55h.

When Watchdog timer overflows, the WDTF flag is set to one and automatically resets the device. The WDTF flag can be cleared by software, or external reset.

The watchdog timer must be refreshed regularly to prevent it from resetting the device.

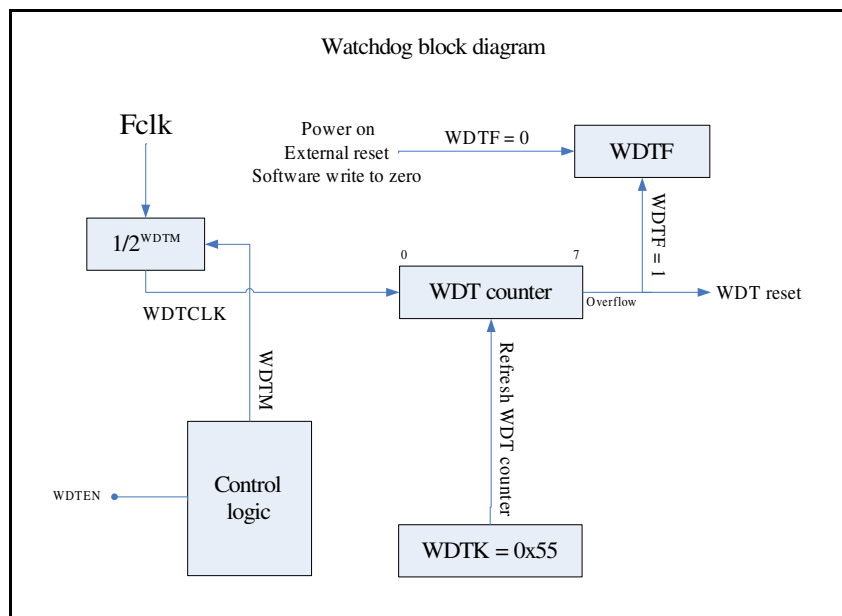


Fig. 10-1 : Watchdog timer block diagram

Name	Description	Address	Bit 7	Bit 6	Bit 5	Bit 4	Bit 3	Bit 2	Bit 1	Bit 0	RESET
Watchdog Timer											
WDTC	Watchdog timer control register	B6h	WDTF	-	-	-	-	-	-	-	00H
WDTK	Watchdog timer refresh key	B7h	WDTK[7:0]								00H

Mnemonic: WDTC Address: B6h

7	6	5	4	3	2	1	0	Reset
WDTF	-	-	-	-	-	-	-	00H

WDTF: Watchdog timer reset flag.

After a watchdog reset, the WDTF flag will be set to one by the hardware. This flag is cleared by software, or external reset.

Mnemonic: WDTK Address: B7h

7	6	5	4	3	2	1	0	Reset
WDTK[7:0]								00H

WDTK: Watchdog timer refresh key.

A programmer must write 0x55 into WDTK register, then the watchdog timer will be cleared to zero.

11. Interrupts

CRD89C51RC1T provides 11 interrupt sources with four priority levels. Each source has its own request flag located in a SFR. Each interrupt requested by the corresponding flag can be enabled, or disabled, individually by the enable bits in SFR's IEN0, IEN1, and IEN2.

When an interrupt is requested, the processor will vector to the predetermined address as shown in Table 11.1. Once interrupt servicing has begun, it can be interrupted only by a higher priority interrupt. The interrupt service is terminated by a return from instruction RETI. When a RETI is performed, the processor will return to the instruction that would have been the next instruction when the interrupt occurred.

When the interrupt condition occurs, the processor will also indicate this by setting a flag bit. This bit is set regardless of whether the interrupt is enabled, or disabled. Each interrupt flag is sampled once per machine cycle, then samples are polled by hardware. If the sample indicates a pending interrupt when the interrupt is enabled, then interrupt request flag is set. On the next instruction cycle, the interrupt will be acknowledged by hardware, forcing an LCALL to appropriate vector address.

Interrupt response will require a varying amount of time depending on the state of the processor when the interrupt occurs. If the processor is performing an interrupt service with equal, or greater, priority, the new interrupt will not be invoked. In other cases, the response time depends on the instruction currently being executed. The fastest possible response to an interrupt is 7 machine cycles. This includes one machine cycle to detect the interrupt and six cycles to perform the LCALL.

Interrupt Request Flags	Interrupt Vector Address
IE0 - External interrupt 0	0003h
TF0 - Timer 0 interrupt	000Bh
IE1 - External interrupt 1	0013h
TF1 - Timer 1 interrupt	001Bh
RI0/TI0 - Serial channel 0 interrupt	0023h
TF2/EXF2 - Timer 2 interrupt	002Bh
SPIIF - SPI interrupt	004Bh
ADCIF - A/D converter interrupt	0053h
EIIF - Expanded External Interface interrupt	005Bh
IICIF - IIC interrupt	006Bh
RI1/TI1 - Serial channel 1 interrupt	0083h

Table 11-1 : Interrupt vectors

Name	Description	Address	Bit 7	Bit 6	Bit 5	Bit 4	Bit 3	Bit 2	Bit 1	Bit 0	RESET
Interrupt											
IEN0	Interrupt Enable 0 register	A8H	EA	-	ET2	ES0	ET1	EX1	ET0	EX0	00H
IEN1	Interrupt Enable 1 register	B8H	EXEN2	-	IEIIC	-	IEEEI	IEADC	IESPI	-	00H
IEN2	Interrupt Enable 2 register	9AH	-	-	-	-	-	-	-	ES1	00H
IP0	Interrupt priority level 0	A9H	-	-	IP0.5	IP0.4	IP0.3	IP0.2	IP0.1	IP0.0	00H
IP1	Interrupt priority level 1	B9H	-	-	IP1.5	IP1.4	IP1.3	IP1.2	IP1.1	IP1.0	00H

Table 11-2: Summary of interrupt-related registers

Interrupt Enable 0 register(IEN0)

Mnemonic: IEN0

Address: A8h

7	6	5	4	3	2	1	0	Reset
EA	-	ET2	ES0	ET1	EX1	ET0	EX0	00H

EA: EA = 0 : disable all interrupt.
EA = 1 : enable all interrupt.

ET2: ET2 = 0 : disable Timer 2 overflow or external reload interrupt.
ES0: ES0 = 0 : disable Serial channel 0 interrupt.
ET1: ET1 = 0 : disable Timer 1 overflow interrupt.
EX1: EX1 = 0 : disable external interrupt 1.
ET0: ET0 = 0 : disable Timer 0 overflow interrupt.
EX0: EX0 = 0 : disable external interrupt 0.

Interrupt Enable 1 register(IEN1)

Mnemonic: IEN1

Address: B8h

7	6	5	4	3	2	1	0	Reset
EXEN2	-	IEIIC	-	IEKBI	IEADC	IESPI		00H

EXEN2: Timer 2 reload interrupt enable
EXEN2 = 0 : disable Timer 2 external reload interrupt.
IEIIC: IIC interrupt enable.
IEIICS = 0 : disable IIC interrupt.
IEEEI: EEI interrupt enable
IEEEI = 0 : disable EEI interrupt
IEADC: A/D converter interrupt enable
IEADC = 0 : disable ADC interrupt.
IESPI: SPI interrupt enable.
IESPI = 0 : disable SPI interrupt.

Interrupt Enable 2 register(IEN2)

Mnemonic: IE2

Address: 9Ah

7	6	5	4	3	2	1	0	Reset
-	-	-	-	-	-	-	ES1	00H

ES1: ES1=0 - Disable Serial channel 1 interrupt.

Interrupt request register (IRCON)

Mnemonic: IRCON							Address: C0h	
7	6	5	4	3	2	1	0	Reset
EXF2	TF2	IICIF	-	EEIIF	ADCIF	SPIIF		00H

EXF2: Timer 2 external reload flag, must be cleared by software.

TF2: Timer 2 overflow flag, must be cleared by software.

IICIF: IIC interrupt flag, must be cleared by software after RxIF and TxIF at IICS register, are cleared by software.

EEIIF: EEI interrupt flag, must be cleared by software.

ADCIF: A/D converter interrupt flag, must be cleared by software

SPIIF: SPI interrupt flag, must be cleared by software.

11.1. Priority level structure

All interrupt sources are combined in groups:

Table 11-3 Priority level groups

Groups		
External interrupt 0	Serial channel 1 interrupt	-
Timer 0 interrupt	-	SPI interrupt
External interrupt 1	-	ADC interrupt
Timer 1 interrupt	-	EEI interrupt
Serial channel 0 interrupt	-	-
Timer 2 interrupt	-	IIC interrupt

Each group of interrupt sources can be programmed individually to one of the four priority levels by setting, or clearing, one bit in SFRs IP0 and IP1. If requests of the same priority level are received simultaneously, an internal polling sequence determines which request is serviced first.

Mnemonic: IP0							Address: A9h	
7	6	5	4	3	2	1	0	Reset
-	-	IP0.5	IP0.4	IP0.3	IP0.2	IP0.1	IP0.0	00H

Mnemonic: IP1							Address: B9h	
7	6	5	4	3	2	1	0	Reset
-	-	IP1.5	IP1.4	IP1.3	IP1.2	IP1.1	IP1.0	00H


Table 11-4 Priority levels

IP1.x	IP0.x	Priority Level
0	0	Level0 (lowest)
0	1	Level1
1	0	Level2
1	1	Level3 (highest)

Table 11.4 Groups of priority

Bit	Group		
IP1.0, IP0.0	External interrupt 0	Serial channel 1 interrupt	-
IP1.1, IP0.1	Timer 0 interrupt	-	ADC interrupt
IP1.2, IP0.2	External interrupt 1	-	SPI interrupt
IP1.3, IP0.3	Timer 1 interrupt	-	EEI interrupt
IP1.4, IP0.4	Serial channel 0 interrupt	-	-
IP1.5, IP0.5	Timer 2 interrupt	-	IIC interrupt

Table 11.5 Polling sequence

Interrupt source	Sequence
External interrupt 0	
Serial channel 1 interrupt	
Timer 0 interrupt	
SPI interrupt	
External interrupt 1	
ADC interrupt	
Timer 1 interrupt	
E EI interrupt	
Serial channel 0 interrupt	
Timer 2 interrupt	
IIC interrupt	

12. Power Management Unit

There are two power management modes, IDLE mode and STOP mode.

Mnemonic: PCON							Address: 87h	
7	6	5	4	3	2	1	0	Reset
SMOD	MDUF	-	PMW	-	-	STOP	IDLE	00H

STOP: Stop mode control bit. Setting this bit turning on the Stop Mode.
Stop bit is always read as 0

IDLE: Idle mode control bit. Setting this bit turning on the Idle Mode.
Idle bit is always read as 0

12.1 Idle mode

Setting the IDLE bit of PCON register invokes the IDLE mode. During IDLE mode, program execution is halted, leaving timers, serial ports and other clock sources running. The CPU will exit idle mode when either an interrupt, or a reset, occurs. Power consumption drops because the CPU is not active.

12.2 Stop mode

Setting the STOP bit of PCON register invokes the STOP mode. During STOP mode, program execution is halted and all internal clocks are turned off. The CPU will exit this state from a non-clocked external interrupt, or a reset condition. Internally generated interrupts (timer, serial port, watchdog ...) are not useful since they require the system clock to be active.

13. Pulse Width Modulation (PWM)

CRD89C51RC1T provides four PWM output channels. They have a common frequency setting, but individual enable bits and data registers.

Name	Description	Addr	Bit 7	Bit 6	Bit 5	Bit 4	Bit 3	Bit 2	Bit 1	Bit 0	RESET
PWM											
PWMC	PWM Control register	B5h	-	-	PWMM[1:0]		PWM3EN	PWM2EN	PWM1EN	PWM0EN	00H
PWMD0H	PWM 0 Data register high byte	BCh	-	-	-	-	PWMD0[11:8]				00H
PWMD0L	PWM 0 Data register low byte	BDh	PWMD0[7:0]								00H
PWMD1H	PWM 1 Data register high byte	BEh	-	-	-	-	PWMD1[11:8]				00H
PWMD1L	PWM 1 Data register low byte	BFh	PWMD1[7:0]								00H
PWMD2H	PWM 2 Data register high byte	B1h	-	-	-	-	PWMD2[11:8]				00H
PWMD2L	PWM 2 Data register low byte	B2h	PWMD2[7:0]								00H
PWMD3H	PWM 3 Data register high byte	B3h	-	-	-	-	PWMD3[11:8]				00H
PWMD3L	PWM 3 Data register low byte	B4h	PWMD3[7:0]								00H

Mnemonic: PWMC

Address: B5h

7	6	5	4	3	2	1	0	Reset
-	-	PWMM[1:0]		PWM3EN	PWM2E N	PWM1E N	PWM0E N	00H

PWMM[1:0]: PWM mode select.

When PWMM[1:0] = 00, or 11, the PWM output frequency = Fosc/256.

When PWMM[1:0] = 01, the PWM output frequency = Fosc/1024.

When PWMM[1:0] = 10, the PWM output frequency = Fosc/4096.

Also

PWMM[1:0]	Mode
00	8-bit mode
01	10-bit mode
10	12-bit mode
11	8-bit mode

Fosc is the external crystal, or oscillator, frequency

PWM3EN: PWM Channel 3 enable control bit.

PWM3EN = 1 - PWM Channel 3 enable.

PWM3EN = 0 - PWM Channel 3 disable.

PWM2EN: PWM Channel 2 enable control bit.

PWM2EN = 1 - PWM Channel 2 enable.

PWM2EN = 0 - PWM Channel 2 disable.

PWM1EN: PWM Channel 1 enable control bit.

PWM1EN = 1 - PWM Channel 1 enable.

PWM1EN = 0 - PWM Channel 1 disable.

PWM0EN: PWM 0 Channel 0 enable control bit.

PWM0EN = 1 - PWM Channel 0 enable.

PWM0EN = 0 - PWM Channel 0 disable.

Mnemonic: PWMD0H							Address: BCh	
7	6	5	4	3	2	1	0	Reset
-	-	-	-	PWMD0 [11:8]				00H

Mnemonic: PWMD0L							Address: BDh	
7	6	5	4	3	2	1	0	Reset
PWMD0 [7:0]								00H

PWMD0 [11:0]: PWM channel 0 data register.

Mnemonic: PWMD1H							Address: BEh	
7	6	5	4	3	2	1	0	Reset
-	-	-	-	PWMD1 [11:8]				00H

Mnemonic: PWMD1L							Address: BFh	
7	6	5	4	3	2	1	0	Reset
PWMD1 [7:0]								00H

PWMD1 [11:0]: PWM channel 1 data register.

Mnemonic: PWMD2H							Address: B1h	
7	6	5	4	3	2	1	0	Reset
-	-	-	-	PWMD2 [11:8]				00H

Mnemonic: PWMD2L							Address: B2h	
7	6	5	4	3	2	1	0	Reset
PWMD2 [7:0]								00H

PWMD2 [11:0]: PWM channel 2 data register.

Mnemonic: PWMD3H							Address: B3h	
7	6	5	4	3	2	1	0	Reset
-	-	-	-	PWMD3 [11:8]				00H

Mnemonic: PWMD3L							Address: B4h	
7	6	5	4	3	2	1	0	Reset
PWMD3 [7:0]								00H

PWMD3 [11:0]: PWM channel 3 data register.

12. Power Management Unit

Power management unit serves two power management modes, IDLE and STOP, for the users to do power saving function.

Mnemonic: PCON							Address: 87h	
7	6	5	4	3	2	1	0	Reset
SMOD	MDUF	-	PMW	-	-	STOP	IDLE	00H

STOP: Stop mode control bit. Setting this bit turning on the Stop Mode.
Stop bit is always read as 0

IDLE: Idle mode control bit. Setting this bit turning on the Idle Mode.
Idle bit is always read as 0

12.1 Idle mode

Setting the IDLE bit of PCON register invokes the IDLE mode. The IDLE mode stop the clock source for CPU but keep the peripherals under running condition. The power consumption will drop because the CPU is not active now. The CPU can exit the IDLE state with any interrupts or a reset.

12.2 Stop mode

Setting the STOP bit of PCON register invokes the STOP mode. All internal clocking in this mode is turned off. The CPU will exit this state from a no-clocked external interrupt or a reset condition. Internally generated interrupts (timer, serial port, watchdog ...) are not useful since they require clocking activity.

13. Pulse Width Modulation (PWM)

SM59R16A2 provides four-channel PWM outputs. The 4 channels can be used simultaneously. But their configuration (the counting bit number and counting frequency) will be the same defined in one SFR.

Mnemonic	Description	Direct	Bit 7	Bit 6	Bit 5	Bit 4	Bit 3	Bit 2	Bit 1	Bit 0	RESET
PWM											
PWMC	PWM Control register	B5h	-	-	PWMM[1:0]		PWM3EN	PWM2EN	PWM1EN	PWM0EN	00H
PWMD0H	PWM 0 Data register high byte	BCh	-	-	-	-	PWMD0[11:8]				00H
PWMD0L	PWM 0 Data register low byte	BDh	PWMD0[7:0]								00H
PWMD1H	PWM 1 Data register high byte	BEh	-	-	-	-	PWMD1[11:8]				00H
PWMD1L	PWM 1 Data register low byte	BFh	PWMD1[7:0]								00H
PWMD2H	PWM 2 Data register high byte	B1h	-	-	-	-	PWMD2[11:8]				00H
PWMD2L	PWM 2 Data register low byte	B2h	PWMD2[7:0]								00H
PWMD3H	PWM 3 Data register high byte	B3h	-	-	-	-	PWMD3[11:8]				00H
PWMD3L	PWM 3 Data register low byte	B4h	PWMD3[7:0]								00H

Mnemonic: PWMC

Address: B5h

7	6	5	4	3	2	1	0	Reset
-	-	PWMM[1:0]	PWM3EN	PWM2EN	PWM1EN	PWM0EN	00H	

PWMM[1:0]: PWM mode select.

When PWMM[1:0] = 00 or 11 , the PWM output frequency = $F_{osc}/256$.

When PWMM[1:0] = 01 , the PWM output frequency = $F_{osc}/1024$.

When PWMM[1:0] = 10 , the PWM output frequency = $F_{osc}/4096$.

Also

PWMM[1:0]	Mode
-----------	------

00	8-bit mode
01	10-bit mode
10	12-bit mode
11	8-bit mode

here Fosc is the external crystal or oscillator frequency

- PWM3EN: PWM Channel 3 enable control bit.
 PWM3EN = 1 - PWM Channel 3 enable.
 PWM3EN = 0 - PWM Channel 3 disable.
- PWM2EN: PWM Channel 2 enable control bit.
 PWM2EN = 1 - PWM Channel 2 enable.
 PWM2EN = 0 - PWM Channel 2 disable.
- PWM1EN: PWM Channel 1 enable control bit.
 PWM1EN = 1 - PWM Channel 1 enable.
 PWM1EN = 0 - PWM Channel 1 disable.
- PWM0EN: PWM Channel 0 enable control bit.
 PWM0EN = 1 - PWM Channel 0 enable.
 PWM0EN = 0 - PWM Channel 0 disable.

Mnemonic: PWMD0H Address: BCh

7	6	5	4	3	2	1	0	Rese t
-	-	-	-	PWMD0[11:8]				00H

Mnemonic: PWMD0L Address: BDh

7	6	5	4	3	2	1	0	Rese t
PWMD0[7:0]								00H

PWMD0[11:0] PWM channel 0 data register.
:

Mnemonic: PWMD1H Address: BEh

7	6	5	4	3	2	1	0	Rese t
-	-	-	-	PWMD1[11:8]				00H

Mnemonic: PWMD1L Address: BFh

7	6	5	4	3	2	1	0	Rese t
PWMD1[7:0]								00H

PWMD1[11:0] PWM channel 1 data register.

:

Mnemonic: PWMD2H							Address: B1h	
7	6	5	4	3	2	1	0	Rese t
-	-	-	-	PWMD2 [11:8]			00H	

Mnemonic: PWMD2L							Address: B2h	
7	6	5	4	3	2	1	0	Rese t
PWMD2 [7:0]							00H	

PWMD2 [11:0] PWM channel 2 data register.

:

Mnemonic: PWMD3H							Address: B3h	
7	6	5	4	3	2	1	0	Rese t
-	-	-	-	PWMD3 [11:8]			00H	

Mnemonic: PWMD3L							Address: B4h	
7	6	5	4	3	2	1	0	Rese t
PWMD3 [7:0]							00H	

PWMD3 [11:0] PWM channel 3 data register.

:

IICBR[2:0]: Baud rate selection (master mode only), where Fosc is the external crystal, or oscillator, frequency. The default is Fosc/512 for users' convenience.

IICBR[2:0]	Baud rate
000	Fosc/32
001	Fosc/64
010	Fosc/128
011	Fosc/256
100	Fosc/512
101	Fosc/1024
110	Fosc/2048
111	Fosc/4096

Mnemonic: IICS

Address: F8H

7	6	5	4	3	2	1	0	Reset
MStart	RxIF	TxIF	RDR	TDR	RxAk	TxAk	RW	00H

MStart: Master start control bit (master mode only)

If this bit is set, the module will generate a start condition to the SDA and SCL lines, and send out the calling address which is stored in either IICA1 or IICA2 (selected by MAS control bit). After software clears this bit, the module will generate a stop condition to the SDA and SCL.

RxIF: Data receive interrupt flag

It is set after the IICRWD (IIC read /write data buffer) is loaded with a newly received data byte.

TxIF: Data transmit interrupt flag

It is set when all the 8 bits in the shift register are transmitted, the 8 bits are from IICRWD (IIC read/write data buffer) loaded into the shift register.

RDR: Read data ready

It is set to high by hardware when a new byte is received and stored in IICRWD. The software must clear this bit after it gets the data from IICRWD. The IIC module is able to write new data into IICRWD only when this bit is cleared.

TDR: Transmit data ready

After putting the data into IICRWD in transmission, the software needs to set this bit to '1' to inform the IIC module to send the data out. After IIC module finishes sending the data from IICRWD, this bit will be cleared automatically.

RxAk: Receive acknowledgement

This is a read-only bit judged by the transmitting side only.

If the IIC module is in the master mode : after it transmits the 8-bit data to the slave side, the slave side will return RxAk

= 0 : the slave receives the data successfully

= 1 : the slave fails to receive the data

If the IIC module is in the slave mode : after it sends the 8-bit data to the master side, the master side will return RxAk

= 0 : the master receives the data successfully (in some application, it may be that the master requires more data)

= 1 : the master fails to receive the data (in some applications, it may be that the master does not require any more data)

TxAk: Transmit acknowledgement

It is the corresponding bit of RxAk in the receiving side. It represents the receiving status as explained in RxAk. Actually, it is sent as the 9th bit in one byte transmission as shown in Fig. 14-1.

RW: Slave mode read or write

It is a read-only bit used in slave mode only. It is from Bit 0 of IICA1 or IICA2 of the master side as described below

= 0 : master asks this IIC module (in slave mode) to receive data (read)

=1 : master asks this IIC module (in slave mode) to transmit data (write)

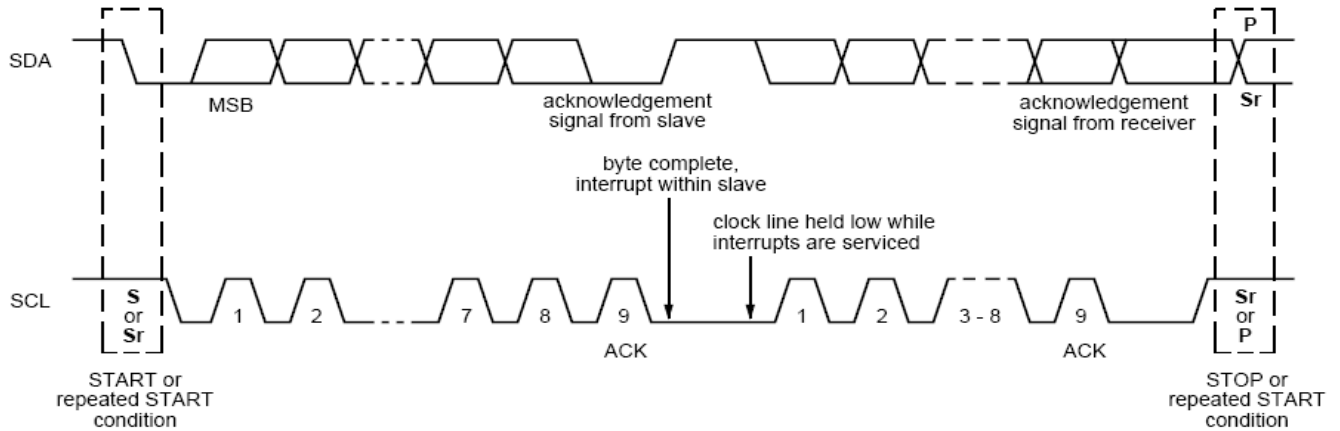


Fig 14-1 : Acknowledgement bit in the 9th bit of a byte transmission

Mnemonic: IICA1							Address: FAH	
7	6	5	4	3	2	1	0	Reset
IICA1[7:1]							Match1 or RW1	A0H

Slave mode:

IICA1[7:1]: IIC Address registers

This is the first 7-bit address for this slave module. It will be checked when an address (from master) is received

Match1: When IICA1 matches with the received address from the master side, this bit will be set to 1 by hardware. When IIC bus is stopped, this bit will be cleared automatically.

Master mode:

IICA1[7:1]: IIC Address registers

This 7-bit address indicate the slave with which it wants to communicate.

RW1: This bit will be sent out as RW to the slave side if the module has set the MStart or RStart bit. It appears at the 8th bit after the IIC address as shown in Fig. 14-2. It is used to indicate to the slave the direction of the following communication. If it is 1, the module is in master receive mode. If 0, the module is in master transmit mode.

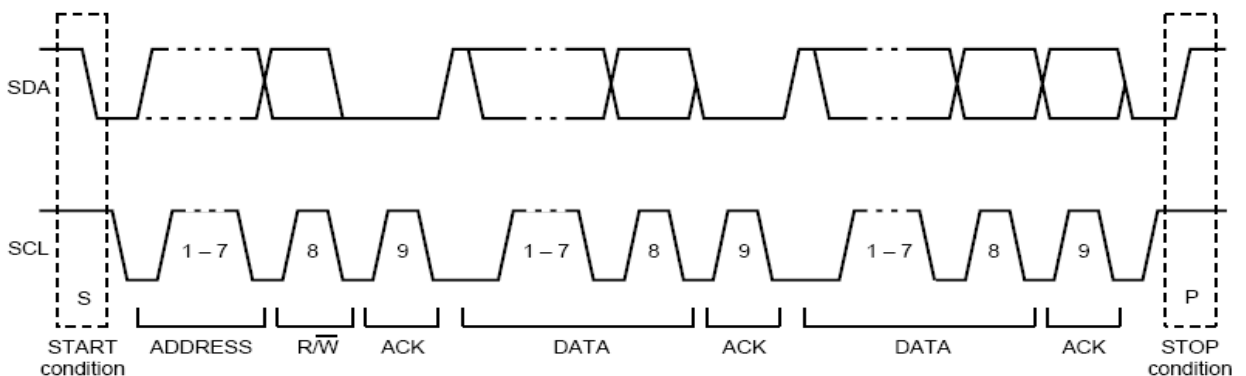


Fig. 14-2 : RW bit in the 8th bit after IIC address

Mnemonic: IICA2							Address: FBH	
7	6	5	4	3	2	1	0	Reset
IICA2[7:1]							Match2 or RW2	
R/W							R or R/W	
							60H	

Slave mode:

IICA2[7:1]: IIC Address registers

This is the second 7-bit address for the slave module. It will be checked when an address is received from the master.

Match2: When IICA1 matches with the received address from the master side, this bit will be set to 1 by the hardware. When IIC bus is stopped, this bit will be cleared automatically.

Master mode:

IICA2[7:1]: IIC Address registers

This 7-bit address indicates the slave with which it wants to communicate.

RW2: This bit will be sent out as RW of the slave side if the module has set the MStart or RStart bit. It is used to tell the slave the direction of the following communication. If it is 1, the module is in master receive mode. If 0, the module is in master transmit mode.

Mnemonic: IICRWD							Address: FCH	
7	6	5	4	3	2	1	0	Reset
IICRWD[7:0]								
							00H	

IICRWD[7:0]: IIC read write data buffer.

In receive (read) mode, the received byte is stored here.

In transmit mode, the byte to be shifted out through SDA is written here.

12. Power Management Unit

Power management unit serves two power management modes, IDLE and STOP, for the users to do power saving function.

Mnemonic: PCON							Address: 87h	
7	6	5	4	3	2	1	0	Reset
SMOD	MDUF	-	PMW	-	-	STOP	IDLE	00H

STOP: Stop mode control bit. Setting this bit turning on the Stop Mode.
Stop bit is always read as 0

IDLE: Idle mode control bit. Setting this bit turning on the Idle Mode.
Idle bit is always read as 0

12.1 Idle mode

Setting the IDLE bit of PCON register invokes the IDLE mode. The IDLE mode stop the clock source for CPU but keep the peripherals under running condition. The power consumption will drop because the CPU is not active now. The CPU can exit the IDLE state with any interrupts or a reset.

12.2 Stop mode

Setting the STOP bit of PCON register invokes the STOP mode. All internal clocking in this mode is turned off. The CPU will exit this state from a no-clocked external interrupt or a reset condition. Internally generated interrupts (timer, serial port, watchdog ...) are not useful since they require clocking activity.

13. Pulse Width Modulation (PWM)

SM59R16A2 provides four-channel PWM outputs. The 4 channels can be used simultaneously. But their configuration (the counting bit number and counting frequency) will be the same defined in one SFR.

Mnemonic	Description	Direct	Bit 7	Bit 6	Bit 5	Bit 4	Bit 3	Bit 2	Bit 1	Bit 0	RESET
PWM											
PWMC	PWM Control register	B5h	-	-	PWMM[1:0]		PWM3EN	PWM2EN	PWM1EN	PWM0EN	00H
PWMD0H	PWM 0 Data register high byte	BCh	-	-	-	-	PWMD0[11:8]				00H
PWMD0L	PWM 0 Data register low byte	BDh	PWMD0[7:0]								00H
PWMD1H	PWM 1 Data register high byte	BEh	-	-	-	-	PWMD1[11:8]				00H
PWMD1L	PWM 1 Data register low byte	BFh	PWMD1[7:0]								00H
PWMD2H	PWM 2 Data register high byte	B1h	-	-	-	-	PWMD2[11:8]				00H
PWMD2L	PWM 2 Data register low byte	B2h	PWMD2[7:0]								00H
PWMD3H	PWM 3 Data register high byte	B3h	-	-	-	-	PWMD3[11:8]				00H
PWMD3L	PWM 3 Data register low byte	B4h	PWMD3[7:0]								00H

Mnemonic: PWMC

Address: B5h

7	6	5	4	3	2	1	0	Reset
-	-	PWMM[1:0]	PWM3EN	PWM2EN	PWM1EN	PWM0EN	00H	

PWMM[1:0]: PWM mode select.

When PWMM[1:0] = 00 or 11 , the PWM output frequency = $F_{osc}/256$.

When PWMM[1:0] = 01 , the PWM output frequency = $F_{osc}/1024$.

When PWMM[1:0] = 10 , the PWM output frequency = $F_{osc}/4096$.

Also

PWMM[1:0]	Mode
-----------	------

00	8-bit mode
01	10-bit mode
10	12-bit mode
11	8-bit mode

here Fosc is the external crystal or oscillator frequency

- PWM3EN: PWM Channel 3 enable control bit.
 PWM3EN = 1 - PWM Channel 3 enable.
 PWM3EN = 0 - PWM Channel 3 disable.
- PWM2EN: PWM Channel 2 enable control bit.
 PWM2EN = 1 - PWM Channel 2 enable.
 PWM2EN = 0 - PWM Channel 2 disable.
- PWM1EN: PWM Channel 1 enable control bit.
 PWM1EN = 1 - PWM Channel 1 enable.
 PWM1EN = 0 - PWM Channel 1 disable.
- PWM0EN: PWM Channel 0 enable control bit.
 PWM0EN = 1 - PWM Channel 0 enable.
 PWM0EN = 0 - PWM Channel 0 disable.

Mnemonic: PWMD0H Address: BCh

7	6	5	4	3	2	1	0	Rese t
-	-	-	-	PWMD0[11:8]				00H

Mnemonic: PWMD0L Address: BDh

7	6	5	4	3	2	1	0	Rese t
PWMD0[7:0]								00H

PWMD0[11:0] PWM channel 0 data register.
:

Mnemonic: PWMD1H Address: BEh

7	6	5	4	3	2	1	0	Rese t
-	-	-	-	PWMD1[11:8]				00H

Mnemonic: PWMD1L Address: BFh

7	6	5	4	3	2	1	0	Rese t
PWMD1[7:0]								00H

PWMD1[11:0] PWM channel 1 data register.

:

Mnemonic: PWMD2H							Address: B1h	
7	6	5	4	3	2	1	0	Rese t
-	-	-	-	PWMD2 [11:8]			00H	

Mnemonic: PWMD2L							Address: B2h	
7	6	5	4	3	2	1	0	Rese t
PWMD2 [7:0]							00H	

PWMD2 [11:0] PWM channel 2 data register.

:

Mnemonic: PWMD3H							Address: B3h	
7	6	5	4	3	2	1	0	Rese t
-	-	-	-	PWMD3 [11:8]			00H	

Mnemonic: PWMD3L							Address: B4h	
7	6	5	4	3	2	1	0	Rese t
PWMD3 [7:0]							00H	

PWMD3 [11:0] PWM channel 3 data register.

:

MAS = 0 is to use IICA1.

MSS = 1 is to use IICA2.

RStart: Re-start control bit (master mode only)

When this bit is set, the module will generate a start condition to the SDA and SCL lines (after current ACK) and send out the calling address which is stored in either IICA1 or IICA2 (selected by MAS control bit). After the address is sent out, this bit will be cleared by hardware.

IICBR[2:0] Baud rate selection (master mode only), where Fosc is the external crystal or oscillator frequency. The default is Fosc/512 for users' convenience.

IICBR[2:0]	Baud rate
000	Fosc/32
001	Fosc/64
010	Fosc/128
011	Fosc/256
100	Fosc/512
101	Fosc/1024
110	Fosc/2048
111	Fosc/4096

Mnemonic: IICS

Address: F8H

7	6	5	4	3	2	1	0	Reset
MStart	RxIF	TxIF	RDR	TDR	RxAk	TxAk	RW	00H

MStart: Master start control bit (master mode only)

If this bit is set, the module will generate a start condition to the SDA and SCL lines, and send out the calling address which is stored in either IICA1 or IICA2 (selected by MAS control bit). After software clears this bit, the module will generate a stop condition to the SDA and SCL.

RxIF: Data receive interrupt flag

It is set after the IICRWD (IIC read /write data buffer) is loaded with a newly receive data.

TxIF: Data transmit interrupt flag

It is set when all the 8 bits in the shift register are transmitted, the 8 bits are from IICRWD (IIC read /write data buffer) downloaded into the shift register.

RDR: Read data ready

It is set to high by hardware when a new byte is received and stored in IICRWD. The software must clear this bit after it gets the data from IICRWD. The IIC module is able to write new data into IICRWD only when this bit is cleared.

TDR: Transmit data ready

After putting the data into IICRWD in transmission, the software needs to set this bit to '1' to inform the IIC module to send the data out. After IIC module finishes sending the data from IICRWD, this bit will be cleared automatically.

RxAK: Receive acknowledgement

This is a read-only bit judged by the transmitting side only. If the IIC module is in the master mode : after it transmits the 8-bit data to the slave side, the slave side will returned RxAK

= 0 : the slave receives the data successfully

= 1 : the slave fails to receive the data

If the IIC module is in the slave mode : after it sends the 8-bit data to the master side, the master side will returned RxAK

= 0 : the master receives the data successfully (in some application, it may be that the master wants more data)

= 1 : the master fails to receive the data (in some applications, it may be that the master does not want any more data)

TxAK: Transmit acknowledgement

It is the corresponding bit of RxAK in the receiving side. It represents the receiving status as explained in RxAK.

Actually, it is sent as the 9th bit in one byte transmission as show in Fig. 14-1.

RW: Slave mode read or write

It is a read-only bit used in slave mode only. It is from Bit 0 of IICA1 or IICA2 of the master side as described below

= 0 : master asks this IIC module (in slave mode) to receive data (read)

=1 : master asks this IIC module (in slave mode) to transmit data (write)

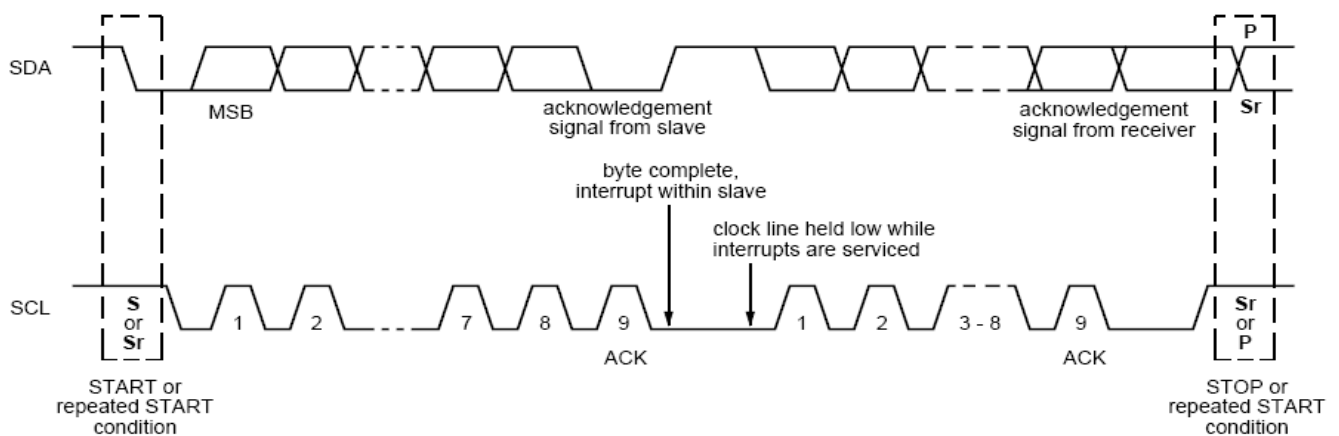


Fig 14-1 : Acknowledgement bit in the 9th bit of a byte transmission

Mnemonic: IICA1

Address: FAH

7 6 5 4 3 2 1 0 Res et

IICA1[7:1]	Match1 or RW1	A0H
------------	---------------	-----

Slave mode:

IICA1[7:1] IIC Address registers

: This is the first 7-bit address for this slave module. It will be checked when an address (from master) is received

Match1: When IICA1 matches with the received address from the master side, this bit will set to 1 by hardware. When IIC bus is stopped, this bit will clear automatically.

Master mode:

IICA1[7:1] IIC Address registers

: This 7-bit address indicate the slave with which it want to communicate.

RW1: This bit will be sent out as RW of the slave side if the module has set the MStart or RStart bit. It appears at the 8th bit after the IIC address as shown in Fig. 14-2. It is used to tell the salve the direction of the following communication. If it is 1, the module is in master receive mode. If 0, the module is in master transmit mode.

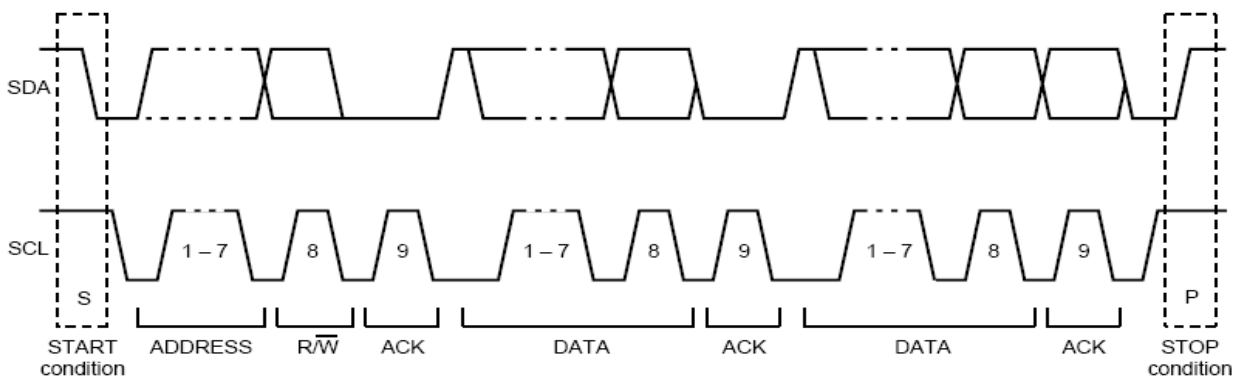


Fig. 14-2 : RW bit in the 8th bit after IIC address

Mnemonic: IICA2

Address: FBH

7 6 5 4 3 2 1 0 Res et

IICA2[7:1]	Match2 or RW2	60H
R/W	R or R/W	

Slave mode:

IICA2[7:1] IIC Address registers

: This is the second 7-bit address for this slave module. It will be checked when an address (from master) is received

Match2: When IICA1 matches with the received address from the master side, this bit will set to 1 by hardware. When IIC bus is stopped, this bit will clear automatically.

Master mode:

IICA2[7:1] IIC Address registers

: This 7-bit address indicate the slave with which it want to communicate.

RW2: This bit will be sent out as RW of the slave side if the module has set the MStart or RStart bit. It is used to tell the salve the direction of the following communication. If it is 1, the module is in master receive mode. If 0, the module is in master transmit mode.

Mnemonic: IICRWD

Address: FCH

7 6 5 4 3 2 1 0 Res et

IICRWD[7:0]	00H

IICRWD[7:0] IIC read write data buffer.

]: In receiving (read) mode, the received byte is stored here. In transmitting mode, the byte to be shifted out through SDA stays here.

15. SPI function

Serial Peripheral Interface (SPI) is a synchronous protocol that allows a master device to initiate communication with slave devices. There are 4 signals used in SPI, these are:

SPI_MOSI: data output in the master mode, data input in the slave mode,
 SPI_MISO: data input in the master mode, data output in the slave mode,
 SPI_SCK: clock output from the master, data are synchronous to this signal
 SPI_SS: input in the slave mode. The slave device samples this signal to determine whether it is selected by the master.

In the master mode, it can select the desired slave device by clearing any IO pin to logic 0. Fig. 15-1 is an example showing the relation of the 4 signals between master and slaves.

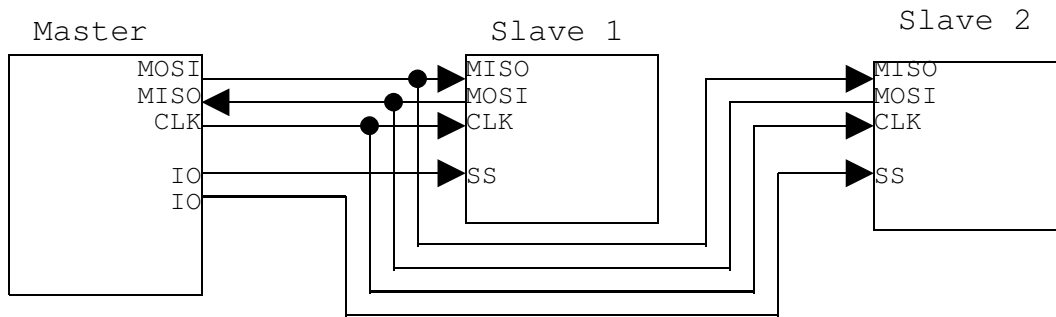


Fig. 15-1 : SPI signals between master and slave devices

There is only one SPI channel available. The SPI SFRs are shown as below:

Name	Description	Addr.	Bit 7	Bit 6	Bit 5	Bit 4	Bit 3	Bit 2	Bit 1	Bit 0	RESET
SPI function											
SPIC1	SPI control register 1	F1h	SPIEN	SPIMSS	SPISSP	SPICKP	SPICKE	SPIBR[2:0]			08H
SPIC2	SPI control register 2	F2h	SPIFD	TBC[2:0]			-	RBC[2:0]			00H
SPIS	SPI status register	F5h	-	SPIMLS	SPIOV	SPITXIF	SPITDR	SPIRXIF	SPIRDR	SPIRS	40H
SPITXD	SPI transmit data buffer	F3h	SPITXD[7:0]								00H
SPIRXD	SPI receive data buffer	F4h	SPIRXD[7:0]								00H

Mnemonic: SPIC2

Address: F2H

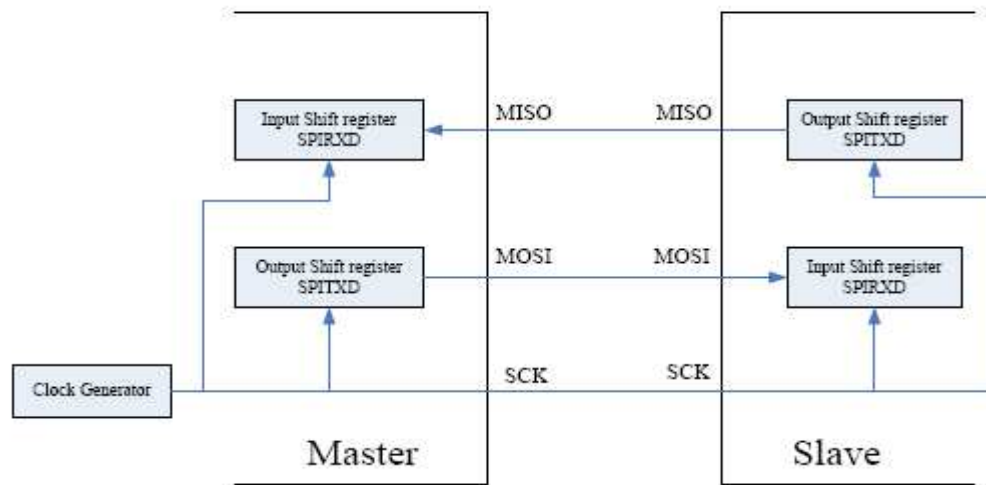
7	6	5	4	3	2	1	0	Reset
SPIFD	TBC[2:0]			-	RBC[2:0]			00H

SPIFD: Full-duplex mode enable.

"1" : enable full-duplex mode.

"0" : disable full-duplex mode.

When in full-duplex mode, the TBC[2:0] and RBC[2:0] bits are cleared and kept to zero: only 8-bit communication is allowed. In this mode, the master device transmits data to the slave device via the MOSI line, and the slave device responds by sending data back to the master device via the MISO line. Both outgoing data and incoming data are synchronized with the same clock SCK as illustrated below.



TBC[2:0]: SPI transmitter bit counter, here 1-8 bits are allowed except for the full-duplex mode

TBC[2:0]	Bit counter
0:0:0	8 bits output
0:0:1	1 bit output
0:1:0	2 bits output
0:1:1	3 bits output
1:0:0	4 bits output
1:0:1	5 bits output
1:1:0	6 bits output
1:1:1	7 bits output

RBC[2:0]: SPI receiver bit counter, here 1-8 bits are allowed except for the full-duplex mode

RBC[2:0]	Bit counter
0:0:0	8 bits input
0:0:1	1 bit input
0:1:0	2 bits input
0:1:1	3 bits input
1:0:0	4 bits input
1:0:1	5 bits input
1:1:0	6 bits input
1:1:1	7 bits input

Mnemonic: SPIS							Address: F5H	
7	6	5	4	3	2	1	0	Reset
-	SPIMLS	SPIOV	SPITXIF	SPITDR	SPIRXIF	SPIRDR	SPIRS	40H

- SPIMLS: MSB or LSB output /input first
 "1" : MSB output/input first
 "0" : LSB output/input first
- SPIOV: Overflow flag.
 When SPIRDR is set (a byte is available in SPIRXD but has not been read yet) and the next data byte is shifted into SPIRXD (there is no mechanism preventing this), this flag will be set to inform that the received data in SPIRXD is damaged by this overflow. It is cleared by hardware when SPIRDR is cleared.
- SPITXIF: Transmit Interrupt Flag.
 This bit is set when the data of the SPITXD register is loaded to the shift register.
- SPITDR: Transmit Data Ready.
 After writing the byte to be transmitted to the SPITXD register, the application must set this bit to '1' for the SPI module to start transmitting it. The bit is cleared automatically either after the byte is loaded onto the shift register, or after its transmission is complete.
- SPIRXIF: Receive Interrupt Flag.
 This bit is set after the SPIRXD is loaded with newly received data.
- SPIRDR: Receive Data Ready.
 When a byte is received, SPIRDR is set to inform MCU. The MCU must clear this bit after it reads the data from SPIRXD register. If the SPI module on the transmit side writes new data into the SPIRXD before this bit is cleared, then the data will be overwritten.
- SPIRS: Receive Start.
 This bit set to "1" to inform the SPI module to receive the data into SPIRXD register.

Mnemonic: SPITXD							Address: F3H	
7	6	5	4	3	2	1	0	Reset
SPITXD[7:0]								00H

SPITXD[7:0]: Transmit data buffer.

Mnemonic: SPIRXD							Address: F4H	
7	6	5	4	3	2	1	0	Reset
SPIRXD[7:0]								00H

SPIRXD[7:0]: Receive data buffer.

16. Expanded External Interrupt (EEI) interface

The Expanded External Interrupt (EEI) interface can be connected to an 8 x n matrix keyboard, or a similar device. It has 8 inputs that can be set to generate an interrupt on either high, or low, level. These 8 inputs are through P1 and can be used to wake up the CPU from either idle, or stop, modes. The 8 inputs are independent from each other but share the same interrupt vector.

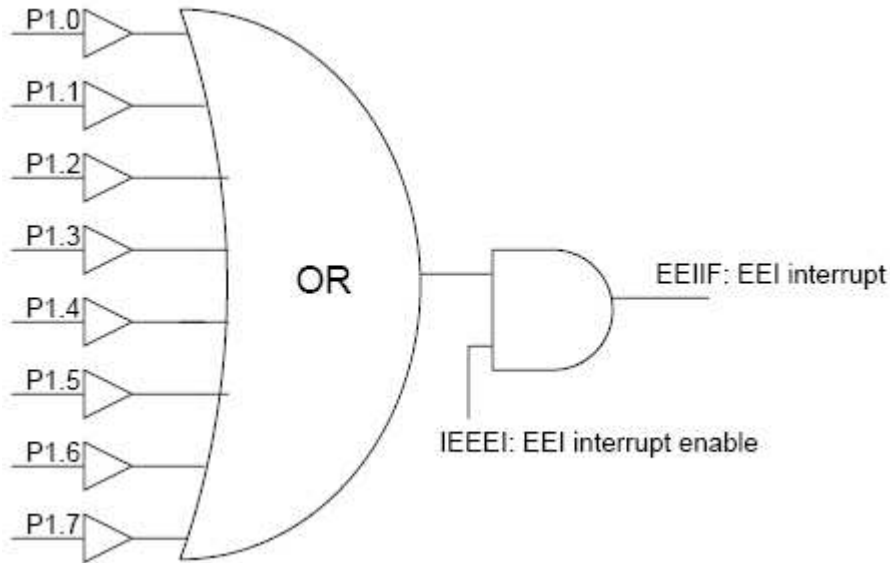


Fig. 16-1: Interrupts from EEI 8 inputs

Name	Description	Address	Bit 7	Bit 6	Bit 5	Bit 4	Bit 3	Bit 2	Bit 1	Bit 0	RESET
EEI function											
KBLS	EEI level selection	93h	KBLS7	KBLS6	KBLS5	KBLS4	KBLS3	KBLS2	KBLS1	KBLS0	00H
KBE	EEI input enable	94h	KBE7	KBE6	KBE5	KBE4	KBE3	KBE2	KBE1	KBE0	00H
KBF	EEI flag	95h	KBF7	KBF6	KBF5	KBF4	KBF3	KBF2	KBF1	KBF0	00H

Mnemonic: KBL5

Address: 93H

7	6	5	4	3	2	1	0	Reset
KBL5.7	KBL5.6	KBL5.5	KBL5.4	KBL5.3	KBL5.2	KBL5.1	KBL5.0	00H

- KBL5.7: EEI line 7 level selection bit
 - 0 : enable a low level detection on P17.
 - 1 : enable a high level detection on P17.
- KBL5.6: EEI line 6 level selection bit
 - 0 : enable a low level detection on P16.
 - 1 : enable a high level detection on P16.
- KBL5.5: EEI line 5 level selection bit
 - 0 : enable a low level detection on P15.
 - 1 : enable a high level detection on P15.
- KBL5.4: EEI line 4 level selection bit
 - 0 : enable a low level detection on P14.
 - 1 : enable a high level detection on P14.
- KBL5.3: EEI line 3 level selection bit
 - 0 : enable a low level detection on P13.
 - 1 : enable a high level detection on P13.
- KBL5.2: EEI line 2 level selection bit
 - 0 : enable a low level detection on P12.
 - 1 : enable a high level detection on P12.
- KBL5.1: EEI line 1 level selection bit
 - 0 : enable a low level detection on P11.
 - 1 : enable a high level detection on P11.
- KBL5.0: EEI line 0 level selection bit
 - 0 : enable a low level detection on P10.
 - 1 : enable a high level detection on P10.

Mnemonic: KBE

Address: 94H

7	6	5	4	3	2	1	0	Reset
KBE.7	KBE.6	KBE.5	KBE.4	KBE.3	KBE.2	KBE.1	KBE.0	00H

- KBE.7: EEI line 7 enable bit
 - 0 : enable standard I/O pin.
 - 1 : enable KBF.7 bit in KBF register to generate an interrupt request.
- KBE.6: EEI line 6 enable bit
 - 0 : enable standard I/O pin.
 - 1 : enable KBF.6 bit in KBF register to generate an interrupt request.
- KBE.5: EEI line 5 enable bit
 - 0 : enable standard I/O pin.
 - 1 : enable KBF.5 bit in KBF register to generate an interrupt request.
- KBE.4: EEI line 4 enable bit
 - 0 : enable standard I/O pin.
 - 1 : enable KBF.4 bit in KBF register to generate an interrupt request.
- KBE.3: EEI line 3 enable bit
 - 0 : enable standard I/O pin.
 - 1 : enable KBF.3 bit in KBF register to generate an interrupt request.
- KBE.2: EEI line 2 enable bit
 - 0 : enable standard I/O pin.
 - 1 : enable KBF.2 bit in KBF register to generate an interrupt request.
- KBE.1: EEI line 1 enable bit
 - 0 : enable standard I/O pin.
 - 1 : enable KBF.1 bit in KBF register to generate an interrupt request.
- KBE.0: EEI line 0 enable bit
 - 0 : enable standard I/O pin.
 - 1 : enable KBF.0 bit in KBF register to generate an interrupt request.

Mnemonic: KBF

Address: 95H

7	6	5	4	3	2	1	0	Reset
KBF.7	KBF.6	KBF.5	KBF.4	KBF.3	KBF.2	KBF.1	KBF.0	00H

- KBF.7: EEI line 7 flag
Set by hardware when P1.7 detects a programmed level. It generates an EEI interrupt request if KBE.7 is also set. It must be cleared by software.
- KBF.6: EEI line 6 flag
Set by hardware when P1.6 detects a programmed level. It generates an EEI interrupt request if KBE.6 is also set. It must be cleared by software.
- KBF.5: EEI line 5 flag
Set by hardware when P1.5 detects a programmed level. It generates an EEI interrupt request if KBE.5 is also set. It must be cleared by software.
- KBF.4: EEI line 4 flag
Set by hardware when P1.4 detects a programmed level. It generates an EEI interrupt request if KBE.4 is also set. It must be cleared by software.
- KBF.3: EEI line 3 flag
Set by hardware when P1.3 detects a programmed level. It generates an EEI interrupt request if KBE.3 is also set. It must be cleared by software.
- KBF.2: EEI line 2 flag
Set by hardware when P1.2 detects a programmed level. It generates an EEI interrupt request if KBE.2 is also set. It must be cleared by software.
- KBF.1: EEI line 1 flag
Set by hardware when P1.1 detects a programmed level. It generates an EEI interrupt request if KBE.1 is also set. It must be cleared by software.
- KBF.0: EEI line 0 flag
Set by hardware when P1.0 detects a programmed level. It generates an EEI interrupt request if KBE.0 is also set. It must be cleared by software.

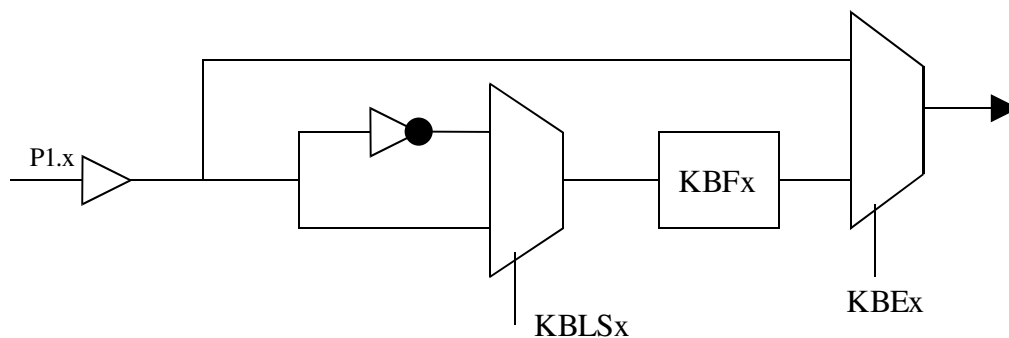


Fig. 16-2: Block diagram of EEI input

17. EEPROM

Any byte of flash memory not used by the application's program, can be used to record data. The data can be stored and updated as if there is an EEPROM embedded in the device. No special coding is necessary for this function as the hardware takes care of the necessary data move, page erase and write back operations. It is the responsibility of the application to avoid writing data to the program area.

“EEPROM” data is read/written from/to the flash memory by using MOVX instructions. Setting bit PMW (PCON.4) to 1 will make the MOVX instructions to access the flash memory, instead of the internal, or external, SRAM.data memory address space. Data overwrite (update) is also supported because the hardware will erase the original data first, and then write the new data. PMW is set through the ACC register.

Name	Description	Address	Bit 7	Bit 6	Bit 5	Bit 4	Bit 3	Bit 2	Bit 1	Bit 0	RESET
EEPROM function											
PCON	Power Control	87h	SMD	MDUF	-	PMW	-	-	STOP	IDLE	00h
PES	Program Memory Page Erase Control Register	A1h	EPE	-	-	-	-	-	-	-	00h

Mnemonic: PCON Address: 87h

7	6	5	4	3	2	1	0	Reset
SMOD	MDUF	-	PMW	-	-	STOP	IDLE	00H

PMW is cleared by the application software, or by a reset. When the PMW is cleared, the MOVX instructions allow read/write access to the data memory address space again. The following table shows the program memory instructions that may be used when the PMW bit is set.

Mnemonic	Description
MOVX A,@Ri	Move program memory data (8-bits addr.) to ACC
MOVX A,@DPTR	Move program memory data (16-bits addr.) to ACC
MOVX @Ri,A	Move ACC to program memory (8-bits addr.)
MOVX @DPTR,A	Move ACC to program memory (16-bits addr.)

Mnemonic: PES				Address: Alh				
7	6	5	4	3	2	1	0	Reset
EPE	-	-	-	-	-	-	-	00h

The flash is divided in pages of 512 bytes each. A whole page can be erased if EPE is set. The following example illustrates the corresponding instruction sequence:

```

ORL  PCON,#010h      ;Enable program memory read/write
MOV  DPTR,#0200h     ;Define page erase area from 0x200 to 0x3FF
MOV  PES,#080h       ;Enable page erase function
MOV  A,#0FFh         ;Load the accumulator with 0xFF
MOVX @DPTR,A         ;After the execution of this instruction, the
                       ;contents of the flash memory from 0200 to
                       ;0x3FF, will change to 0xFF
MOV  PES,#00h        ;Disable the page erase function
ANL  PCON,#0EFh      ;Disable Program Memory read/write

```

18. Analog-to-Digital Converter (ADC)

CRD89C51RC1T provides a four channel, 10-bit, SAR ADC with a measurement range of 0 ~ 3.3V and excellent precision. The four channels are available on pins P4.4 to P4.7. The fastest conversion speed is 160 system clocks per sample. With a 20MHz crystal it takes about 8 μ s to complete one A-to-D conversion. An interrupt vector at address 0x0053 is dedicated to the converter (see the interrupts section for more details). The conversion result is available at register ADCD[9:0]. The resolution of the converter can be set to either 10 bits, or 8 bits.

It is advised that, during a conversion, there will be no large current surges caused by the IO ports, or any other module, of the device. A large current surge may influence the voltage reference of the converter and render the conversion result inaccurate.

The following graph shows the relation between the input voltage and the resulting code for a 3.3V application, in 10 bits mode.

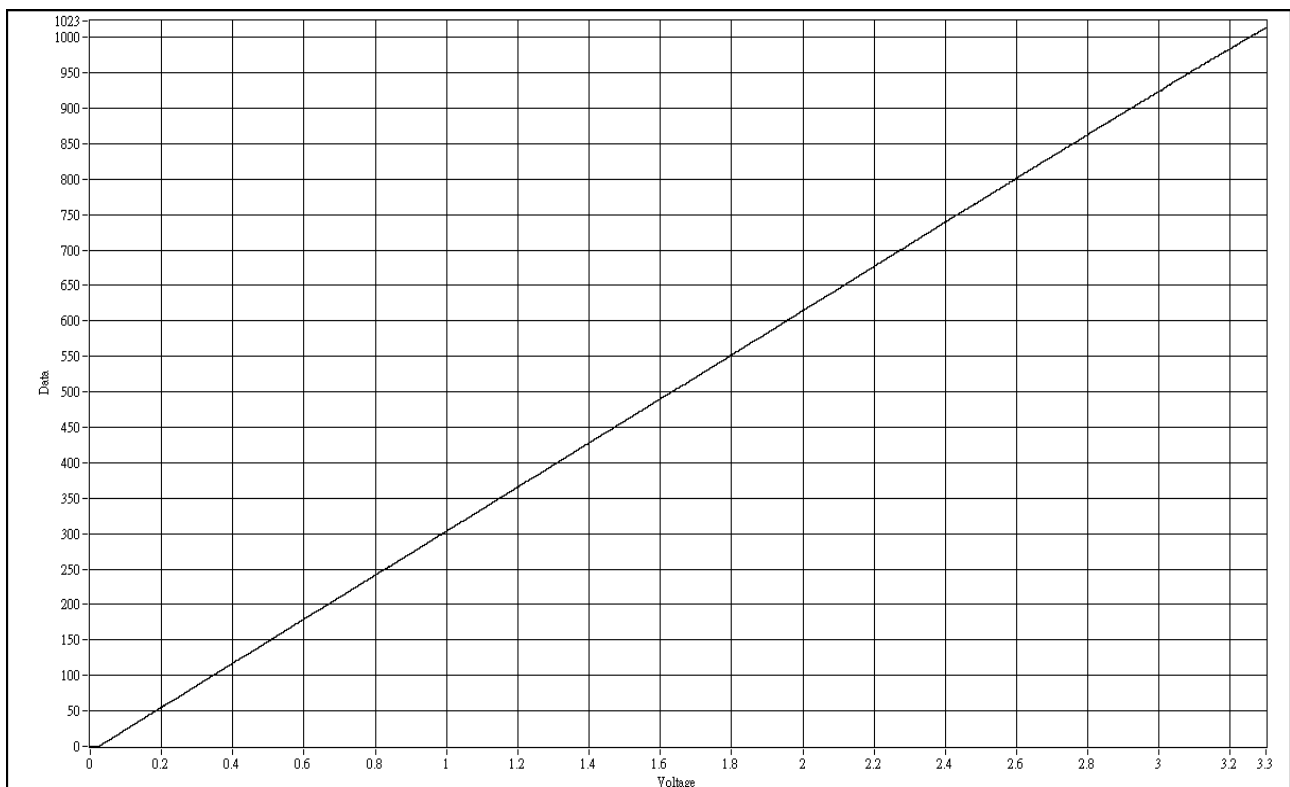


Fig. 18-1: The precision of the converter in 10-bit mode.

Even though the range of the ADC is 0~3.3V, a voltage divider circuit can be used in order to extend its range. The following example illustrates the suggested circuit for a 0~5V analog signal.

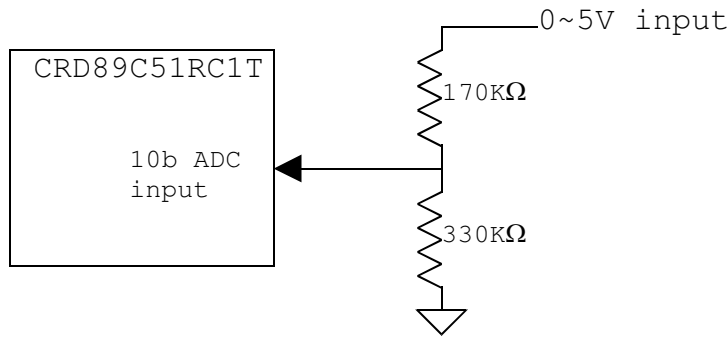


Fig. 18-2 : example circuit for 0~5V measurement

The following tables illustrate the SFRs controlling the ADC.

Name	Description	Address	Bit 7	Bit 6	Bit 5	Bit 4	Bit 3	Bit 2	Bit 1	Bit 0	RESET	
ADC												
ADCC1	ADC Control register 1	ABh	-	-	-	-	ADC3E	ADC2E	ADC1E	ADC0E	00H	
ADCC2	ADC Control register 2	ACh	COM	START	ADC8B	-	ADCCCH[1:0]		ADCCS[1:0]		00H	
ADCDH	ADC data high byte	ADh	-						ADCD [9:8]			00H
ADC DL	ADC data low byte	A Eh	ADCD[7:0]								00H	

Mnemonic: ADCC1

Address : ABh

7	6	5	4	3	2	1	0	Reset
-	-	-	-	ADC3E	ADC2E	ADC1E	ADC0E	00H

- ADC3E: =0 :No external analog input is accepted via ADC Channel 3
=1 :ADC Channel 3 is enabled and capable of taking analog measurements
- ADC2E: =0 :No external analog input is accepted via ADC Channel 2
=1 :ADC Channel 2 is enabled and capable of taking analog measurements
- ADC1E: =0 :No external analog input is accepted via ADC Channel 1
=1 :ADC Channel 1 is enabled and capable of taking analog measurements
- ADC0E: =0 :No external analog input is accepted via ADC Channel 0
=1 :ADC Channel 0 is enabled and capable of taking analog measurements

Mnemonic: ADCC2							Address : ACh	
7	6	5	4	3	2	1	0	Reset
COM	START	ADC8B	-	ADCCCH [1:0]	ADCCS [1:0]			00H

- COM: COM will be set to 1 as soon as a conversion is complete. It is cleared automatically by the hardware. This is a read only bit.
- START: This bit must be set to 1 for a conversion to begin. It is cleared automatically by the hardware.
- ADC8B: Selects 10-bit, or 8-bit, ADC mode.
 = 0: (default value) 10-bit data conversion. The result, ADCD[9:0], is returned as ADCD [9:8] = ADCDH [1:0] and ADCD [7:0] = ADCDL [7:0]
 = 1: 8-bit data conversion. ADCD[7:0] = ADCDL [7:0]
- ADCCCH[1:0]: Selects the analog input signal:
 = 00 : Channel 0 (P4.4) is selected
 = 01 : Channel 1 (P4.5) is selected
 = 10 : Channel 2 (P4.6) is selected
 = 11 : Channel 3 (P4.7) is selected
 The application must also set the corresponding channel enable bit to 1, as described in ADCC1.
- ADCCS[1:0]: Selects the clock frequency used by the ADC module :
 = 00 : ADC clock is system clock divided by 8
 = 01 : ADC clock is system clock divided by 16
 = 10 : ADC clock is system clock divided by 32
 = 11 : ADC clock is system clock divided by 64

Since ADC takes about 20 ADC clocks to complete one conversion, the fastest speed of one conversion is about 160 system clocks with ADCLK=00

The maximum ADC clock frequency is 500KHz.

Mnemonic:ADCDH							Address:ADH	
7	6	5	4	3	2	1	0	Reset
							ADCDH [1:0]	00H

ADCDH[1:0]: The two high bits of the digital result of the ADC

Mnemonic:ADCDL							Address:AEH	
7	6	5	4	3	2	1	0	Reset
ADCDL [7:0]								00H

ADCDL[7:0]: The eight low bits of the digital result of the ADC

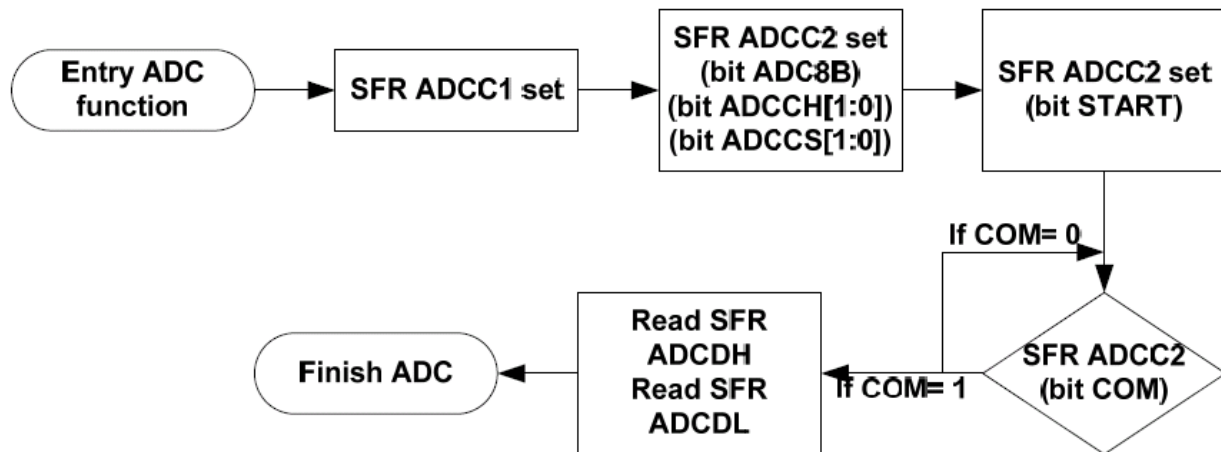
$$\text{ADC Clock} = \frac{F_{clk}}{8 \times 2^{\text{ADCCS}}}$$

$$\text{ADC Conversion Time} = \frac{20}{\text{ADC Clock}}$$

$$\text{ADC Sample Rate} = \frac{1}{\text{ADC Conversion Time}}$$

All I/O pins bear a weak pull up circuit. In 5V systems, it is suggested to output 0000 on Port4[7:4]. This must be done only once, just before switching from GPIO to Analog input. This action will cancel any offset that the pull up circuit might impose on the converter. This is necessary only in 5V systems.

The procedure for selecting an input and making an analog to digital conversion is illustrated by the following flowchart:



An example program to read channel 0 is the following:

```
void main(void)
{
    unsigned char temp_H,temp_L;

    //ADCC1 = 0x0F; //ADC Channel all enable
    ADCC1 = 0x01; //ADC Channel 0 enable
    //ADCC2 = 0x20; //ADC 8-bit mode, Channel0 is analog input, Div=8
    ADCC2 = 0x03; //ADC 10-bit mode, Channel0 is analog input, Div=64

    while(1)
    {
        ADCC2 |=0x40; //sbit ADC START = 1, will auto clear after finish
        while(!ADCC2 && 0x80); //finish if COM=1, converting if COM=0

        temp_L = ADCDL; //ADC result
        temp_H = ADCDH;
    }
}
```

Operating Conditions

Symbol	Description	Min.	Typ.	Max.	Unit.	Remarks
TA	Operating temperature	-40	25	85	°C	Ambient temperature under bias
Vdd33	Supply voltage	3.0	3.3	3.6	V	
Vcc5	Supply voltage	4.5	5.0	5.5	V	

DC Characteristics

(TA = -40 degrees C to 85 degrees C, Vcc = 3.3V)

Symbol	Parameter	Valid	Min.	Max.	Unit	Test Conditions
VIL1	Input Low Voltage	Port 0,1,2,3,4,5	-0.5	0.8	V	Vdd=3.3V
VIL2	Input Low Voltage	RES, XTAL1	0	0.8	V	
VIH1	Input High Voltage	Port 0,1,2,3,4,5	2.0	Vdd+0.5	V	
VIH2	Input High Voltage	RES, XTAL1	70%Vdd	Vdd+0.5	V	
VOL1	Output Low Voltage	port 0, ALE		0.45	V	IOL=3.2mA
VOL2	Output Low Voltage	Port 1,2,3,4,5		0.45	V	IOL=1.6mA
VOH1	Output High Voltage	Port 0	2.4		V	IOH=-800µA
			90%Vcc		V	IOH=-80µA
VOH2	Output High Voltage	Port 1,2,3,4,5,ALE	2.4		V	IOH=-60µA
			90%Vcc		V	IOH=-10µA
IIL	Logical 0 Input Current	Port 1,2,3,4,5		-75	µA	Vin=0.45V
ITL	Logical Transition Current	Port 1,2,3,4,5		-650	µA	Vin=2.0V
ILI	Input Leakage Current	port 0		±10	µA	0.45V<Vin<Vcc
R RES	Reset Pull-down Resistance	RES	50	300	Kohm	
C IO	Pin Capacitance			10	pF	Freq=1MHz, Ta=25 °C
I CC	Power Supply Current	Vdd		20	mA	Active mode, 16MHz
				6.5	mA	Idle mode, 16MHz
				30	µA	Power down mode

Note1: Under steady state (non-transient) conditions, IOL must be externally

Limited as follows : Maximum IOL per port pin : 10mA

Maximum IOL per 8-bit port : port 0 :26mA

port 1,2,3,4,5 :15mA

Maximum total IOL for all output pins : 71mA

If IOL exceeds the condition, VOL may exceed the related specification. Pins are not guaranteed to sink current greater than the listed test conditions.

DC Characteristics

(TA = -40 degrees C to 85 degrees C, Vcc = 5.0V)

Symbol	Parameter	Valid	Min.	Max.	Unit	Test Conditions
VIL1	Input Low Voltage	Port 0,1,2,3,4,5	-0.5	0.8	V	Vdd=5.0V
VIL2	Input Low Voltage	RES, XTAL1	0	0.8	V	
VIH1	Input High Voltage	Port 0,1,2,3,4,5	2.0	Vdd+0.5	V	
VIH2	Input High Voltage	RES, XTAL1	70%Vdd	Vdd+0.5	V	
VOL1	Output Low Voltage	port 0, ALE		0.45	V	IOL=3.2mA
VOL2	Output Low Voltage	Port 1,2,3,4,5		0.45	V	IOL=1.6mA
VOH1	Output High Voltage	Port 0	2.4		V	IOH=-800µA
			90%Vcc		V	IOH=-80µA
VOH2	Output High Voltage	Port 1,2,3,4,5,ALE	2.4		V	IOH=-60µA
			90%Vcc		V	IOH=-10µA
IIL	Logical 0 Input Current	Port 1,2,3,4,5		-75	µA	Vin=0.45V
ITL	Logical Transition Current	Port 1,2,3,4,5		-650	µA	Vin=2.0V
ILI	Input Leakage Current	port 0		±10	µA	0.45V<Vin<Vcc
R RES	Reset Pull-down Resistance	RES	50	300	Kohm	
C IO	Pin Capacitance			10	pF	Freq=1MHz, Ta=25 °C
I CC	Power Supply Current	Vdd		25	mA	Active mode, 16MHz
				20	mA	Idle mode, 16MHz
				30	µA	Power down mode

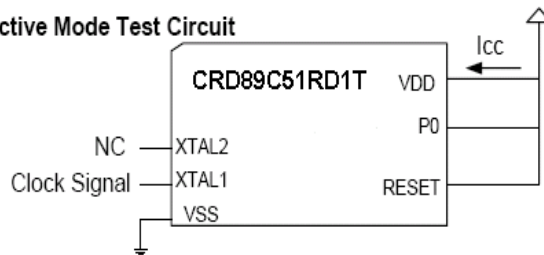
Note1: Under steady state (non-transient) conditions, IOL must be externally Limited as follows : Maximum IOL per port pin : 10mA

Maximum IOL per 8-bit port : port 0 :26mA
port 1,2,3,4,5 :15mA

Maximum total IOL for all output pins : 71mA

If IOL exceeds the condition, VOL may exceed the related specification. Pins are not guaranteed to sink current greater than the listed test conditions.

Icc Active Mode Test Circuit

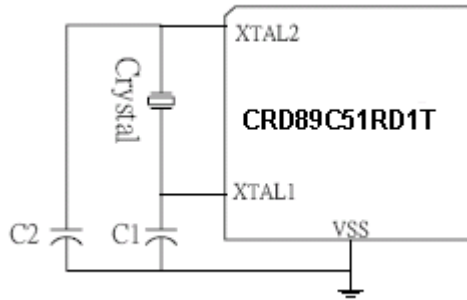


AC Characteristics

(16/24MHz, operating conditions; CL for Port 0, ALE and PSEN Outputs=150pF; CL for all Other Output=80pF)

Symbol	Parameter	Valid Cycle	fosc=16MHz			Variable fosc			Unit
			Min.	Typ.	Max	Min.	Typ.	Max	
T LHLL	ALE pulse width	RD/WRT	115			2xT - 10			nS
T AVLL	Address Valid to ALE low	RD/WRT	43			T - 20			nS
T LLAX	Address Hold after ALE low	RD/WRT	53			T - 10			nS
T LLIV	ALE low to Valid Instruction In	RD			240			4xT-10	nS
T LLPL	ALE low to #PSEN low	RD	53			T - 10			nS
T PLPH	#PSEN pulse width	RD	173			3xT - 15			nS
T PLIV	#PSEN low to Valid Instruction In	RD			177			3xT-10	nS
T PXIX	Instruction Hold after #PSEN	RD	0			0			nS
T PXIZ	Instruction Float after #PSEN	RD			87			T + 25	nS
T AVIV	Address to Valid Instruction In	RD			292			5xT -20	nS
T PLAZ	#PSEN low to Address Float	RD			10			10	nS
T RLRH	#RD pulse width	RD	365			6xT - 10			nS
T WLWH	#WR pulse width	WRT	365			6xT - 10			nS
T RLDV	#RD low to Valid Data In	RD			302			5xT - 10	nS
T RHDX	Data Hold after #RD	RD	0			0			nS
T RHDZ	Data Float after #RD	RD			145			2xT+20	nS
T LLDV	ALE low to Valid Data In	RD			590			8xT - 10	nS
T AVDV	Address to Valid Data In	RD			542			9xT - 20	nS
T LLYL	ALE low to #WR High or #RD low	RD/WRT	178		197	3xT-10		3xT+10	nS
T AVYL	Address Valid to #WR or #RD low	RD/WRT	230			4xT-20			nS
T QVWH	Data Valid to #WR High	WRT	403			7xT-35			nS
T QVWX	Data Valid to #WR transition	WRT	38			T - 25			nS
T WHQX	Data hold after #WR	WRT	73			T + 10			nS
T RLAZ	#RD low to Address Float	RD						5	nS
T YALH	#WR or #RD high to ALE high	RD/WRT	53		72	T -10		T + 10	nS
T CHCL	clock fall time								nS
T CLCX	clock low time								nS
T CLCH	clock rise time								nS
T CHCX	clock high time								nS
T, TCLCL	clock period			63			1/fosc		nS

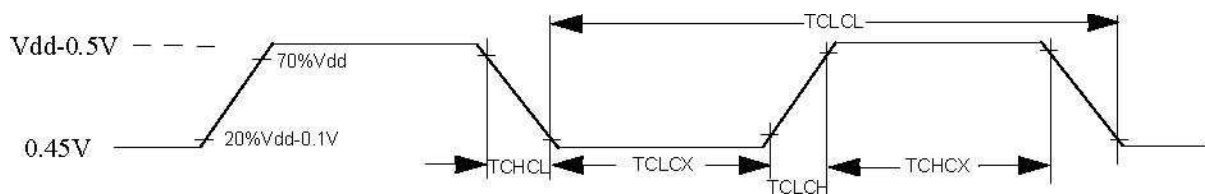
Application Reference



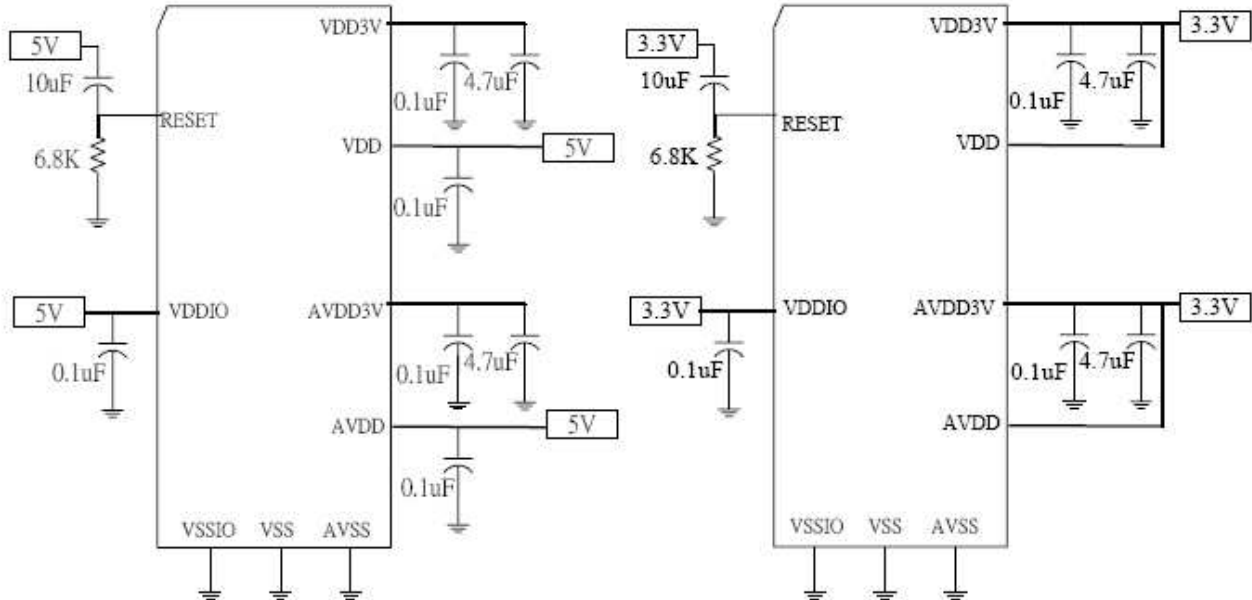
Valid for CRD89C51RC1T				
X'tal	3MHz	6MHz	9MHz	12MHz
C1	30 pF	30 pF	30 pF	30 pF
C2	30 pF	30 pF	30 pF	30 pF
X'tal	16MHz	24MHz		
C1	30 pF	15 pF		
C2	30 pF	15 pF		

Please note that the individual characteristics of each crystal, or ceramic resonator, may lead to variations to the oscillator circuit, especially in higher operating frequencies. The designer should consult the datasheet of the crystal, or ceramic resonator, in order to establish the appropriate values of the external components.

Timing Critical, Requirement of External Clock (Vss=0.0V is assumed)



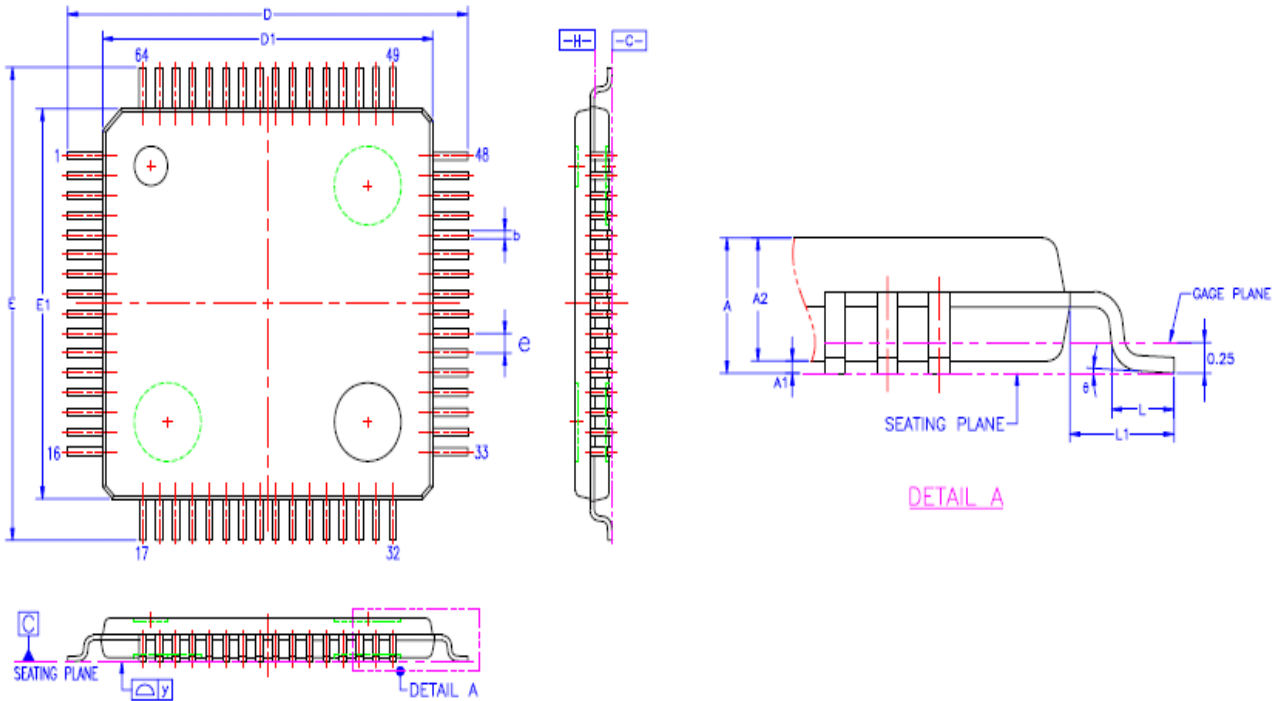
Reset pin and 3.3V regulator (Vdd = 5.5V, or 3.3V)



CRD89C51RC1T contains two regulator-like circuits for the digital and analog parts of the core respectively. They produce and supply 3.3V to the core when the system voltage is 5V. They are bypassed in 3.3V systems. However, the 0.1 μ F and 4.7 μ F capacitors which are shown above, connected to Vdd3V and Avdd3V, must always be used in either 5V, or 3.3V systems. Omitting them will render the supply to core, unstable. The regulator-like circuits cannot be used to supply any other circuit but the digital and analog parts of the core.

Vdd_IO is the power source of GPIOs for driving their outputs high. In general cases, the voltage of the IO pins is the same as that of Vdd (Vdd_IO equals AVdd and DVdd. But, Vdd_IO can operate at a different supply voltage than the core. For example, if the Vdd is 3.3V and the external IO pins operate at 5V, Vdd_IO is suggested to be 5V.

TQFP 64L(10x10x2.0mm) Package Information :



Symbol	Dimension in mm			Dimension in inch		
	Min	Nom	Max	Min	Nom	Max
A	—	—	1.20	—	—	0.047
A1	0.05	—	0.15	0.002	—	0.006
A2	0.95	—	1.05	0.037	—	0.041
b	0.17	—	0.27	0.007	—	0.011
c	0.09	—	0.20	0.004	—	0.008
D	11.90	—	12.10	0.469	—	0.476
D1	9.90	—	10.10	0.390	—	0.398
E	11.90	—	12.10	0.469	—	0.476
E1	9.90	—	10.10	0.390	—	0.398
e	—	0.50	—	—	0.020	—
L	0.45	—	0.75	0.018	—	0.030
L1	—	1.00	—	—	0.039	—
y	—	0.08	—	—	0.003	—
θ	0°	—	7°	0°	—	7°

Note:

1. Dimensions D1 & E1, do not include mold protrusion.
2. Dimension b does not include dambar protrusion.