

# DVDO

# DVDO EDGE Green



### Our Award-Winning Video Reference Series Technologies Include:

**Precision Deinterlacing of Standard Definition and High Definition signals** to give the highest quality video from all interlaced sources including most cable, satellite and over-the-air broadcasts.

**Precision Video Scaling™ up to 1080p** for perfect resolution matching to your HDTV.

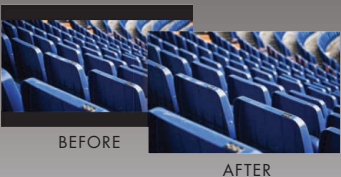
**Mosquito Noise Reduction** to reduce the compression artifacts in digitally compressed signals, like cable, satellite and internet-based video.

**Fine Detail and Edge Enhancement** allow you to accurately adjust the sharpness of the picture to your liking.

**PReP™ dramatically improves video quality** of improperly processed video by sources such as a DVD player, Blu-ray, or cable/satellite box, using DVDO's exclusive, Progressive ReProcessing, PReP technology.

**Precision AV LipSync eliminates lip sync problems** by removing the common delay between audio and video.

**No more black bars.** Tired of those "black bars" on your HDTV? EDGE allows you to choose how you want the image fill the screen with separate horizontal and vertical zoom controls.



[www.dvdo.com](http://www.dvdo.com)

## High Definition Video Processor and Connectivity Hub Solution

The EDGE Green is the heart of a new installation, a key upgrade to an existing system, or a perfect add-on to a new component or HDTV purchase. It provides the advanced video processing and connectivity hub that high-performance systems require, and with a new green low power rating.

### Ease of Use

- Intuitive user interface with Set-Up Wizards that make installation a breeze
- On Screen Hints guide the user as they navigate the menu
- Automatically selects a source device when it turns on using the Auto Priority feature
- IR Remote with Direct Access simplifies system operation

### Advanced Connectivity

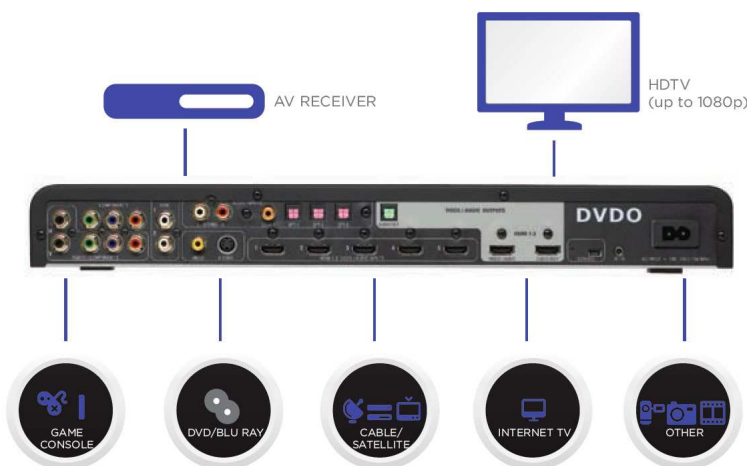
- Five HDMI 1.3 Inputs for advanced multi-source digital connectivity and system expansion
- Four Analog Video Inputs, including two Component Inputs, one S-Video and one Composite Video
- Five Separate audio inputs that can be assigned to any of the video inputs, including three Optical Digital, one Coaxial Digital, and one Stereo Analog input
- Two HDMI 1.3 Outputs - one that supports audio and video that can be connected directly to an HDTV and one that supports audio only that can be connected directly to A/V Receiver. An Optical Digital audio output is also available for legacy A/V receivers that do not support HDMI

### Lip Sync

Video processing causes the video to be delayed. At the same time if the audio is not delayed you will experience an AV lip sync issue. Precision AV LipSync™ automatically puts the correct delay on the audio so that the audio and incoming video signal are perfectly in sync. Some signals, like cable and satellite, inherently have a lip sync problem and for those sources EDGE has up to 200 milliseconds of user-adjustable audio delay.

### Gamer Specific Features

Special low latency processing modes allow game consoles to be connected to your HDTV without compromising "playability".





Rear Panel of the DVDO EDGE Green

## Technical Specifications

### Nine Video Inputs

- One Composite (NTSC/PAL/SECAM)
- One S-Video (NTSC/PAL/SECAM)
- One Component (YPbPr or RGB/S) processes 480i/p-60, 576i/p-50, 720p-50/60, 1080i-50/60
- One Component/RGBHV (YPbPr/RGBS/RGBHV) processes 480i/p60, 576i/p-50, 720p-50/60, 1080i-50/60, VGA/SVGA/XGA/SXGA@60Hz
- Five HDMI 1.3 processes 480i/p-60, 576 i/p-50, 720p-50/60, 1080i-50/60, 1080p-24/50/60, VGA/SVGA/XGA/SXGA@60Hz

### Ten Audio Inputs

- Five HDMI 1.3
- One Coaxial Digital (assignable)
- Three Optical Digital (assignable)
- One Analog Left/Right (assignable)

### One HDMI 1.3 Audio/Video Output (For Display Connection)

- Backwards compatible with DVI displays

### Two Digital Audio Outputs

- One HDMI 1.3 'Audio Only' output for receivers with HDMI
- One Optical Digital for receivers without HDMI

### Preset output resolutions

- 480p-60 (720 x 480@60Hz)
- 576p-50 (720 x 576@50Hz)
- 720p-60 (1280 x 720@60Hz)
- 720p-50 (1280 x 720@50Hz)
- 1080i-60 (1920 x 1080@60Hz)
- 1080i-50 (1920 x 1080@50Hz)
- 1080p-60 (1920 x 1080@60Hz)
- 1080p-50 (1920 x 1080@50Hz)
- 1080p-24 (1920 x 1080@24Hz)
- VGA (640 x 480@60Hz)
- 1080p-25 (1920 x 1080@25Hz)

DVDO™, the DVDO family product logos (Quick™, DVDO Air™, iScan™Duo and PReP™), are trademarks or registered trademarks of DVDO, Inc. in the United States or other countries.

Silicon Image®, the Silicon Image logo, Instaport®, the Instaport logos, InstaPrevue®, Simplay®, Simplay HD®, UltraGig™ and the UltraGig logo are trademarks or registered trademarks of Silicon Image, Inc. in the United States or other countries. HDMI® and the HDMI High-Definition Multimedia Interface logo are trademarks or registered trademarks of, and are used under license from, HDMI Licensing, LLC, in the United States or other countries. MHL® and the MHL logo are trademarks or registered trademarks of, and are used under license from, MHL, LLC, in the United States or other countries. WirelessHD®, the WirelessHD logo, WiHD® and the WiHD logo are trademarks, registered trademarks or service marks of SiBeam, Inc. in the United States and/or other countries.

HDMI Licensing, LLC; MHL, LL; Simplay Labs, LLC; and SiBeam, Inc. are wholly owned subsidiaries of Silicon Image, Inc.

All other trademarks and registered trademarks are the property of their respective owners in the United States or other countries. The absence of a trademark symbol does not constitute a waiver of Silicon Image's trademarks or other intellectual property rights with regard to a product name, logo or slogan.

### Controls

- IR remote control with direct access and rear panel IR connector (mini-jack)
- Functions accessible via On Screen Display (OSD)
- Fully programmable controls for each video input with
  - Automatic input source detection & input priority selection
  - Picture controls: Fine Detail, Edge Enhancement, Mosquito Noise Reduction, Brightness, Contrast, Saturation, Hue

### Power

- Internal universal power supply: 100 – 240 VAC @ 50-60 Hz
- Consumption <20w

### Physical Dimensions (height x width x depth)

- 2.1" x 16.9" x 10.3" (5.3cm x 42.9cm x 26.2cm)
- Weight – Complete Package: 9.2 lbs.
  - Unit Only: 6.2 lbs.



### Remote Control

Direct access codes for aspect ratio control including zoom, and input switching are also included.

# DVDO

### CUSTOMER SUPPORT INFORMATION

EMAIL: [INFO@DVDO.COM](mailto:INFO@DVDO.COM)

PHONE: 1-888-651-1765

[WWW.DVDO.COM/EDGE.ASPX](http://WWW.DVDO.COM/EDGE.ASPX)

1140 E. ARGUES AVE. SUITE 700  
SUNNYVALE, CA 94085

DVDO-PB-1004