

HIGH SPEED 1060nm SWEPT SOURCE FOR OCT



Product Features & Benefits

- **High Speed (100kHz) Sweep Rate**
- **High Output Power (15mW Average)**
- **Wide (>100nm) Tuning Range**
- **>10 mm Coherence Length**
- **Sinusoidal or Linear Drive**
- **Enables High Resolution and Signal to Noise Ratio**
- **Compact OEM Module design**
- **USB Interface**
- **Optional MZI Clock output**
- **Optional Balanced detector**

Applications

- **Optical Coherence Tomography for**
 - **Ophthalmology**
 - **Gastrointestinal**
 - **Cancer Diagnosis**
 - **Pulmonary**
 - **Industrial Imaging**
 - **Research & Development**
- **Metrology**

Introducing the AXSUN 1060nm OCT Swept Laser

To meet the performance needs of next-generation Optical Coherence Tomography systems, Axsun Technologies introduces a unique, patented Swept Source OCT Engine with superior optical performance, in a compact and cost-effective OEM package.

Product Description

The AXSUN 1060nm swept source engine provides high power, wide tuning range, and unprecedented sweep speed and coherence length, in a compact OEM design, controllable with an optional USB interface.

Unique Laser Design

Based on AXSUN Technologies' *optical integration* platform, and patented MEMS tunable optical filter, the Axsun swept source engine enables real time, high resolution OCT imaging at speeds and price points that were previously unattainable.

Speed & Reliability

The industry's highest speed Swept Source is enabled by a patented MEMS tunable filter design that has logged over 500 Million device hours in Optical Networks around the world since 2001. Axsun's optical platform has a well-deserved reputation for high reliability.

Convenient Form Factor

The Axsun Swept Source Engine resides in a compact (~114 x 177 x 52 mm) package and is straightforward to set up and integrate. The single DC supply, and USB interface allow the user to begin collecting data in a matter of minutes.

Swept Source OCT – Powered by Axsun!

PERFORMANCE SPECIFICATIONS FOR OCT SWEPT SOURCE

Parameter	SSOCT-1060			
	Min	Typ	Max	Units
Wavelength Range (-10dB) (100nm within this range)	980		1100	nm
Center Wavelength		1060		nm
Average output power	15	18		mW
Sweep Rep Rate			100	kHz
Coherence Length (3dB) ¹	10			mm
Output Connector		FC/APC		
Sweep Trigger Level		LVDS		
Sweep Trigger Connector		SATA		
Clock Output Level		LVDS		
Clock Connector (Frequency Variable)		SATA		
Laser Drive		Sine or Linear		.
Power input	12		18	VDC
Power Consumption (~25C)		12		W
Mechanical Dimensions	~114 X 177X 52 mm ~ 4.5 X 7 x 2 inches			

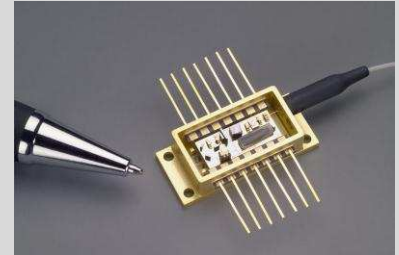
Interfaces

USB (optional)	USB-B
Optical	FC/APC
Trigger/Clk output	SATA

Notes

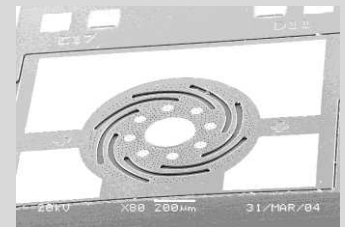
1. Coherence length is round trip up to maximum sweep rate, 3dB fringe depth
2. US Patent Application 60665716

Axsun Patented Swept Source



For more information

Contact AXSUN at:
AXSUN Technologies
1 Fortune Drive
Billerica, MA 01821
USA
+1 978.262.0049



Axsun MEMs Tunable Filter

Copyright © 2011
AXSUN Technologies