

# Beacon™ Car Security



## Overview

The Beacon™ is a mobile and portable DIY (Do It Yourself) car security system that requires **NO INSTALLATION**, and **NO CONTRACT**.

The Beacon car security device is based on a **unique patented intrusion sensing technology** that can detect intrusion into a car or other enclosed environment without the use of any internal wiring and installation of door/window, glass break, or shock sensors. Upon detection of an intrusion, its embedded GPS captures the location of the car and sends it over the Internet to the owner's cell phone through cellular networks. The owner can also use the cell phone to control the device and monitor its current location in real-time over the Internet. It is a compact device the size of a smart phone and can be hidden anywhere in the car, including the trunk and storage areas.

## Key Features

### **INTRUSION DETECTION** with Embedded Patented Intrusion Sensing Technology

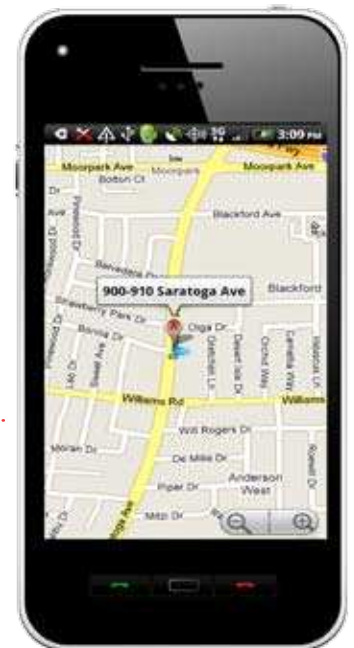
- Door/trunk/window open
- Glass break
- Impact/shock/tilt

### **GPS TRACKING** with Embedded GPS

- Track down car if stolen (moved)
- Locate car in a large unfamiliar parking lot
- Assisted GPS (AGPS) for fast fix
- Cellular triangulation
- Geo fencing

### **ALERT TO CELL PHONE** and Monitoring/Control Through Internet Connections

- Cellular



## COMPARISON WITH TRADITIONAL HOME SECURITY SYSTEM

	Traditional Car Security	aJile Beacon™
Installation Cost/Time	\$150 to \$250 / 4 to 8 Hours	None
Compromise the car wiring & structure?	Yes	No
Connect to car battery for power?	Yes	No
Portability	No	Yes

## TARGET ENVIRONMENTS

- Cars
- Trailers
- Boats/yachts
- Safes
- Containers
- Asset Trackers



## PRODUCT SPECIFICATION

### Communication channels

- Cellular

### Integrated GPS

### Patented intrusion sensing technology

- Door/trunk/windows open
- Glass break
- Impact/shock/tilt

### Client application platforms

- Android phones
- iPhones

### Alarm

- Buzzer

### Remote control and monitoring through smart phone

- Arm/disarm device
- Adjust intrusion sensor sensitivity level

- Turn buzzer on/off
- Monitor the capacity (%) left on battery
- Car tracking – Show location of the car on a map on demand (e.g. find your car in a large unfamiliar parking lot or car is lost), periodic or continuous
- Geo-fencing – Alert when the car is entering or existing perimeter around a pre-determined location
- Speed control – Alert when pre-determined speed is exceeded
- Curfew – Alert when the car is operated before or after a pre-determined time
- Point of interest – Alert when the car leaves or arrives at a pre-determined location

### Power supply

- Rechargeable Li-Ion battery

### Compact size

- 70mm (W) x 115 mm(L) x 15mm(H)

### Agency listings

- PTCRB
- UL 60950-1
- CSA IC22.2
- CE EN 60950-1
- FCC part 15 Class B

### Environment

- Operating temperature range – 0° C to 50° C (32° F to 122° F)
- Storage temperature range – 0° C to 70° C (32° F to 158° F)



920 Saratoga Ave., Ste.104  
San Jose, CA 95129

Tel: 408-557-0829  
Fax: 408-557-8279

Email:sales@ajile.com  
www.security.ajile.com