

# SF51 - SF59

**PRV : 50 - 1000 Volts**  
**Io : 5.0 Amperes**

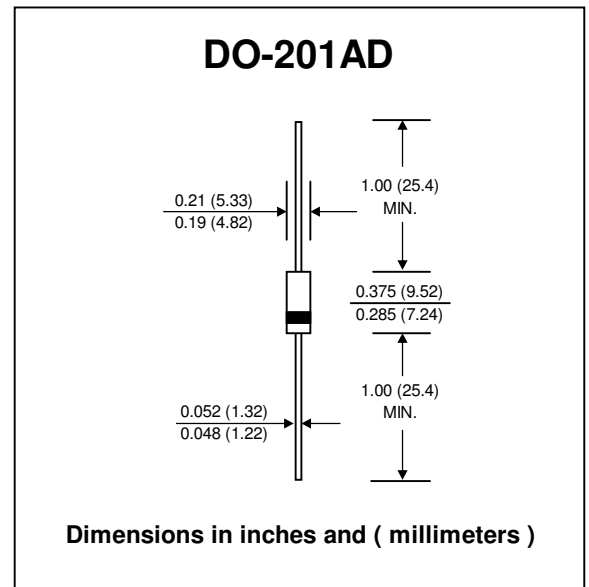
**FEATURES :**

- \* High current capability
- \* High surge current capability
- \* High reliability
- \* Low reverse current
- \* Low forward voltage drop
- \* Super fast recovery time
- \* Pb / RoHS Free

**MECHANICAL DATA :**

- \* Case : DO-201AD Molded plastic
- \* Epoxy : UL94V-O rate flame retardant
- \* Lead : Axial lead solderable per MIL-STD-202, Method 208 guaranteed
- \* Polarity : Color band denotes cathode end
- \* Mounting position : Any
- \* Weight : 1.16 grams

## SUPER FAST RECTIFIER DIODES



**MAXIMUM RATINGS AND ELECTRICAL CHARACTERISTICS**

Rating at 25 °C ambient temperature unless otherwise specified.  
 Single phase, half wave, 60 Hz, resistive or inductive load.  
 For capacitive load, derate current by 20%.

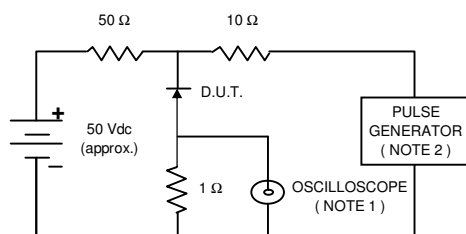
RATING	SYMBOL	SF51	SF52	SF53	SF54	SF55	SF56	SF57	SF58	SF59	UNIT
Maximum Recurrent Peak Reverse Voltage	VRRM	50	100	150	200	300	400	600	800	1000	V
Maximum RMS Voltage	VRMS	35	70	105	140	210	280	420	560	700	V
Maximum DC Blocking Voltage	VDC	50	100	150	200	300	400	600	800	1000	V
Maximum Average Forward Current 0.375"(9.5mm) Lead Length Ta = 55 °C	IF(AV)	5.0									A
Maximum Peak Forward Surge Current, 8.3ms Single half sine wave Superimposed on rated load (JEDEC Method)	IFSM	135									A
Maximum Peak Forward Voltage at IF = 5.0 A.	VF	0.95			1.7			4.0			V
Maximum DC Reverse Current Tj = 25 °C at Rated DC Blocking Voltage Tj = 100 °C	IR	10									µA
	IR(H)	500									µA
Maximum Reverse Recovery Time ( Note 1 )	Trr	35									ns
Typical Junction Capacitance ( Note 2 )	CJ	50									pf
Junction Temperature Range	TJ	- 65 to + 150									°C
Storage Temperature Range	TSTG	- 65 to + 150									°C

**Notes :**

- ( 1 ) Reverse Recovery Test Conditions : IF = 0.5 A, IR = 1.0 A, Irr = 0.25 A.
- ( 2 ) Measured at 1.0 MHz and applied reverse voltage of 4.0 Vdc

## RATING AND CHARACTERISTIC CURVES ( SF51 - SF59 )

FIG.1 - REVERSE RECOVERY TIME CHARACTERISTIC AND TEST CIRCUIT DIAGRAM



NOTES : 1. Rise Time = 7 ns max., Input Impedance = 1 megaohm, 22 pF.  
 2. Rise time = 10 ns max., Source Impedance = 50 ohms.  
 3. All Resistors = Non-inductive Types.

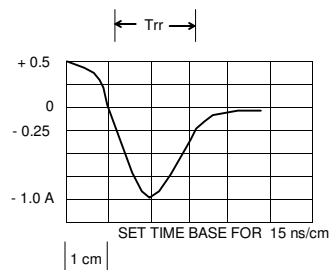


FIG.2 - DERATING CURVE FOR OUTPUT RECTIFIED CURRENT

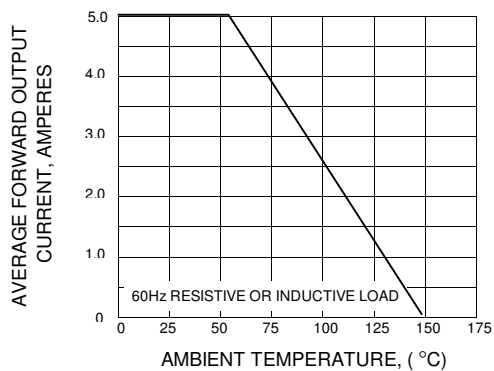


FIG.3 - MAXIMUM NON-REPETITIVE PEAK FORWARD SURGE CURRENT

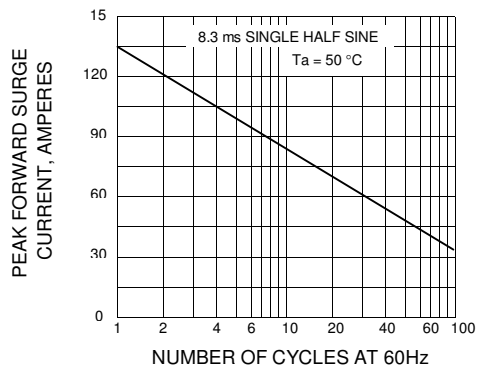


FIG.4 - TYPICAL FORWARD CHARACTERISTICS

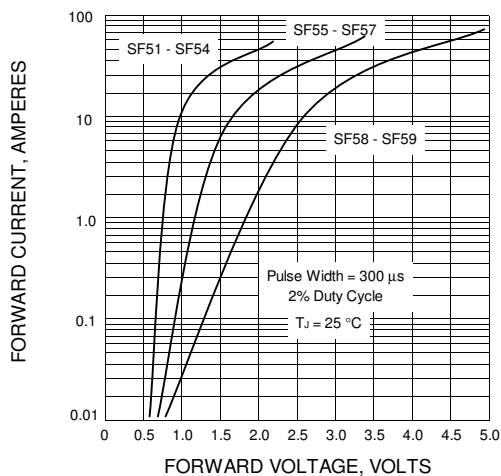


FIG.5 - TYPICAL REVERSE CHARACTERISTICS

