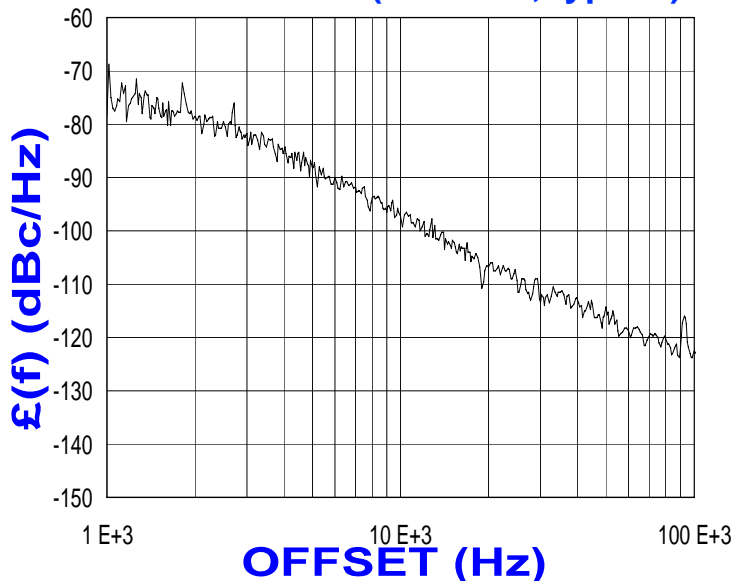



**PHASE NOISE (1 Hz BW, typical)**


FEATURES
<ul style="list-style-type: none"> <li>• Frequency Range: 2500 - 2640 MHz</li> <li>• Step Size: 250 KHz</li> <li>• PLL-24H - Style Package</li> </ul>
APPLICATIONS
<ul style="list-style-type: none"> <li>• Telecommunications</li> <li>• Satellite</li> <li>•</li> </ul>

PERFORMANCE SPECIFICATIONS	VALUE	UNITS
Frequency Range	2500 - 2640	MHz
Phase Noise @ 10 kHz offset (1 Hz BW, typ.)	-97	dBc/Hz
Harmonic Suppression (2nd, typ.)	-15	dBc
Sideband Spurs (typ.)	-70	dBc
Power Output	0±3	dBm
Load Impedance	50	$\Omega$
Step Size	250	kHz
Charge Pump Output Current	2500	$\mu$ A
Switching Speed (typ., adjacent channel)	1	mSec
Startup Lock Time (typ.)	1.5	mSec
Operating Temperature Range	-40 to 85	$^{\circ}$ C
Package Style	PLL-24H	
POWER SUPPLY REQUIREMENTS		
Supply Voltage (Vcc, nom.)	5	Vdc
Supply Current (Icc, typ.)	29	mA

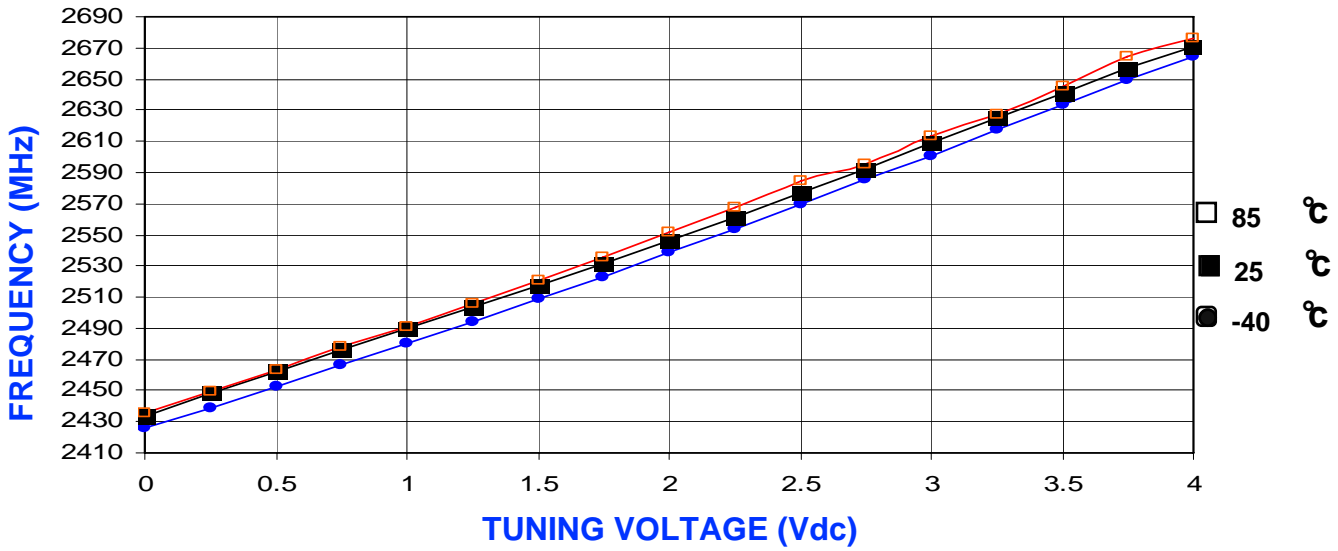
All specifications are typical unless otherwise noted and subject to change without notice.

APPLICATION NOTES
<ul style="list-style-type: none"> <li>• AN-107 : How to Solder Z-COMM VCOs / PLLs</li> <li>• AN-202 : PLL Functional Description</li> </ul>

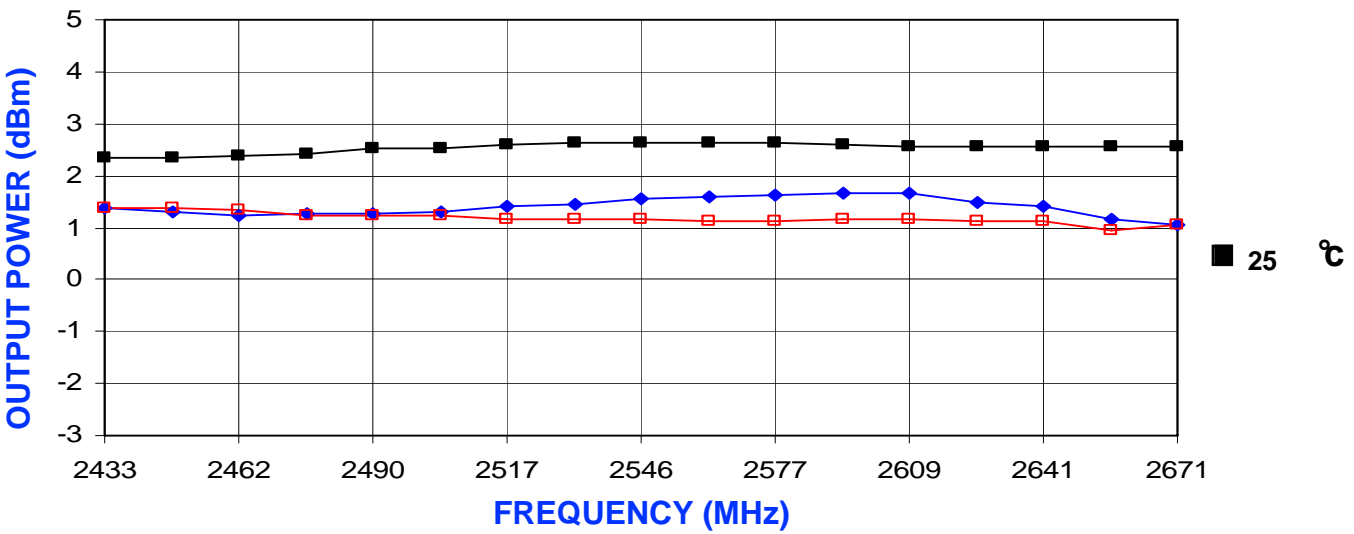
**NOTES:**

Reference Oscillator Signal:  $5 \text{ MHz} < f_{\text{osc}} < 40 \text{ MHz}$   
 Frequency Synthesizer: Analog Devices - ADF4106

VCO TUNING CURVE, typ.



VCO POWER CURVE, typ.



PHYSICAL DIMENSIONS

