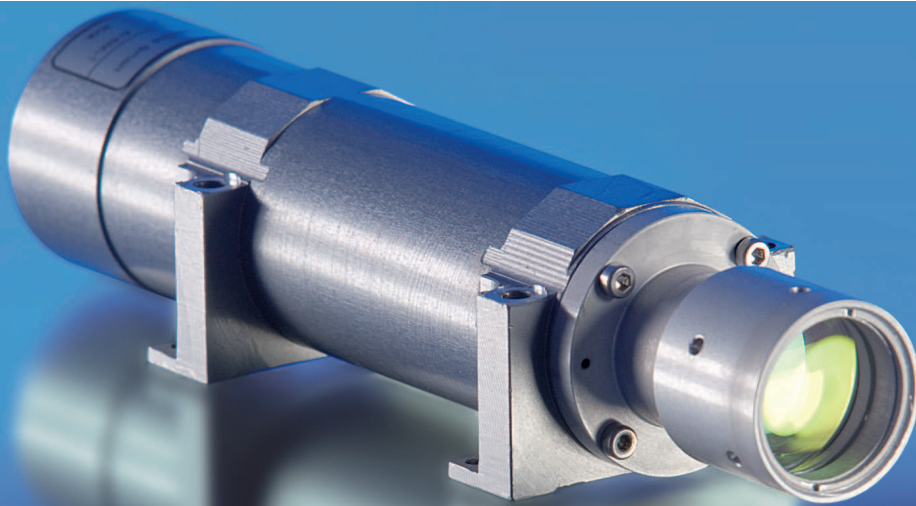




## Er-DML-1

### Compact Er:Glass Laser Module for Optical Rangefinders



#### Features:

- Er:Glass laser technology
- High pulse energy
- Integrated beam expander
- Eye-safe (laser class 1M)
- Flash lamp pumping
- Rugged, compact and light weight OEM design

#### Benefits:

- Easy integration into optronic systems
- Single shoot distance measurement possible
- No cooling required
- Reliable operation in harsh conditions

#### Applications:

- Long distance range finding
- Meteorology

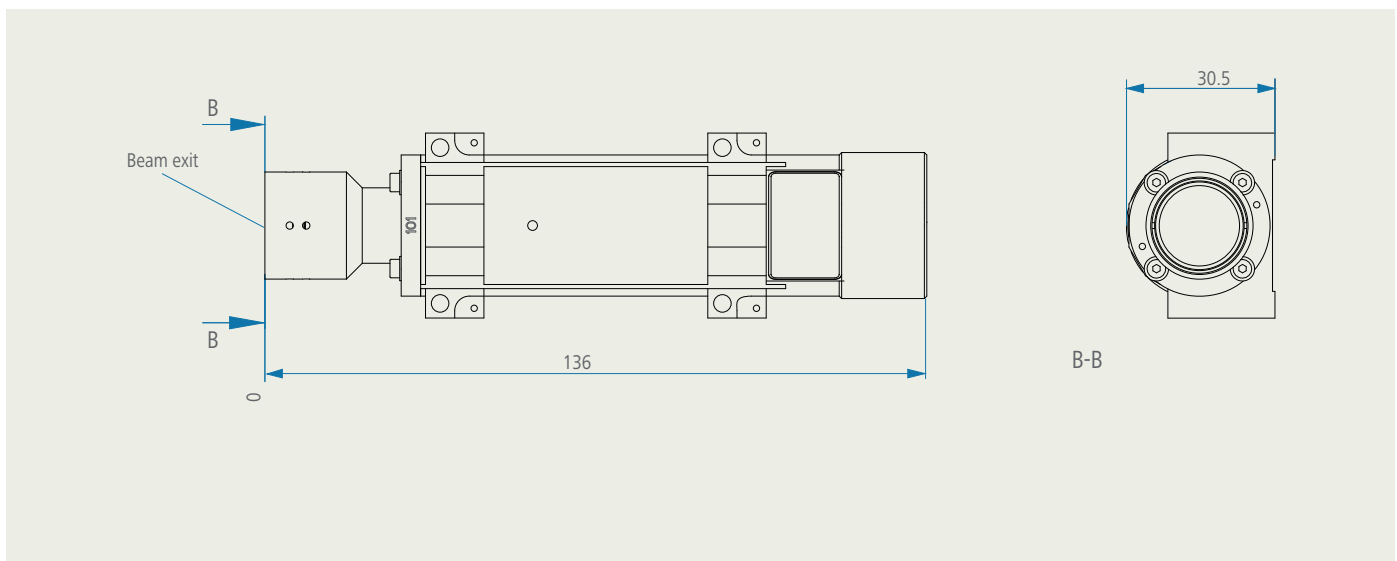
# Er-DML-1

## Compact Er:Glass Laser Module for Optical Rangefinders

### Specifications

Designation	Er-DML-1
Wavelength	1.54 $\mu\text{m}$
Pulse energy (nominal)	7 mJ
Pulse duration	< 40 ns
Repetition rate	1/3 Hz continuous, 1 Hz burst
Beam divergence	0.6 mrad
Beam diameter	18 mm
Lifetime	> 100 000 pulses
Laser class	1M (according to EN 60825-1:2001)
Operating temperature range	- 40 ... +70 °C
Dimensions	30.5 mm $\times$ 136 mm ( $\varnothing \times$ L)
Weight	< 200 g

It is our policy to constantly improve the design and specifications. Accordingly, the details represented herein cannot be regarded as final and binding.



JENOPTIK | Laser & Material Processing

JENOPTIK Laser GmbH

Goeschwitzer Strasse 29 | 07745 Jena | Germany

Phone: +49 3641 65-3053 | Fax: +49 3641 65-4011

E-mail: sales-laser.lm@jenoptik.com | www.jenoptik.com/solidstatelasers