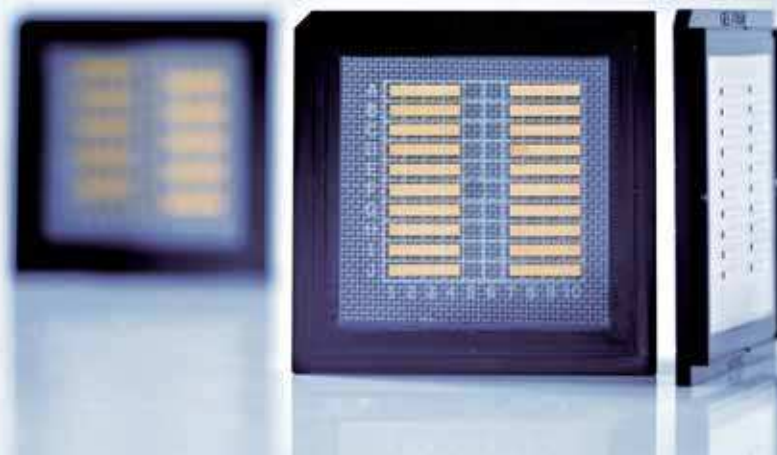




## High Power Diode Laser Bars

880 nm, 100 W cw



JDL-BAB-50-47-880-TE-100-2.0

### Features:

- High laser power
- High efficiency
- Long lifetime, high reliability
- Excellent beam characteristics

### Applications:

- Pumping of solid-state lasers and fiber lasers
- Industrial, scientific and medical systems
- Applications in the printing industry
- Defense and security

# High Power Diode Laser Bars

880 nm, 100 W cw

## Specifications

Product	JDL-BAB-50-47-880-TE-100-2.0				
	Symbol	Min	Nom	Max	Unit
<b>Operation*</b>					
Wavelength (cw)	$\lambda$		<b>885</b>		nm
Optical Output Power	$P_{opt}$		<b>100</b>		W
Operation Mode			<b>cw, switched</b>		
Power Modulation			<b>100</b>		%
<b>Geometrical</b>					
Number of Emitters			<b>47</b>		
Emitter Width	W	95	<b>100</b>	105	$\mu\text{m}$
Emitter Pitch	P		<b>200</b>		$\mu\text{m}$
Filling Factor	F		<b>50</b>		%
Bar Width	B	9600	<b>9800</b>	10000	$\mu\text{m}$
Cavity Length	L	1980	<b>2000</b>	2020	$\mu\text{m}$
Thickness	D	115	<b>120</b>	125	$\mu\text{m}$
<b>Electro Optical Data*</b>					
Fast Axis Divergence (FWHM)	$\theta_{\perp}$		<b>28</b>		$^{\circ}$
Fast Axis Divergence**	$\theta_{\perp}$		<b>47</b>		$^{\circ}$
Slow Axis Divergence at 100 W (FWHM)	$\theta_{\parallel}$		<b>5</b>		$^{\circ}$
Slow Axis Divergence at 100 W**	$\theta_{\parallel}$		<b>7</b>		$^{\circ}$
Pulse Wavelength	$\lambda$		<b>876</b>		nm
Spectral Bandwidth (FWHM)	$\Delta\lambda$		<b>3</b>		nm
Slope Efficiency***	$\eta$		<b>1.2</b>		W/A
Threshold Current	$I_{th}$		<b>19</b>		A
Operating Current	$I_{op}$		<b>102</b>		A
Operating Voltage	$V_{op}$		<b>1.7</b>		V
Series Resistance	$R_s$		<b>2</b>		m $\Omega$
Degree of TE Polarization	$\alpha$	98			%
EO Conversion Efficiency***	$\eta_{tot}$		<b>60</b>		%

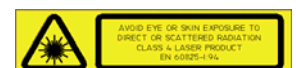
\* Mounted on a heat sink with  $R_{th} = 0.5 \text{ K/W}$ , coolant temperature  $25 \text{ }^{\circ}\text{C}$ , operating at nominal power

\*\* Full width at 95 % power content

\*\*\* Item may change upon notice and acceptance by JENOPTIK Diode Lab GmbH, due to future improvements of technology or processing

Note: Nominal data represents typical values.

Safety Advises: Laser bars are the active components in high-power diode lasers in accordance to IEC standard class 4 laser products. As delivered, laser bars cannot emit any laser beam. The laser beam can only be released if the bars are connected to a source of electrical energy. In this case, IEC-Standard 60825-1 describes the safety regulations to be taken to avoid personal injury.



JENOPTIK | Lasers & Material Processing

JENOPTIK Diode Lab GmbH

Max-Planck-Strasse 2 | 12489 Berlin | Germany

Sales contact: JENOPTIK Laser GmbH | Phone: +49 3641 65-3053 | Fax: -4011

E-mail: sales-laser.lm@jenoptik.com | www.jenoptik.com/diodelasers