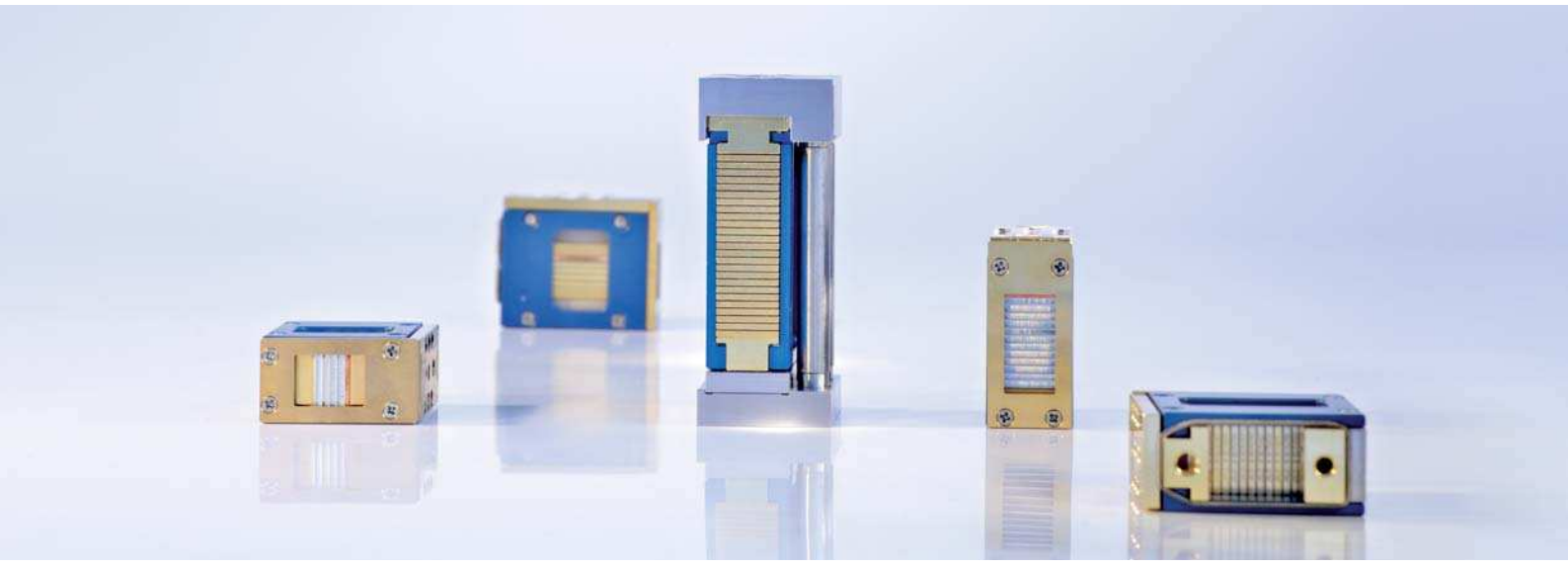




Vertical Diode Laser Stacks

cw, actively cooled



JOLD-x-CANN-xA

Features:

- High optical output power up to 100 W cw per bar
- High efficiency, low divergences
- Lifetime > 10,000 h, high reliability

Design 2104xxx24

- | | |
|-------------------------|--------------------------|
| 210480324 (3 submounts) | 210480824 (8 submounts) |
| 210480424 (4 submounts) | 210481024 (10 submounts) |
| 210480524 (5 submounts) | 210481224 (12 submounts) |
| 210480624 (6 submounts) | 210430624 (25 submounts) |

Applications:

- Pumping of solid-state lasers and fiber lasers
- Material processing
- Medical applications (e.g. hair removal)

Vertical Diode Laser Stacks

cw, actively cooled

Specifications (Start of Life)

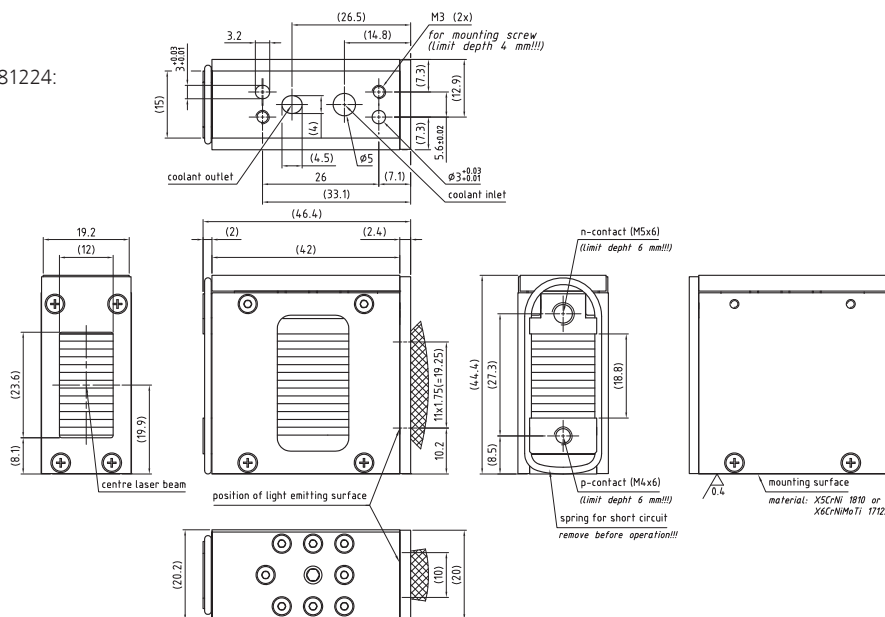
Product JOLD-x-CANN-xA, Designs 210480324 (3 submounts), 210480424 (4 submounts), 210480524 (5 submounts), 210480624 (6 submounts), 210480824 (8 submounts), 210481024 (10 submounts), 210481224 (12 submounts), 210430624 (25 submounts)

Operation Mode	cw, power modulation only between threshold and maximum current																	
Maximum Optical Output Power	240	320	400	480	640	800	960	2000	300	400	500	600	800	1000	1200	2500	W	
Number of Submounts	3	4	5	6	8	10	12	25	3	4	5	6	8	10	12	25		
Power per Submount	80	80	80	80	80	80	80	80	100	100	100	100	100	100	100	100	W	
Center Wavelength at 25 °C	807																938 / 976	nm
Center Wavelength Variation at 25 °C	3	3	3	3	3	3	3	3	5	5	5	5	5	5	5	5	nm	
Typical Spectral Bandwidth (FWHM)	3	3	3	3	3	3	3	3	3	3	3	3	3	3	3	3	nm	
Maximum Spectral Bandwidth (FWHM)	6	6	6	6	6	6	6	6	6	6	6	6	6	6	6	6	nm	
Typical Operation Current	85	85	85	85	85	85	85	85	105	105	105	105	105	105	105	105	A	
Maximum Operation Current	95	95	95	95	95	95	95	95	115	115	115	115	115	115	115	115	A	
Typical Threshold Current	19	19	19	19	19	19	19	19	15	15	15	15	15	15	15	15	A	
Maximum Threshold Current	22	22	22	22	22	22	22	22	18	18	18	18	18	18	18	18	A	
Typical Slope	3.7	4.9	6.1	7.3	8.5	12.2	14.6	30.4	3.4	4.5	5.6	6.7	8.9	11.2	13.4	27.8	W/A	
Minimum Slope	3.1	4.2	5.2	6.3	7.3	10.5	12.6	26.3	3.0	4.0	5.0	6.0	8.0	10.0	12.0	25.0	W/A	
Maximum Operating Voltage	6	8	10	12	16	20	24	50	6	8	10	12	16	20	24	49	V	
Typical Fast Axis Divergence FWHM	37	37	37	37	37	37	37	37	27	27	27	27	27	27	27	27	°	
Typical Fast Axis Divergence 86 %	48	48	48	48	48	48	48	48	34	34	34	34	34	34	34	34	°	
Typical Fast Axis Divergence 95 %	63	63	63	63	63	63	63	63	46	46	46	46	46	46	46	46	°	
Typical Slow Axis Divergence FWHM	6	6	6	6	6	6	6	6	6	6	6	6	6	6	6	6	°	
Typical Slow Axis Divergence 86 %	6	6	6	6	6	6	6	6	6	6	6	6	6	6	6	6	°	
Typical Slow Axis Divergence 95 %	7	7	7	7	7	7	7	7	7	7	7	7	7	7	7	7	°	
Operation Conditions	Cleanroom class 100, non-condensing atmosphere																	
Expected Lifetime	> 10,000 h (constant current)																	
Cooling:																		
Number of Submounts	3	4	5	6	8	10	12	25										
Flow Rate	1.3	1.7	2.0	2.3	3.0	3.6	4.3	8.3									l/min	
Flow Rate Tolerance	± 10 %																	
Water Temperature	15 ... 35 °C																	
Maximum Inlet Pressure	400 kPa																	
Pressure Drop	< 200 kPa																	
Water Quality	Deionized 2 ... 6 µS/cm, mixed bed ion exchanger, particle filter < 25 µm (not included)																	

See Safety and General User Information!

Options on request: 915 nm, for additional designs or specifications please visit our website: www.jenoptik.com

Design 210481224:



JENOPTIK | Lasers & Material Processing

JENOPTIK Laser GmbH

Goeschwitzer Strasse 29 | 07745 Jena | Germany

Phone: +49 3641 65-3053 | Fax: +49 3641 65-4011

E-mail: sales-laser.lm@jenoptik.com | www.jenoptik.com/diodelasers