



1x4 / 1x8 USB / DVI / KVM Switch

1x4 and 1x8 DVI switch models
Switch to two, four or eight computers
Supports video resolutions up to:
2K (2048 x 1080) / WQXGA (2560 x 1600)
Supports DVI-I Dual Link operation
USB 2.0 Hi Speed device support
Stereo audio selection and switching

Features and Benefits

- Full dual link DVI video support
- Available models:
 - 1x4 dual-link DVI-I
 - 1x8 dual-link DVI-I
- Resolutions up to 2560 x 1600
- Select a computer using the front panel switches, hotkeys, or the mouse buttons
- Switch dual link digital video up to 300 Mpixels/sec
- Front panel indicator shows the currently active channel, which peripherals are switched to the active channel, keyboard and mouse activity, OSD status, upgrade mode, and power (Indicators vary depending on model)
- Digital or analogue video support (Analogue requires a converter)
- Supports a wide range of USB 2.0 peripherals (HID and Transparent devices)
- The 1x8 model includes an OSD for easy configuration and port switching
- RS232 serial port for upgrades to the units firmware and for synchronizing two or more Vista DVI plus units so multiple computers/video screens can be switched and accessed
- Flash upgradeable

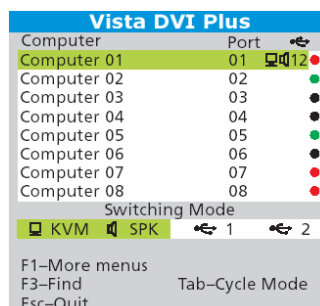
The Vista DVI Plus Advantage . . .

The Vista DVI Plus is the newest addition to Rose Electronics growing line of KVM switches. All Vista DVI Plus models support both digital and analog video, USB keyboards and mice, even specialty keyboards and mice, audio, and two USB 2.0 peripherals.

Switching can be performed where the KVM, USB peripherals, and audio are all switched together to a selected CPU port or you can switch the KVM to CPU port #1, the USB peripherals to CPU port #2, and the audio to CPU port #6.

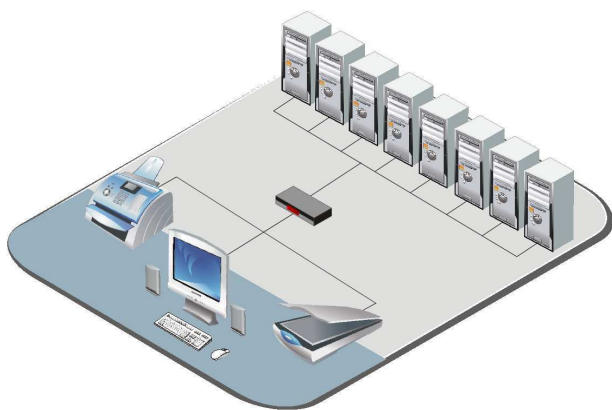
The versatility of Vista DVI Plus makes selective switching easy using either the front panel display, hotkey sequences, or sending serial switching commands from a remote computer via a serial cable.

The Vista DVI Plus can be connected to an additional unit and synchronized to switch video from a dual head computer. Connect video 1 to one unit and video 2 to a second unit. When a switching command is sent to the master unit, it sends the same switching command to the secondary unit. Both units are switched to the same CPU port and video 1 and video 2 are displayed on the attached monitors.



OSD for switching and configuring

Typical Application



Models: The Vista DVI Plus is available in two models; a 1 x 4, and a 1 x 8. All models offer hotkey switching and front panel selection and switching. The 1 x 8 model has an OSD for easy configuration and CPU port switching.

Cables: The cables needed are ;
DVI MM video cable – Vista DVI Plus to computer(s)
USB Type A-B – Vista DVI Plus to computer USB port
3.5mm Stereo audio – Vista DVI Plus to computer audio port

Installation: Installation of the Vista DVI Plus is an easy and simple process. Simply connect the DVI MM cables from the assigned CPU port (1-4 or 1-8), along with a corresponding USB Type A/B cable to the corresponding ports on the Vista DVI unit. Connect a 3.5mm stereo audio cable from the Vista DVI Plus to the audio out port on the computer(s). Directly connect your USB keyboard and mouse, a DVI monitor, and a speaker set to the user console ports.

Operation: Operating the Vista DVI Plus can be performed using the front panel display and switches, hotkey commands from the local keyboard, or sending serial commands to the "Option" port on the unit from a remote computer. The front panel display can be used to switch any connected computer's keyboard, monitor, mouse, USB ports and speakers to the user console. The mode button selects which peripherals are switched to a computer. These peripherals can be switched collectively or linked to separate systems.

On-screen display: The on-screen display is available on the 1x8 model only. Using the on-screen menu allows you to configure the unit functions, preferences, setup, computer list and EDID options. The menu also shows the status of each connected computer and which peripherals are, or will be, connected to each computer.

USB devices: All models support two USB 2.0 devices.

Specifications

P/N	Description
KVM-4TDDL/A1	DVI-I Dual Link, USB 2.0, 1x4
KVM-8TDDL/A1	DVI-I Dual Link, USB 2.0, 1x8
RM-VDP14/19	Rackmount kit (1x4 model only)
KIT-ACC-ATRF/4.0	Serial cable

Dimensions:

	Width (in / mm)	Depth (in / mm)	Height (in / mm)	Weight (lbs / kg)
1x4	9.17 / 233	4.53 / 115	1.75 / 44	1.8 / 0.67
1x8	19.0 / 482	8.5 / 215	1.8 / 45	4.6 / 1.72

Video:

Dual link	DVI-I
Resolution	2K (2048x1080) WQXGA (2560 x 1600)

Connectors:

DVI in	DVI-I female
DVI out	1x4 - DVI-I F 1x8 – DVI-D F / HD15 F
Keyboard	USB Type A
Mouse	USB Type A
Audio	3.5mm Female audio jack
USB2.0	Type A – Peripherals (2) Type B – To Computer (1)
Power	Male barrel jack

Controls:

Front Panel push buttons (Computer / Mode)

Power:

Adapter	100 – 240 VAC 50/60 Hz / +5 VDC / 2A(1x4) - 4A(1x8)
---------	--

Operating Temp.	32°F - 104°F (0°C - 40°C)
-----------------	---------------------------

Approvals: CE, FCC

Rear View



■ Phone: 281-933-7673 ■ E-mail: sales@rose.com ■

10707 Stancliff Rd. Houston, TX 77099

Rose Electronics – Europe: +49 (0)2454 969442 Rose Electronics – Asia: +65 6324 2322

DS-VDVI-P-1x4-8 – 1.4

© Copyright 2010 Rose Electronics. All rights reserved

 **ROSE**
ELECTRONICS
WWW.ROSE.COM