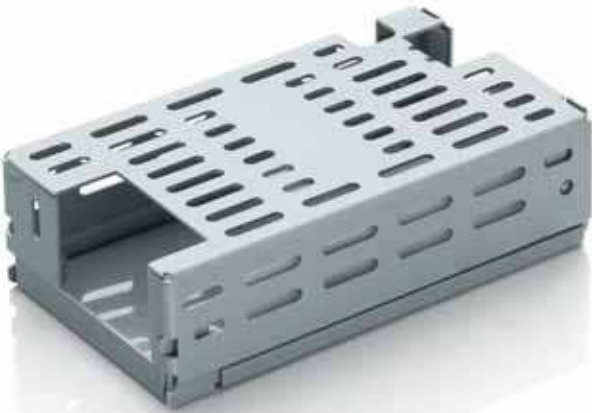


LF(W)VLT60-CK COVER KIT



Features

- Noncorrosive
- Easy assembly
- Low weight
- Fully safe

FOR (W)VLT40, (W)VLT60, M(W)VLT40 & M(W)VLT60 SERIES

Derating Guidelines

VLT40/MVLT40: Ambient > 40°C, derate by 1.3 W/°C to 50°C. 5 CFM recommended to circulate air

VLT60/MVLT60: Ambient > 40°C, derate by 1.3 W/°C to 50°C. 5 CFM recommended to circulate air

Contents

Mounting Base, Cover, Insulator, Fixing Screws

Mechanical Dimensions

Cover and Base Material EG (Zintec) / CRC (Powder coating/Passivation), 1.0 mm

Marked A: PCB MTG; B: COVER MTG; C: SYSTEM MTG, M3 Thread

All dimensions are in mm. General tolerance : +/-0.5

Mechanical Drawing

