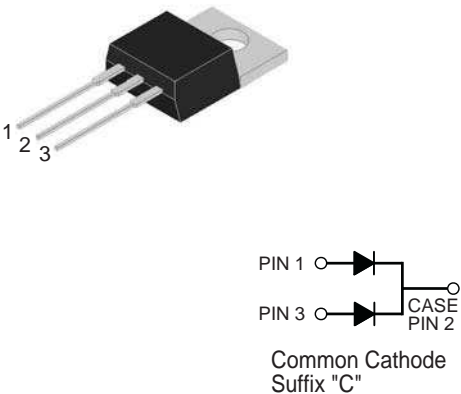


8.0 Amp. Glass Passivated Ultrafast Rectifiers

<p>TO-220AB</p>  <p style="text-align: center;">Common Cathode Suffix "C"</p>	<p>Voltage 200 V to 1000 V</p>	<p>Current 8.0 A</p>	<ul style="list-style-type: none"> Glass passivated chip junction. High efficiency, Low VF High current capability High reliability High surge current capability For use in low voltage, high frequency inverter, free wheeling, and polarity protection application. <p>MECHANICAL DATA</p> <ul style="list-style-type: none"> Cases: TO-220AB Molded plastic Epoxy: UL 94V0 rate flame retardant Terminals: Pure tin plated, lead free, solderable per MIL-STD-202, Method 208 guaranteed Polarity: As marked High temperature soldering guaranteed: 260 °C/10 seconds, 4.06mm from case. Weight: 2.24 grams
---	---	---------------------------------	--

Absolute Maximum Ratings, according to IEC publication No. 134

		HER 0803G	HER 0805G	HER 0806G	HER 0807G	HER 0808G
V_{RRM}	Maximum Recurrent Peak Reverse Voltage (V)	200	400	600	800	1000
V_{RMS}	Maximum RMS Voltage (V)	140	280	420	560	700
V_{DC}	Maximum DC Blocking Voltage (V)	200	400	600	800	1000
$I_{F(AV)}$	Maximum Average Forward Rectified Current @ $T_c = 100\text{ °C}$	8.0 A				
I_{FSM}	Peak Forward Surge Current, 8.3 ms Single Half Sine-wave Superimposed on Rated Load (JEDEC Method)	125 A				
T_{rr}	Maximum Reverse Recovery Time from $I_F = 0.5A$; $I_R = 1A$; $I_{RR} = 0.25A$	50 nS		80 nS		
C_j	Typical Junction Capacitance at 1 MHz and reverse voltage of $4V_{DC}$	80 pF		50 pF		
T_j	Operating Temperature Range	-65 to +150 °C				
T_{stg}	Storage Temperature Range	-65 to +150 °C				

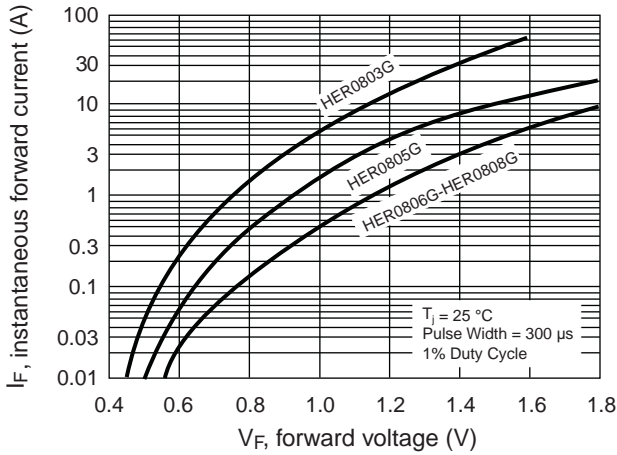
Electrical Characteristics

V_F	Maximum Instantaneous Forward Voltage @ 4.0 A	1.0 V	1.3 V	1.7 V
I_R	Maximum DC Reverse Current @ $T_A = 25\text{ °C}$ at Rated DC Blocking Voltage @ $T_A = 125\text{ °C}$	10 μ A 400 μ A		
R_{thj-c}	Typical Thermal Resistance (See note)	3.0 °C/W		

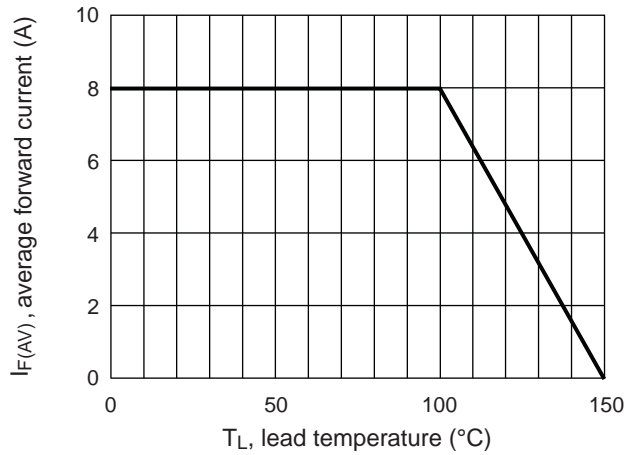
NOTE: Mounted on Heatsink Size of 2 in x 3 in x 0.25 in Al-Plate.

Rating And Characteristic Curves

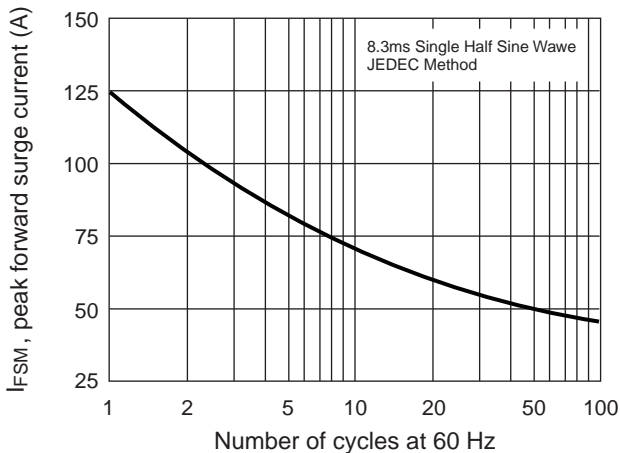
TYPICAL FORWARD CHARACTERISTICS



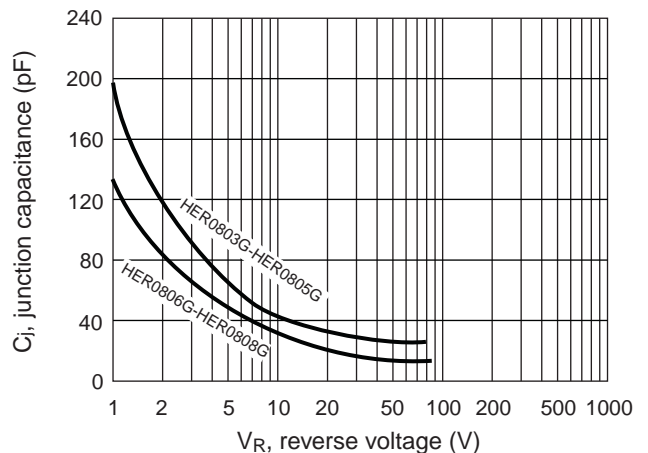
MAXIMUM FORWARD CURRENT DERATING CURVE



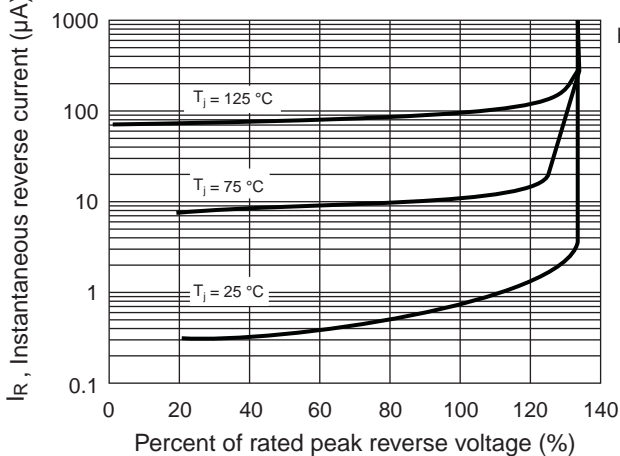
MAXIMUM NON-REPETITIVE FORWARD SURGE CURRENT



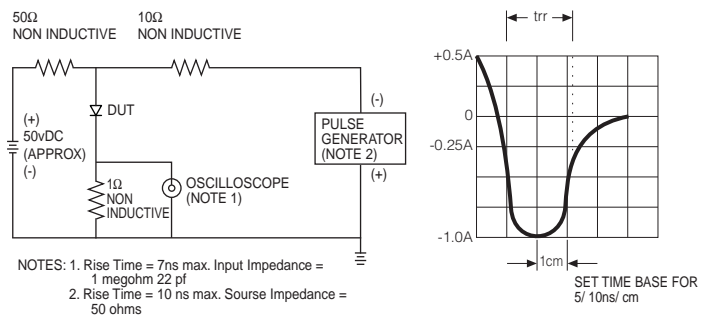
TYPICAL JUNCTION CAPACITANCE



TYPICAL REVERSE CHARACTERISTICS



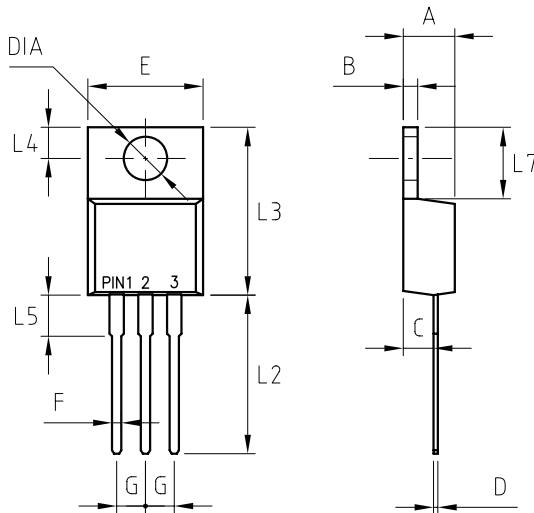
REVERSE RECOVERY TIME CHARACTERISTIC AND TEST CIRCUIT DIAGRAM



10.0 Amp. Glass Passivated Ultrafast Recovery Rectifier

PACKAGE MECHANICAL DATA

TO-220AB



REF.	DIMENSIONS	
	Milimeters	
	Min.	Max.
A	4.44	4.70
B	1.14	1.40
C	2.54	2.79
D	0.35	0.64
E	--	10.5
F	0.68	0.94
G	2.41	2.67
L2	13.46	14.22
L3	14.90	15.10
L4	2.62	2.87
L5	3.56	4.06
L7	5.84	6.86
DIA	3.74	3.91