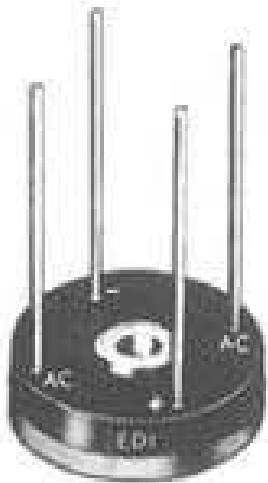




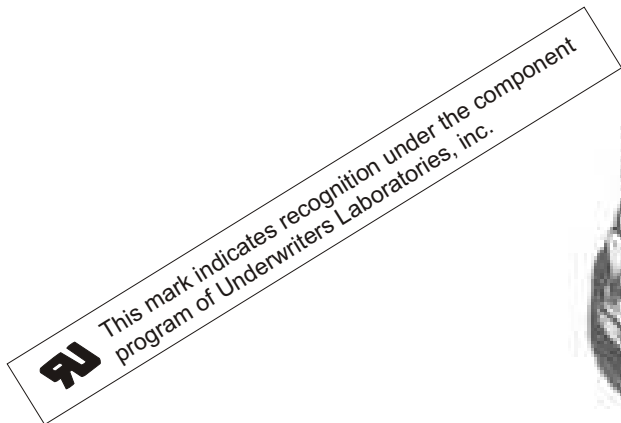
# BRUS2 BRUS2F

## MINIBRIDGE<sup>®</sup>

50 ns. ULTRA-FAST RECOVERY  
 SINGLE-PHASE, FULL-WAVE BRIDGES  
 HEAT SINK • CHASSIS • P.C. BOARD MOUNTING



BRUS2  
 9 Amps. Wire Leads



BRUS 2F  
 10.5 Amps. Quick-connects

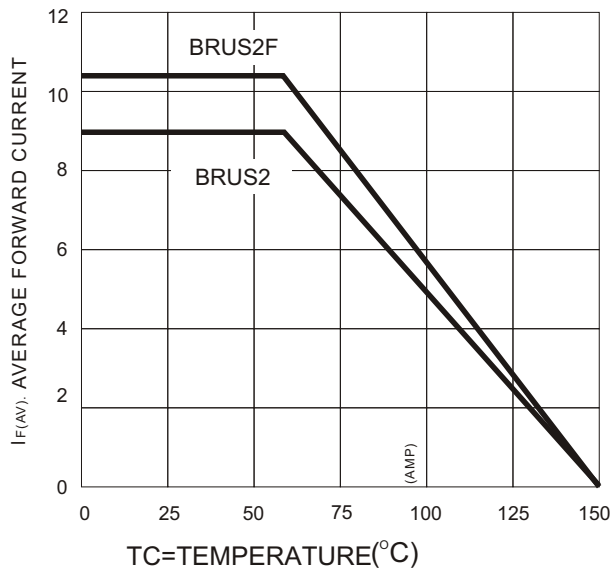
PRV/Leg	50V	100V	200V	400V	600V
9.0 AMP SERIES	BRUS205	BRUS210	BRUS220	BRUS240	BRUS260
10.5AMP SERIES	BRUS205F	BRUS210F	BRUS220F	BRUS240F	BRUS260F

ELECTRICAL CHARACTERISTICS PER LEG (at T <sub>A</sub> =25 °C Unless Otherwise Specified)	BRUS2	BRUS2F	UNITS
Average Output Current I <sub>F</sub> (Av.) T <sub>C</sub> 60 °C (Fig.1)	9.0	10.5	Amps
Max. Forward Voltage Drop, V <sub>F</sub> @I <sub>F</sub> = 2.0	1.3	1.3	Volts
Max.DC Reverse Current @ PRV and 25°C, I <sub>R</sub>	10	10	μA
Max.DC Reverse Current @ PRV and 100°C, I <sub>R</sub>	200	200	μA
Max. Reverse Recovery Time, T <sub>rr</sub> (Fig.4)	50	50	Nanosec.
Max. Peak Surge Current, I <sub>FSM</sub> (8.3ms)	125	125	Amps
Storage Temperature Range, T <sub>STG</sub>	-55 to+150		°C
Thermal Resistance (Total Bridge), R <sub>θj-c</sub>	5.5 typ.	4.5 typ.	°C/W

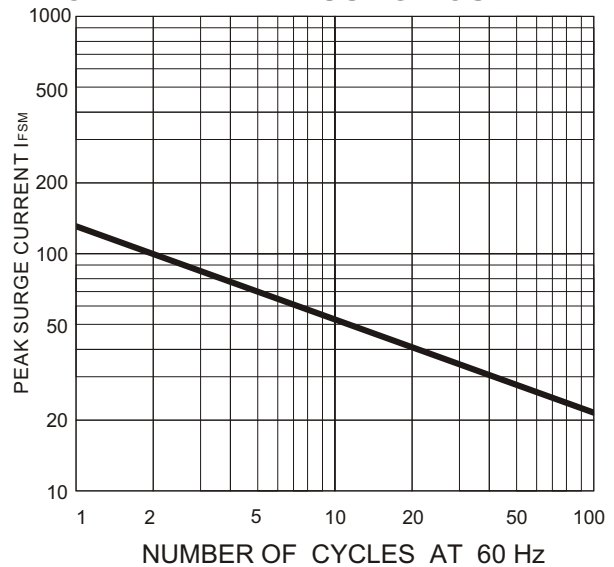
EDI reserves the right to change these specifications at any time without notice.

# BRUS2 BRUS2F

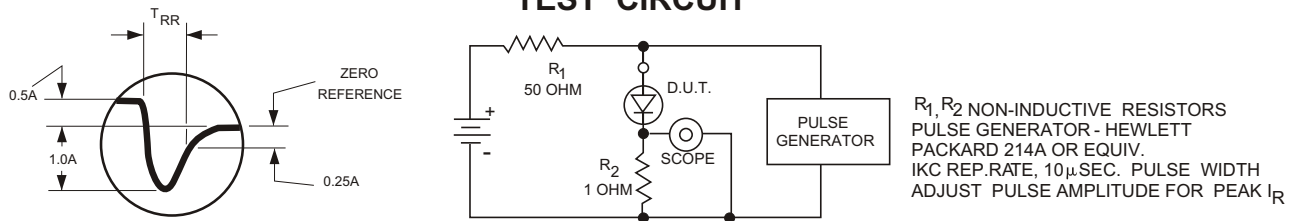
**FIG.1  
CURRENT DERATING**



**FIG.2  
NON-REPETITIVE SURGE CURRENT**



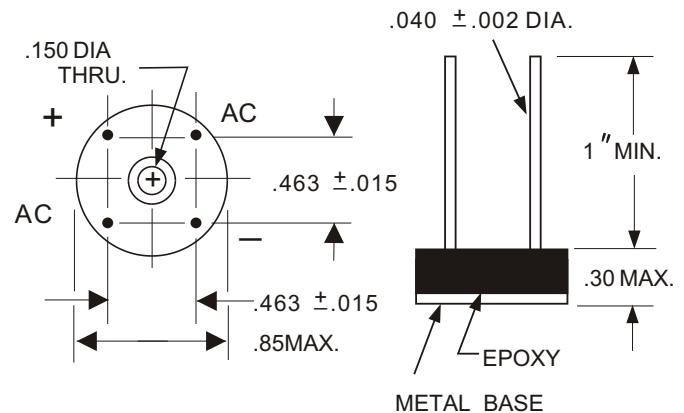
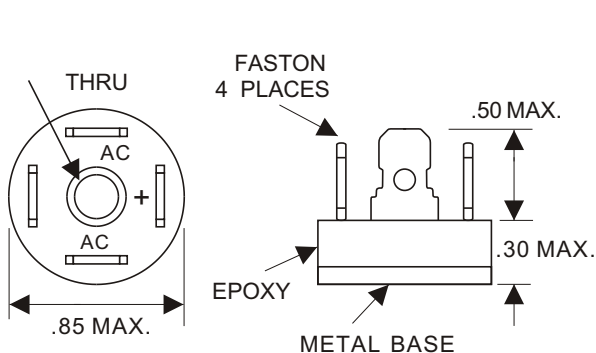
**FIG.3  
TEST CIRCUIT**



## BRUS2-F SERIES MECH. OUTLINE

## BRUS2 SERIES MECH. OUTLINE

Dielectric test voltage 1500 volts rms, max. 50-60Hz



NOTE: A thin film of silicone thermal compound is recommended between the Minibridge<sup>®</sup> case and mounting surface for improved thermal conduction.

**ELECTRONIC DEVICES, INC.** DESIGNERS AND MANUFACTURERS OF SOLID STATE DEVICES SINCE 1951.

21 GRAY OAKS AVENUE \* YONKERS, NEW YORK 10710 914-965-4400 \* FAX 914-965-5531 \* 1-800-678-0828

e-mail:sales@edidiodes.com \* website: <http://www.edidiodes.com>