

OVERVIEW

The CF5707CG is a 32.768kHz reference frequency crystal oscillator CMOS LSI for stepping motor drives in low-current consumption analog watches.

FEATURES

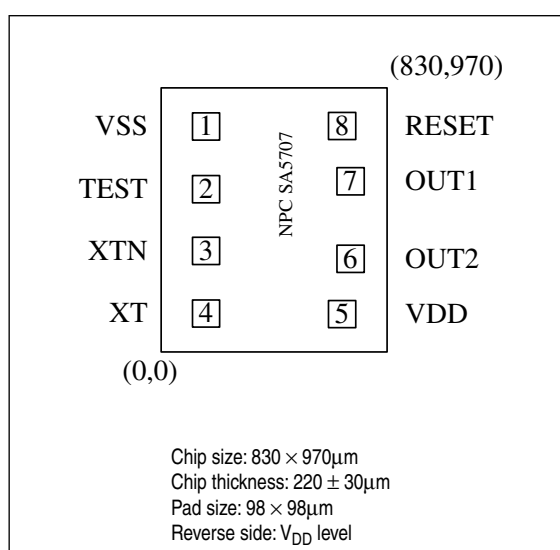
- 32.768kHz crystal oscillator circuit
 - $C_G = 5\text{pF}$, $C_D = 17\text{pF}$ built-in
- -1.2 to -2.0V operating supply voltage range
- 150nA (typ) to 250nA (max) operating current consumption
- Reset function
 - Reset in 4Hz frequency steps

ORDERING INFORMATION

Device	Package
CF5707CG	Chip form

PAD LAYOUT

(Top view)



SPECIFICATIONS

Absolute Maximum Ratings

$$V_{DD} = 0V$$

Parameter	Symbol	Rating	Unit
Supply voltage range	V_{SS}	-5.0 to 0.3	V
Input voltage range	V_{IN}	$V_{SS} - 0.3$ to 0.3	V
Storage temperature range	T_{stg}	-40 to 125	°C

Recommended Operating Conditions

Parameter	Symbol	Rating	Unit
Supply voltage	V_{SS}	-2.0 to -1.2	V
Operating temperature	T_{opr}	-20 to 75	°C

Electrical Characteristics

$V_{DD} = 0V$, $V_{SS} = -1.55V$, $T_a = 25^\circ C$, $(C_{TR} + C_G) = 16pF$, $C_D = 17pF$ (including parasitic capacitance),
 X'tal $C_L = 8pF$, $C_I = 55k\Omega$ max

Parameter	Symbol	Condition	Rating			Unit
			min	typ	max	
Operating supply voltage ¹	V_{SS}		-2.0	-1.55	-1.2	V
Operating current consumption	I_{DD}	No load	–	0.15	0.25	μA
Reset input current ²	I_{RST}	$V_{RST} = V_{DD}$	–	6	–	nA
Reset input resistance	R_{RST}	$V_{RST} = -1.35V$	15	35	60	kΩ
Test input current ³	I_{IH}	$V_{IH} = 0V$	–	1	3	μA
	I_{IL}	$V_{IL} = -1.55V$	–	1	3	μA
Motor output current ¹	I_{MOT}	$R_L = 2k\Omega$, $V_{SS} = -1.55V$	± 0.7	–	–	mA
Movement period	Normal mode	T_{CY}	–	2	–	sec
	Test mode	t_{CY}	–	62.5	–	msec
Motor pulsewidth	T_{PW}		–	3.9	–	msec
Oscillator startup voltage	V_{STA}		-1.3	–	–	V
Oscillator startup time ⁴	T_{STA}		–	2	5	sec
Frequency voltage deviation	$\Delta f/f$	$V_{SS} = -1.2$ to $-2.0V$, $C_{TR} = 5pF$	–	0.2	1	ppm/0.1V
Frequency deviation ⁵	ϵ'		-8	–	8	ppm
Internal capacitance ⁶	C_G	$(C_G + C_D) < 62pF$, C_G , C_D min 5pF	–	5	–	pF
	C_D		–	17	–	pF

1. Parameters measured using the following measurement circuits.

2. The current flowing from the V_{DD} pin into the RESET pin.

3. I_{IH} , I_{IL} are the input current values with clock stopped when TEST is H, L, respectively.

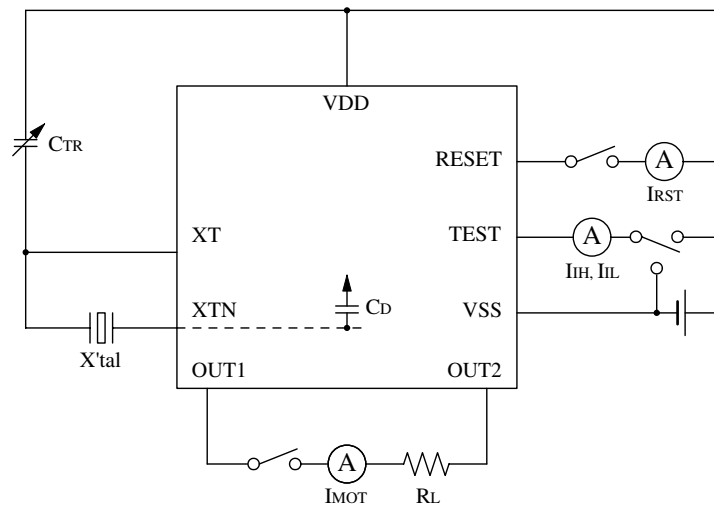
4. The time interval from when power is applied until the 512Hz output on the TEST pin.

5. $\epsilon' = [f(1.55V) - f'_0] / f'_0$

where f'_0 is the oscillator center frequency under the same measurement conditions.

6. C_G is measured between $V_{DD} - XT$, and C_D is measured between $V_{DD} - XTN$. Measurement conditions: $f = 40kHz$, 50mVp-p

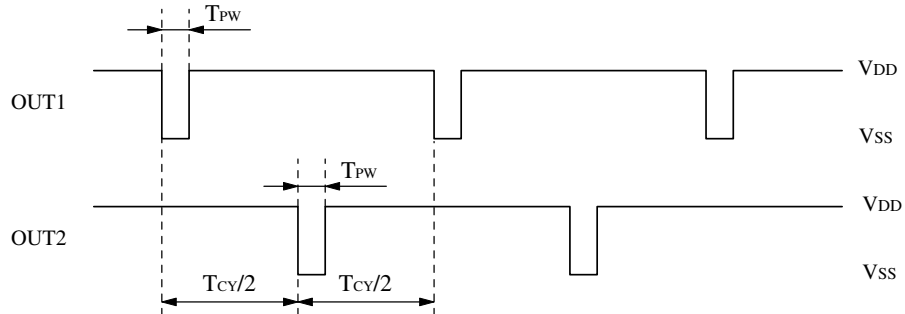
Measurement Circuit



X' tal parameters: $f = 32.768\text{kHz}$, $C_1 = 20\text{k}\Omega$, $C_0 = 1.3\text{pF}$, $C_1 = 2.6\text{fF}$

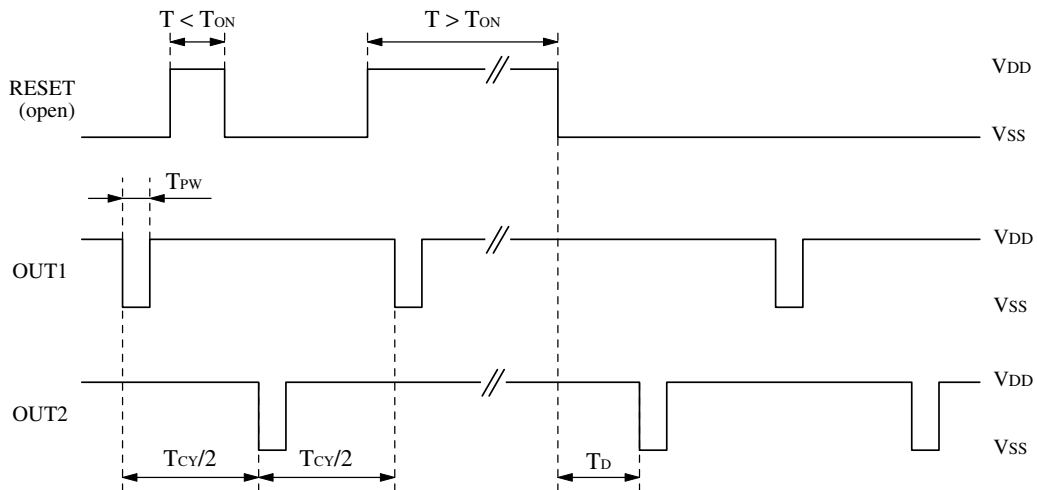
FUNCTIONAL DESCRIPTION

Motor Output Waveform



Watch movement period $T_{cy} = 2s$, Pulsewidth $T_{pw} = 3.9ms$

Reset Function



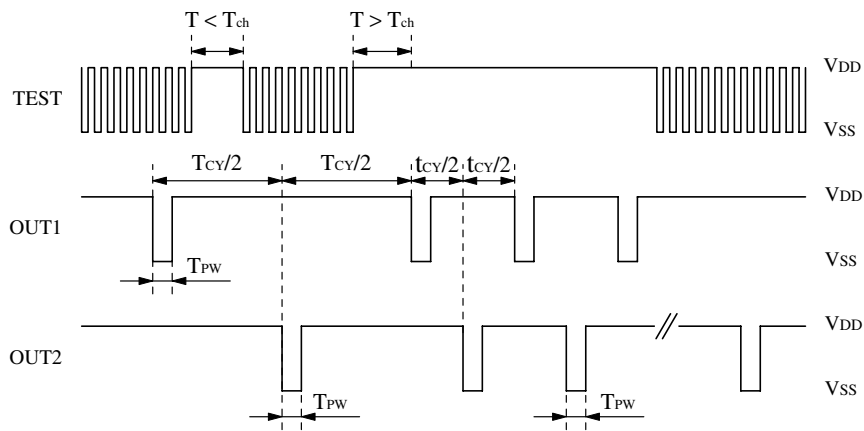
Reset operation

The device reset condition occurs when the RESET pin goes HIGH (V_{DD}), and the circuits are reset in 4Hz frequency divider steps. Note, however, that RESET must stay HIGH for 93.7ms or longer, otherwise the reset input is ignored.

Reset release operation

If the last pulse before reset was output on OUT1, then the first pulse after reset is released is output on OUT2, and vice versa. The time interval, T_D , after reset is released until the first pulse output occurs is $T_{CY}/2 - 0.125s$ to $T_{CY}/2$.

Test Function



Test mode 1

Normal mode (TEST = open)

A 512Hz rectangular waveform is output on the TEST pin. Note that the load resistance is $10M\Omega$ or greater and capacitance is 20pF or less. Normal watch movement waveforms are output on OUT1 and OUT2.

Test mode 1 (TEST = V_{DD})

The device switches to test mode 1 when the TEST pin goes HIGH (V_{DD}). Note, however, that the TEST must stay HIGH for 2 cycles of the 512Hz clock ($T_{CH} > 3.9ms$), otherwise the input is ignored. In test mode 1, high-speed watch movement period ($T_{CY} = 62.5ms$) is selected.

Test mode 2 (TEST = V_{SS})

(Note. IC test mode only)

The device switches to test mode 2 when the TEST pin goes LOW (V_{SS}). In test mode 2, operation occurs at 32-times speed. Furthermore, if an input on RESET occurs, all internal registers are cleared and circuit operation stops. Once in this condition, the circuit remains stopped until the TEST pin becomes open circuit or HIGH level (V_{DD}).

Please pay your attention to the following points at time of using the products shown in this document.

The products shown in this document (hereinafter "Products") are not intended to be used for the apparatus that exerts harmful influence on human lives due to the defects, failure or malfunction of the Products. Customers are requested to obtain prior written agreement for such use from SEIKO NPC CORPORATION (hereinafter "NPC"). Customers shall be solely responsible for, and indemnify and hold NPC free and harmless from, any and all claims, damages, losses, expenses or lawsuits, due to such use without such agreement. NPC reserves the right to change the specifications of the Products in order to improve the characteristic or reliability thereof. NPC makes no claim or warranty that the contents described in this document dose not infringe any intellectual property right or other similar right owned by third parties. Therefore, NPC shall not be responsible for such problems, even if the use is in accordance with the descriptions provided in this document. Any descriptions including applications, circuits, and the parameters of the Products in this document are for reference to use the Products, and shall not be guaranteed free from defect, inapplicability to the design for the mass-production products without further testing or modification. Customers are requested not to export or re-export, directly or indirectly, the Products to any country or any entity not in compliance with or in violation of the national export administration laws, treaties, orders and regulations. Customers are requested appropriately take steps to obtain required permissions or approvals from appropriate government agencies.

The logo for SEIKO NPC CORPORATION, consisting of the letters 'NPC' in a bold, black, sans-serif font.

SEIKO NPC CORPORATION

1-9-9, Hatchobori, Chuo-ku,
Tokyo 104-0032, Japan
Telephone: +81-3-5541-6501
Facsimile: +81-3-5541-6510
<http://www.npc.co.jp/>
Email: sales@npc.co.jp

NC0419CE 2006.09