

OVERVIEW

The CF5705 series are low-current analog watch stepping motor driver CMOS ICs with built-in 32.768kHz crystal oscillator circuit.

FEATURES

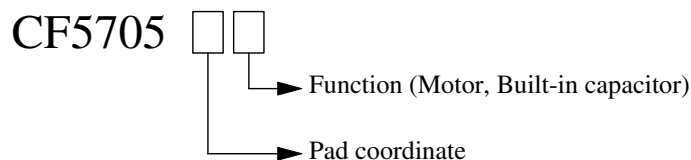
- 32.768kHz crystal oscillator circuit
C_G and C_D built-in
- -3.6 to -1.2V operating supply voltage range
- Operating current consumption
 - V_{SS} = -1.55V, C_D = 16pF: 250nA (max)
 - V_{SS} = -2.8V, C_D = 26pF: 1000nA (max)
 Note: Current consumption depends on the built-in capacitor.
- Reset function
4Hz and subsequent frequency dividers are reset

SERIES LINEUP

Version	Pad coordinates								Motor			Built-in capacitor ¹	
	1	2	3	4	5	6	7	8	Cycle (Tcy/2) [sec]	Pulse (Tpw) [sec]	Test (Tcy) [sec]	C _G [pF]	C _D [pF]
CF5705AA	XT	XTN	RESET	VSS	TEST	OUT2	OUT1	VDD	1	4.9m	125m	4	16
CF5705AD	XT	XTN	RESET	VSS	TEST	OUT2	OUT1	VDD	1	23.4m	125m	4	30
CF5705AE	XT	XTN	RESET	VSS	TEST	OUT2	OUT1	VDD	20	5.9m	125m	4	16
CF5705AK	XT	XTN	RESET	VSS	TEST	OUT2	OUT1	VDD	62.5m	23.4m	125m	4	30
CF5705BC	VSS	RESET	XT	XTN	VDD	OUT2	OUT1	TEST	250m	23.4m	125m	4	26
CF5705BJ	VSS	RESET	XT	XTN	VDD	OUT2	OUT1	TEST	1	23.4m	125m	4	26
CF5705CF	VSS	TEST	XTN	XT	VDD	OUT2	OUT1	RESET	1	4.9m	62.5m	4	16
CF5705CG	VSS	TEST	XTN	XT	VDD	OUT2	OUT1	RESET	1	3.9m	62.5m	4	16

1. Parasitic capacitance is included. Parasitic capacitance: C_G = C_D = 4pF

PART NUMBER GUIDE

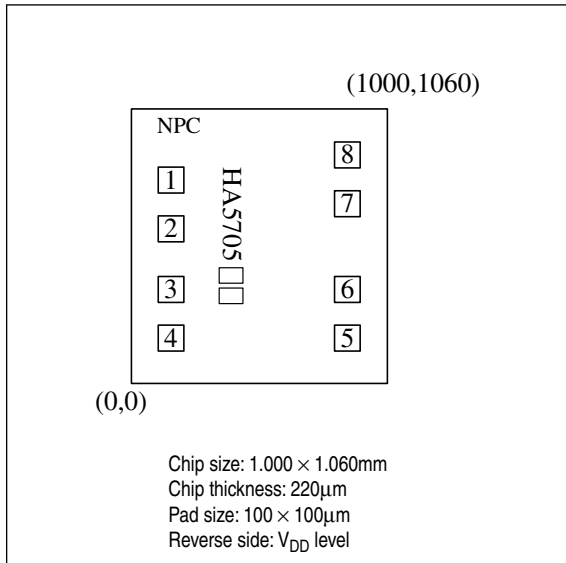


ORDERING INFORMATION

Device	Package
CF5705xx	Chip form

PAD DIMENSIONS

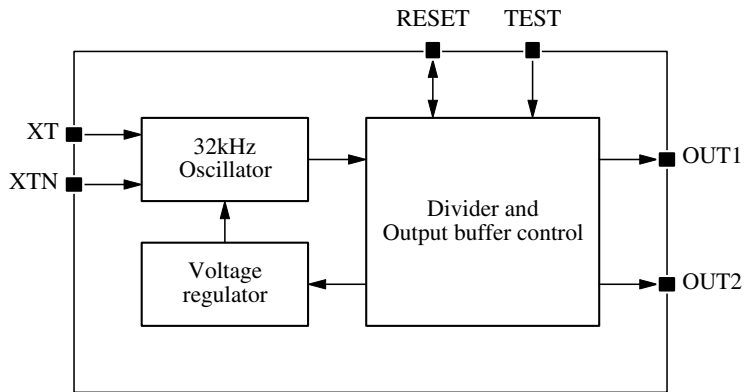
(Unit: μm)



PAD COORDINATES

Number	X [μm]	Y [μm]
1	155	785
2	155	597
3	155	363
4	155	175
5	844	175
6	844	363
7	844	694
8	844	882

BLOCK DIAGRAM



PAD DESCRIPTION

Name	Description
VSS	Negative supply voltage
VDD	Positive supply voltage
XT	Crystal oscillator circuit input
XTN	Crystal oscillator circuit output
OUT1	Stepping motor driver output 1
OUT2	Stepping motor driver output 2
RESET	Reset input
TEST	Test mode select. 512Hz clock output

Pin number: Refer to Series lineup.

SPECIFICATIONS

Absolute Maximum Ratings

$$V_{DD} = 0V$$

Parameter	Symbol	Rating	Unit
Supply voltage range	V_{SS}	-5.0 to 0.3	V
Input voltage range	V_{IN}	$V_{SS} - 0.3$ to 0.3	V
Storage temperature range	T_{stg}	-40 to 125	°C

Recommended Operating Conditions

Parameter	Symbol	Rating	Unit
Supply voltage	V_{SS}	-3.6 to -1.2	V
Operating temperature	T_{opg}	-20 to 75	°C

Electrical Characteristics

$$V_{DD} = 0V, T_a = 25^\circ C, X'tal C_1 = 55k\Omega \text{ max}$$

Parameter	Symbol	Condition	Rating			Unit
			min	typ	max	
Operating supply voltage	V_{SS}		-3.6	-	-1.2	V
Operating current consumption ¹	I_{DD}	No load, $V_{SS} = -1.55V$, ($C_{TR} + C_G$) = 15pF, $C_D = 16pF$	-	0.15	0.25	μA
		No load, $V_{SS} = -2.8V$, ($C_{TR} + C_G$) = 24pF, $C_D = 26pF$	-	0.40	1.00	μA
Reset input current	I_{RST}	RESET: $V_{RST} = V_{DD}$, $V_{SS} = -1.55V$	-	6	-	nA
		RESET: $V_{RST} = V_{DD}$, $V_{SS} = -2.8V$	-	25	100	nA
Reset input resistance	R_{RST}	$V_{RST} = -1.35V$, $V_{SS} = -1.55V$	15	35	60	kΩ
		$V_{RST} = -2.6V$, $V_{SS} = -2.8V$	5	15	50	kΩ
Motor output current	I_{MOT}	$R_L = 2k\Omega$, $V_{SS} = -1.55V$	0.7	-	-	mA
		$R_L = 1k\Omega$, $V_{SS} = -2.4V$	2.18	2.29	-	mA
Motor output cycle time ² (normal mode)	T_{CY}		Refer to the SERIES LINEUP			s
Motor output cycle time ² (test mode)	t_{CY}					ms
Motor output pulsewidth ²	T_{PW}					ms
Oscillator start voltage ²	V_{STA}		-1.3	-	-	V
Oscillator start time	T_{STA}	From supply ON to 512Hz output on TEST	-	2	5	s
Frequency voltage deviation	$\Delta f/f$	$V_{SS} = -1.2 \rightarrow -3.6V$, $C_{TR} = 5pF$	-	0.2	1	ppm/0.1V
Frequency deviation ³	ϵ'	Built-in C_D	-8	-	8	ppm
		Built-in C_D and C_G	-16	-	16	ppm
Internal capacitance ²	C_G, C_D	$(C_G + C_D) < 62pF$	Refer to the SERIES LINEUP			pF

1. Current consumption is measured in the measurement circuit (see next page).

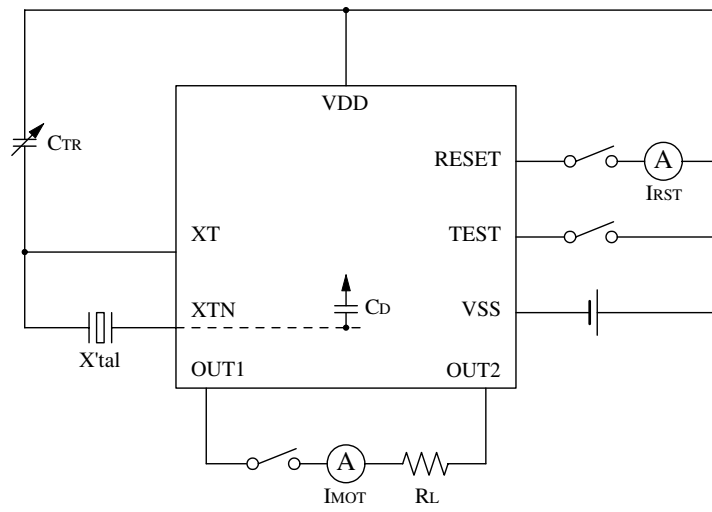
2. Refer to Series lineup.

3. $\epsilon' = [f(1.55V) - f'_0] / f'_0$ ($C_D = 16pF$)

$\epsilon' = [f(2.8V) - f'_0] / f'_0$ ($C_D = 26pF$)

f'_0 : Oscillation frequency center value of Standard Deviation in the same measuring conditions

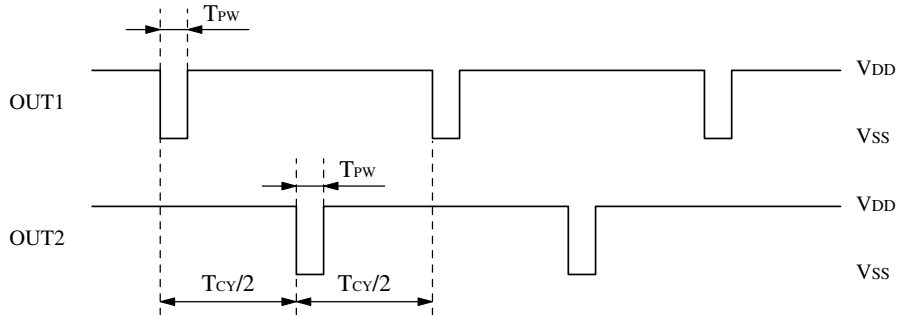
Measurement Circuit



Crystal: $f = 32.768\text{kHz}$, $C1 = 20\text{k}\Omega$, $C0 = 1.3\text{pF}$, $C1 = 2.6\text{fF}$

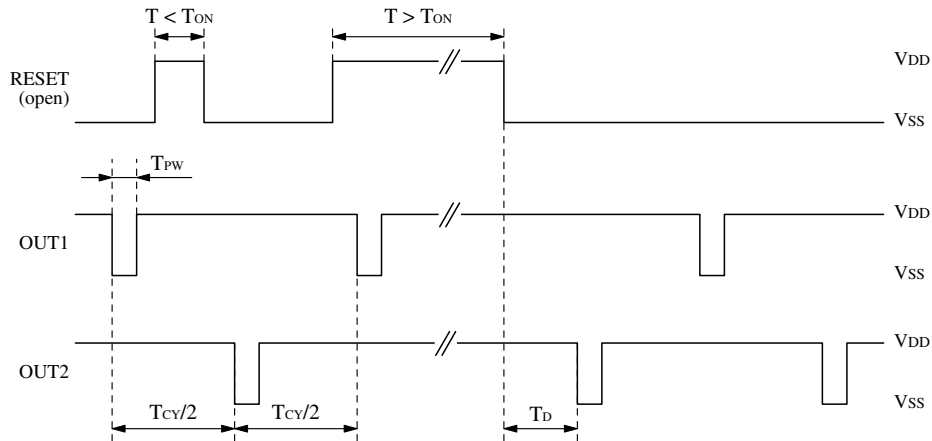
FUNCTIONAL DESCRIPTION

Motor Output Waveform



The motor output waveform cycle time and output pulsewidth are set by mask option.

Reset Function



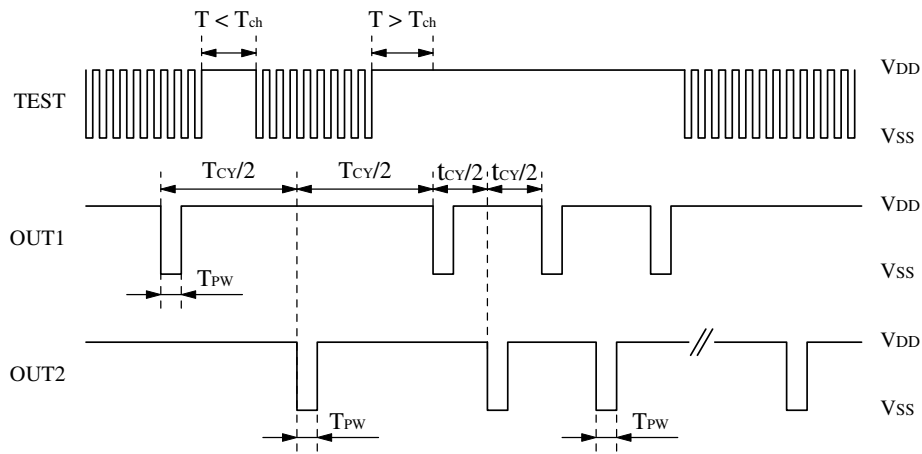
Reset operation

A reset operation occurs when RESET is held HIGH (V_{DD}) for a period of 93.75ms or greater, otherwise the reset is ignored. When the reset pulse is valid, the 4Hz and subsequent frequency dividers are reset.

Reset Release

When the reset is released, the first output pulse occurs on the output pin opposite the output pin where the preceding motor drive output pulse occurred; first pulse occurs on OUT1 if previous motor drive pulse occurred on OUT2, and vice versa. A delay of $T_{CY}/2 - 0.125$ to $T_{CY}/2$ takes place from when reset is released until the first output pulse occurs.

Test Function



Normal mode (TEST = open circuit)

In test mode, a 512Hz rectangular wave is output on TEST. Note that the output load (probe) must be greater than $10M\Omega$ and less than $20pF$. The motor drive outputs on OUT1 and OUT2 continue to operate normally.

Test mode 1 (TEST = V_{DD})

Test mode 1 is invoked when TEST is held HIGH for a minimum of 2 cycles of the 512Hz clock ($T_{CH} > 3.9ms$), otherwise it is ignored. In test mode 1, high-speed motor output operation occurs, with the cycle time set by mask option to 62.5 or 125ms.

Test mode 2 (TEST = V_{SS})

Test mode 2 is a dedicated IC test mode. In test mode 2, the device operates at 32-times speed, with the supply voltage connected directly to the oscillator circuit. Note that if a reset input occurs, the internal operation is reset and device output stops. Once operation stops, normal operation is not restored until TEST is either open circuit or goes LOW.

Please pay your attention to the following points at time of using the products shown in this document.

The products shown in this document (hereinafter "Products") are not intended to be used for the apparatus that exerts harmful influence on human lives due to the defects, failure or malfunction of the Products. Customers are requested to obtain prior written agreement for such use from SEIKO NPC CORPORATION (hereinafter "NPC"). Customers shall be solely responsible for, and indemnify and hold NPC free and harmless from, any and all claims, damages, losses, expenses or lawsuits, due to such use without such agreement. NPC reserves the right to change the specifications of the Products in order to improve the characteristic or reliability thereof. NPC makes no claim or warranty that the contents described in this document do not infringe any intellectual property right or other similar right owned by third parties. Therefore, NPC shall not be responsible for such problems, even if the use is in accordance with the descriptions provided in this document. Any descriptions including applications, circuits, and the parameters of the Products in this document are for reference to use the Products, and shall not be guaranteed free from defect, inapplicability to the design for the mass-production products without further testing or modification. Customers are requested not to export or re-export, directly or indirectly, the Products to any country or any entity not in compliance with or in violation of the national export administration laws, treaties, orders and regulations. Customers are requested appropriately take steps to obtain required permissions or approvals from appropriate government agencies.

The logo for NPC (Seiko NPC Corporation) consists of the letters 'NPC' in a bold, black, sans-serif font. The 'N' and 'P' are connected at the top, and the 'C' is positioned to the right of the 'P'.

SEIKO NPC CORPORATION

1-9-9, Hatchobori, Chuo-ku,
Tokyo 104-0032, Japan
Telephone: +81-3-5541-6501
Facsimile: +81-3-5541-6510
<http://www.npc.co.jp/>
Email: sales@npc.co.jp

NC9815CE 2006.04