

60A Avg.

600 Volts

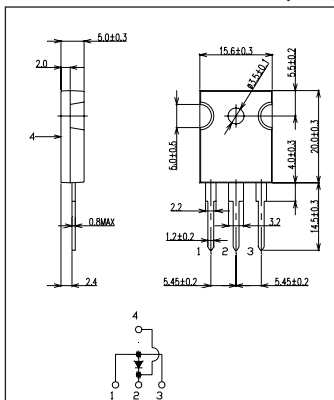
FRED

KSF60A60B

■最大定格 Maximum Ratings

Item	Symbol	Conditions	Unit
くり返しピーク逆電圧 Repetitive Peak Reverse Voltage	V_{RRM}	600	V
平均整流電流 Average Rectified Forward Current	I_O	50Hz、正弦半波通電抵抗負荷 50Hz Half Sine Wave Resistive Load	$T_c=57^\circ\text{C}$ 60
実効順電流 R.M.S. Forward Current	$I_F(\text{RMS})$	94.2	A
サージ順電流 Surge Forward Current	I_{FSM}	600 50Hz正弦半波、1サイクル、非くり返し 50Hz Half Sine Wave, 1cycle, Non-repetitive	A
動作接合温度範囲 Operating Junction Temperature Range	T_{jw}	-40~+150	$^\circ\text{C}$
保存温度範囲 Storage Temperature Range	T_{stg}	-40~+150	$^\circ\text{C}$
締付トルク Mounting torque	F_{tor}	推奨値 Recommended Value	0.5 N·m

■OUTLINE DRAWING(mm)



■APPROX. NET WEIGHT:5.55g

■電氣的・熱的特性 Electrical/Thermal Characteristics

Item	Symbol	Conditions	Min.	Typ.	Max.	Unit
ピーク逆電流 Peak Reverse Current	I_{RM}	$T_j=25^\circ\text{C}, V_{RM}=V_{RRM}$	—	—	50	μA
ピーク順電圧* Peak Forward Voltage	V_{FM}	$T_j=25^\circ\text{C}, I_{FM}=60\text{A}$	—	—	1.7	V
逆回復時間 Reverse Recovery Time	t_{rr}	$I_{FM}=10\text{A}, -di/dt=50\text{A}/\mu\text{s}, T_j=25^\circ\text{C}$	—	—	75	ns
熱抵抗 Thermal Resistance	$R_{th(j-c)}$	接合部・ケース間 Junction to Case	—	—	0.7	$^\circ\text{C}/\text{W}$

*アノード電極両側通電時

■定格・特性曲線

