

30A Avg.

300 Volts

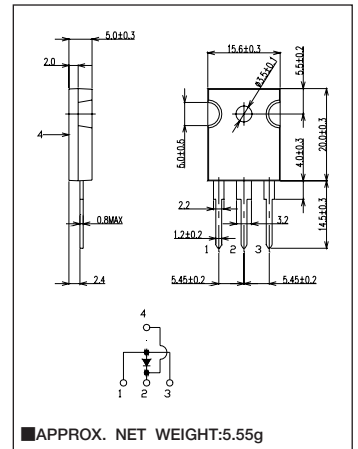
FRED

KSU30A30B

■最大定格 Maximum Ratings

| Item | Symbol | Conditions | Unit |
|--|--------------|---|-----------------------------|
| くり返しピーク逆電圧 Repetitive Peak Reverse Voltage | V_{RRM} | 300 | V |
| 平均整流電流* Average Rectified Forward Current | I_O | 50Hz、正弦半波通電抵抗負荷 50Hz Half Sine Wave Resistive Load | $T_c=89^\circ\text{C}$ 30 A |
| 実効順電流* R.M.S. Forward Current | $I_{F(RMS)}$ | 47 | A |
| サージ順電流* Surge Forward Current | I_{FSM} | 400 50Hz正弦半波、1サイクル、非くり返し 50Hz Half Sine Wave, 1cycle, Non-repetitive | A |
| 動作接合温度範囲 Operating Junction Temperature Range | T_{jw} | -40~+150 | $^\circ\text{C}$ |
| 保存温度範囲 Storage Temperature Range | T_{stg} | -40~+150 | $^\circ\text{C}$ |
| 締付トルク Mounting torque | F_{tor} | 推奨値 Recommended Value | 0.5 N·m |

■OUTLINE DRAWING(mm)



■電氣的・熱的特性 Electrical/Thermal Characteristics

| Item | Symbol | Conditions | Min. | Typ. | Max. | Unit |
|---------------------------------|---------------|--|------|------|------|---------------------------|
| ピーク逆電流 Peak Reverse Current | I_{RM} | $T_j=25^\circ\text{C}, V_{RM}=V_{RRM}$ | — | — | 50 | μA |
| ピーク順電圧* Peak Forward Voltage | V_{FM} | $T_j=25^\circ\text{C}, I_{FM}=30\text{A}$ | — | 1.13 | 1.33 | V |
| 逆回復時間 Reverse Recovery Time | t_{rr} | $I_{FM}=10\text{A}, -di/dt=50\text{A}/\mu\text{s}, T_j=25^\circ\text{C}$ | — | 33 | 45 | ns |
| 熱抵抗 Thermal Resistance | $R_{th(j-c)}$ | 接合部・ケース間 Junction to Case | — | — | 1.4 | $^\circ\text{C}/\text{W}$ |

*アノード電極両側通電時

■定格・特性曲線

