

60A Avg.

40 Volts

SBD

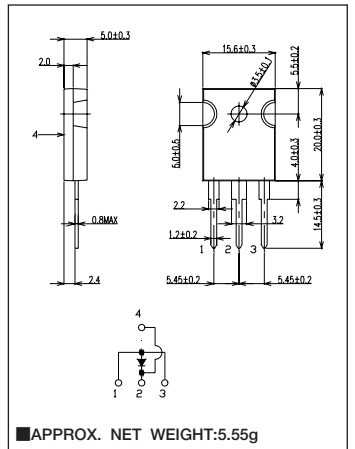
KSQ60A04B

最大定格 Maximum Ratings

Item	Symbol	Conditions	Unit
くり返しピーク逆電圧 Repetitive Peak Reverse Voltage	V_{RRM}	40	V
平均整流電流* Average Rectified Forward Current	I_O	50Hz、正弦半波通電抵抗負荷 50Hz Half Sine Wave Resistive Load	$T_C=100^{\circ}C$ 60
実効順電流* R.M.S. Forward Current	$I_F(RMS)$	94.2	A
サーージ順電流* Surge Forward Current	I_{FSM}	700 50Hz正弦半波、1サイクル、非くり返し 50Hz Half Sine Wave, 1cycle, Non-repetitive	A
動作接合温度範囲 Operating Junction Temperature Range	T_{jw}	-40~+150	$^{\circ}C$
保存温度範囲 Storage Temperature Range	T_{stg}	-40~+150	$^{\circ}C$
締付トルク Mounting torque	F_{tor}	推奨値 Recommended Value	0.5 N·m

*アノード電極両側通電時 Anode Terminals 1 and 3 Connected

OUTLINE DRAWING(mm)



電氣的・熱的特性 Electrical/Thermal Characteristics

Item	Symbol	Conditions	Min.	Typ.	Max.	Unit
ピーク逆電流 Peak Reverse Current	I_{RM}	$T_j=25^{\circ}C, V_{RM}=V_{RRM}$	—	—	40	mA
ピーク順電圧* Peak Forward Voltage	V_{FM}	$T_j=25^{\circ}C, I_{FM}=60A$	—	—	0.62	V
熱抵抗 Thermal Resistance	$R_{th(j-c)}$	接合部・ケース間 Junction to Case	—	—	0.75	$^{\circ}C/W$

*アノード電極両側通電時 Anode Terminals 1 and 3 Connected

定格・特性曲線

