

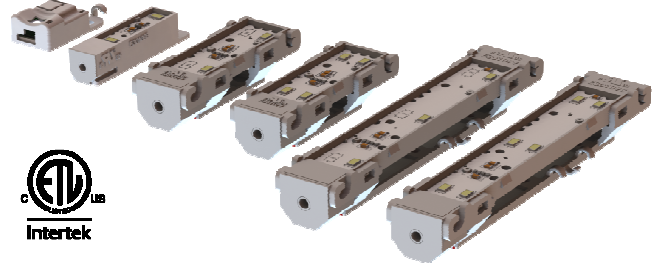
Specification Sheet

Virgolite™ Modules Family



A modular system of unmatched flexibility

Date : _____
 Client : _____
 Project : _____
 Type : _____
 Purchase order number : _____
 Quantity : _____



Designed for the architectural lighting industry, the Virgolite™ LED modules are part of the HEICO lighting™ Contactless LED System. For fast and easy installation the LED modules are inserted on one electrical conductor connected to the LED Master Power Supply (LMPS). The AC power of the LMPS is fed by electromagnetic induction to the LED module, which eliminates electrical contacts and risks of corrosion.

The LS2, LS3, LS4, LS6 and XS modules are available in white at 3000K, 3500K and 6500K. They are entirely encapsulated and suitable for use in dry, damp and wet applications (suitable for wet locations when used with power supply model LMPS-350).


The X and XS modules are available in amber, blue, green and red. They are entirely encapsulated and suitable for use in dry, damp and wet applications (suitable for wet locations when used with power supply model LMPS-350).

The LS1 module is available in white (6500K). It has a conformal coating and is suitable for use in dry and damp applications. The LS1 module is clipped on the electrical conductor.

Benefits

- More than 90% efficiency
- Patented induction power technology
- Fast and easy installation
- No polarity
- 5-year warranty
- Designed and manufactured in North America

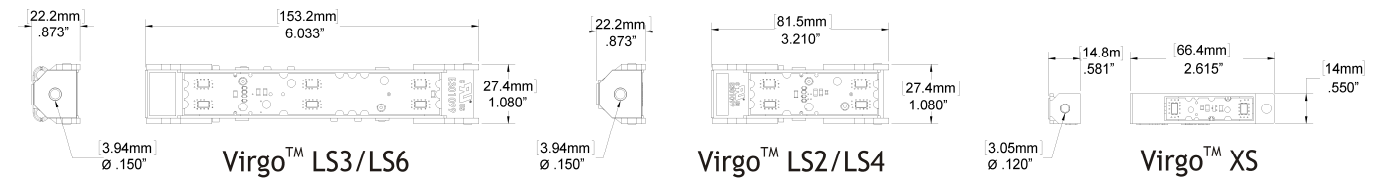
Characteristics

	Virgo+™ LS	Virgo™ X	Virgo™ XS	Virgo+™ LS1
Input Power	Only from the following Class 2 power supplies: LMPS-350, LMPS-DC350 or LMPS-750			
Dimming Option	Only with: LMPS-Dimmer Controller and LMPS-Dimmer Extender			
Beam Angle	120 °			
LED Color Spectrum	White 3000K, 3500K, 6500K	Amber, blue, green and red	White 3000K, 3500K, 6500K, amber, blue, green and red	White 6500K
Chromaticity Tolerance	3-Step MacAdam ellipse	N/A	3-Step MacAdam ellipse (white only)	3-Step MacAdam ellipse
Ambient Operating Temperature	-40°F to 122°F (-40°C to 50°C)			
Operating Environment	Dry and damp locations (with LMPS-350 and LMPS-750), wet locations (only with LMPS-350)			Dry and damp locations
Ingress Protection Rating	IP67			IP66
Warranty	5 years			
Overall Length	Short: 3.210" (81.5 mm)	Long: 6.033" (153.2 mm)	XS: 2.615" (66.4 mm)	1.695" (43.1mm)
Weight	Short: 0.074 lbs (33.3 g)	Long: 0.109 lbs (49.3 g)	0.027 lbs (12.2 g)	0.02 lbs (9 g)
Housing	White ABS Plastic			White Polycarbonate
Certification	 Luminares			

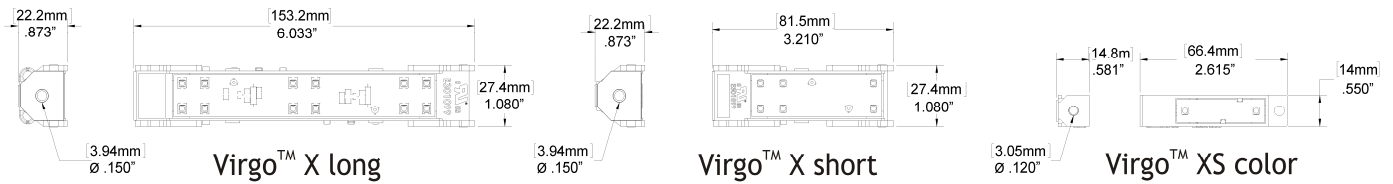


The Virgolite™ LED modules shall only be used with the following Class 2 power supplies: LMPS-350, LMPS-DC350 or LMPS-750. Failure to comply will void all warranties and ETL listings.

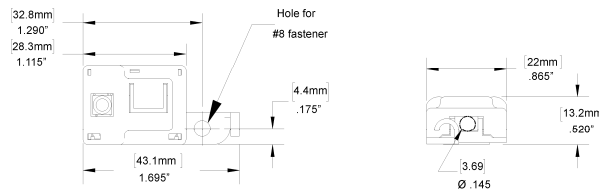
Dimensions Virgo+™ LS2, LS3, LS4, LS6 and XS



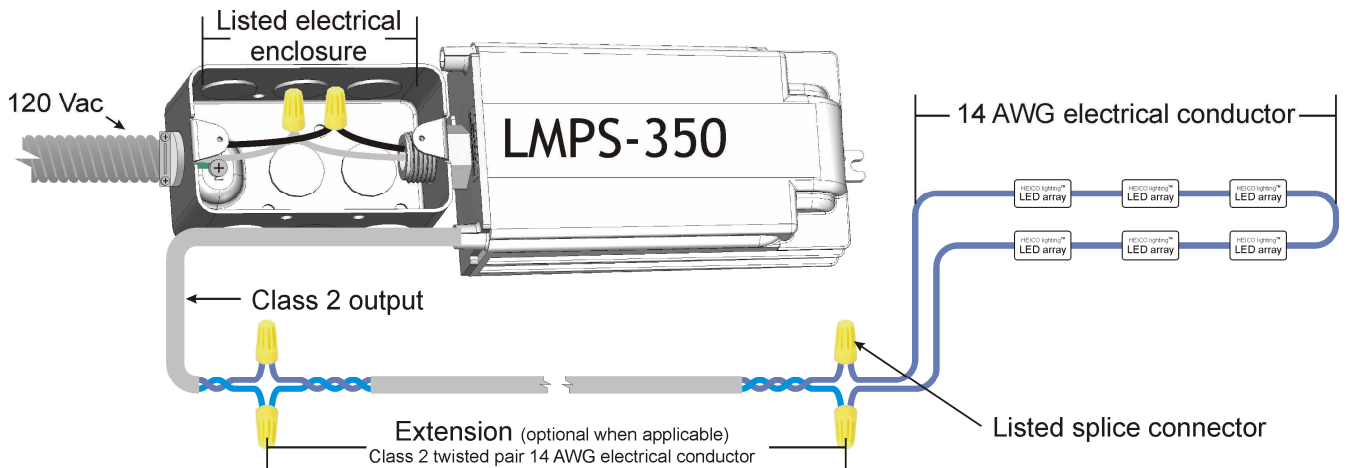
Dimensions Virgo™ X and XS color



Dimensions Virgo+™ LS1



Typical System Diagram



Virgo+™ LS LED Modules System Loading

Model	Length	LEDs per module	Consumption		Maximum number of modules	
			Watts per module	Watts per foot	White (3000K, 3500K, 6500K)	
					LMPS-350	LMPS-750
Virgo+™ LS2	Short	2	0.850	3.400	42	84
Virgo+™ LS3	Long	3	1.250	2.500	30	60
Virgo+™ LS4	Short	4	1.520	6.080	23	46
Virgo+™ LS6	Long	6	2.100	4.200	16	32
Virgo+™ XS	-	2	0.330	1.32	106	212

Virgo™ X and XS color LED Modules System Loading

Model	Length	LEDs per module	Watts per modules and maximum number of modules											
			Amber			Blue			Green			Red		
			Watts per modules	LMPS-350	LMPS-750	Watts per modules	LMPS-350	LMPS-750	Watts per modules	LMPS-350	LMPS-750	Watts per modules	LMPS-350	LMPS-750
Virgo™ X	Short	6	0.673	70	150	0.954	50	107	0.911	50	107	0.615	70	150
	Long	12	1.037	32	68	1.463	23	50	1.418	23	50	0.967	32	68
Virgo™ XS	-	2	0.195	175	375	0.269	117	250	0.256	117	250	0.191	175	375

Virgo+™ LS1 LED Modules System Loading

Model	Consumption						Maximum number of modules	
	Watts for 1 modules	Watts for 1 foot					LMPS-350	LMPS-750
		2 modules per foot	3 modules per foot	7 modules per foot	9 modules per foot	13 modules per foot		
Virgo+™ LS1	0.45	1.00	1.50	3.15	4.05	6.50	80	160

Virgo+™ LS LED Modules Photometric Information **

Model	Lumens per modules			Lumens per foot*			Lumens per watt			CRI		
	3000K	3500K	6500K	3000K	3500K	6500K	3000K	3500K	6500K	3000K	3500K	6500K
Virgo+™ LS2	64	68	72	256	272	288	75	80	85	85	85	84
Virgo+™ LS3	107	113	120	214	226	240	86	91	96	85	85	84
Virgo+™ LS4	127	134	141	508	536	564	84	89	93	85	85	84
Virgo+™ LS6	206	217	230	412	434	460	98	104	110	85	85	84
Virgo+™ XS	26	28	30	104	112	120	79	85	91	85	85	84

* All values are for the maximum allowable number of modules per foot

** Photometric data is subject to change, modules are currently being submitted for LM-79 certification.

Virgo™ X LED Modules Photometric Information

Model	Amber			Blue			Green			Red		
	Lumens per modules	Lumens per foot*	Lumens per watts	Lumens per modules	Lumens per foot*	Lumens per watts	Lumens per modules	Lumens per foot*	Lumens per watts	Lumens per modules	Lumens per foot*	Lumens per watts
Virgo™ X (short)	21	84	31	11	44	12	30	120	33	19	76	124
Virgo™ X (long)	41	82	40	23	46	16	61	122	43	36	72	74
Virgo™ XS	7	28	36	4	16	15	10	40	39	6	24	126

* All values are for the maximum allowable number of modules per foot

Virgo+™ LS1 LED Modules Photometric Information

Virgo+™ LS1	Lumens per module	Lumens per foot					Lumens per watt	CRI
		Lumens for 2 modules per foot	Lumens for 3 modules per foot	Lumens for 7 modules per foot	Lumens for 9 modules per foot	Lumens for 13 modules per foot		
6500K	33	66	99	231	297	429	74	84

Electrical Requirements

- To connect the LED arrays to the LMPS, use a 14 AWG UL or CSA listed electrical conductor approved for the purpose.
- The maximum allowable outside diameter for the electrical conductor is .150" (3.94 mm) for the LS1 and LS2, LS3, LS4, LS6, X short and long modules and .120" (3.05 mm) for the XS modules.
- Every LED array must be wired in series.

Additional References

- For complete technical drawings, see technical bulletin #24 "Architectural CAD file package"
- For the specifications of the power supplies, refer to the LMPS-350, LMPS-350/LINECORD, LMPS-DC350 and LMPS-750 specifications sheets (Documents 11126.007, 11978.002 and 11126.003).
- For mandatory installation requirements refer to the "Virgolite™ Architectural Lighting Installation Guide" (technical bulletin #7) and the "LMPS-DIMMER Architectural Lighting Installation Guide" (technical bulletin #11).

Ordering Procedure

Select your options

Description	1 - Family	2 - LED Module	3 - LED Color Spectrum
Ordering code	<u>VI</u>	_____	_____

Example : VI-V2-2-30

Options

2 - LED Module	Number of LEDs per module	LED Color Spectrum	Minimum Order Quantity (MOQ)
VXS-2 - Virgo™ XS	2	30,35,65,AM,BL,RD,GR	1 unit (30,35,65); 100 units (AM,BL,RD,GR)
VX-6 - Virgo™ X	6	AM,BL,RD,GR	100 units
VX-12 - Virgo™ X	12	AM,BL,RD,GR	100 units
V1-1 - Virgo+™ LS1	1	65	1 box (50 units per box)
V2-2 - Virgo+™ LS2	2	30,35,65	1 unit
V3-3 - Virgo+™ LS3	3	30,35,65	1 unit
V4-4 - Virgo+™ LS4	4	30,35,65	1 unit
V6-6 - Virgo+™ LS6	6	30,35,65	1 unit

3 - LED Color Spectrum

30 - White 3000K
35 - White 3500K
65 - White 6500K
AM - Amber
BL - Blue
GR - Green
RD - Red

The Virgolite™ modules LS1, LS2, LS3, LS4, LS6, X and XS can be used with HEICO lighting™'s Contactless LED System LMPs power supplies.

*For more information on our complete line of products, visit
www.heicolighting.com*

400 du Parc, Saint-Eustache
Québec, Canada, J7R 0A1
+ 1.450.491.5671
+ 1.800.665.1166