



# OVENindustries

## ELECTRONIC CONTROL SOLUTIONS

### 5C7-252 AC TEMPERATURE CONTROLLER

The input voltage is field selectable at either 120 or 240VAC. A solid state relay output provides up to 15 A at either 120 or 240VAC. The RS232 communication port allows this controller to be configured for different modes of operation utilizing the included user friendly software with GIU. Once the controller is configured the PC may be disconnected and the controller can stand-alone. All parameter settings are retained in non-volatile memory. Controller tuning parameters consists of proportional bandwidth (P), integral gain in repeats per minute (I) and the derivative rate in minutes (D) for selecting P,PI,PD or PID operation. An on/off operating mode with an adjustable hysteresis may also be selected. Alarm selections consist of no alarm function, affixed high and/or low temperature alarm or tracking alarms.



### FEATURES

- Field selectable 120 or 240VAC input
- Up to 15 A output at either 120 or 240VAC
- Heating or cooling mode selection
- PC Programmable with non-volatile memory
- P,PI,PD,PID or on/off; adjustable hysteresis control
- PLC set temperatures via two remote relay contacts
- Local analog set point with adjustable range

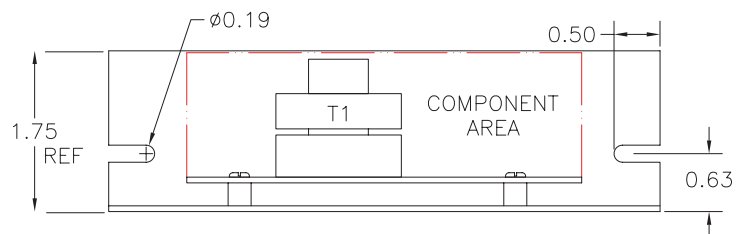
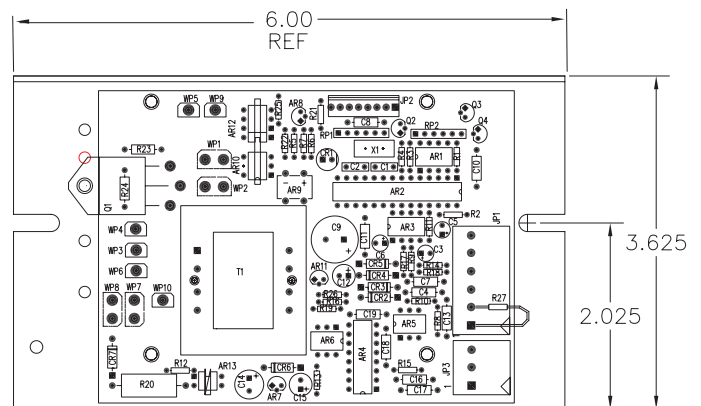
### SPECIFICATIONS

- Input Voltage: 120/240VAC
- Load Current: 15A @ 120/240VAC
- Temperature Resolution: 0.1°C
- Control Algorithm: selectable P,PI,PD,PID or on/off
  - With adjustable hysteresis
- Ambient Temperature Range: 0 to 70°C
- RS232 isolated communications port
- 2 alarm outputs
  - 0.5A @ 110 or 220VAC
  - 5V @ 20ma drive
- 1.75" H x 6" W x 3.63" D
- Customer Drawing: C77-202

### ACCESSORIES

Sensor Selection:

TS67	(15K)	-20 to 110°C
TS104	(50K)	0 to 150°C
TS136	(15K)	-20 to 110°C



CONTACT US AT **877-766-OVEN** FOR DETAILED DRAWINGS AND PRICING OR VISIT **WWW.OVENIND.COM**