

Inches  
Millimeters

## 125 Motor

Permanent magnet synchronous motor used in applications requiring up to 125 ounce-inches (9,000 gm.-cm.) of dynamic torque. Cut metal or molded plastic gear trains, different output shafts and clutches offer flexibility to meet a variety of application requirements. Our newest gearmotor for timing and drive source applications. Motor head also available with pear-shaped gearbox as Model 150. Various speeds available...consult factory.

### Features:

Rugged die cast gear housing • Mounting is compatible with other round gearmotors • Impedance protected • UL, CSA & VDE recognized • Class F insulation system is standard • Options available...consult factory

**AUTOTROL CORPORATION** 

365 East Prairie Street, Box 557  
Crystal Lake, Illinois 60039 USA  
☎ 815/459-3080 FAX 815/459-3227  
Toll Free: 1-800-228-6207

[www.autotrol.com](http://www.autotrol.com) email: [sales@autotrol.com](mailto:sales@autotrol.com)

# Specifications

## Rated Torque

Running: 125 oz.-in. (9,000 gm.-cm.) at 1 RPM  
 Starting: 87 oz.-in. (6,264 gm.-cm.) at 1 RPM

## Rotor Speed

400 RPM at 60 Hz

## Static Gear Train Rating

200 oz.-in. (14,400 gm.-cm.) maximum.  
 Varies with gear train construction.

## Rotation

CW, CCW, or Bi-Directional

## Electrical

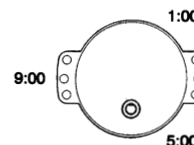
Voltage: 24V, 115V, or 230V  
 Frequency: 60Hz, 50Hz or 50/60Hz  
 Power Input: 3 watts maximum  
 Current Input: 24V-130ma, 115V-45ma,  
 230V-20ma, at 60Hz or 50 Hz

## Electrical Terminations

Standard motor is provided with either poke-in or quick-connect terminals. Leads, cord sets and connectors available as options.

## Termination Points

at 1, 5, or 9 o'clock  
 for metal gear housing.



## Ambient Operating Temperature Range

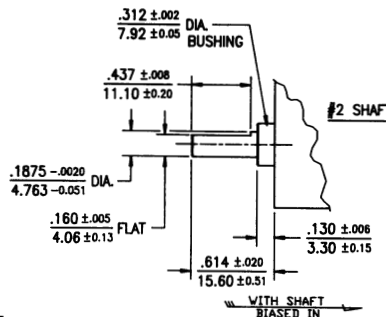
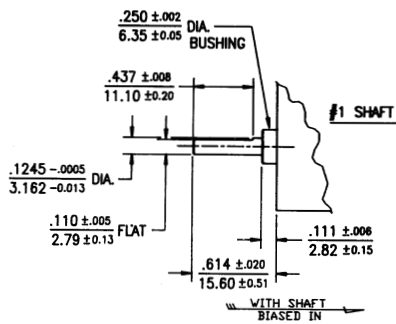
32° to 230° F (0° to 110° C) for class F insulation system, which is standard.

## Lubrication

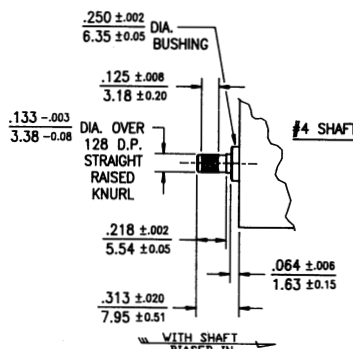
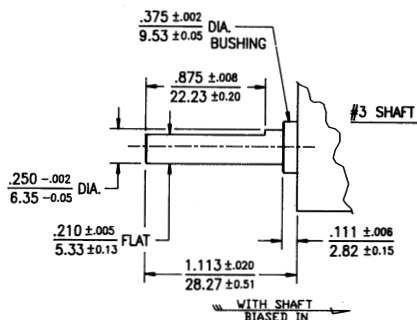
Permanently lubricated. Special lubricants available for operation under 32°F (0° C)...consult factory

## Output Shaft and Clutch Options Available

### Generally Used Output Shafts



INCHES  
 MILLIMETERS



This data sheet is intended for design purposes only. Actual motor performance characteristics, shaft design and optional features will depend upon specific requirements of the application. Consult our sales representative or the factory for sample information or assistance in establishing your specifications.