

LPC1768 DEVELOPMENT KIT

The LPC1768 Development Kit contains all of the hardware and software required for evaluating and developing with NXP's LPC1700 series microcontrollers.

The kit consists of the RDB1768V2 Development board, a fully featured 90-day evaluation version of Red Suite, and a suite of example programs. The integrated on-board debug circuit, means that no additional debug probe is needed when used with Red Suite.

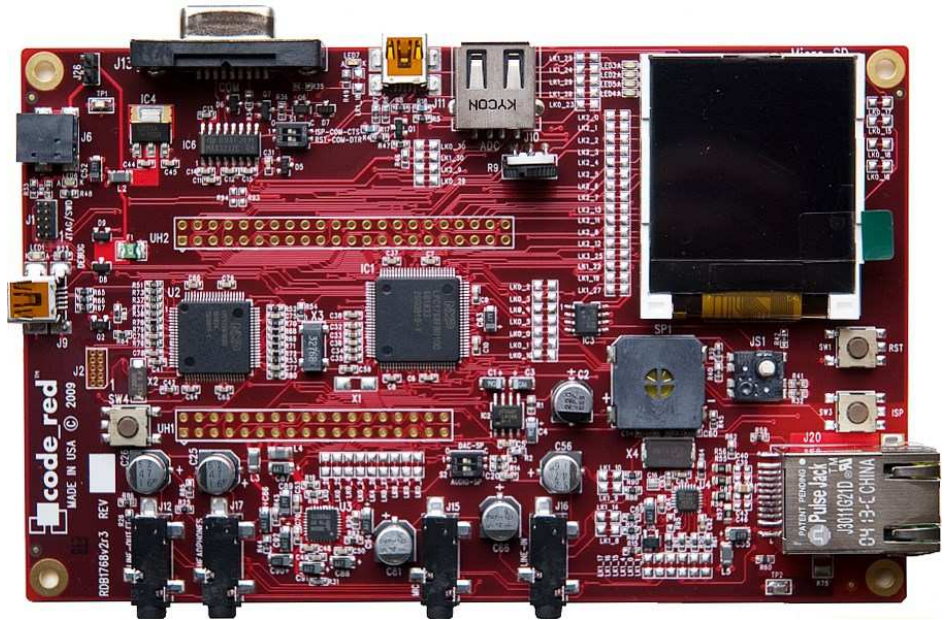
The Drag2FLASH™ feature allows a user to simply drag built binaries onto a filing system window to run them with no tools installed!

The RDB1768V2 Development board features a NXP LPC1768, 10/100 Mbps Ethernet, Host/Device USB, 16-bit stereo audio, serial port, color LCD and pads for all IO pins including GPIO and CAN, making it ideal for evaluating all of the features of the LPC1700.

Priced at \$199



LPC1768 Development Kit with RDB1768v2 and Drag2FLASH™



Features

- **NEW Drag2Flash™ feature.** Board appears as a FLASH drive and you can just drag a built binary onto the drive, press a button then run!
- RDB1768V2 Development board, fitted with NXP LPC1768 microcontroller incorporating 100 MHz ARM® Cortex-M3.
- 512KB FLASH, 64KB SRAM.
- Stunning 128x128 pixel color LCD.
- 10/100 Mbps Ethernet port. using **SMSC LAN8720 PHY**
- USB Device and Host connectors.
- 16-bit stereo audio input/output using **NXP UDA1380** with programmable sample rates from 8KHz to 48KHz.
- Audio speaker (driven from LPC1768 DAC or audio codec).
- Standard audio jacks for line-in, line-out, mic-in and stereo headphones.
- Micro-SD Card interface.
- Serial port on standard 9-pin D-type with RS232 levels.
- Mini-joystick, plus INT and RESET buttons, for user input.
- 0.1" pitch pads for all IO pins.
- USB connection with Red Suite without additional debug probe.
- 10-pin 0.05" JTAG/SWD connector for use with external debug probe.
- Can be powered by USB, removing need for separate power supply.
- Suite of example applications, including an embedded web server, and an SD-card filing system
- Supplied with a fully-featured 90-day evaluation version of Red Suite.
- Order code **LPC1768V2**.



Code Red Technologies Inc. : 648 Chenery Street, San Francisco, California 94131, USA
Code Red Technologies Ltd. : 6b Lower Court, Copley Hill Business Park, Cambridge Road, Babraham, Cambridge, CB22 3GN, UK
Tel: US Office: +1 415 349 4601; EU/UK Office +44 1223 515 768
Email: information@code-red-tech.com Web: www.code-red-tech.com