



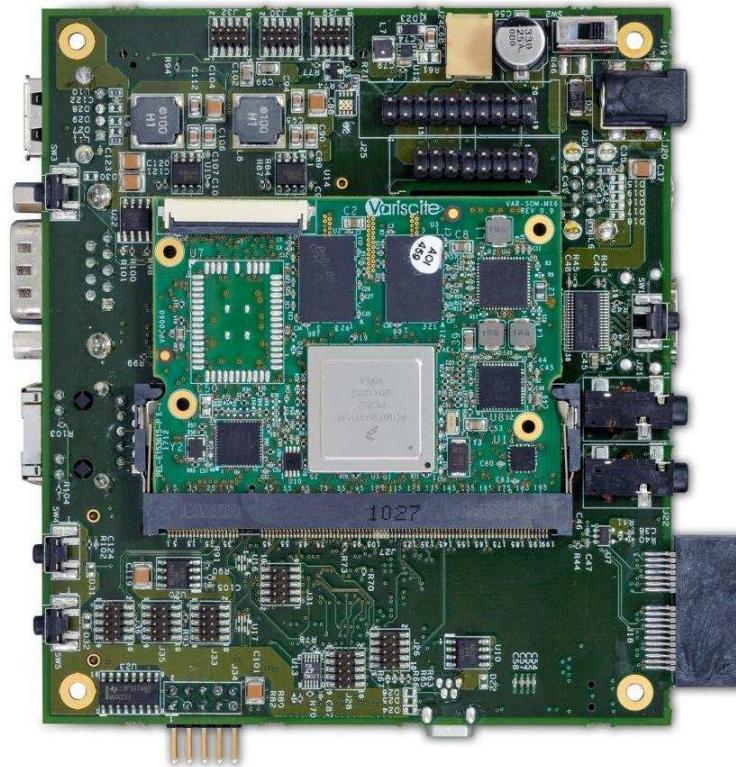
VARISCITE LTD

---

# VAR-MX6CustomBoard Rev. 1.1 Datasheet

Carrier board for VAR-SOM-MX6

V1.1



© 2012 Variscite Ltd.

All Rights Reserved. No part of this document may be photocopied, reproduced, stored in a retrieval system, or transmitted, in any form or by any means whether, electronic, mechanical, or otherwise without the prior written permission of Variscite Ltd. No warranty of accuracy is given concerning the contents of the information contained in this publication. To the extent permitted by law no liability (including liability to any person by reason of negligence) will be accepted by Variscite Ltd., its subsidiaries or employees for any direct or indirect loss or damage caused by omissions from or inaccuracies in this document.

Variscite Ltd. reserves the right to change details in this publication without notice. Product and company names herein may be the trademarks of their respective owners.

Variscite Ltd.  
9 Hamelacha St.  
Lod 70100  
POB 1121  
Israel

## Revision History

Revision	Date	Notes
1.0	30/07/2012	Initial
1.1	19/12/2012	DSI connector pin-out fixed LVDS connector changed USB OTG connector Reference Designator changed MIPI CSI-2 connector pin-out changed Top view picture changed

# Table of Contents

Revision History .....	iii
Table of Contents.....	iv
List of Tables .....	6
1 Overview.....	7
1.1 General Information .....	7
1.2 Additional Information .....	7
1.3 VAR-MX6CustomBoard Features Summary: .....	8
1.4 Block Diagram .....	9
1.5 Board Layout.....	10
1.6 VAR-MX6CustomBoard Connectors .....	11
2 Detailed Description .....	12
2.1 Overview.....	12
2.2 VAR-SOM-MX6 Interfaces.....	13
2.2.1 SO-DIMM 200 (J18).....	13
2.3 Standard External Interfaces .....	13
2.3.1 HDMI Connector (J1).....	13
2.3.2 HOST USB (J3, J16) .....	14
2.3.3 USB OTG (J38) .....	14
2.3.4 Mini PCIe (J10) .....	15
2.3.5 USIM Card (J11) .....	17
2.3.6 SATA (J12) .....	17
2.3.7 SD Card (J13) .....	18
2.3.8 Ethernet (J14).....	19
2.3.9 RS232 – DTE (J15).....	20
2.3.10 AUDIO (J20, J21).....	20
2.3.11 RS232 – Terminal (J34).....	21
2.4 DVK External Interfaces .....	22
2.4.1 SOM Expansion (J30) .....	22

2.4.2	LCD (J9/J6).....	26
2.4.3	Touch panel (J7).....	28
2.4.4	Backlight power supply connector (J23) <sup>[1]</sup> .....	29
2.4.5	LVDS Interface Connector (J22).....	29
2.4.6	Parallel Camera Interface (J8).....	30
2.4.7	SD/MMC1 (J32).....	30
2.4.8	AUDIO (J37).....	31
2.4.9	CAN1, UART2 (RS485) & DMIC Interface (J26, J35).....	31
2.4.10	SPI1/I2C1, 3 (J28).....	33
2.4.11	DSI (J24).....	34
2.4.12	CSI2 Camera (J17).....	34
2.5	User Interfaces.....	35
2.5.1	LED Indications.....	35
2.5.2	Control Buttons.....	36
2.5.3	Power Input (J18/J19).....	36
2.6	Absolute Maximum Electrical Specifications.....	38
2.7	Operational Electrical Specifications.....	38
3	Legal Notice.....	39
4	Warranty Terms.....	39
5	Contact Information.....	41

## List of Tables

Table 1 - 1 VAR-MX6CustomBoard Connectors.....	12
Table 2 - 1 USB Host1/2 Connector Connector Pin-out (J3) .....	13
Table 2 - 2 USB Host1/2 Connector Connector Pin-out (J3) .....	14
Table 2 - 3 USB Host1/2 Connector Connector Pin-out (J16).....	14
Table 2 - 4 USB OTG Connector Pin-out (J5).....	14
Table 2 - 5 Mini PCI Express Connector Pin-out (J10) .....	16
Table 2 - 6 USIM Card Connector Pin-out (J11) .....	17
Table 2 - 7 SATA Connector Pin-out (J12) .....	18
Table 2 - 8 SD Card Slot Connector Pin-out (J13).....	18
Table 2 - 9 1G RJ45 Connector Pin-out (J14).....	19
Table 2 - 10 RS232 DTE Connector Pin-out (J15) .....	20
Table 2 - 11 Headphone Jack Connector Pin-out (J20) .....	20
Table 2 - 12 Line In Jack Connector Pin-out (J21) .....	21
Table 2 - 13 RS232 – Terminal Connector Pin-out (J34) .....	21
Table 2 -14 SOM expansion Connector Pin-out (J30) .....	23
Table 2 -15 EMI 0 Connector Pin-out (J27) .....	23
Table 2 -16 EMI 1 Connector Pin-out (J29) .....	24
Table 2 -17 EMI 2 Connector Pin-out (J31) .....	24
Table 2 -18 EMI 3 Connector Pin-out (J36) .....	24
Table 2 -19 JTAG Connector Pin-out (J33).....	25
Table 2 - 20 Resistive LCD Connector Pin-out (J9) .....	27
Table 2 -21 Capacitive LCD Connector Pin-out (J6).....	28
Table 2 - 22 Capacitive Touch panel Connector Pin-out (J7).....	28
Table 2 - 23 Resistive Touch panel Connector Pin-out (J4) .....	28
Table 2 -24 Backlight power supply Connector Pin-out (J23).....	29
Table 2 - 25 LVDS Connector Connector Pin-out (J22) .....	30
Table 2 - 26 Parallel camera Connector Pin-out (J8) .....	30
Table 2 - 27 SD/MMC1 Header Pin-out (J32).....	31
Table 2 - 28 Audio Connector Pin-out (J7) .....	31
Table 2 - 29 CAN, RS422/485 Pin-out (J26).....	32
Table 2 - 30 Miscellaneous Connector Pin-out (J35) .....	32
Table 2 - 31 SPI1/I2Cx Connector Pin-out (J28) .....	33
Table 2 - 32 I2C3 Connector Pin-out (J2) .....	33
Table 2 - 33 DSI Connector Pin-out (J24) .....	34
Table 2 - 34 CSI2 Camera Connector Pin-out (J17).....	35
Table 2 - 35 Boot Select Switch Modes.....	36
Table 2 - 36 Terminal Block Connector Pin-out (J19) .....	36
Table 3 - 1 Absolute Maximum Electrical Specifications .....	38
Table 3 - 2 Operational Electrical Specifications.....	38
Table 4 - 1 Environmental Specifications.....	<b>Error! Bookmark not defined.</b>

# 1 Overview

This chapter gives a general overview of the VAR-MX6CustomBoard.

## 1.1 General Information

The VAR-MX6CustomBoard is a single board-computer, utilizing all the VAR-SOM-MX6 System-on-Module features. For development and production, the VAR-MX6CustomBoard serves both as a complete development kit and as an end-product, assembled according to your specifications at an optimized price-point.

- VAR-MX6CustomBoard – evaluation board
  - ✓ Carrier -Board, compatible with VAR-SOM-MX6
  - ✓ Schematics
- VAR-EXT-CB402 – SCI2 Camera module
- O.S support
  - ✓ Linux BSP
  - ✓ Windows Embedded Compact 7
  - ✓ Android

## 1.2 Additional Information

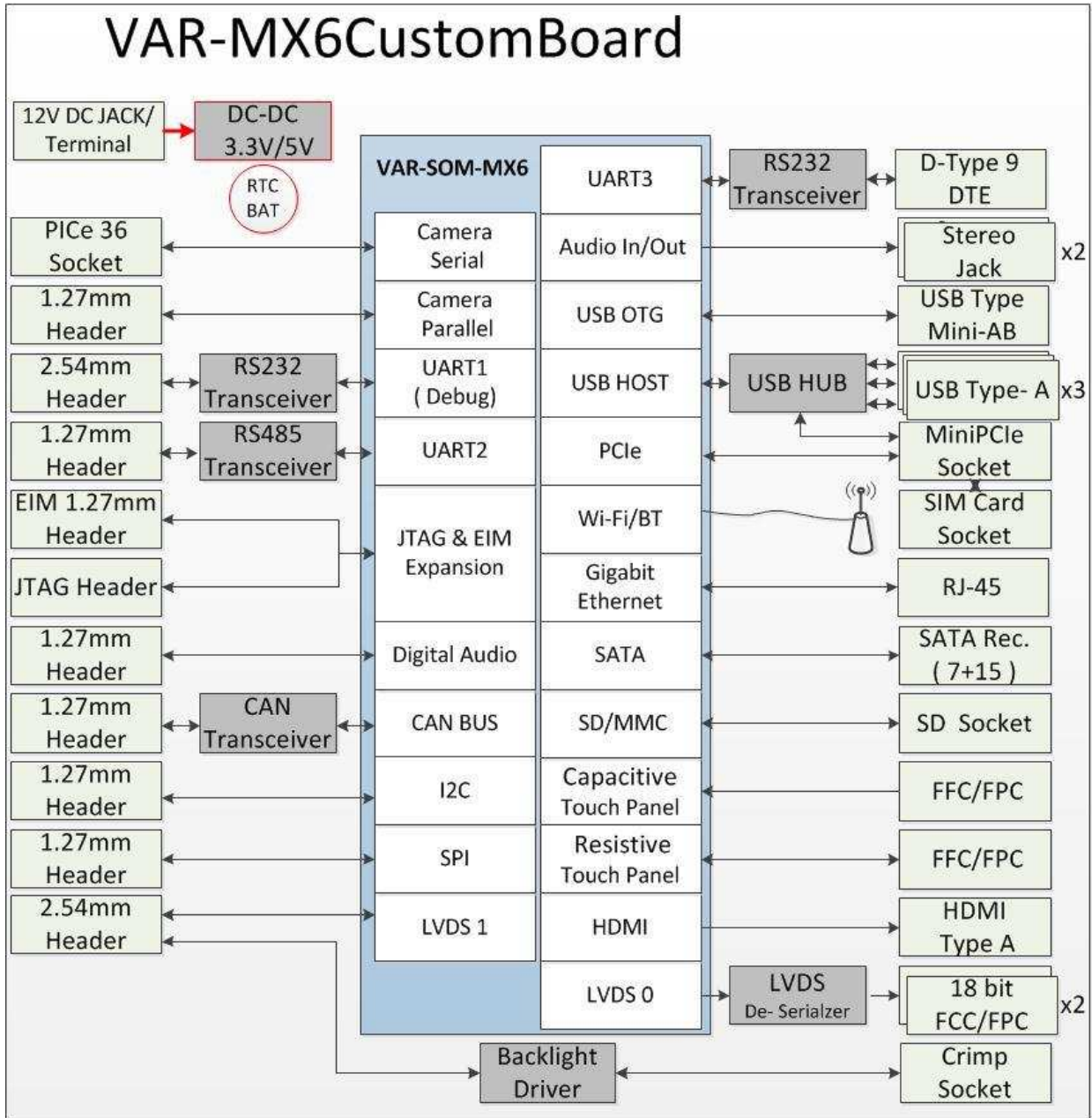
Board schematics as well as a mechanical CAD data base are available for download from:  
[www.variscite.com](http://www.variscite.com).

For further information contact Variscite support at: [support@variscite.com](mailto:support@variscite.com).

### 1.3 VAR-MX6CustomBoard Features Summary:

- SO-DIMM200 socket, compatible with the VAR-SOM-MX6
- Display:
  - 2x 18 Bit LCD FPC/FFC (Supporting Capacitive/Resistive modules)
  - 18/24 bit LVDS Header
  - MIPI DSI Header
- HDMI Type A Jack
- Resistive and Capacitive touch interface
- Backlight Driver
- Gigabit Ethernet Port , RJ45
- USB: OTG Mini-AB, Type A HOST X 3
- SATA Connector
- SD-Card
- DS1337 RTC
- 36 pin PCIe (V2.0) Socket
- AUDIO: Line out, Line In ,
- RS232
- Extension Headers
  - EIM , JTAG, Camera, CAN ,UART1,2 ,SPI , I2C
- 12V Power Supply , RTC Coin Backup Battery socket

## 1.4 Block Diagram

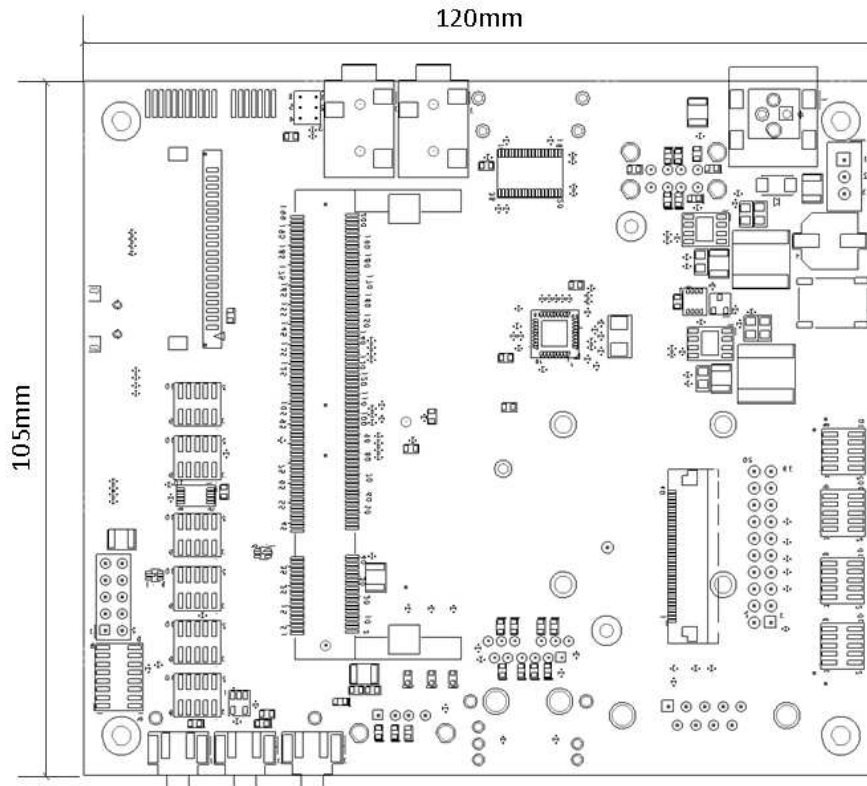


## 1.5 Board Layout

The VAR-MX6CustomBoard's physical dimensions:

Detailed CAD files are available for download from: [www.variscite.com](http://www.variscite.com).

Top Side - Detailed View



## 1.6 VAR-MX6CustomBoard Connectors

The table below lists all available connectors on the VAR-MX6CustomBoard - refer to Chapter 2 for detailed description and the pin-out of each connector.

Ref	Function	Type
J1	HDMI Connector	CON RCPT HDMI TYPE A R/A SMD
J2	I2C3, BootsEl0/CPT_INT	Header 5 x 2, 1.27 mm
J3	USB Host, Ports 1/2	2 x USB TYPE A
J4	Touch Panel I/F Resistive	FFC/FPC 4-pin
J6	18-bit RGB LCD with Capacitive Touch	FFC/FPC 40-pin
J7	Capacitive Touch Panel I/F	FFC/FPC 10-pin
J8	Camera Interface	Header, 8 x 2, 1.27 mm
J9	18-bit RGB LCD with Resistive Touch	FFC/FPC 40-pin
J10	Mini PCIe	CON 2X26 MINI PCIe
J11	Usim Card	CON 6 SIM CARD
J12	SATA	SATA connector Receptacle15+7
J13	MMC-SD Card	SDCARD Socket
J14	1Gb Ethernet	RJ-45 1GB G/Y Led
J15	RS232	CONN DB9 (male)
J16	USB Host	USB TYPE A
J17	Camera	CON PCIE 36 Pin
J18	VCC-IN	Con. TH. Power 4A (Option)
J19	VCC-IN	Power Jack (DC Terminal)
J20	Head Phone out	Audio Jack 3.5 mm
J21	Line In	Audio Jack 3.5 mm
J22	LVDS Connector	40 pin LVDS cable connector
J23	LCD Backlight	CON 2 PIN Crimp Style
J24	DSI	Header, 5 x 2, 1.27 mm SMT
J25	VAR-SOM-MX6	DIMM200
J26	CAN	Header, 5x2, 1.27 mm SMT
J27	EMI 0	Header, 5x2, 1.27 mm SMT
J28	I2C1/CSPI1	Header, 5x2, 1.27 mm SMT
J29	EMI 1	Header, 5x2, 1.27 mm SMT
J30	SOM Expansion	FFC/FPC 40-pin
J31	EMI 2	Header, 5x2, 1.27 mm SMT

Ref	Function	Type
J32	SD/MMC	Header, 5x2, 1.27 mm SMT
J33	JTAG Connector	Header, 10 x 2, 1.27 mm TH
J34	UART1	Header, 5x2, 1.27 mm SMT RA
J35	UART2/DMIC	Header, 5x2, 1.27 mm SMT
J36	EMI 3	Header, 5x2, 1.27 mm SMT
J37	Digital Audio AudMUX 4/SPDIF	Header, 5x2, 1.27 mm SMT
J38	USB OTG	USB Connector MINI AB
JBT1	RTC BACKUP	BAT Holder CR1225

Table 1 - 1 VAR-MX6CustomBoard Connectors

## 2 Detailed Description

### 2.1 Overview

This chapter details the VAR-MX6CustomBoard features and external interfaces, most are driven by the VAR-SOM-MX6. Please refer to the VAR-SOM-MX6 data sheet for more information regarding those interfaces.

The following list describes this chapter's table column header:

Pin#:

Pin number of the specific connector

VAR-MX6CustomBoard Signal:

VAR-MX6CustomBoard schematic signal name

Type:

Pin Type & Direction:

- I – In
- O – Out
- DS – Differential Signal
- A – Analog

Description:

Short pin functionality description

## 2.2 VAR-SOM-MX6 Interfaces

### 2.2.1 SO-DIMM 200 (J18)

The VAR-MX6CustomBoard features an SO-DIMM200 1.8 V standard connector compatible with the VAR-SOM-MX6 System-on-Module devices. Please refer to the VAR-SOM-MX6 module data-sheet for complete signals' description and pin-out.

## 2.3 Standard External Interfaces

### 2.3.1 HDMI Connector (J1)

The VAR-MX6CustomBoard features a standard HDMI output connector J1.

#### 2.3.1.1 HDMI Connector Pin-out (J1)

Pin #	VAR-MX6CustomBoard Signal	Type	Description
<b>1</b>	DAT2+	ODS	HDMI Data 2 Positive
<b>2</b>	DAT2_S	POWER	HDMI Data 2 Shield
<b>3</b>	DAT2-	ODS	HDMI Data 2 Negative
<b>4</b>	DAT1+	ODS	HDMI Data 1 Positive
<b>5</b>	DAT1_S	POWER	HDMI Data 1 Shield
<b>6</b>	DAT1-	ODS	HDMI Data 1 Negative
<b>7</b>	DAT0+	ODS	HDMI Data 0 Positive
<b>8</b>	DAT0_S	POWER	HDMI Data 0 Shield
<b>9</b>	DAT0-	ODS	HDMI Data 0 Negative
<b>10</b>	CLK+	ODS	HDMI Clock Positive
<b>11</b>	CLK_S	POWER	HDMI Clock Shield
<b>12</b>	CLK-	ODS	HDMI Clock Negative
<b>13</b>	CEC	IO	One Wire control interface
<b>14</b>	NC		
<b>15</b>	SCL	IO	I2C HDMI interface connected to I2C2
<b>16</b>	SDA	IO	I2C HDMI interface connected to I2C2
<b>17</b>	DDC/CEC GND	POWER	One Wire control reference pin
<b>18</b>	+5V	POWER	5V power supply
<b>19</b>	DET	I	HDMI Hot plug Detect input

Table 2 - 1 USB Host1/2 Connector Connector Pin-out (J3)

### 2.3.2 HOST USB (J3, J16)

The VAR-MX6CustomBoard supports three USB 2.0 host ports. All are driven by an on-board USB hub.

#### 2.3.2.1 USB Host 1/2 Connector Pin-out (J3)

Pin #	VAR-MX6CustomBoard Signal	Type	Description
<b>A1</b>	VCC_USB1	Power	5 V power supply, 500 mA max.
<b>A2</b>	USB_HUB_DN1	DSI/O	USB data negative
<b>A3</b>	USB_HUB_DP1	DSI/O	USB data positive
<b>A4</b>	GND	Power	Digital Ground
<b>B1</b>	VCC_USB2	Power	5 V power supply, 500 mA max.
<b>B2</b>	USB_HUB_DN2	DSI/O	USB data negative
<b>B3</b>	USB_HUB_DP2	DSI/O	USB data positive
<b>B4</b>	GND	Power	Digital Ground

Table 2 - 2 USB Host1/2 Connector Connector Pin-out (J3)

#### 2.3.2.2 USB Host Connector Pin-out (J16)

Pin #	VAR-MX6CustomBoard Signal	Type	Description
<b>1</b>	VCC_USB3	Power	5 V power supply, 500 mA max.
<b>2</b>	USB_HUB_DN3	DSI/O	USB data negative
<b>3</b>	USB_HUB_DP3	DSI/O	USB data positive
<b>4</b>	GND	Power	Digital Ground

Table 2 - 3 USB Host1/2 Connector Connector Pin-out (J16)

### 2.3.3 USB OTG (J38)

The VAR-MX6CustomBoard OTG is driven by the VAR-SOM-MX6 OTG interface.

#### 2.3.3.1 USB OTG Connector Pin-out (J38)

Pin #	VAR-MX6CustomBoard Signal	Type	Description
<b>1</b>	OTG_VBUS	Power	5 V in/out (client/host)
<b>2</b>	USB_OTG_DM	DSI/O	USB data minus
<b>3</b>	USB_OTG_DP	DSI/O	USB data plus
<b>4</b>	USB_OTG_ID	I	USB OTG ID signal ('1' - device mode)
<b>5</b>	DGND	Power	Digital Ground

Table 2 - 4 USB OTG Connector Pin-out (J38)

### 2.3.4 Mini PCIe (J10)

The VAR-MX6Custom Board Mini PCI Express interface is exposed by a standard Mini PCI Express connector. Mini PCI Express port is directly connected to the VAR-SOM-MX6 as well as to USIM socket (J11), supporting PCIe modems.

#### 2.3.4.1 Mini PCIe Connector Pin-out (J10)

Pin #	VAR-MX6CustomBoard Signal	Type	Description
1	SPDIF_OUT_PCIE_PCIE_WAKE_B		
2	BASE_PER_3V3	POWER	3.3V power supply
3	NC		Not Connected
4	DGND	POWER	Digital Ground
5	NC		Not Connected
6	VCC_1V5_PCIE	POWER	1.5V power supply limited to 300mA
7	NC		Not Connected
8	PCIE_UIM_PWR	O	SIM Card VCC power supply
9	DGND	POWER	Digital Ground
10	PCIE_UIM_DATA	IO	SIM Card data
11	PCIE_REFCLKM	DSO	PCIE Clock pair negative
12	PCI3_UIM_CLK	O	SIM Card clock
13	PCIE_REFCLKP	DSO	PCIE Clock pair positive
14	PCIE_UIM_RST	O	SIM Card reset
15	DGND	POWER	Digital Ground
16	PCIE_UIM_VPP	O	SIM Card VPP power supply
17	NC		Not Connected
18	DGND	POWER	Digital Ground
19	NC		Not Connected
20	SPDIF_IN_PCIE_DIS_B	O	Disable signal
21	DGND	POWER	Digital Ground
22	AUDMUX4_RXC_PCIE_RESET_B	O	Reset signal
23	PCIE_RXM	DSI	PCIE Receive pair negative
24	BASE_PER_3V3	POWER	3.3V power supply
25	PCIE_RXP	DSI	PCIE Receive pair positive
26	DGND	POWER	Digital Ground
27	DGND	POWER	Digital Ground
28	VCC_1V5_PCIE	POWER	1.5V power supply limited to 300mA
29	DGND	POWER	Digital Ground
30	I2C3_SCL	IO	I2C3 Clock
31	PCIE_TXM	DSO	PCIE Transmit pair negative
32	I2C3_SDA	IO	I2C3 Data
33	PCIE_TXP	DSO	PCIE Transmit pair positive

Pin #	VAR-MX6CustomBoard Signal	Type	Description
34	DGND	POWER	Digital Ground
35	DGND	POWER	Digital Ground
36	USB_HUB_DN4	DSIO	USB data minus
37	DGND	POWER	Digital Ground
38	USB_HUB_DP4	DSIO	USB data plus
39	BASE_PER_3V3	POWER	3.3V power supply
40	DGND	POWER	Digital Ground
41	BASE_PER_3V3	POWER	3.3V power supply
42	LED_WWAN_B	I	WWAN LED input
43	DGND	POWER	Digital Ground
44	LED_WLAN_B	I	WLAN LED input
45	NC		Not Connected
46	LED_WPAN_B	I	WPAN LED input
47	NC		Not Connected
48	VCC_1V5_PCIE	POWER	1.5V power supply limited to 300mA
49	NC		Not Connected
50	DGND	POWER	Digital Ground
51	NC		Not Connected
52	BASE_PER_3V3	POWER	3.3V power supply

Table 2 – 5 Mini PCI Express Connector Pin-out (J10)

### 2.3.5 USIM Card (J11)

The VAR-MX6CustomBoard has an on-board USIM slot connected to the Mini PCI Express interface.

#### 2.3.5.1 USIM Card Connector Pin-out (J11)

Pin #	VAR-MX6CustomBoard Signal	Type	Description
1	VCC	POWER	USIM power supply
2	RESET	O	USIM Reset
3	CLK	O	USIM Clock
4	GND	POWER	Digital Ground
5	VPP	POWER	USIM Programming power supply
6	I/O	IO	USIM Data

Table 2 – 6 USIM Card Connector Pin-out (J11)

### 2.3.6 SATA (J12)

The VAR-MX6CustomBoard provides SATA signals & power supply through a standard 22 (7+5) pins female SATA connector (J120).

#### 2.3.6.1 SATA Connector Pin-out (J12)

Pin #	VAR-MX6CustomBoard Signal	Type	Description
P1	V33	POWER	3.3V power supply
P2	V33	POWER	3.3V power supply
P3	V33/PC	POWER	3.3V power supply
P4	GND	POWER	Digital Ground
P5	GND	POWER	Digital Ground
P6	GND	POWER	Digital Ground
P7	V5/PC	POWER	5V power supply
P8	V5	POWER	5V power supply
P9	V5	POWER	5V power supply
P10	GND	POWER	Digital Ground
P11	DAS/DSS	POWER	Connected to Digital Ground
P12	GND	POWER	Digital Ground
P13	V12/PC	POWER	12V power supply (unconnected)
P14	V12	POWER	12V power supply (unconnected)
P15	V12	POWER	12V power supply (unconnected)
S1	GND	POWER	Digital Ground
S2	TXP	ODS	SATA Transmit pair positive
S3	TXN	ODS	SATA Transmit pair negative
S4	GND	POWER	Digital Ground
S5	RXN	IDS	SATA Receive pair negative

Pin #	VAR-MX6CustomBoard Signal	Type	Description
S6	RXP	IDS	SATA Receive pair positive
S7	GND	POWER	Digital Ground

Table 2 – 7 SATA Connector Pin-out (J12)

### 2.3.7 SD Card (J13)

The SD card interface is driven by the VAR-SOM-MX6 SD/MMC0 interface.

SD Card Slot Connector Pin-out (J13)

Pin #	VAR-MX6CustomBoard Signal	Type	Description
<b>1</b>	SDMMC2_DAT3	DSI/O	SD data 3
<b>2</b>	SDMMC2_CMD	DSI/O	SD command
<b>3</b>	DGND	Power	Digital Ground
<b>4</b>	VCC_SD	Power	SD card VCC
<b>5</b>	SDMMC2_CLK	O	SD clock
<b>6</b>	DGND	Power	Digital Ground
<b>7</b>	SDMMC2_DAT0	DSI/O	SD data 0
<b>8</b>	SDMMC2_DAT1	DSI/O	SD data 1
<b>9</b>	SDMMC2_DAT2	DSI/O	SD data 2
<b>10</b>	SDMMC2_CD_CAN2_TX	I	SD card detect
<b>11</b>	SD_WP_CAN2_RX	I	SD write protected
<b>12</b>	DGND	Power	Digital Ground
<b>13</b>	DGND	Power	Digital Ground

Table 2 - 8 SD Card Slot Connector Pin-out (J13)

### 2.3.8 Ethernet (J14)

The VAR-MX6CustomBoard 10/100/1000 Mbps Ethernet interface is supported by a standard RJ45 Ethernet jack with integrated magnetics. Ethernet port is directly connected to the VAR-SOM-MX6 on-board Ethernet PHY (connected to the i.MX6 RGMII interface).

10/100/1000BaseT Connector Pin-out (J14)

Pin #	VAR-MX6CustomBoard Signal	Type	Description																		
1	TRCT3	O																			
2	TR3-	DI/O	Bi-directional pair 3 negative																		
3	TR3+	DI/O	Bi-directional pair 3 positive																		
4	TR2+	DI/O	Bi-directional pair 2 positive																		
5	TR2-	DI/O	Bi-directional pair 2 negative																		
6	TRCT2	O	Bias capacitor for pair 2																		
7	TRCT4	O	Bias capacitor for pair 4																		
8	TR4+	DI/O	Bi-directional pair 4 positive																		
9	TR4-	DI/O	Bi-directional pair 4 negative																		
10	TR1-	DGND	Bi-directional pair 1 negative																		
11	TR1+		Bi-directional pair 1 positive																		
12	TRCT1	O	Bias capacitor for pair 1																		
13	Y-	Cathode	PHY LED 2 – see LED 1 description																		
14	Y+	Anode	Anode of LED 2																		
15	O-	Cathode	PHY LED 1																		
			<table border="1"> <thead> <tr> <th>LED1</th> <th>LED2</th> <th>Status</th> </tr> </thead> <tbody> <tr> <td>Off</td> <td>Off</td> <td>Link off</td> </tr> <tr> <td>Blinking</td> <td>Off</td> <td></td> </tr> <tr> <td>On</td> <td>Off</td> <td>1G link</td> </tr> <tr> <td>On</td> <td>Blinking</td> <td></td> </tr> <tr> <td>On</td> <td>On</td> <td>Speed OK</td> </tr> </tbody> </table>	LED1	LED2	Status	Off	Off	Link off	Blinking	Off		On	Off	1G link	On	Blinking		On	On	Speed OK
			LED1	LED2	Status																
			Off	Off	Link off																
			Blinking	Off																	
			On	Off	1G link																
On	Blinking																				
On	On	Speed OK																			
16	+	Anode	Anode of Led 1, 3																		
17	G-	Cathode	Led 3, Unconnected																		

Table 2 - 9 1G RJ45 Connector Pin-out (J14)

### 2.3.9 RS232 – DTE (J15)

The RS232 DTE interface is driven by the VAR-SOM-MX6 UART3 interface and a RS232 transceiver. This connector serves as a DTE interface for connecting third party DCE (i.e. modem) devices.

#### 2.3.9.1 RS232 – DTE Connector Pin-out (J15)

Pin #	VAR-MX6CustomBoard Signal	Type	Description
1	NC		
2	UART3_RX_C	I	UART3 receive
3	UART3_TX_C	O	UART3 transmit
4	NC		
5	DGND	Power	Digital Ground
6	NC		
7	UART3_RTS_C	O	UART3 RTS
8	UART3_CTS_C	I	UART3 CTS
9	NC		

Table 2 - 10 RS232 DTE Connector Pin-out (J15)

### AUDIO (J20, J21)

The VAR-MX6CustomBoard feature two 3.5 mm jacks for audio interfaces

- Headphone jack (J20)
- Line in jack (J21)

Both interfaces are driven by the VAR-SOM-MX6, on board AUDIO CODEC device.

#### Headphone Jack Connector Pin-out (J20)

Pin #	VAR-MX6CustomBoard Signal	Type	Description
1	GND	AP	Audio Ground
2	HP_OUT_R	AI	Headphone out right
3	HP_OUT_L	AI	Headphone out left

Table 2 - 11 Headphone Jack Connector Pin-out (J20)

## 2.3.9.2 Line in Jack Connector Pin-out (J21)

Pin #	VAR-MX6CustomBoard Signal	Type	Description
1	GND	Power	
2	AUD_IN_R	AI	Line in right input
3	AUD_IN_L	AI	Line in left input

Table 2 - 12 Line In Jack Connector Pin-out (J21)

## 2.3.10 RS232 – Terminal (J34)

The RS232 DTE interface is driven by the VAR-SOM-MX6 UART3 interface and an RS232 transceiver. This connector serves as a DTE interface for connecting third party DCE (i.e. modem) devices.

## 2.3.10.1 RS232 – Terminal Connector Pin-out (J34)

Pin #	VAR-MX6CustomBoard Signal	Type	Description
1			
2	UART1_RX_C	I	UART3 receive
3	UART1_TX_C	O	UART3 transmit
4	BASE_PER_3V3	Power	Power supply 3.3V
5	DGND	Power	Digital Ground
6			
7			
8	UART1_CTS_C	O	UART3 RTS
9	UART1_RTS_C	I	UART3 CTS
10			

Table 2 - 13 RS232 – Terminal Connector Pin-out (J34)

## 2.4 DVK External Interfaces

This section describes the additional available interfaces, using nonstandard connectors. Those interfaces can be used for connecting any third party hardware. Most of those signals are exposed by a 1.27mm 2x5 headers, mates with any 1.27 mm receptacle

Connector example: Sullins Connector Solutions, LPPB052NFSS-RC

<http://www.digikey.com/product-detail/en/LPPB052NFSS-RC/S9006E-05-ND/1786338>,

Cable example: Samtec, FFSD-05-D-08.00-01-N

<http://uk.farnell.com/samtec/ffsd-05-d-08-00-01-n/lead-1-27mm-idc-8in-10way/dp/1934656>)

### 2.4.1 SOM Expansion (J30)

VAR-SOM-MX6 features additional Expansion 40 Pin FFC connector. This connector connects to the VAR-MX6CustomBoard using a 40 Pin FFC cable. The signals from this connector then routed to J27, J29, J31, J33, J36 connectors.

#### 2.4.1.1 SOM Expansion Connector Pin-out (J30)

Pin #	VAR-MX6CustomBoard Signal	Type	Description
1	JTAG_TDI	I	JTAG Data In
2	EIM_A16	IO	Local Bus A[16]
3	JTAG_NTRST	I	JTAG Reset TAP controller
4	JTAG_TMS	I	JTAG Test Mode Select
5	JTAG_TCK	O	JTAG Test Clock
6	EIM_A17	IO	Local Bus A[17]
7	JTAG_TDO	O	JTAG Data Out
8	DGND	POWER	Digital Ground
9	EIM_WAIT	IO	Local Bus Wait
10	EIM_A18	IO	Local Bus A[18]
11	EIM_A24	IO	Local Bus A[24]
12	EIM_CS0	IO	Local Bus CS[0]
13	EIM_CS1	IO	Local Bus CS[1]
14	EIM_A22	IO	Local Bus A[22]
15	EIM_OE	IO	Local Bus OE
16	EIM_EB1	IO	Local Bus EB[1]
17	EIM_DA3	IO	Local Bus DA[3]
18	EIM_DA6	IO	Local Bus DA[6]
19	EIM_DA1	IO	Local Bus DA[10]
20	EIM_A20	IO	Local Bus A[20]
21	EIM_DA5	IO	Local Bus DA[5]
22	EIM_DA7	IO	Local Bus DA[7]

Pin #	VAR-MX6CustomBoard Signal	Type	Description
23	EIM_DA8	IO	Local Bus DA[8]
24	EIM_A19	IO	Local Bus A[19]
25	EIM_LBA	IO	Local Bus LBA
26	EIM_EB0	IO	Local Bus EB[0]
27	EIM_DA12	IO	Local Bus DA[12]
28	EIM_DA14	IO	Local Bus DA[14]
29	EIM_BCLK	IO	Local Bus BCLK
30	EIM_DA0	IO	Local Bus DA[0]
31	EIM_DA15	IO	Local Bus DA[15]
32	EIM_DA2	IO	Local Bus DA[2]
33	EIM_DA9	IO	Local Bus DA[9]
34	EIM_DA4	IO	Local Bus DA[4]
35	EIM_DA10	IO	Local Bus DA[10]
36	DGND	POWER	Digital Ground
37	EIM_DA13	IO	Local Bus DA[13]
38	EIM_DA11	IO	Local Bus DA[11]
39	EIM_A23	IO	Local Bus A[23]
40	EIM_RW	IO	Local Bus RW

Table 2 –14 SOM expansion Connector Pin-out (J30)

#### 2.4.1.2 EMI 0 Connector Pin-Out (J27)

Pin #	VAR-MX6CustomBoard Signal	Type	Description
1	BASE_PER_3V3	POWER	Power supply 3.3V
2	EIM_OE	IO	Local Bus OE
3	EIM_CS0	IO	Local Bus CS0
4	EIM_LBA	IO	Local Bus LBA
5	EIM_CS1	IO	Local Bus CS1
6	EIM_BCLK	IO	Local Bus BCLK
7	EIM_WAIT	IO	Local Bus WAIT
8	EIM_EB0	IO	Local Bus EB0
9	EIM_RW	IO	Local Bus RW
10	EIM_EB1	IO	Local Bus EB1

Table 2 –15 EMI 0 Connector Pin-out (J27)

#### 2.4.1.3 EMI 1 Connector Pin-Out (J29)

Pin #	VAR-MX6CustomBoard Signal	Type	Description
1	BASE_PER_3V3	POWER	Power supply 3.3V
2	EIM_DA0	IO	Local Bus DA0
3	EIM_DA1	IO	Local Bus DA1

Pin #	VAR-MX6CustomBoard Signal	Type	Description
4	EIM_DA2	IO	Local Bus DA2
5	EIM_DA3	IO	Local Bus DA3
6	EIM_DA4	IO	Local Bus DA4
7	EIM_DA5	IO	Local Bus DA5
8	EIM_DA6	IO	Local Bus DA6
9	EIM_DA7	IO	Local Bus DA7
10	DGND	POWER	Digital Ground

Table 2 –16 EMI 1 Connector Pin-out (J29)

## 2.4.1.4 EMI 2 Connector Pin-Out (J31)

Pin #	VAR-MX6CustomBoard Signal	Type	Description
1	BASE_PER_3V3	POWER	Power supply 3.3V
2	EIM_DA8	IO	Local Bus DA8
3	EIM_DA9	IO	Local Bus DA9
4	EIM_DA10	IO	Local Bus DA10
5	EIM_DA11	IO	Local Bus DA11
6	EIM_DA12	IO	Local Bus DA12
7	EIM_DA13	IO	Local Bus DA13
8	EIM_DA14	IO	Local Bus DA14
9	EIM_DA15	IO	Local Bus DA15
10	DGND	POWER	Digital Ground

Table 2 –17 EMI 2 Connector Pin-out (J31)

## 2.4.1.5 EMI 3 Connector Pin-Out (J36)

Pin #	VAR-MX6CustomBoard Signal	Type	Description
1	BASE_PER_3V3	POWER	Power supply 3.3V
2	EIM_A16	IO	Local Bus A16
3	EIM_A17	IO	Local Bus A17
4	EIM_A18	IO	Local Bus A18
5	EIM_A19	IO	Local Bus A19
6	EIM_A20	IO	Local Bus A20
7	EIM_A22	IO	Local Bus A21
8	EIM_A23	IO	Local Bus A23
9	EIM_A24	IO	Local Bus A24
10	DGND	POWER	Digital Ground

Table 2 –18 EMI 3 Connector Pin-out (J36)

## 2.4.1.6 JTAG Connector Pin-Out (J33)

Pin #	VAR-MX6CustomBoard Signal	Type	Description
1	JTAG_VREF	O	Reference Power supply 3.3V
2	BASE_PER_3V3	POWER	Power supply 3.3V
3	JTAG_NTRST	O	JTAG Reset TAP controller
4	DGND	POWER	Digital Ground
5	JTAG_TDI	I	JTAG Data In
6	DGND	POWER	Digital Ground
7	JTAG_TMS	I	JTAG Test Mode Select
8	DGND	POWER	Digital Ground
9	JTAG_TCK	I	JTAG Test Clock
10	DGND	POWER	Digital Ground
11	JTAG_RTCK	O	JTAG Test Clock return
12	DGND	POWER	Digital Ground
13	JTAG_TDO	O	JTAG Data Out
14	DGND	POWER	Digital Ground
15	JTAG_NSRST	I	Reset processor signal
16	DGND	POWER	Digital Ground
17	JTAG_DE	I	JTAG Data Enable
18	DGND	POWER	Digital Ground
19	JTAG_DACK	O	JTAG Data Acknowledge
20	DGND	POWER	Digital Ground

Table 2 –19 JTAG Connector Pin-out (J33)

## 2.4.2 LCD (J9/J6)

An on-board 18bit LVDS->RGB 18-bit converter provides support for a parallel RGB LCD display. The connector pin-out is compatible with VAR-DVK-MX6 optional 7" LCD modules (resistive/capacitive).

### 2.4.2.1 LCD Connector Pin-out (Resistive) (J9)

Pin #	VAR-MX6CustomBoard Signal	Type	Description
1	VCC_5V	Power	VLED, 5V
2	VCC_5V	Power	VLED, 5V
3	PWM_BACKLIGHTEN	O	Backlight brightness control
4	DGND	Power	Ground Connection for Backlight Led
5	DGND	Power	Ground Connection for Backlight Led
6	BASE_PER_3V3	Power	MX6CustomBoard peripherals VCC
7	BASE_PER_3V3	Power	MX6CustomBoard peripherals VCC
8	MODE	O	MODE
9	ACBIAS	O	Data enable
10	VSYNC	O	Vertical sync
11	HSYNC	O	Horizontal sync
12	DGND	Power	Digital Ground
13	DB7	O	Blue bit 7
14	DB6	O	Blue bit 6
15	DB5	O	Blue bit 5
16	DGND	Power	Digital Ground
17	DB4	O	Blue bit 4
18	DB3	O	Blue bit 3
19	DB2	O	Blue bit 2
20	DGND	Power	Digital Ground
21	DG7	O	Green bit 7
22	DG6	O	Green bit 6
23	DG5	O	Green bit 5
24	DGND	Power	Digital Ground
25	DG4	O	Green bit 4
26	DG3	O	Green bit 3
27	DG2	O	Green bit 2
28	DGND	Power	Digital Ground
29	DR7	O	Red bit 7
30	DR6	O	Red bit 6
31	DR5	O	Red bit 5
32	DGND	Power	Digital Ground
33	DR4	O	Red bit 4
34	DR3	O	Red bit 3
35	DR2	O	Red bit 2

Pin #	VAR-MX6CustomBoard Signal	Type	Description
36	DGND	Power	Digital Ground
37	DCLK	O	Clock
38	DGND	Power	Digital Ground
39	LR	O	Left / Right select
40	UD	O	Up / Down select

Table 2 - 20 Resistive LCD Connector Pin-out (J9)

#### 2.4.2.2 LCD Connector Pin-out (Capacitive) (J6)

Pin #	VAR-MX6CustomBoard Signal	Type	Description
1	UD	O	Up / down select
2	LR	O	Left / right select
3	NC		Not Connected
4	BASE_PER_3V3	Power	MX6CustomBoard peripherals VCC
5	BASE_PER_3V3	Power	MX6CustomBoard peripherals VCC
6	BASE_PER_3V3	Power	MX6CustomBoard peripherals VCC
7	BASE_PER_3V3	Power	MX6CustomBoard peripherals VCC
8	NC		Not Connected
9	ACBIAS	O	Data enable
10	DGND	Power	Digital Ground
11	DGND	Power	Digital Ground
12	DGND	Power	Digital Ground
13	DB7	O	Blue bit 7
14	DB6	O	Blue bit 6
15	DB5	O	Blue bit 5
16	DGND	Power	Digital Ground
17	DB4	O	Blue bit 4
18	DB3	O	Blue bit 3
19	DB2	O	Blue bit 2
20	DGND	Power	Digital Ground
21	DG7	O	Green bit 7
22	DG6	O	Green bit 6
23	DG5	O	Green bit 5
24	DGND	Power	Digital Ground
25	DG4	O	Green bit 4
26	DG3	O	Green bit 3
27	DG2	O	Green bit 2
28	DGND	Power	Digital Ground
29	DR7	O	Red bit 7
30	DR6	O	Red bit 6
31	DR5	O	Red bit 5

Pin #	VAR-MX6CustomBoard Signal	Type	Description
32	DGND	P	Digital Ground
33	DR4	O	Red bit 4
34	DR3	O	Red bit 3
35	DR2	O	Red bit 2
36	DGND	P	Digital Ground
37	NC		Not Connected
38	DCLK	Power	DCLK
39	HSYNC	O	Horizontal sync
40	VSYNC	O	Vertical sync

Table 2 –21 Capacitive LCD Connector Pin-out (J6)

### 2.4.3 Touch panel (J7)

The VAR-MX6CustomBoard provides support for two types of Touch panels: Resistive and Capacitive. Two different types of connectors are available on the VAR-MX6CustomBoard.

#### 2.4.3.1 Capacitive Touch panel connector Pin-out (J7)

Pin #	VAR-MX6CustomBoard Signal	Type	Description
1	DGND	Power	Digital Ground
2	VCC	Power	Power supply 3.3V
3	I2C_SCL	Power	I2C3 Clock
4	NC		Not Connected
5	I2C_SDA	Power	I2C3 Data
6	NC		Not Connected
7	RESET	DI	Reset signal
8	NC		Not Connected
9	CPT_INT	DI	Interrupt signal connected to GPIO3[7]
10	DGND	DI	Digital Ground

Table 2 - 22 Capacitive Touch panel Connector Pin-out (J7)

#### 2.4.3.2 Resistive Touch panel connector Pin-out (J4)

Pin #	VAR-MX6CustomBoard Signal	Type	Description
1	TS_X-	AIO	Touch Screen X Minus
2	TS_Y+	AIO	Touch Screen Y Plus
3	TS_X+	AIO	Touch Screen X Plus
4	TS_Y-	AIO	Touch Screen Y Minus

Table 2 - 23 Resistive Touch panel Connector Pin-out (J4)

#### 2.4.4 Backlight power supply connector (J23)<sup>[1]</sup>

VAR-MX6CustomBoard backlight power supply was designed for use with backlights up to 32V.

##### 2.4.4.1 Backlight power supply Connector Pin-Out (J23)

Pin #	VAR-MX6CustomBoard Signal	Type	Description
1	LED_BL_K	POWER	Power supply for backlight LED Minus
2	LED_BL_K	POWER	Power supply for backlight LED Minus
3	LED_BL_A	POWER	Power supply for backlight LED Plus
4	LED_BL_A	POWER	Power supply for backlight LED Plus

Table 2 –24 Backlight power supply Connector Pin-out (J23)

[1] Backlight rails are also available on J22- LVDS Header

#### 2.4.5 LVDS Interface Connector (J22)

The VAR-MX6CustomBoard LVDS connector is routed directly to the MX6 processor LVDS1 interface. In addition to the LVDS signals, the LVDS connector supports a backlight driver, supporting up to 32 V backlight LEDs.

##### 2.4.5.1 LVDS Signals Pin-Out (J22)

Pin #	Signal	Type	Description
1	BASE_PER_3V3	Power	Power supply 3.3V
2	BASE_PER_3V3	Power	Power supply 3.3V
3	DGND	Power	Digital Ground
4	DGND	Power	Digital Ground
5	LVDS1_TX0_N	DSO	LVDS1 Lane 0, Negative
6	LVDS1_TX0_P	DSO	LVDS1 Lane 0, Positive
7	DGND	Power	Digital Ground
8	LVDS1_TX1_N	DSO	LVDS1 Lane 1, Negative
9	LVDS1_TX1_P	DSO	LVDS1 Lane 1, Positive
10	DGND	Power	Digital Ground
11	LVDS1_TX2_N	DSO	LVDS1 Lane 2, Negative
12	LVDS1_TX2_P	DSO	LVDS1 Lane 2, Positive
13	DGND	Power	Digital Ground
14	LVDS1_CLK_N	DSO	LVDS1 Clock, Negative
15	LVDS1_CLK_P	DSO	LVDS1 Clock 0, Positive
16	DGND	Power	Digital Ground
17	LVDS1_TX3_N	DSO	LVDS1 Lane 3, Negative
18	LVDS1_TX3_P	DSO	LVDS1 Lane 3, Positive
19	NC		Not Connected

Pin #	Signal	Type	Description
20	PWM_BACKLIGHTEN	O	Backlight PWM brightness

Table 2 - 25 LVDS Connector Connector Pin-out (J22)

### 2.4.6 Parallel Camera Interface (J8)

Parallel camera interface is routed directly to the processor CSIO pins.

#### 2.4.6.1 Parallel Camera Connector Pin-Out (J8)

Pin #	VAR-MX6CustomBoard Signal	Type	Description
1	BASE_PER_3V3	POWER	Power supply 3.3V
2	CSIO_DAT12	IO	Camera Data12 signal
3	CSIO_DAT13	IO	Camera Data13 signal
4	CSIO_VSYNC	IO	Camera Vsync signal
5	CSIO_DAT14	IO	Camera Data14 signal
6	CSIO_DATA_EN	IO	Camera enable routed to GPIO5[20]
7	CSIO_DAT15	IO	Camera Data15 signal
8	CSIO_HSYNC	IO	Camera Hsync signal
9	CSIO_DAT16	IO	Camera Data16 signal
10	I2C3_SCL	IO	I2C camera control routed to I2C3
11	CSIO_DAT17	IO	Camera Data17 signal
12	I2C3_SDA	IO	I2C camera control routed to I2C3
13	CSIO_DAT18	IO	Camera Data18 signal
14	CSIO_PIXCLK	IO	Camera Pixel Clock signal
15	CSIO_DAT19	IO	Camera Data19 signal
16	DGND	POWER	Digital Ground

Table 2 - 26 Parallel camera Connector Pin-out (J8)

### 2.4.7 SD/MMC1 (J32)

SD/MMC1 expansion connector pins are directly connected to the VAR-SOM-MX6 pins.

#### 2.4.7.1 SD/MMC Header Pin-Out (J32)

Pin #	VAR-MX6CustomBoard Signal	Type	Description
1	BASE_PER_3V3	POWER	Power Supply 3.3V
2	SDMMC1_CLK	O	SDMMC Clock signal
3	SDMMC1_CMD	O	SDMMC Command signal
4	NC		Not Connected
5	SDMMC1_DAT0	IO	SDMMC Data 0 signal
6	SDMMC1_DAT1	IO	SDMMC Data 1 signal

Pin #	VAR-MX6CustomBoard Signal	Type	Description
7	SDMMC1_DAT3	IO	SDMMC Data 3 signal
8	BSEL1_SDMMC1_GPIO_CAM_CR TL	IO	Additional signal routed to GPIO3[13]
9	SDMMC1_DAT2	IO	SDMMC Data 2 signal
10	DGND	POWER	Digital Ground

Table 2 - 27 SD/MMC1 Header Pin-out (J32)

## 2.4.8 AUDIO (J37)

### 2.4.8.1 AUDIO Header Pin-Out (J37)

The audio connector exposes Digital Audio AudMUX 4/SPDIF signals, (line-in and headphone-out, available on the audio jacks). Those signals are driven by VAR-SOM-MX6 audio codec.

Pin #	VAR-MX6CustomBoard Signal	Type	Description
1	BASE_PER_3V3	Power	Power supply 3.3V
2	AUDMUX4_RXC_PCIE_RESET_B	I	Audio Mux RXC signal
3	AUDMUX4_TXC	O	Audio Mux TXC signal
4	AUDMUX4_RXFS_RX485_TX_EN	I	Audio Mux RXFS signal
5	AUDMUX4_TXD	O	Audio Mux TXD signal
6	SPDIF_OUT_PCIE_PCIE_WAKE_B	O	SPDIF Out signal
7	AUDMUX4_TXFS	O	Audio Mux TXFS signal
8	SPDIF_IN_PCIE_DIS_B	I	SPDIF In signal
9	AUDMUX4_RXD	I	Audio Mux RXD signal
10	DGND	Power	

Table 2 - 28 Audio Connector Pin-out (J7)

## 2.4.9 CAN1, UART2 (RS485) & DMIC Interfaces (J26, J35)

### 2.4.9.1 UART2

UART2 interface is directly connected to VAR-SOM-MX6 pins, and exposed by J35. However it is also connected to a RS485 transceiver, exposing RS485 signals by J26. 1K resistor is connected in serial to the Rx line to avoid conjunctions in case both interfaces are accidentally used simultaneous.

### 2.4.9.2 CAN

CAN bus interface is driven by a CAN bus transceiver (SN65HVD234DR ) connected to the VAR-SOM-MX6 CAN1 interface pins.

### 2.4.9.3 DMIC

The VAR-MX6CustomBoard features a digital microphone device, connected to the VAR-SOM-MX6 DMIC interface. The DMIC interface is also exposed by J26 and by the CSI-2 Camera interface connector.

#### 2.4.9.4 CAN, RS422/485 Connector Pin-Out (J26)

Pin #	VAR-MX6CustomBoard Signal	Type	Description
1	CANL	IO	CAN L signal
2	CANH	IO	CAN H Signal
3	DGND	Power	Digital Ground
4	DGND	Power	Digital Ground
5	B	I	RS422 B signal
6	A	I	RS422 A signal
7	DGND	Power	Digital Ground
8	DGND	Power	Digital Ground
9	Z	O	RS422 Z signal
10	Y	O	RS422 Y signal

Table 2 - 29 CAN, RS422/485 Pin-out (J26)

#### 2.4.9.5 Miscellaneous Connector Pin-Out (J35)

Pin #	VAR-MX6CustomBoard Signal	Type	Description
1	BASE_PER_3V3	POWER	Power supply 3.3V
2	PWM_BACKLIGHTEN	O	LED Backlight PWM signal
3	CLKO2	O	Reference Clock 2 signal
4	DMIC_CLK	O	Digital microphone Clock
5	DMIC_DAT	I	Digital microphone Data
6	UART2_TXD	O	UART2 Transmit signal
7	UART2_CTS	I	UART2 Clear to Send signal
8	UART2_RTS	O	UART2 Ready to Send signal
9	UART2_RXD	I	UART2 Receive signal
10	DGND	POWER	Digital Ground

Table 2 - 30 Miscellaneous Connector Pin-out (J35)

SPI1/I2C1, 3 (J28)

SPI1/I2Cx expansion connector pins are directly connected to the VAR-SOM-MX6 pins.

SPI1/I2C1, 3 Connector Pin-out (J28)

Pin #	VAR-MX6CustomBoard Signal	Type	Description
1	BASE_PER_3V3	POWER	Power supply 3.3V
2	CSPI1_SCLK	O	SPI Clock signal
3	CSPI1_CS0	O	SPI Chip Select 0 signal
4	CSPI1_SIMO	O	SPI SIMO signal
5	I2C3_SCL	IO	I2C3 Clock signal
6	CSPI1_SOMI	I	SPI SOMI signal
7	I2C1_SDA	IO	IIC1 Data signal
8	I2C3_SDA	IO	IIC3 Data signal
9	I2C1_SCL	IO	IIC1 Clock signal
10	DGND	POWER	Digital Ground

Table 2 - 31 SPI1/I2Cx Connector Pin-out (J28)

2.4.9.6 I2C3 Connector Pin-Out (J2)

Pin #	VAR-MX6CustomBoard Signal	Type	Description
1	BASE_PER_3V3	POWER	Power supply 3.3V
2	VCC_5V	POWER	Power supply 5V
3	BASE_PER_3V3	POWER	Power supply 3.3V
4	BOOTSELO/CPT_INT	IO	GPIO3[7] signal
5	I2C3_SDA	IO	I2C3 Data signal
6	NC		Not Connected
7	I2C3_SCL	IO	IIC3 Clock signal
8	NC		Not Connected
9	DGND	POWER	IIC1 Clock signal
10	DGND	POWER	Digital Ground

Table 2 - 32 I2C3 Connector Pin-out (J2)

## 2.4.10 DSI (J24)

The DSI connector signals are routed directly to the i.MX6 processor's DSI interface pins.

### 2.4.10.1 DSI Connector Pin-out (J24)

Pin #	VAR-MX6CustomBoard Signal	Type	Description
<b>1</b>	BASE_PER_3V3	POWER	Power supply 3.3V
<b>2</b>	NC		Not Connected
<b>3</b>	DSI_D1M	DSO	DSI Lane 1 Negative
<b>4</b>	DSI_D0M	DSO	DSI Lane 0 Negative
<b>5</b>	DSI_D1P	DSO	DSI Lane 1 Positive
<b>6</b>	DSI_D0P	DSO	DSI Lane 0 Positive
<b>7</b>	DSI_CLK0M	DSO	DSI Clock Negative
<b>8</b>	NC		Not Connected
<b>9</b>	DSI_CLK0P	DSO	DSI Clock Positive
<b>10</b>	DGND	POWER	Digital Ground

Table 2 - 33 DSI Connector Pin-out (J24)

## 2.4.11 CSI2 Camera (J17)

CSI2 camera connector signals are routed directly to the i.MX6 processor DSI interface pins

### CSI2 Camera Connector Pin-out (J17)

Pin #	VAR-MX6CustomBoard Signal	Type	Description
<b>A1</b>	CAM_EN_CSPI_CS1	O	Camera power enable
<b>A2</b>	DGND	POWER	Digital Ground
<b>A3</b>	CSI_D3M	DSIO	CSI Data3 Negative
<b>A4</b>	CSI_D3P	DSIO	CSI Data3 Positive
<b>A5</b>	DGND	POWER	Digital Ground
<b>A6</b>	CSI_D2P	DSIO	CSI Data2 Positive
<b>A7</b>	CSI_D2M	DSIO	CSI Data2 Negative
<b>A8</b>	DGND	POWER	Digital Ground
<b>A9</b>	CSI_D1M	DSIO	CSI Data1 negative
<b>A10</b>	CSI_D1P	DSIO	CSI Ddata1 positive
<b>A11</b>	DGND	POWER	Digital Ground
<b>A12</b>	DGND	POWER	Digital Ground
<b>A13</b>	CSI_CLK0P	DSIO	CSI Clock positive
<b>A14</b>	CSI_CLK0M	DSIO	CSI Clock negative
<b>A15</b>	DGND	POWER	Digital Ground
<b>A16</b>	CSI_D0P	DSIO	CSI Data0 positive

Pin #	VAR-MX6CustomBoard Signal	Type	Description
<b>A17</b>	CSI_D0M	DSIO	CSI Data0 negative
<b>A18</b>	DGND	POWER	Digital Ground
<b>B1</b>	GPIO_EXP_INT	I	Interrupt from GPIO expander
<b>B2</b>	NC		Not Connected
<b>B3</b>	NC		Not Connected
<b>B4</b>	NC		Not Connected
<b>B5</b>	NC		Not Connected
<b>B6</b>	NC		Not Connected
<b>B7</b>	NC		Not Connected
<b>B8</b>	DMIC_DAT	I	Digital Microphone Data signal
<b>B9</b>	DMIC_CLK	O	Digital Microphone Clock signal
<b>B10</b>	BASE_PER_3V3	POWER	Power supply 3.3V
<b>B11</b>	DGND	POWER	Digital Ground
<b>B12</b>	I2C1_SCL	IO	Camera control I2C signal
<b>B13</b>	I2C1_SDA	IO	Camera control I2C signal
<b>B14</b>	VIO	POWER	Power supply 3.3V
<b>B15</b>	NC		Not Connected
<b>B16</b>	BSEL1_SDMMC1_GPIO_CAM_CTRL	O	Enable signal routed to GPIO3[13]
<b>B17</b>	CLKO2	O	Camera Reference Clock signal
<b>B18</b>	DGND	POWER	Digital Ground

Table 2 - 34 CSI2 Camera Connector Pin-out (J17)

## 2.5 User Interfaces

### 2.5.1 LED Indications

#### 2.5.1.1 Power-On LED

D1 indicates that the 5V power rail is on.

#### 2.5.1.2 Mini PCIE LEDs

PCIE LEDs are directly controlled by PCIE module, the below LEDs are available:

- D26 – WPAN
- D24 – WLAN
- D25 - WWAN

## 2.5.2 Control Buttons

### 2.5.2.1 Power-On (SW1)

Power-On Switch, enable VAR-MX6Customboard main power

### 2.5.2.2 Reset Button (SW4)

System Hardware-reset

### 2.5.2.3 User Button (SW2)

Software controllable button

### 2.5.2.4 Boot Select (SW3)

The boot select switch sets the VAR-SOM-MX6 boot source and sequence. Refer to the VAR-SOM-MX6 module data sheet for a detailed description.

Position	Logic Level	Boot Source
<b>Released</b>	'1'	On-SOM NAND flash
<b>Pressed</b>	'0'	External (SD/MMC)

Table 2 - 35 Boot Select Switch Modes

## 2.5.3 Power Input (J18/J19)

The VAR-MX6CustomBoard is powered by a 7.5 V to 12 V DC power supply, using one of the connectors below (assembly option).

### 2.5.3.1 DC-in Jack (J19)

The DC-in power jack is compatible with a standard 2.5 mm / 5.5 mm power plug.

### 2.5.3.2 Terminal Block (J18)

A Terminal Block can be assembled if a DC jack is not required

Pin #	Signal
<b>1</b>	PWR_IN1
<b>2</b>	PWR_IN2

Table 2 - 36 Terminal Block Connector Pin-out (J19)

### 2.5.3.3 RTC Backup Battery (JBT1)

The VAR-MX6CustomBoard features a CR1225 battery holder powering the VAR-MX6Customboard's DS1337 RTC.

## 2.6 Absolute Maximum Electrical Specifications

	Min	Max
Main Power Supply DC-IN	-0.3 V	23 V
External Interfaces	Unless otherwise specified, refer to the VAR-SOM-MX6 data sheet	

Table 2 - 37 Absolute Maximum Electrical Specifications

## 2.7 Operational Electrical Specifications

	Min	Max
Main Power supply, DC-IN	7.5V	12V
External Interfaces	Unless otherwise specified refer to VAR-SOM-MX6 data sheet	

Table 2 - 38 Operational Electrical Specifications

### 3 Legal Notice

Variscite Ltd. (“Variscite”) products and services are sold subject to Variscite terms and conditions of sale, delivery and payment supplied at the time of order acknowledgement.

Variscite warrants performance of its products to the specifications in effect at the date of shipment. Variscite reserves the right to make changes to its products and specifications or to discontinue any product or service without notice. Customers should therefore obtain the latest version of relevant product information from Variscite to verify that their reference is current.

Testing and other quality control techniques are utilized to the extent that Variscite deems necessary to support its warranty.

Specific testing of all parameters of each device is not necessarily performed unless required by law or regulation.

In order to minimize risks associated with customer applications, the customer must use adequate design and operating safeguards to minimize inherent or procedural hazards. Variscite is not liable for applications assistance or customer product design. The customer is solely responsible for its selection and use of Variscite products. Variscite is not liable for such selection or use or for use of any circuitry other than circuitry entirely embodied in a Variscite product.

Variscite products are not intended for use in life support systems, appliances, nuclear systems or systems where malfunction can reasonably be expected to result in personal injury, death or severe property or environmental damage. Any use of products by the customer for such purposes is at the customer’s own risk.

Variscite does not grant any license (express or implied) under any patent right, copyright, mask work right or other intellectual property right of Variscite covering or relating to any combination, machine, or process in which its products or services might be or are used. Any provision or publication of any third party’s products or services does not constitute Variscite’s approval, license, warranty or endorsement thereof. Any third party trademarks contained in this document belong to the respective third party owner.

Reproduction of information from Variscite datasheets is permissible only if reproduction is without alteration and is accompanied by all associated copyright, proprietary and other notices (including this notice) and conditions. Variscite is not liable for any un-authorized alteration of such information or for any reliance placed thereon.

Any representations made, warranties given, and/or liabilities accepted by any person which differ from those contained in this datasheet or in Variscite’s standard terms and conditions of sale, delivery and payment are made, given and/or accepted at that person’s own risk. Variscite is not liable for any such representations, warranties or liabilities or for any reliance placed thereon by any person.

### 4 Warranty Terms

Variscite guarantees hardware products against defects in workmanship and material for a period of one (1) year from the date of shipment. Your sole remedy and Variscite’s sole liability shall be for Variscite, at its sole discretion, to either repair or replace the defective hardware product at no charge or to refund the purchase price. Shipment costs in both directions are the responsibility of the customer. This warranty is void if the hardware product has been altered or damaged by accident, misuse or abuse.

Disclaimer of Warranty

THIS WARRANTY IS MADE IN LIEU OF ANY OTHER WARRANTY, WHETHER EXPRESSED, OR IMPLIED, OF MERCHANTABILITY, FITNESS FOR A SPECIFIC PURPOSE, NON-INFRINGEMENT OR THEIR EQUIVALENTS UNDER THE LAWS OF ANY JURISDICTION, EXCEPT THE WARRANTY EXPRESSLY STATED HEREIN. THE REMEDIES SET FORTH HEREIN SHALL BE THE SOLE AND EXCLUSIVE REMEDIES OF ANY PURCHASER WITH RESPECT TO ANY DEFECTIVE PRODUCT.

Limitation on Liability

UNDER NO CIRCUMSTANCES SHALL VARISCITE BE LIABLE FOR ANY LOSS, DAMAGE OR EXPENSE SUFFERED OR INCURRED WITH RESPECT TO ANY DEFECTIVE PRODUCT. IN NO EVENT SHALL VARISCITE BE LIABLE FOR ANY INCIDENTAL OR CONSEQUENTIAL DAMAGES THAT YOU MAY SUFFER DIRECTLY OR INDIRECTLY FROM USE OF ANY PRODUCT.

## 5 Contact Information

Headquarters:

### **Variscite Ltd.**

Variscite Ltd.  
9 Hamelacha St.  
Lod 70100  
POB 1121  
Israel

Tel: +972 (9) 9562910

Fax: +972 (9) 9589477

Sales: [sales@variscite.com](mailto:sales@variscite.com)

Technical Support: [support@variscite.com](mailto:support@variscite.com)

Corporate Website: [www.variscite.com](http://www.variscite.com)

