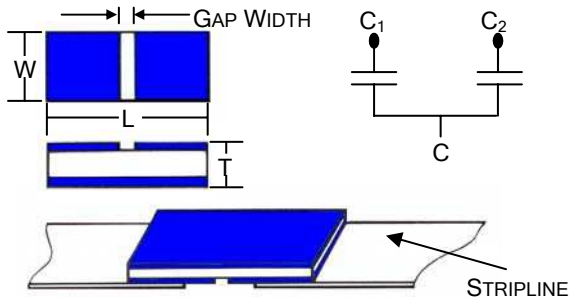
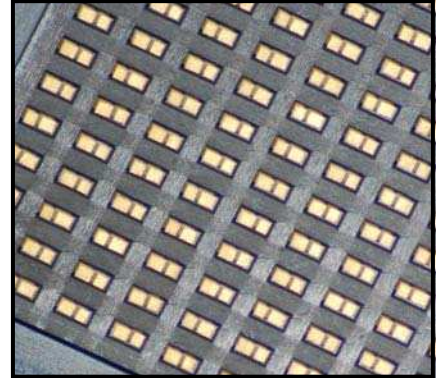


The S-Series Single Layer Gap Capacitors (SLCs) are ideally suited for applications such as micro-strip circuits or stripline microwaves circuits.

S-Series SLCs are suitable solutions for applications that require:

- Most minimum insertion loss.
- Lowest heat exertion levels.
- Controlled gap in micro-strip.
- Custom sized widths to adhere to stripline gaps.
- Direct mounting onto stripline without wire bonding.
- Various attachment options, including solder, epoxy, and eutectics.



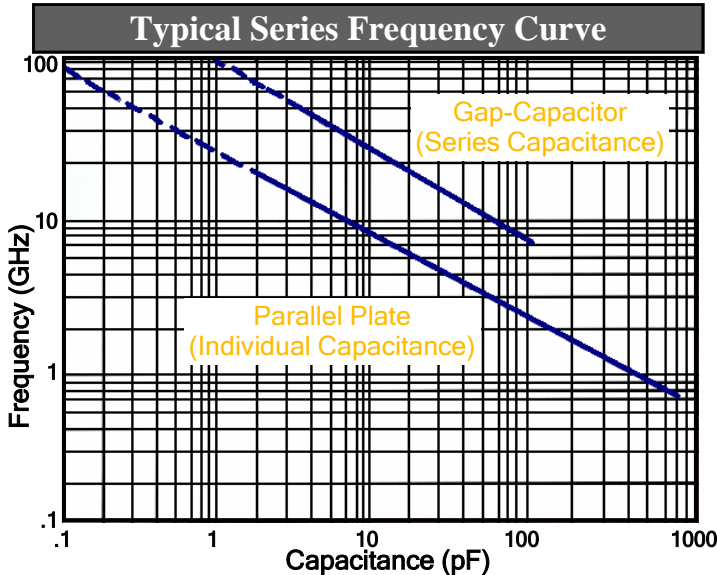
### SELECTION GUIDE in Inches (mm)

Case Size	S20	S24	S25	S29	S30	S50		
Width (W)	.020 (.508)	.025 (.635)	.025 (.635)	.030 (.762)	.030 (.762)	.050 (1.27)		
Length (L)	.040 (1.02)	.040 (1.02)	.050 (1.27)	.050 (1.27)	.080 (2.03)	.080 (2.03)		
Thickness (T)	.005 (.127)	.005 (.127)	.005 (.127)	.005 (.127)	.005 (.127)	.006 (.152)		
Max. Gap Width	.005 (.127)	.005 (.127)	.010 (.254)	.010 (.254)	.020 (.508)	.020 (.508)		
Equivalent Series Capacitance (pF)	Temperature Coefficient Code	G	0.5	0.6	0.7	1.1	1.5	2.4
		N	0.7	1.0	1.1	1.8	2.2	3.9
		P	1.0	1.3	1.5	2.4	3.0	4.7
		R	1.8	2.2	2.7	4.3	5.1	8.2
		X	12	18	22	33	39	56
		Z	27	33	47	68	82	150

Tolerance  $\pm .002$  (.050) or 10%, whichever is greater

**Dielectric Strength:** 2.5 x WVDC min @ 25°C, 50 mA max  
**Test Conditions:** All Values @ 1Mhz, 1.0 $\pm$ 0.2Vrms, 25°C

\*\* All capacitors are rated at 50 VDC, for other sizes, voltages, and other configurations, contact the Factory. \*\*



### ORDERING INFORMATION

Style	Case Size	Temp. Coefficient	Capacitance	Tolerance	Voltage	Termination	Hi-Reli Testing
S	20	X	120	K	500	G	- A
S Gap Series	20 24 25 29 30 50	G N P R X Z	First 2 digits are Significant; Third digit indicates number of Zeros  Examples: 201 = 200pF 2R2 = 2.2pF	C $\pm 0.25$ pF D $\pm 0.50$ pF J $\pm 5\%$ K $\pm 10\%$ M $\pm 20\%$ Z -20%, +80%	First 2 digits are Significant; Third digit indicates number of Zeros  Examples: 201 = 200V 151 = 150V 202 = 2000V	G Gold Plated (RoHS Compliant)	(Optional) A = Group A B = Groups A & B C = Group C D = Special Testing