



特徴 FEATURES

- **高輝度**
High Brightness
- **小型面実装パッケージ**
Small SMD Package
- **薄型**
Thin Type

用途 APPLICATIONS

- **表示灯**
Indicators
- **電飾**
Illuminations
- **遊技機器**
Amusement

製品概要 PRODUCT SUMMARY

| 発光色 Emitted Color | チップ Chip | 特徴 Features | サイズ(mm) Size |
|----------------------|-------------|--|------------------|
| ● | 1in1 | 高輝度・小型・薄型 / High Brightness・Small・Thin Type | 3.0×2.0 t=1.3 |

最大定格 MAXIMUM RATINGS

| Item | 逆電圧 Reverse Voltage | 順電流 Forward Current | 許容損失 Power Dissipation | 動作温度 Operating Temp. | 保存温度 Storage Temp. | 半田付け温度* Soldering Temp.* |
|--------|------------------------|------------------------|---------------------------|-------------------------|-----------------------|-----------------------------|
| Symbol | V _R | I _F | P _D | T _{op} | T _{stg} | T _{sol} |
| Unit | V | mA | mW | °C | °C | °C |
| Data | 5 | 50 | 125 | -25~+85 | -30~+100 | +260 |

Ta=25°C

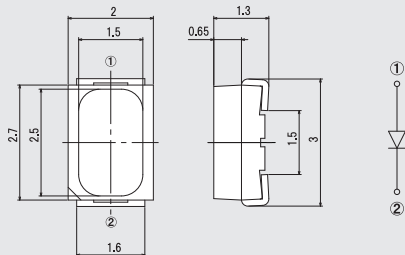
電気的光学的特性 ELECTRO-OPTICAL CHARACTERISTICS

| Item | 順電圧 Forward Voltage | | | ドミナント波長 Dominant Wave Length | | | 光度 Luminous Intensity | | | 指向角 Viewing Angle | 順電流条件 IF Conditions |
|--------|------------------------|------|------|---------------------------------|------|------|--------------------------|------|------|----------------------|------------------------|
| | Min. | Typ. | Max. | Min. | Typ. | Max. | Min. | Typ. | Max. | | |
| Symbol | V _F | | | λ _d | | | I _v | | | 2θ 1/2 | |
| Unit | V | | | nm | | | cd | | | deg | mA |
| Data | - | 2.2 | 2.5 | - | 625 | - | 0.35 | 0.50 | 0.85 | 115 | 20 |

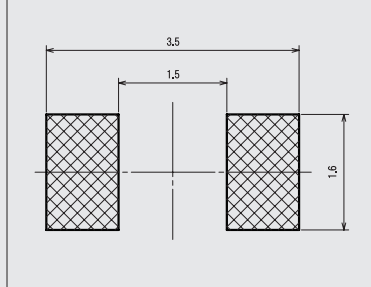
Ta=25°C

*最大5秒以内
Maximum 5s

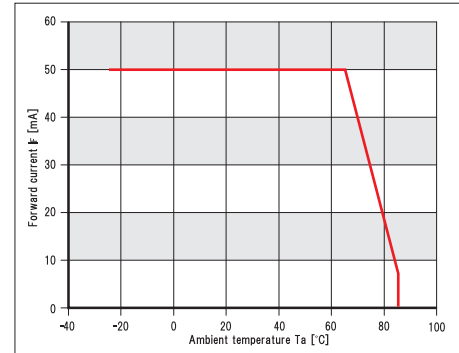
外形寸法 DIMENSIONS (Unit : mm)



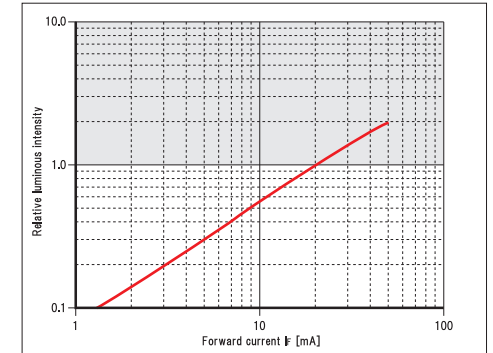
推奨ランドパターン図 (Recommended Soldering Pattern)



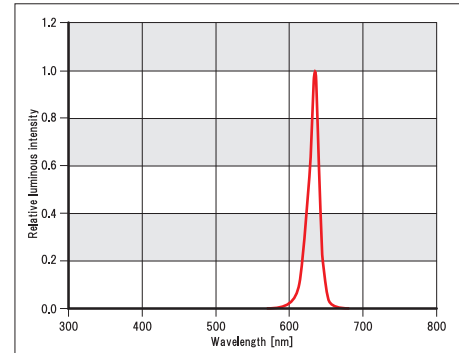
順電流 - 周囲温度特性 Forward current vs. Ambient temperature



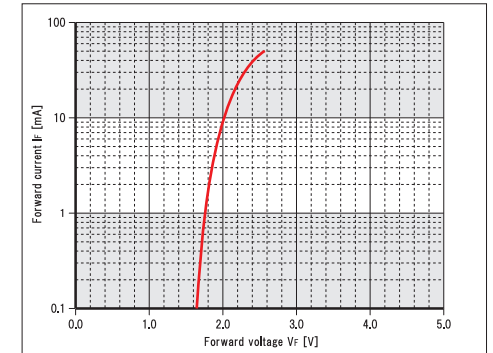
光度 - 順電流特性 Relative luminous intensity vs. Forward current (Ta=25°C)



発光波長分布特性 Relative luminous intensity vs. Wavelength (Ta=25°C)



順電流 - 順電圧特性 Forward current vs. Forward voltage (Ta=25°C)



指向特性 Radiation pattern

