

SINGLE OPERATIONAL AMPLIFIER

■ GENERAL DESCRIPTION

NJM2107 is a single operational amplifier of ultra miniature surface mount package.

NJM2107 has features of low operating supply voltage and low saturation output voltage. The NJM2107 is suitable for small electronic equipments and hybrid circuits.

■ PACKAGE OUTLINE



NJM2107F

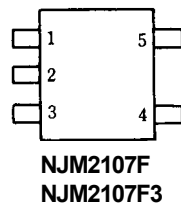


NJM2107F3

■ FEATURES

- Operating Voltage ($V^+ / V^- = \pm 1.0V$ to $\pm 3.5V$)
- Low Output Saturation ($4V_{P-P}$ at single 5V supply)
- V^- Shield Plate between +Input and -Input
- Suitable Pin Arrangement for Application
- Mounted in Ultra Miniature 2.0 X 1.25mm (1/8 of DMP8 package)
- Bipolar Technology

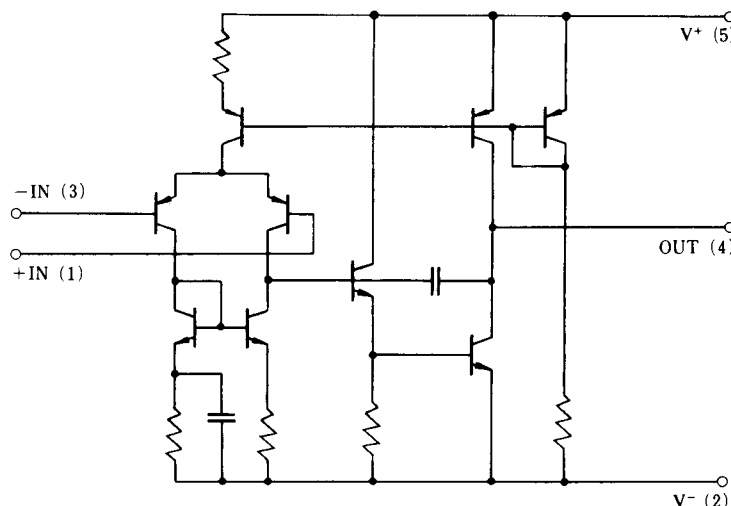
■ PIN CONFIGURATION



PIN FUNCTION

- 1. +INPUT
- 2. V^-
- 3. -INPUT
- 4. OUTPUT
- 5. V^+

■ EQUIVALENT CIRCUIT



NJM2107

■ ABSOLUTE MAXIMUM RATINGS

(Ta=25°C)

PARAMETER	SYMBOL	RATINGS	UNIT
Supply Voltage	V ⁺ /V ⁻	± 3.5	V
Differential Input Voltage	V _{ID}	± 7	V
Input Voltage	V _{IC}	± 3.5	V
Power Dissipation	P _D	(SOT-23-5) 200 (SC88A) 250 (note1)	mW
Operating Temperature Range	T _{opr}	-40~+85	°C
Storage Temperature Range	T _{stg}	-40~+125	°C

(note1) On the PCB “ EIA/JEDEC (76.2×114.3×1.6mm, two layers, FR-4) “

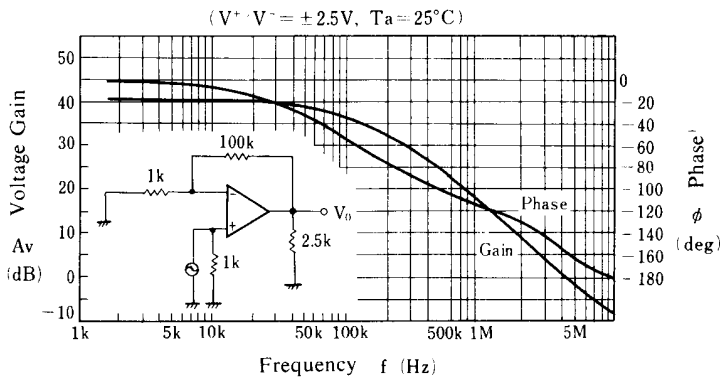
■ ELECTRICAL CHARACTERISTICS

(V⁺/V⁻=±2.5V, Ta=25°C)

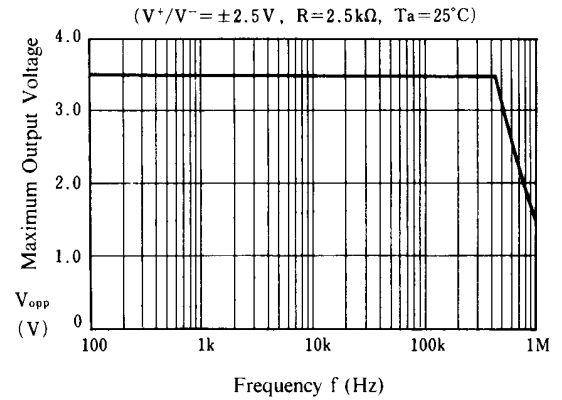
PARAMETER	SYMBOL	TEST CONDITION	MIN.	TYP.	MAX.	UNIT
Input Offset Voltage	V _{IO}	R _S =10kΩ	-	1	6	mV
Input Offset Current	I _{IO}	I ⁺ -I ⁻	-	5	200	nA
Input Bias Current	I _B		-	100	500	nA
Input Common Mode Voltage Range	V _{ICM}		± 1.5	-	-	V
Large Signal Voltage Gain	A _V	R _L =10kΩ, V _O =± 2.0V	60	80	-	dB
Output Voltage Swing	V _{OM}	R _L =2.5kΩ	± 2.0	± 2.2	-	V
Common Mode Rejection Ratio	CMR	R _S ≤10kΩ	60	80	-	dB
Supply Voltage Rejection Ratio	SVR	R _S ≤10kΩ	60	70	-	dB
Slew Rate	SR	V _{IN} =± 1V _{P-P} , A _{CL} =+1	-	3	-	V/μs
Operating Current	I _{CC}		1	2	3	mA

■ TYPICAL CHARACTERISTICS

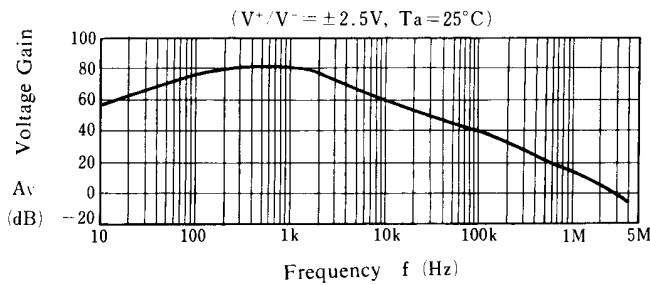
Voltage Gain, Phase vs. Frequency



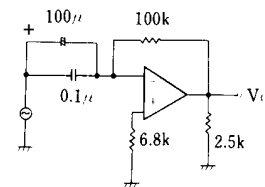
Maximum Output Voltage vs. Frequency



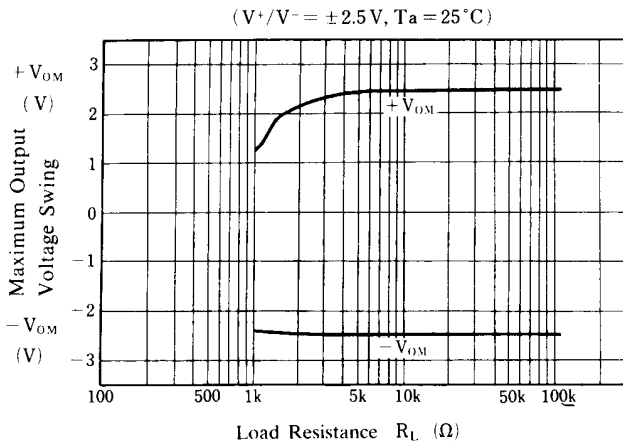
Voltage Gain, vs. Frequency



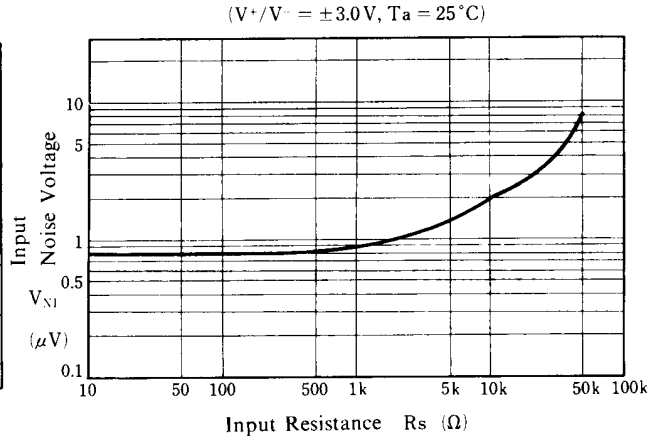
Test Circuit



Maximum Output Voltage Swing vs. Load Resistance

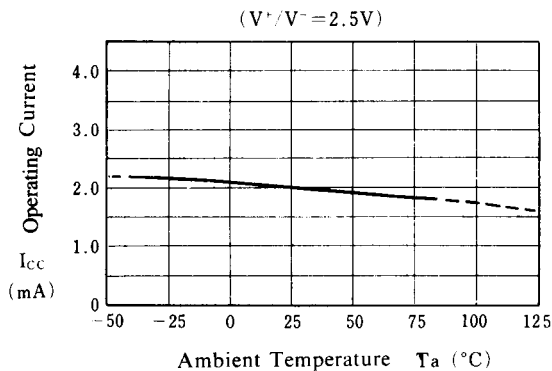


Input Noise Voltage vs. Input Resistance

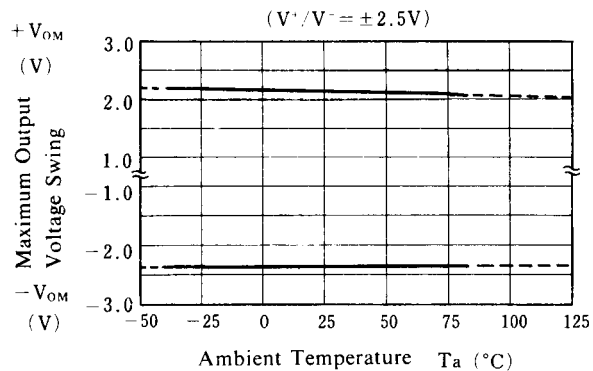


■ TYPICAL CHARACTERISTICS

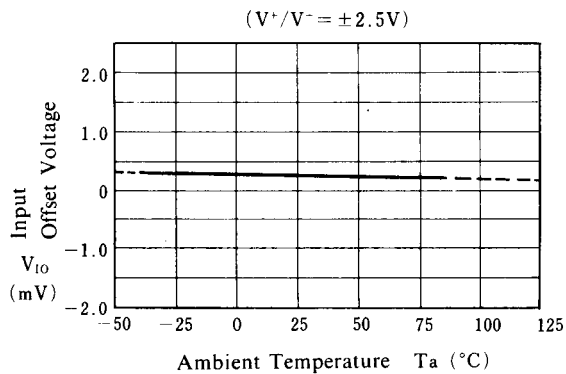
Operating Current vs. Temperature



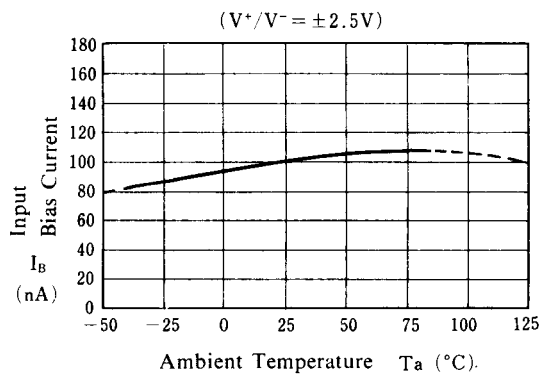
Maximum Output Voltage Swing vs. Temperature



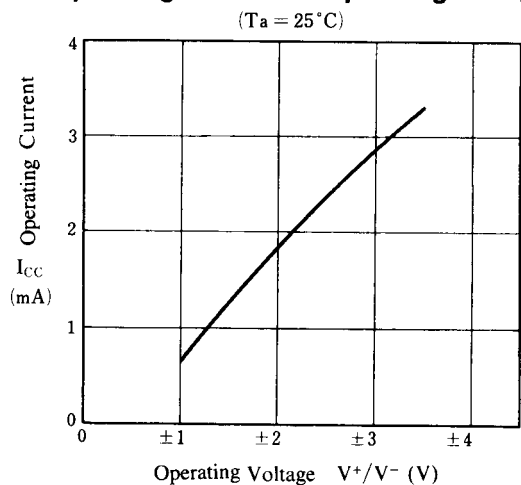
Input Offset Voltage vs. Temperature



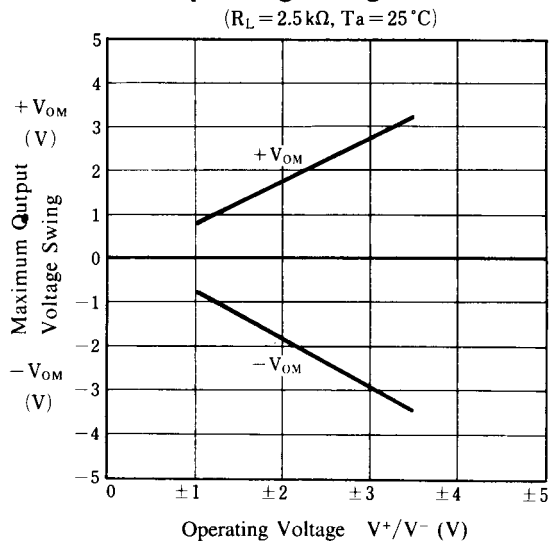
Input Bias Current vs. Temperature



Operating Current vs. Operating Voltage

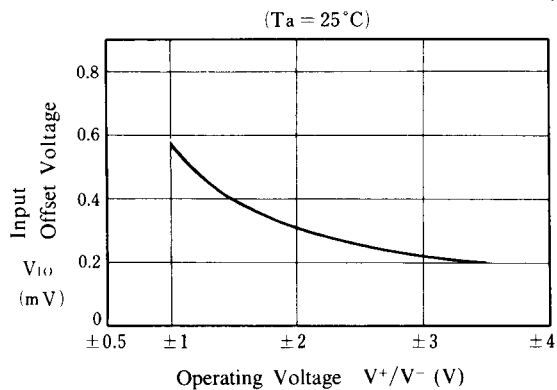


Maximum Output Voltage Swing vs. Operating Voltage



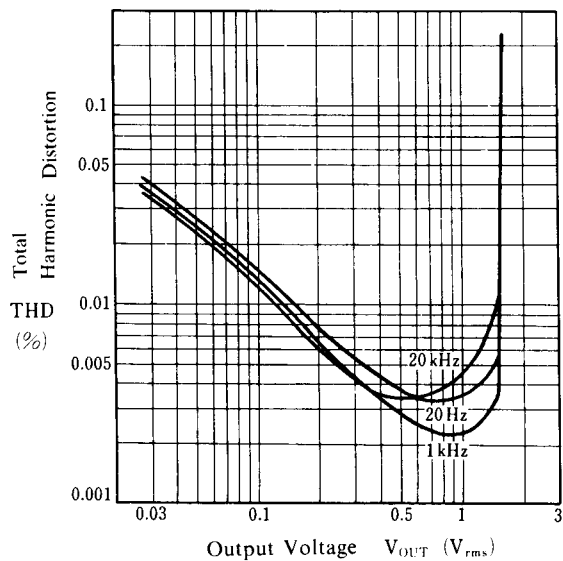
■ TYPICAL CHARACTERISTICS

Input Offset Voltage vs. Operating Voltage



Total Harmonic Distortion vs. Output Voltage

($V^+/V^- = \pm 2.5\text{V}$, $R_L = 2.5\text{k}\Omega$, Gain = 10dB, $T_a = 25^\circ\text{C}$)



[CAUTION]

The specifications on this databook are only given for information, without any guarantee as regards either mistakes or omissions. The application circuits in this databook are described only to show representative usages of the product and not intended for the guarantee or permission of any right including the industrial rights.