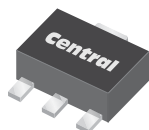


CXSH-4

**SURFACE MOUNT
SILICON SCHOTTKY RECTIFIER**



SOT-89 CASE



www.centrasemi.com

DESCRIPTION:

The CENTRAL SEMICONDUCTOR CXSH-4 type is a Schottky barrier rectifier mounted in an epoxy molded case using a metal to silicon junction to yield low forward voltage drop. This device utilizes a single chip with anode connections made to PIN 1 and PIN 3.

MARKING: FULL PART NUMBER

MAXIMUM RATINGS: ($T_A=25^{\circ}\text{C}$)

Peak Repetitive Reverse Voltage
DC Blocking Voltage
RMS Reverse Voltage
Average Forward Current
Peak Forward Surge Current, $t_p=8.3\text{ms}$
Operating and Storage Junction Temperature

SYMBOL

V_{RRM} 40
 V_R 40
 $V_{R(RMS)}$ 28
 I_O 1.0
 I_{FSM} 10
 T_J, T_{stg} -65 to +150

UNITS

V
V
V
A
A
 $^{\circ}\text{C}$

ELECTRICAL CHARACTERISTICS: ($T_A=25^{\circ}\text{C}$ unless otherwise noted)

SYMBOL	TEST CONDITIONS
I_R	$V_R=40\text{V}$
I_R	$V_R=40\text{V}, T_A=100^{\circ}\text{C}$
V_F	$I_F=1.0\text{A}$

MAX

1.0
10
0.55

UNITS

mA
mA
V

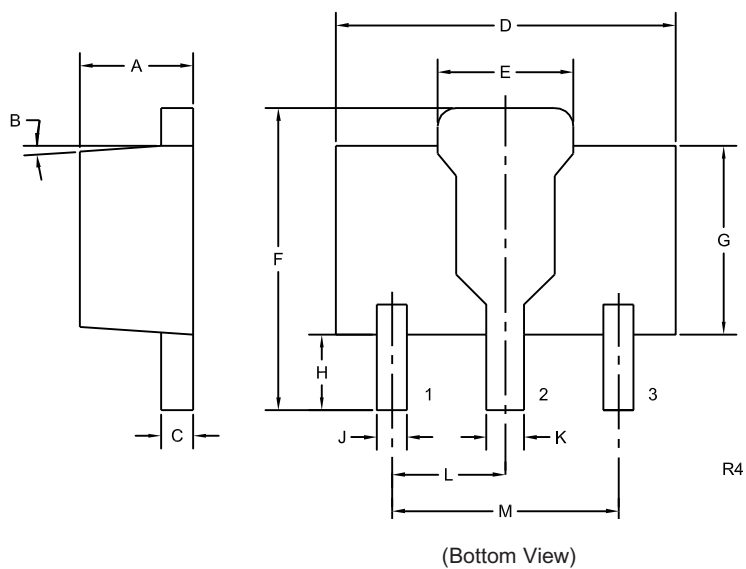
CXSH-4

SURFACE MOUNT

SILICON SCHOTTKY RECTIFIER



SOT-89 CASE - MECHANICAL OUTLINE

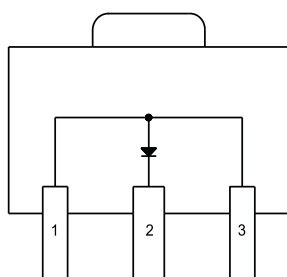


LEAD CODE:

- 1) Anode
- 2) Cathode
- 3) Anode

MARKING:

FULL PART NUMBER



Bottom View
(Tab not shown)

SYMBOL	INCHES		MILLIMETERS	
	MIN	MAX	MIN	MAX
A	0.055	0.067	1.40	1.70
B	4°		4°	
C	0.014	0.018	0.35	0.46
D	0.173	0.185	4.40	4.70
E	0.064	0.074	1.62	1.87
F	0.146	0.177	3.70	4.50
G	0.090	0.106	2.29	2.70
H	0.028	0.051	0.70	1.30
J	0.014	0.019	0.36	0.48
K	0.017	0.023	0.44	0.58
L	0.059		1.50	
M	0.118		3.00	

SOT-89 (REV: R4)

R7 (19-February 2010)