

CMMR1F-02 CMMR1F-06
CMMR1F-04 CMMR1F-08

**SURFACE MOUNT
FAST RECOVERY SILICON RECTIFIER
1 AMP, 200 THRU 800 VOLTS**



SOD-123F CASE

• Device is **Halogen Free** by design



www.centralemi.com

DESCRIPTION:

The CENTRAL SEMICONDUCTOR CMMR1F series are high quality 1.0 amp surface mount silicon rectifiers, well constructed, highly reliable components designed for use in all types of commercial, industrial, entertainment, computer, and automotive applications.

MARKING CODE: SEE MARKING CODE TABLE ON FOLLOWING PAGE

FEATURES:

- High reverse voltage capability
- Low leakage current
- Low reverse recovery times
- Low package profile (1.08mm MAX)

MAXIMUM RATINGS: ($T_A=25^\circ\text{C}$ unless otherwise noted)

	SYMBOL	CMMR1F				UNITS
		-02	-04	-06	-08	
Peak Repetitive Reverse Voltage	V_{RRM}	200	400	600	800	V
DC Blocking Voltage	V_R	200	400	600	800	V
RMS Reverse Voltage	$V_{R(RMS)}$	140	280	420	560	V
Average Forward Current ($T_L=110^\circ\text{C}$)	I_O		1.0			A
Peak Forward Surge Current (8.3ms)	I_{FSM}		30			A
Operating and Storage Junction Temperature	T_J, T_{stg}		-65 to +150			$^\circ\text{C}$
Thermal Resistance	θ_{JL}		30			$^\circ\text{C/W}$

ELECTRICAL CHARACTERISTICS: ($T_A=25^\circ\text{C}$ unless otherwise noted)

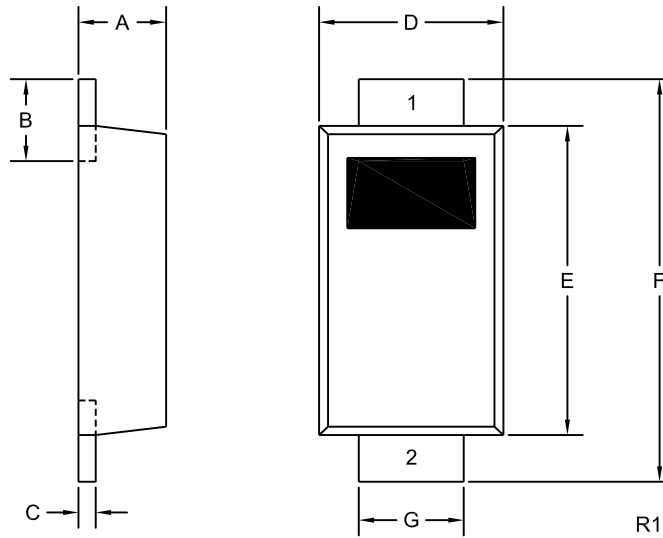
SYMBOL	TEST CONDITIONS	TYP	MAX	UNITS
I_R	$V_R=\text{Rated } V_{RRM}$		1.0	μA
I_R	$V_R=\text{Rated } V_{RRM}, T_A=125^\circ\text{C}$		50	μA
V_F	$I_F=1.0\text{A}$		1.3	V
C_J	$V_R=4.0\text{V}, f=1.0\text{MHz}$	9.0		pF
t_{rr}	$I_F=0.5\text{A}, I_R=1.0\text{A}, I_{rr}=0.25\text{A}$ (CMMR1F-02, 04)		150	ns
t_{rr}	$I_F=0.5\text{A}, I_R=1.0\text{A}, I_{rr}=0.25\text{A}$ (CMMR1F-06)		250	ns
t_{rr}	$I_F=0.5\text{A}, I_R=1.0\text{A}, I_{rr}=0.25\text{A}$ (CMMR1F-08)		500	ns

CMMR1F-02 CMMR1F-06
 CMMR1F-04 CMMR1F-08



**SURFACE MOUNT
 FAST RECOVERY SILICON RECTIFIER
 1 AMP, 200 THRU 800 VOLTS**

SOD-123F CASE - MECHANICAL OUTLINE



DEVICE	MARKING CODE
CMMR1F-02	CF02F
CMMR1F-04	CF04F
CMMR1F-06	CF06F
CMMR1F-08	CF08F

SYMBOL	INCHES		MILLIMETERS	
	MIN	MAX	MIN	MAX
A	0.035	0.043	0.88	1.08
B	0.020	0.031	0.50	0.80
C	0.004	0.008	0.10	0.20
D	0.065	0.077	1.65	1.95
E	0.104	0.116	2.65	2.95
F	0.140	0.156	3.55	3.95
G	0.030	0.041	0.75	1.05

SOD-123F (REV:R1)

LEAD CODE:
 1) Cathode
 2) Anode

R3 (19-March 2012)