

BAW101

**SURFACE MOUNT  
DUAL, ISOLATED HIGH VOLTAGE  
SILICON SWITCHING DIODES**

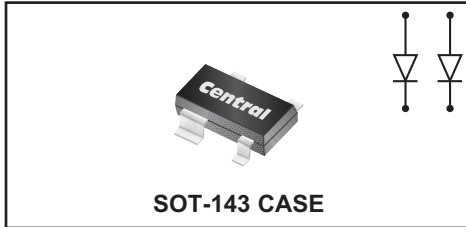


[www.centrasemi.com](http://www.centrasemi.com)

**DESCRIPTION:**

The CENTRAL SEMICONDUCTOR BAW101 consists of two electrically isolated high voltage switching diodes packaged in an epoxy molded SOT-143 surface mount case. This device is designed for applications requiring dual high voltage switching diodes.

**MARKING CODES: CJP or BAW101**



**SOT-143 CASE**

**MAXIMUM RATINGS: (T<sub>A</sub>=25°C)**

Continuous Reverse Voltage  
Peak Repetitive Reverse Voltage  
Continuous Forward Current  
Peak Repetitive Forward Current  
Peak Forward Surge Current, t<sub>p</sub>=1.0μs  
Power Dissipation  
Operating and Storage Junction Temperature  
Thermal Resistance

**SYMBOL**

V<sub>R</sub> 300  
V<sub>RRM</sub> 300  
I<sub>F</sub> 200  
I<sub>FRM</sub> 400  
I<sub>FSM</sub> 4.5  
P<sub>D</sub> 350  
T<sub>J</sub>, T<sub>stg</sub> -65 to +150  
θ<sub>JA</sub> 357

**UNITS**

V  
V  
mA  
mA  
A  
mW  
°C  
°C/W

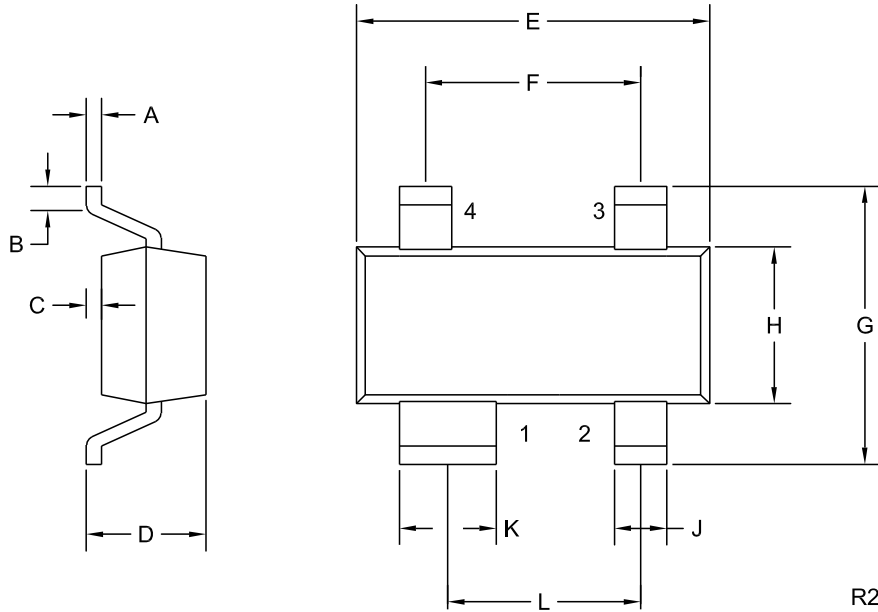
**ELECTRICAL CHARACTERISTICS PER DIODE: (T<sub>A</sub>=25°C unless otherwise noted)**

SYMBOL	TEST CONDITIONS	MIN	TYP	MAX	UNITS
I <sub>R</sub>	V <sub>R</sub> =250V			150	nA
I <sub>R</sub>	V <sub>R</sub> =250V, T <sub>A</sub> =150°C			50	μA
BV <sub>R</sub>	I <sub>R</sub> =100μA	300			V
V <sub>F</sub>	I <sub>F</sub> =100mA		0.9	1.3	V
C <sub>T</sub>	V <sub>R</sub> =0, f=1.0MHz			5.0	pF
t <sub>rr</sub>	I <sub>F</sub> =I <sub>R</sub> =30mA, I <sub>rr</sub> =3.0mA, R <sub>L</sub> =100Ω			50	ns

**BAW101**  
**SURFACE MOUNT**  
**DUAL, ISOLATED HIGH VOLTAGE**  
**SILICON SWITCHING DIODES**

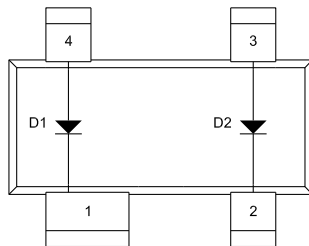


**SOT-143 CASE - MECHANICAL OUTLINE**



R2

**PIN CONFIGURATION**



**LEAD CODE:**

- 1) Cathode D1
- 2) Cathode D2
- 3) Anode D2
- 4) Anode D1

SYMBOL	INCHES		MILLIMETERS	
	MIN	MAX	MIN	MAX
A	0.003	0.006	0.08	0.15
B	0.006	-	0.15	-
C	-	0.005	-	0.13
D	-	0.045	-	1.14
E	0.110	0.120	2.79	3.04
F	0.075		1.90	
G	-	0.098	-	2.50
H	0.047	0.055	1.19	1.40
J	0.014	0.020	0.36	0.50
K	0.030	0.037	0.76	0.93
L	0.067		1.70	

SOT-143 (REV: R2)

**MARKING CODES: CJP or BAW101**

R7 (8-February 2011)