

**CMHSH-3
SURFACE MOUNT
SILICON
SCHOTTKY DIODE**

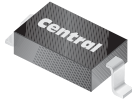


www.centrasemi.com

DESCRIPTION:

The CENTRAL SEMICONDUCTOR CMHSH-3 type is a Silicon Schottky diode, epoxy molded in a SOD-123 surface mount package, designed for fast switching applications requiring a low forward voltage drop.

MARKING CODE: CH3



SOD-123 CASE

MAXIMUM RATINGS: ($T_A=25^\circ\text{C}$)

	SYMBOL		UNITS
Peak Repetitive Reverse Voltage	V_{RRM}	30	V
Continuous Forward Current	I_F	200	mA
Peak Repetitive Forward Current	I_{FRM}	300	mA
Peak Forward Surge Current, $t_p < 1.0\text{s}$	I_{FSM}	600	mA
Power Dissipation	P_D	400	mW
Operating and Storage Junction Temperature	T_J, T_{stg}	-65 to +150	$^\circ\text{C}$
Thermal Resistance	θ_{JA}	312.5	$^\circ\text{C/W}$

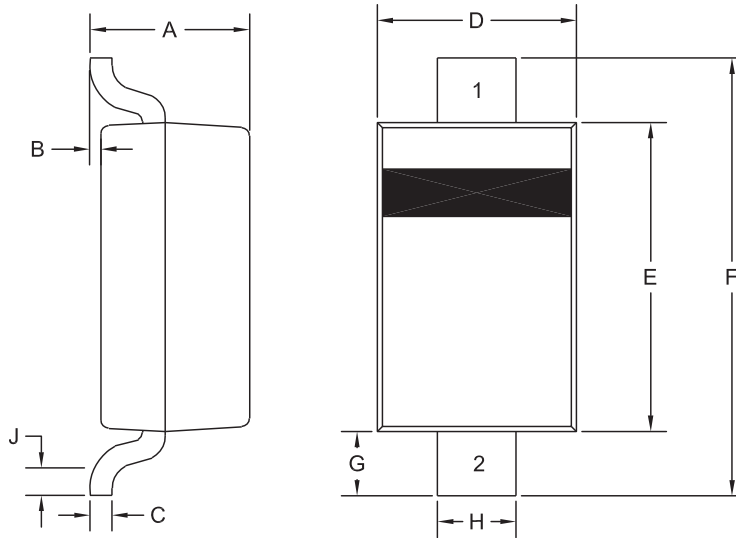
ELECTRICAL CHARACTERISTICS: ($T_A=25^\circ\text{C}$ unless otherwise noted)

SYMBOL	TEST CONDITIONS	MIN	TYP	MAX	UNITS
I_R	$V_R=25\text{V}$			2.0	μA
BV_R	$I_R=100\mu\text{A}$	30			V
V_F	$I_F=100\mu\text{A}$			240	mV
V_F	$I_F=1.0\text{mA}$			320	mV
V_F	$I_F=10\text{mA}$			400	mV
V_F	$I_F=30\text{mA}$			500	mV
V_F	$I_F=100\text{mA}$			1000	mV
C_T	$V_R=1.0\text{V}, f=1.0\text{MHz}$		7.0		pF
t_{rr}	$I_F=I_R=10\text{mA}, R_L=100\Omega, \text{Rec. to } 1.0\text{mA}$		7.0		ns

CMHSH-3
SURFACE MOUNT
SILICON
SCHOTTKY DIODE



SOD-123 CASE - MECHANICAL OUTLINE



R5

LEAD CODE

- 1) Cathode
- 2) Anode

MARKING CODE: CH3

SYMBOL	DIMENSIONS			
	INCHES		MILLIMETERS	
	MIN	MAX	MIN	MAX
A	0.037	0.053	0.95	1.35
B	0.000	0.005	0.00	0.12
C	-	0.008	-	0.20
D	0.055	0.071	1.40	1.80
E	0.098	0.110	2.50	2.80
F	0.142	0.154	3.60	3.90
G	0.016	-	0.40	-
H	0.020	0.028	0.50	0.70
J	0.010	-	0.25	-

SOD-123 (REV:R5)

R6 (5-August 2010)