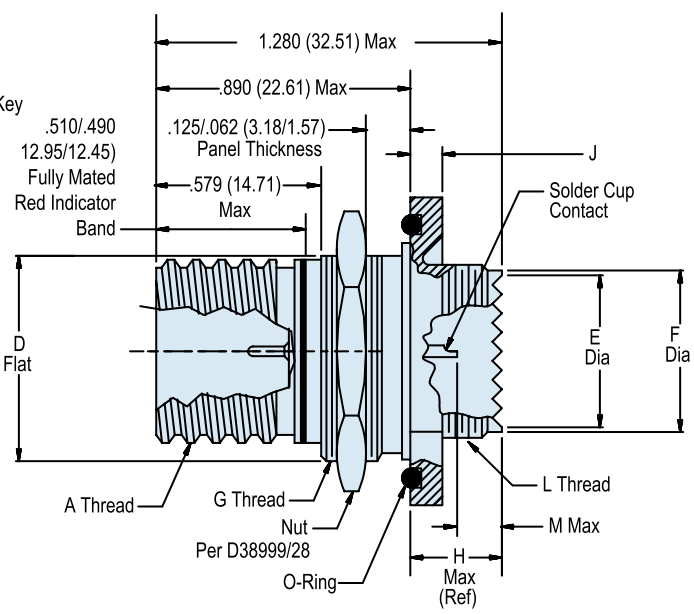
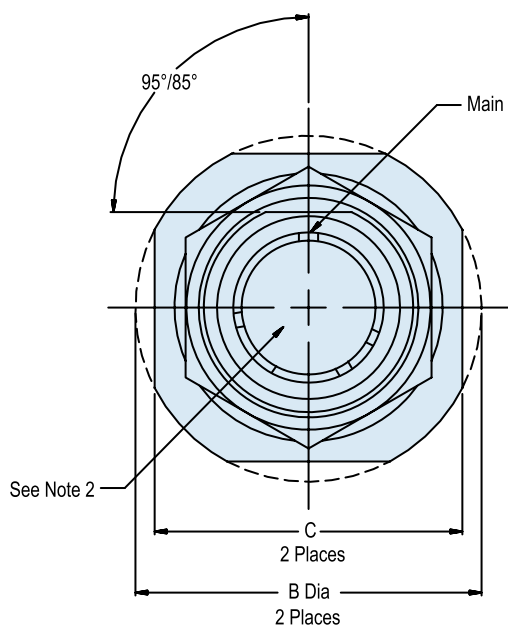
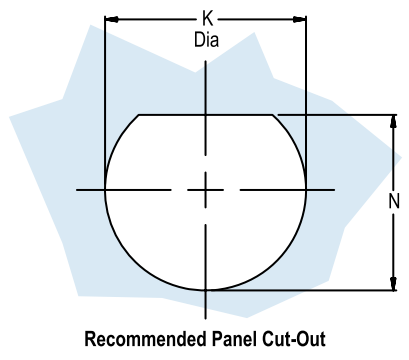
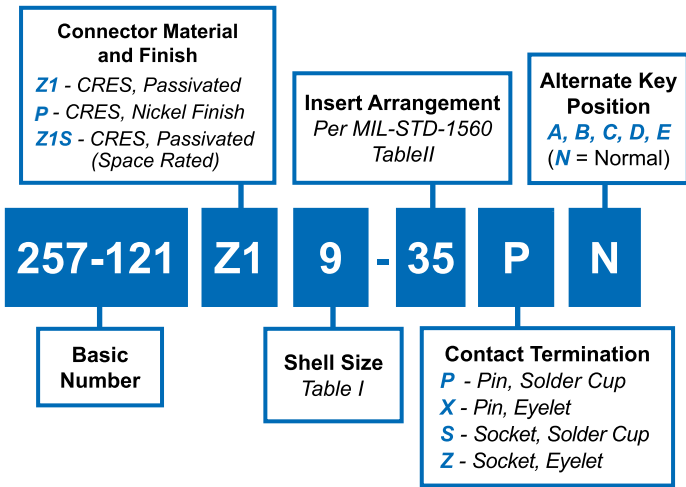




257-121
Special Jam Nut Mount Hermetic Receptacle
MIL-DTL-38999 Series III Type (D38999/23)
with Accessory Threads

B



APPLICATION NOTES

- | | |
|--|---|
| <p>1. Assembly identified with manufacturer's name and PN, space permitting.</p> <p>2. Insert arrangement in accordance with MIL-STD-1560, See Table II.</p> <p>3. Glenair 257-121 receptacle connector is designed to mate with any QPL manufacturer's MIL-DTL-38999 Series III plug connector having the same insert arrangement, polarization, and opposite contact gender.</p> <p>4. Modified major diameter 31.95-31.80 (1.257-1.252)</p> | <p>5. Material/Finish:
Shell, Nut - CRES/nickel per QQ-N-290 or CRES/passivated
Contacts - nickel iron alloy 52/gold
Insulator - fused vitreous glass/N.A.
Hermetic Insulator—fused vitreous glass/N.A.
O-Ring and Seals - fluorosilicone rubber/ N.A.</p> <p>6. Metric dimensions (mm) are indicated in parentheses.</p> |
|--|---|

Dimensions in Inches (millimeters) are subject to change without notice.

257-121

Special Jam Nut Mount Hermetic Receptacle
MIL-DTL-38999 Series III Type (D38999/23)
with Accessory Threads



MIL-DTL-38999 Type
Hermetic Connectors

B

TABLE I: Shell Size, Shell Code, Thread and Dimensions (Continued Below)

Shell Size	Shell Code Ref	A THREAD 0.1 P-0.3L-TS	B Dia	C A/F	D Flat	E Dia Max	F Dia	G THREAD ISO Metric
9	A	0.6250	1.200 (30.48) 1.177 (29.90)	1.078 (27.38) 1.047 (26.59)	.654 (16.61) .645 (16.38)	.346 (8.79)	.416 (10.57) .410 (10.41)	M17 X 1-6G 0.100R
11	B	0.7500	1.385 (35.18) 1.362 (34.59)	1.267 (32.18) 1.236 (31.39)	.754 (19.15) .745 (18.92)	.475 (12.07)	.534 (13.56) .528 (13.41)	M20 X 1-6G 0.100R
13	C	0.8750	1.511 (38.78) 1.488 (37.80)	1.390 (35.31) 1.358 (34.49)	.941 (23.90) .932 (23.67)	.589 (14.96)	.653 (16.59) .647 (16.43)	M25 X 1-6G 0.100R
15	D	1.0000	1.637 (41.58) 1.614 (41.00)	1.515 (38.48) 1.484 (37.69)	1.065 (27.05) 1.056 (26.82)	.714 (18.14)	.810 (20.57) .804 (20.42)	M28 X 1-6G 0.100R
17	E	1.1870	1.763 (44.78) 1.740 (44.20)	1.641 (41.68) 1.610 (40.89)	1.190 (30.23) 1.181 (30.00)	.839 (21.31)	.928 (23.57) .922 (23.42)	M32 X 1-6G 0.100R (See Note 4)
19	F	1.2500	1.949 (49.50) 1.925 (48.90)	1.826 (46.38) 1.795 (45.59)	1.315 (33.40) 1.306 (33.17)	.945 (24.00)	1.046 (26.57) 1.040 (26.42)	M35 X 1-6G 0.100R
21	G	1.3750	2.075 (52.71) 2.051 (52.10)	1.952 (49.59) 1.921 (48.79)	1.440 (36.58) 1.431 (36.35)	1.070 (27.18)	1.164 (29.57) 1.158 (29.41)	M38 X 1-6G 0.100R
23	H	1.5000	2.200 (55.88) 2.177 (55.30)	2.078 (52.78) 2.047 (51.99)	1.565 (39.75) 1.556 (39.52)	1.194 (30.33)	1.282 (32.56) 1.276 (32.41)	M41 X 1-6G 0.100R
25	J	1.6250	2.323 (59.00) 2.299 (58.39)	2.204 (55.98) 2.173 (55.19)	1.690 (42.93) 1.681 (42.70)	1.320 (33.53)	1.400 (35.56) 1.394 (35.41)	M44 X 1-6G 0.100R

TABLE I: Shell Size, Shell Code, Thread and Dimensions (Continued from Above)

Shell Size	Shell Code Ref	H Max	J	K Dia	L THREAD ISO Metric	M Max	N
9	A	.390 (9.91)	.122 (3.10) .083 (2.11)	.710 (18.03) .700 (17.78)	M12 X 1-6G 0.100R	.200 (5.08)	.670 (17.02) .660 (16.76)
11	B	.390 (9.91)	.122 (3.10) .083 (2.11)	.835 (21.21) .825 (20.96)	M15 X 1-6G 0.100R	.200 (5.08)	.771 (19.58) .761 (19.33)
13	C	.390 (9.91)	.122 (3.10) .083 (2.11)	1.020 (25.91) 1.010 (25.65)	M18 X 1-6G 0.100R	.200 (5.08)	.955 (24.26) .945 (24.00)
15	D	.390 (9.91)	.122 (3.10) .083 (2.11)	1.145 (29.08) 1.135 (28.83)	M22 X 1-6G 0.100R	.200 (5.08)	1.085 (27.56) 1.075 (27.31)
17	E	.390 (9.91)	.122 (3.10) .083 (2.11)	1.270 (32.26) 1.260 (32.00)	M25 X 1-6G 0.100R	.200 (5.08)	1.210 (30.73) 1.200 (30.48)
19	F	.390 (9.91)	.153 (3.89) .114 (2.90)	1.395 (35.43) 1.385 (35.18)	M28 X 1-6G 0.100R	.200 (5.08)	1.335 (33.91) 1.325 (33.66)
21	G	.390 (9.91)	.153 (3.89) .114 (2.90)	1.520 (38.61) 1.510 (38.35)	M31 X 1-6G 0.100R	.200 (5.08)	1.460 (37.08) 1.450 (36.83)
23	H	.390 (9.91)	.153 (3.89) .114 (2.90)	1.645 (41.78) 1.635 (41.53)	M34 X 1-6G 0.100R	.200 (5.08)	1.585 (40.26) 1.575 (40.01)
25	J	.390 (9.91)	.153 (3.89) .114 (2.90)	1.770 (44.96) 1.760 (44.70)	M37 X 1-6G 0.100R	.200 (5.08)	1.710 (43.43) 1.700 (43.18)

TABLE II: Layouts and Pin Counts

Pattern	9-98	9-35	11-4	11-5	11-98	11-99	11-35	11-2	13-4	13-8	13-98	13-35	15-5	15-15	15-18	15-19	15-97	15-35	17-6	17-8	17-26	17-99	17-35	19-11	19-28	19-30	19-32	
22D		6					13					22						37					55					
20	3		4	5	6	7				8	10			14	18	19	8					26	21			26	29	32
16								2	4				5	1			4			8					11	2	1	
12																			6									
Pattern	19-35	19-45	21-11	21-16	21-24	21-25	21-27	21-41	21-39	21-35	23-35	23-21	23-32	23-34	23-36	23-53	23-97	23-99	23-55	25-35	25-29	25-61	25-4	25-43	25-19	25-24		
22D	66	67								79	100									128								
20					24	25	27	41	37				32	34	36	53				55		61	48	23				
16				16					2			21											8	20				
12			11																						19	12		

Dimensions in Inches (millimeters) are subject to change without notice.