

PJDL C05C-02TB

VOLTAGE

5.0 Volts

POWER

200 Watts

SOT-523

Unit : inch(mm)

ULTRA LOW CAPACITANCE DUAL TRANSIET VOLTAGE SUPPRESSOR FOR HIGH SPEED DATA LINES

This transient overvoltage suppressor is intended to protect sensitive equipment against electrostatic discharge events as well to offer a minimum insertion loss in data transmission lines in communications ports used in portable consumer, computing and networking applications. This dual transient voltage suppressor comes in a single SOT-523, offering board space reduction, where the application requires it.

This device comes with two pairs of high speed switching diodes connected in series, where both pairs are electrically isolated, offering a very low capacitance, minimizing the insertion losses in data transmission lines.

FEATURES

- Maximum capacitance @ 0 Vdc Bias of 1.0 pF between terminals 1-3 or terminals 2-3
- IEC61000-4-2 esd 15kV Air, 8kV contact compliance
- Lead free in comply with EU RoHS 2002/95/EC directives.
- Green molding compound as per IEC61249 Std. . (Halogen Free)

MECHANICAL DATA

- Case: SOT-523, plastic
- Terminals: solderable per MIL-STD-750, Method 2026
- Approx. Weight: 0.00007ounces, 0.002 grams
- Marking : M7

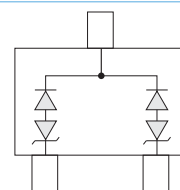
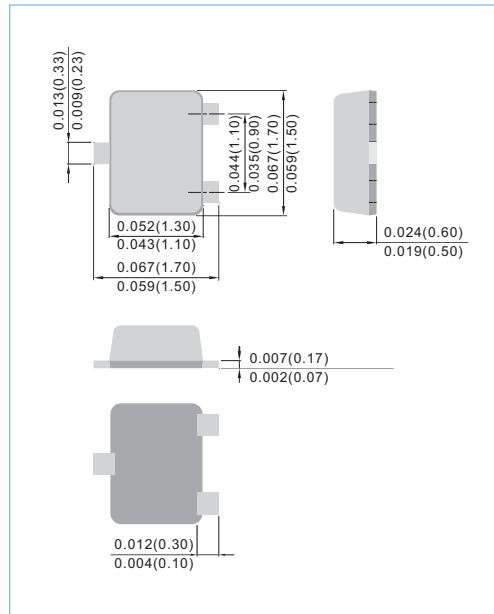


Fig.21

MAXIMUM RATINGS

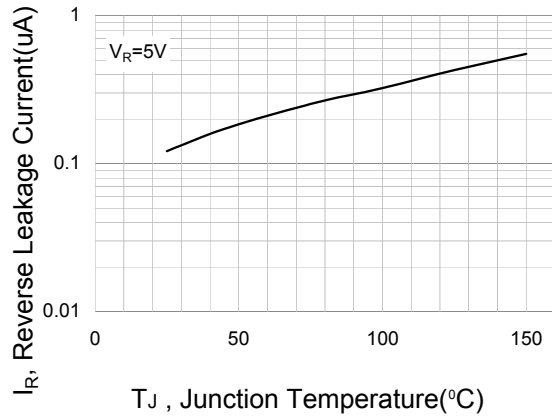
PARAMETER	SYMBOL	VALUE	UNITS
Operating Junction	T _J	-55 to +150	°C
Storage Temperature Range	T _{STG}	-55 to +150	°C

ELECTRICAL CHARACTERISTICS

PARAMETER	SYMBOL	CONDITIONS	Min.	Typ.	Max.	UNITS
Reverse Stand-Off Voltage	V _{RWM}	-	-	-	5	V
Reverse Breakdown Voltage	V _{BR}	I _T =1mA	6	-	-	V
Reverse Leakage Current	I _R	V _{RWM} = 5V, T _J = 25°C	-	-	20	μA
Junction Capacitance	C _J	Between pin1.2 to 3 V _R =0V,f=1MHz	-	-	1.0	pF
Peak Pulse Current	I _{PP}	t _P =8/20 μsec	-	-	10	A
Max .Clamping Voltage	V _C	t _P =8/20 μsec	-	-	20.5	V

PAN JIT RESERVES THE RIGHT TO CHANGE THE SPECIFICATION ANY TIME WITHOUT NOTICE IN ORDER TO IMPROVE THE DESIGN AND SUPPLY THE BEST POSSIBLE PRODUCT.

PJDL C05C-02TB



**Fig.1 TYPICAL LEAKAGE CURRENT
JUNCTION TEMPERATURE**

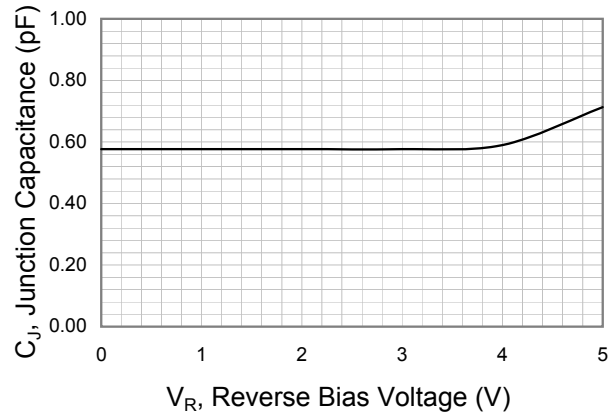


Fig.2 Typical Junction Capacitance

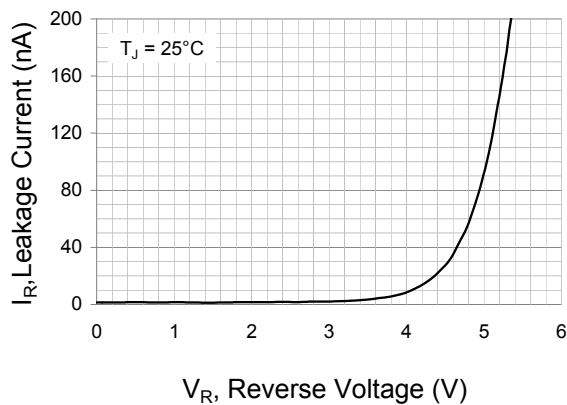


Fig.3 Typical Reverse Characteristics

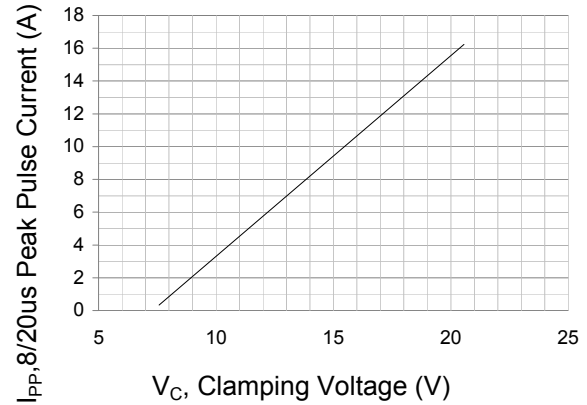
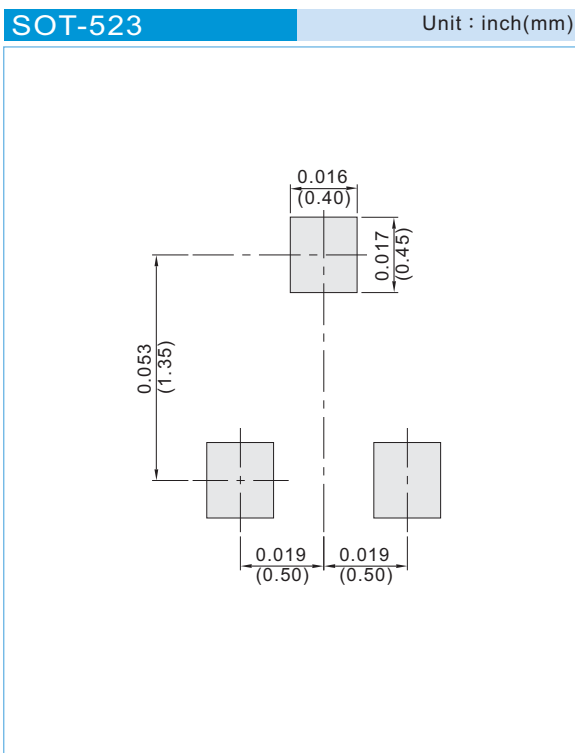


Fig.4 Typical Peak Clamping Voltage

PJDLC05C-02TB

MOUNTING PAD LAYOUT



ORDER INFORMATION

- Packing information

T/R - 4K per 7" plastic Reel

LEGAL STATEMENT

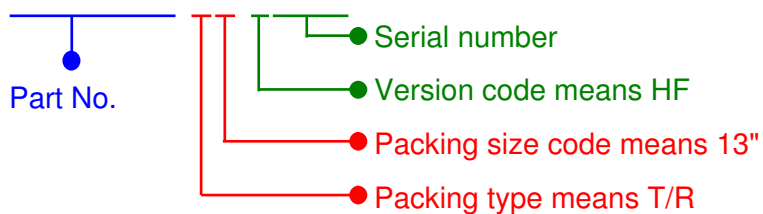
Copyright PanJit International, Inc 2012

The information presented in this document is believed to be accurate and reliable. The specifications and information herein are subject to change without notice. Pan Jit makes no warranty, representation or guarantee regarding the suitability of its products for any particular purpose. Pan Jit products are not authorized for use in life support devices or systems. Pan Jit does not convey any license under its patent rights or rights of others.

PJDLC05C-02TB

For example :

RB500V-40_R2_00001



Part No_packing code_Version

PJDLC05C-02TB_R1_00001

PJDLC05C-02TB_R1_10001

Packing Code XX				Version Code XXXXX		
Packing type	1 st Code	Packing size code	2 nd Code	HF or RoHS	1 st Code	2 nd ~5 th Code
T/B	A	N/A	0	HF	0	serial number
T/R	R	7"	1	RoHS	1	serial number
B/P	B	13"	2			
T/P	T	26mm	X			
TRR	S	52mm	Y			
TRL	L	PBCU	U			
FORMING	F	PBCD	D			