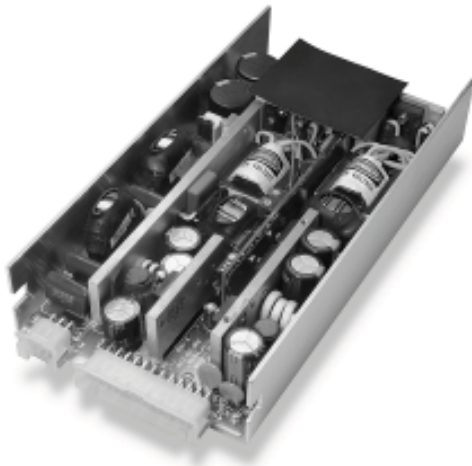




PVD series

230 watts



Features

- *N+1 Redundant*
- *Dual Output*
- *Modified and Custom designs Available*

Ideally Suited For:

- *Tape or Disk Drives*
- *Data Storage Systems*
- *Computer Peripherals*

Input Characteristics

Input Voltage:	36-72 VDC
Input Filtering:	EN55022 Class B
Efficiency:	70% typical

Output Characteristics

Output Voltage Adjustment:	+/-10%
Line Regulation:	+/-0.5% typical
Load Regulation:	1% from 0% to 100% load
Ripple and Noise:	1% pk-pk of Vout
Transient Response (50% load change)	3% maximum deviation, returns to initial condition in 1.0 mSec maximum
Overload Protection:	Constant current limiting at 110% of rated load. Will automatically return to regulation upon removal of overload condition.
Short Circuit Protection:	Will withstand a continuous short without damage. Will automatically return to regulation upon removal of the short
Over Voltage Protection:	115% to 135% of nominal output

Environmental Characteristics

Operating Temperature Range:	0°C to +50°C continuous duty, full rating. Derate linearly to 50% of full rating at +71°C
Storage Temperature Range:	-20°C to +85°C
Temperature Coefficient:	<0.02%/degree C
Humidity:	Up to 95% non-condensing
Reliability (MTBF per Mil-HDBK-217):	>100,000 hours

General Characteristics

Switching Frequency:	65kHz.
Isolation (Input to Output):	2000 VDC
Size:	8.5 x 4.5 x 1.7 inches
Weight:	<3.8 lbs.
Agency Approvals:	UL, CUL, IEC, DEMKO, and CE Mark

Additional Features

Redundant Operation
Hot Swappable

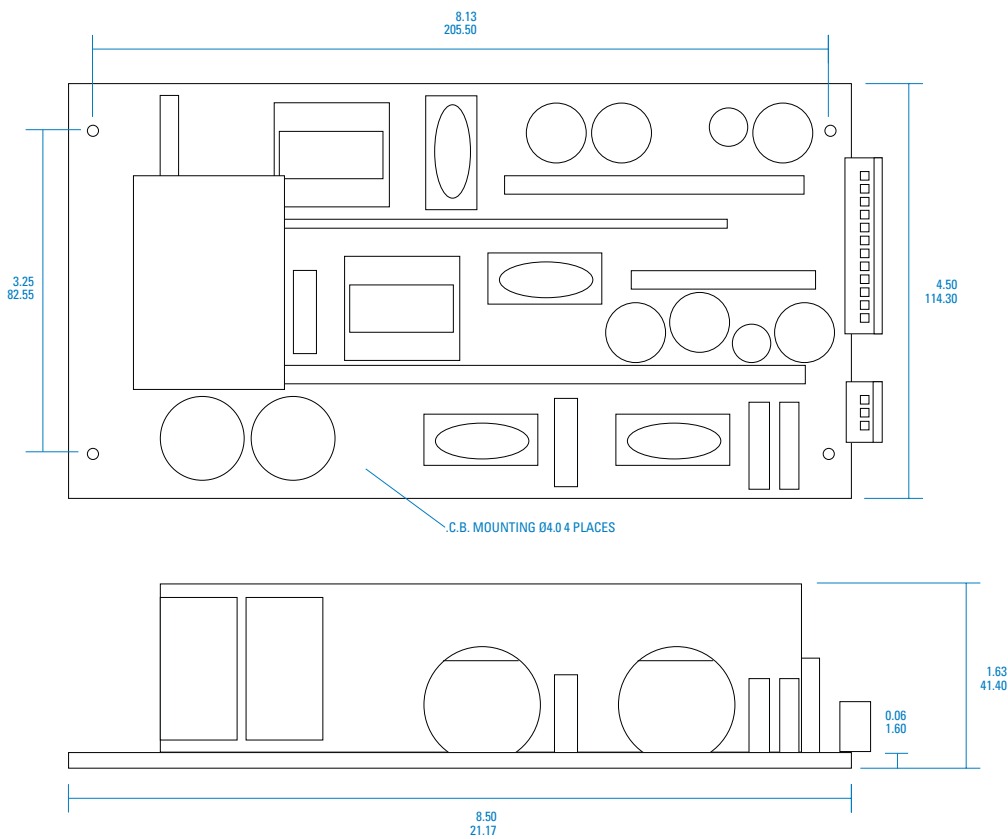




Available Models

Model	Input (VDC)	Output Channel	Output Voltage (VDC)	Output Current (A)
PVD-275-21RS	36-72	V1	+5	23 with 25 peak capability
		V2	+12	9 with 13 peak capability

Outline drawing



All specifications are typical at 25 degrees C with nominal input voltage and full output unless otherwise noted. Specifications are subject to change without notice. All dimensions are typical.